

## Product datasheet for **RC210899**

### Epsin 2 (EPN2) (NM\_148921) Human Tagged ORF Clone

#### Product data:

Product Type:	Expression Plasmids
Product Name:	Epsin 2 (EPN2) (NM_148921) Human Tagged ORF Clone
Tag:	Myc-DDK
Symbol:	Epsin 2
Synonyms:	EHB21
Mammalian Cell Selection:	Neomycin
Vector:	pCMV6-Entry (PS100001)
E. coli Selection:	Kanamycin (25 ug/mL)



[View online »](#)

**ORF Nucleotide Sequence:**

>RC210899 ORF sequence  
 Red=Cloning site Blue=ORF Green=Tags(s)

TTTTGTAATACGACTCACTATAGGGCGGCCGGGAATTCGTCGACTGGATCCGGTACCGAGGAGATCTGCC  
 GCC**GCGATCGCC**

ATGACGACTTCGTCTATCAGACGGCAGATGAAAAACATCGTGAACAATTACTCAGAGGCAGAAATCAAAG  
 TCCGGGAAGCCACCTCCAATGACCCGTGGGCGCGTCCAGTTCTCTGATGACCGAGATTGCCGACCTGAC  
 CTAACAACGTGGTGGCCTTCTCGGAGATCATGAGCATGGTGTGGAAGCGGCTGAATGACCATGGCAAGAAC  
 TGGCGGCATGTGTACAAGGCGCTGACCCTGCTGGACTACCTCATCAAGACAGGCTCCGAACGTGTGGCCC  
 AGCAGTGCCGGGAGAACATCTTCGCCATCCAGACCCTGAAGGACTTCCAGTACATTGACCGAGATGGCAA  
 GGACCAGGGCATCAATGTGCGTGAGAAGTCAAAGCAACTGGTGGCTCTCCTCAAGGACGAGGAACGGTTG  
 AAGGCTGAGAGGGCCAGGCTCTCAAACCAAAGAGCGCATGGCCAGGTTGCCACTGGCATGGGCAGCA  
 ACCAGATCACCTTGGGCGAGGCTCCAGCCAGCCCAACCTCTCCACCAGCCACTCGGAGCAGGAGTATGG  
 CAAGGCCGGGGCTCCCCGGCTCTACCATGGCTCCACCTCCCCGCGAGTGTCTCCGAGCTGGAGCAA  
 GCCCGGCCCCAGACTAGTGGAGAAGAGGAGCTTACAGTGCAGCTGGCACTTGCCATGAGCAGAGAAGTGG  
 CTGAGCAGGAAGAAGCCCTCAGGCGGGGTGATGACCTCAGATTACAGATGGCCCTGGAAGAAGCCGAAG  
 GGACACAGTTAAAATCCAAAAAGAAAGAGCATGGCTCTCTCCACAGCAGACTACGCTGTTGGATTTA  
 ATGGATGCTCTCCCCAGCTCGGGCCCCGCGGCCAGAAAGCAGAGCCCTGGGGCCCGTCAGCCTCCACTA  
 ACCAGACCAACCCTGGGGCGGGCCAGCGGCTCCTGCGAGTACTTCAAGCCCTGGCCATCGTTTGGTAC  
 CAAGCCAGCTGCCTCCATTGACCATGGGGGTGCCACTGGAGCCACCGACAATCTGTCCCAAGAAC  
 TCGGACCCCTGGGAGCTTACAGCAGCCTGCCTCCAGTGTGGGAAAAGAGCTTCTGACGCTGGGGCG  
 CAGTCTCCACCACCAAGCCGTGTCTGTCTGGGTCTTTGAGCTCTTCAAGTAACTGGTACAAT  
 TAAAGATGACTTTTCTGAATTTGACAACCTTCGGACTTCAAAAAAACAGCCGAATCTGTGACCTCTCTG  
 CCATCCAAAAAATGGAATACAGCCCTGACCCCTTTGAGTCTCAACCCTGACTGTGCGCTCAAGCA  
 AGCCAGCAGTGCCCGAAAAACCTGAGTCTTCTGGGCCCAACGCGGCCCTGGTGAACCTGGACTC  
 ACTGGTGACCAGGCTGCCCCACAGCCAGTCCCTCAACCCTTTCTGGCACCAGGTGCTCCCGCCACC  
 TCGGCCCTGTTAACCTTTCCAGGTGAACCAGCCCGAGCGCTGACACTGAACCAGTTCGGGGGAGCC  
 CAGTCTGGGGACCAGCACATCCTTTGGCCTGGCCAGGAGTGGAGTCCATGGCTGTGGCTCGATGAC  
 CTCCGCGGCCCCACAGCCAGCTCTGGGGCCACTGGTTCTCTGACACCAGTGGCCCTGCAATGATG  
 AACATGGTGGCAGTGTGGGTATACCCCATCAGCAGCCAGGCCACTGGCACAACCAACCTTTCTCTC  
 TC

AG**GCGACCG**ACGCGTACGCGGCCGCTCGAGCAGAAACTCATCTCAGAAGAGGATCTGGCAGCAAATGATATCC  
 TGGATTACAAGGATGACGACGATAAGGTTTAA

**Protein Sequence:**

>RC210899 protein sequence  
 Red=Cloning site Green=Tags(s)

MTTSSIRQMKNIVNNYSEAEIKVREATSNDPWGPSSSLMTEIADLTYNVVFSEIMSMVWKRNDHGKN  
 WRHVYKALTLLDYLIKTGSERVAQQCRENIFAIQTLKDFQYIDRDGKDQGINVREKSKQLVALLKDEERL  
 KAERAQALKTKERMAQVATGMGSNQITFGRGSSQPNLSTSHSEQEYKAGGSPASYHGSTSPRVSSLEQ  
 ARPQTSGEELQLQLALAMSREVAEQEERLRGDDLRLQMALEESRRDVKIPKKKEHGSLLPQQTLLDL  
 MDALPSSGPAQAEPWGPSASTNQTNPWGPAAPASTSDPWPSFGTKPAASIDPWGVPATGATAQSVKPN  
 SDPWAASQPPASSAGKRASDAWGAVSTTKPVSVSGSFELFNLNGTIKDDFSEFDNLRTSKKTAESVTS  
 PSQNNGTTSPDPFESQPLTVASSKPSSARKTPESFLGPNAALVNLDLSLVTRPAPPAQSLNPFLAPGAPAT  
 SAPVNPFPVNPQPLTLNQLRGSPLVLTSTSFPGPGVESMAVASMTSAAQPALGATGSSSLTPLGPAMM  
 NMVGSVGIPPSAAQATGTTNPFL

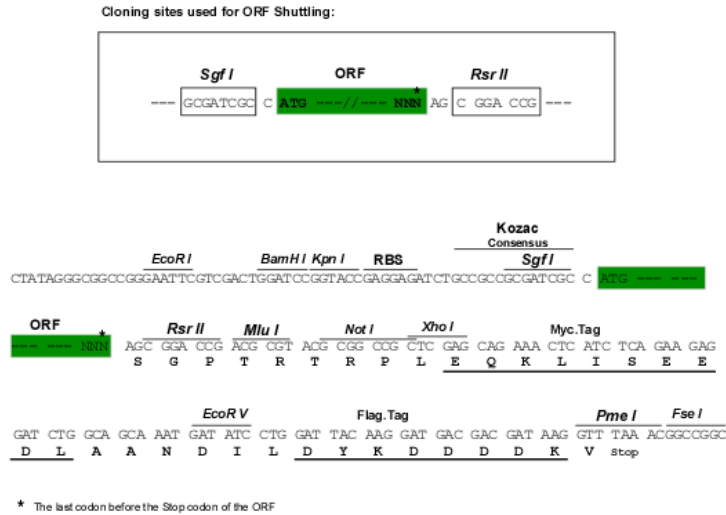
SGP**TRTRPLEQKLI**SEEDLAANDILDYKDDDDKV

**Chromatograms:**

[https://cdn.origene.com/chromatograms/mk6621\\_b12.zip](https://cdn.origene.com/chromatograms/mk6621_b12.zip)

Restriction Sites: SgfI-RsrII

Cloning Scheme:



ACCN: NM\_148921

ORF Size: 1752 bp

OTI Disclaimer: The molecular sequence of this clone aligns with the gene accession number as a point of reference only. However, individual transcript sequences of the same gene can differ through naturally occurring variations (e.g. polymorphisms), each with its own valid existence. This clone is substantially in agreement with the reference, but a complete review of all prevailing variants is recommended prior to use. [More info](#)

OTI Annotation: This clone was engineered to express the complete ORF with an expression tag. Expression varies depending on the nature of the gene.

Components: The ORF clone is ion-exchange column purified and shipped in a 2D barcoded Matrix tube containing 10ug of transfection-ready, dried plasmid DNA (reconstitute with 100 ul of water).

Reconstitution Method:

1. Centrifuge at 5,000xg for 5min.
2. Carefully open the tube and add 100ul of sterile water to dissolve the DNA.
3. Close the tube and incubate for 10 minutes at room temperature.
4. Briefly vortex the tube and then do a quick spin (less than 5000xg) to concentrate the liquid at the bottom.
5. Store the suspended plasmid at -20°C. The DNA is stable for at least one year from date of shipping when stored at -20°C.

RefSeq: [NM\\_148921.2](#), [NP\\_683723.1](#)

RefSeq Size: 4664 bp

RefSeq ORF: 1755 bp

Locus ID: 22905

UniProt ID: [O95208](#)

Cytogenetics: 17p11.2

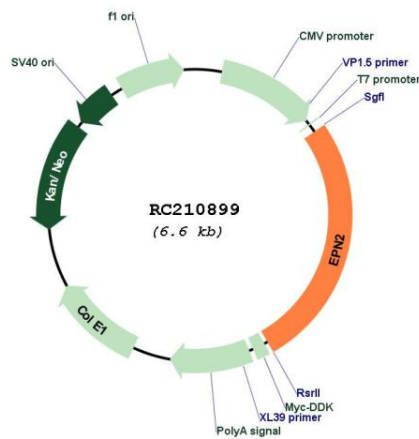
Domains: ENTH, UIM

Protein Pathways: Endocytosis

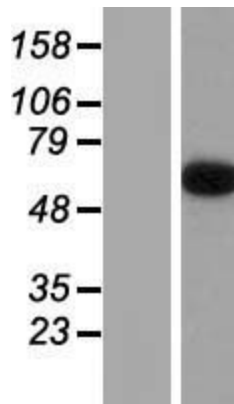
MW: 62.3 kDa

**Gene Summary:** This gene encodes a protein which interacts with clathrin and adaptor-related protein complex 2, alpha 1 subunit. The protein is found in a brain-derived clathrin-coated vesicle fraction and localizes to the peri-Golgi region and the cell periphery. The protein is thought to be involved in clathrin-mediated endocytosis. Alternate splicing of this gene results in multiple transcript variants encoding different isoforms. [provided by RefSeq, Jul 2008]

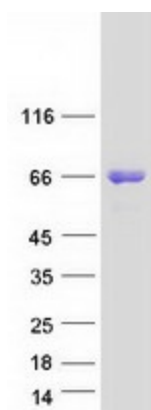
### Product images:



Circular map for RC210899



Western blot validation of overexpression lysate (Cat# [LY407732]) using anti-DDK antibody (Cat# [TA50011-100]). Left: Cell lysates from untransfected HEK293T cells; Right: Cell lysates from HEK293T cells transfected with RC210899 using transfection reagent MegaTran 2.0 (Cat# [TT210002]).



Coomassie blue staining of purified EPN2 protein (Cat# [TP310899]). The protein was produced from HEK293T cells transfected with EPN2 cDNA clone (Cat# RC210899) using MegaTran 2.0 (Cat# [TT210002]).