

Product datasheet for RC210898

SFRS9 (SRSF9) (NM_003769) Human Tagged ORF Clone

Product data:

Product Type:	Expression Plasmids
Product Name:	SFRS9 (SRSF9) (NM_003769) Human Tagged ORF Clone
Tag:	Myc-DDK
Symbol:	SFRS9
Synonyms:	SFRS9; SRp30c
Mammalian Cell Selection:	Neomycin
Vector:	pCMV6-Entry (PS100001)
E. coli Selection:	Kanamycin (25 ug/mL)
ORF Nucleotide Sequence:	>RC210898 ORF sequence Red=Cloning site Blue=ORF Green=Tags(s)

TTTTGTAATACGACTCACTATAGGGCGGCCGGAATTCGTCGACTGGATCCGGTACCGAGGAGATCTGCC
GCC**CGATCGCC**

ATGTCGGGCTGGGCGGACGAGCGCGCGGGCGAGGGCGACGGGCGCATCTACGTGGGGAACCTTCGACCG
ACGTGCGCGAGAAGGACTTGGAGGACCTGTTCTACAAGTACGGCCGCATCCGCGAGATCGAGCTCAAGAA
CCGGCACGGCCTCGTGCCCTTCGCCTTCGTGCGCTTCGAGGACCCCGAGATGCAGAGGATGCTATTTAT
GGAAGAAATGGTTATGATTATGGCCAGTGTGGCTTCGTGTGGAGTTCCCAGGACTTATGGAGGTCGGG
GTGGGTGGCCCCGTGGTGGGAGGAATGGGCCTCCTACAAGAAGATCTGATTTCCGAGTTCCTGTTTCAGG
ACTTCTCCGTCAGGCAGCTGGCAGGACCTGAAGGATCACATGCGAGAAGCTGGGATGTCTGTTATGCT
GATGTGCAGAAGGATGGAGTGGGGATGGTTCGAGTATCTCAGAAAAGAAGACATGGAATATGCCCTGCGTA
AACTGGATGACACCAAATTCGCTCTCATGAGGGTGAACTTCCTACATCCGAGTTTATCCTGAGAGAAG
CACCAGCTATGGCTACTCACGGTCTCGGTCTGGGTCAAGGGCCGTGACTCTCCATACCAAAGCAGGGGT
TCCCCACACTACTTCTCCTTTTCAGGCCCTAC

ACGCGTACGCGGCGCTCGAGCAGAACTCATCTCAGAAGAGGATCTGGCAGCAATGATATCCTGGATT
ACAAGGATGACGACGATAAGGTTTAA



[View online »](#)

Protein Sequence: >RC210898 protein sequence
 Red=Cloning site Green=Tags(s)

MSGWADERGGEGDGRIVYGNLPTDVREKLEDLFYKYGRIREIELKNRHGLVPPAFVRFEDPRDAEDIAIY
 GRNGYDYGQCRLRVEFPRTYGGRRGWPRGGRNGPPTRRSDFRVLVSGLPSSGSWQDLKDHMREAGDVCYA
 DVQKDGVMVEYLKEDMEYALRKLDDTKFRSHEGETSYIRVYPERSTSYGYSRSRSGSRGRDSPYQSRG
 SPHYFSPFRPY

TRTRPLEQKLISEEDLAANDILDYKDDDDKV

Chromatograms: https://cdn.origene.com/chromatograms/mk6382_c05.zip

Restriction Sites: SgfI-MluI

Cloning Scheme:

Cloning sites used for ORF Shuttling:



* The last codon before the Stop codon of the ORF

ACCN: NM_003769

ORF Size: 663 bp

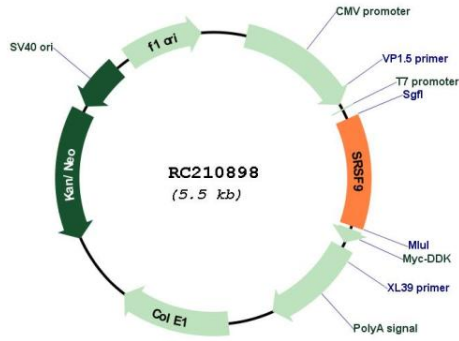
OTI Disclaimer: Due to the inherent nature of this plasmid, standard methods to replicate additional amounts of DNA in E. coli are highly likely to result in mutations and/or rearrangements. Therefore, OriGene does not guarantee the capability to replicate this plasmid DNA. Additional amounts of DNA can be purchased from OriGene with batch-specific, full-sequence verification at a reduced cost. Please contact our customer care team at custsupport@origene.com or by calling 301.340.3188 option 3 for pricing and delivery.

The molecular sequence of this clone aligns with the gene accession number as a point of reference only. However, individual transcript sequences of the same gene can differ through naturally occurring variations (e.g. polymorphisms), each with its own valid existence. This clone is substantially in agreement with the reference, but a complete review of all prevailing variants is recommended prior to use. [More info](#)

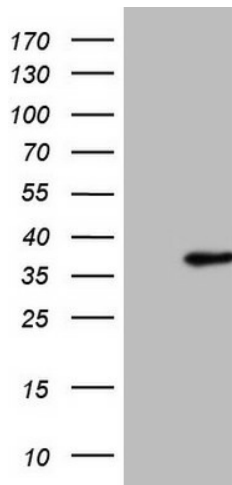
OTI Annotation: This clone was engineered to express the complete ORF with an expression tag. Expression varies depending on the nature of the gene.

Components:	The ORF clone is ion-exchange column purified and shipped in a 2D barcoded Matrix tube containing 10ug of transfection-ready, dried plasmid DNA (reconstitute with 100 ul of water).
Reconstitution Method:	<ol style="list-style-type: none">1. Centrifuge at 5,000xg for 5min.2. Carefully open the tube and add 100ul of sterile water to dissolve the DNA.3. Close the tube and incubate for 10 minutes at room temperature.4. Briefly vortex the tube and then do a quick spin (less than 5000xg) to concentrate the liquid at the bottom.5. Store the suspended plasmid at -20°C. The DNA is stable for at least one year from date of shipping when stored at -20°C.
Note:	Plasmids are not sterile. For experiments where strict sterility is required, filtration with 0.22um filter is required.
RefSeq:	NM_003769.3
RefSeq Size:	1204 bp
RefSeq ORF:	666 bp
Locus ID:	8683
UniProt ID:	Q13242
Cytogenetics:	12q24.31
Domains:	RRM
Protein Families:	Druggable Genome
Protein Pathways:	Spliceosome
MW:	25.5 kDa
Gene Summary:	The protein encoded by this gene is a member of the serine/arginine (SR)-rich family of pre-mRNA splicing factors, which constitute part of the spliceosome. Each of these factors contains an RNA recognition motif (RRM) for binding RNA and an RS domain for binding other proteins. The RS domain is rich in serine and arginine residues and facilitates interaction between different SR splicing factors. In addition to being critical for mRNA splicing, the SR proteins have also been shown to be involved in mRNA export from the nucleus and in translation. Two pseudogenes, one on chromosome 15 and the other on chromosome 21, have been found for this gene. [provided by RefSeq, Sep 2010]

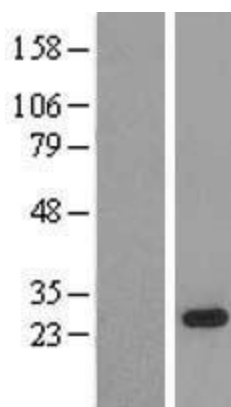
Product images:



Circular map for RC210898



HEK293T cells were transfected with the pCMV6-ENTRY control (Cat# [PS100001], Left lane) or pCMV6-ENTRY SRSF9 (Cat# RC210898, Right lane) cDNA for 48 hrs and lysed. Equivalent amounts of cell lysates (5 ug per lane) were separated by SDS-PAGE and immunoblotted with anti-SRSF9 (Cat# [TA808424])(1:2000). Positive lysates [LY418444] (100ug) and [LC418444] (20ug) can be purchased separately from OriGene.



Western blot validation of overexpression lysate (Cat# [LY418444]) using anti-DDK antibody (Cat# [TA50011-100]). Left: Cell lysates from untransfected HEK293T cells; Right: Cell lysates from HEK293T cells transfected with RC210898 using transfection reagent MegaTran 2.0 (Cat# [TT210002]).