

## Product datasheet for RC210897

### Macrophage Inflammatory Protein 3 (CCL23) (NM\_145898) Human Tagged ORF Clone

#### Product data:

**Product Type:** Expression Plasmids  
**Product Name:** Macrophage Inflammatory Protein 3 (CCL23) (NM\_145898) Human Tagged ORF Clone  
**Tag:** Myc-DDK  
**Symbol:** Macrophage Inflammatory Protein 3  
**Synonyms:** CK-BETA-8; Ckb-8; Ckb-8-1; CKb8; hmrp-2a; MIP-3; MIP3; MPIF-1; SCYA23  
**Mammalian Cell Selection:** Neomycin  
**Vector:** pCMV6-Entry (PS100001)  
**E. coli Selection:** Kanamycin (25 ug/mL)  
**ORF Nucleotide Sequence:** >RC210897 ORF sequence  
Red=Cloning site Blue=ORF Green=Tags(s)

TTTTGTAATACGACTCACTATAGGGCGCCGGAATTCGTCGACTGGATCCGGTACCGAGGAGATCTGCC  
GCC**CGATCGCC**

ATGAAGGTCTCCGTGGCTGCCCTCTCCTGCCTCATGCTTGTACTGCCCTTGGATCCCAGGCCCGGGTCA  
CAAAGATGCAGAGACAGAGTTCATGATGTCAAAGCTTCCATTGGAAAATCCAGTACTTCTGGACAGATT  
CCATGCTACTAGTGTGACTGCTGCATCTCTACACCCACGAAGCATCCCGTGTCTACTCTGGAGAGT  
TACTTTGAAACGAACAGCGAGTGTCCAAGCCGGGTGCATCTTCTCACCAGAAGGGGCGACGTTTCT  
GTGCCAACCCAGTGATAAGCAAGTTCAGGTTTGCATGAGAATGCTGAAGCTGGACACACGGATCAAGAC  
CAGGAAGAAT

**ACGCGT**ACGCGGCCGCTCGAGCAGAACTCATCTCAGAAGAGGATCTGGCAGCAAATGATATCCTGGATT  
ACAAGGATGACGACGATAAGGTTTAA

**Protein Sequence:** >RC210897 protein sequence  
Red=Cloning site Green=Tags(s)  
MKVSVAAALSCLMLVTALGSQARVTKDAETEFMMSKLPLENPVLLDRFHATSADCCISYTPRSIPCSLLES  
YFETNSECSKPGVIFLTKKGRRFCANPSDKQVQVCMRMLKLDTRIKTRKN

**TR**TRPLEQKLISEEDLAANDILDYKDDDDKV

**Chromatograms:** [https://cdn.origene.com/chromatograms/mk6382\\_e03.zip](https://cdn.origene.com/chromatograms/mk6382_e03.zip)

**Restriction Sites:** SgfI-MluI



[View online »](#)

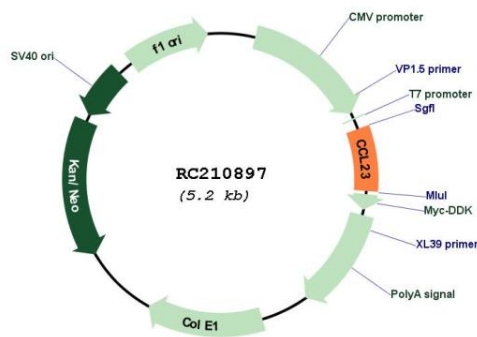


**Cytogenetics:** 17q12  
**Protein Families:** Druggable Genome, Secreted Protein  
**Protein Pathways:** Chemokine signaling pathway, Cytokine-cytokine receptor interaction

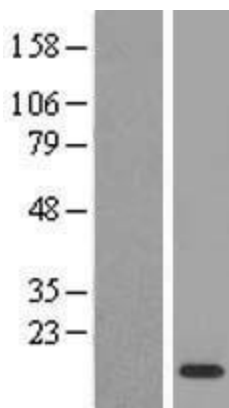
**MW:** 13.4 kDa

**Gene Summary:** This gene is one of several chemokine genes clustered on the q-arm of chromosome 17. Chemokines form a superfamily of secreted proteins involved in immunoregulatory and inflammatory processes. The superfamily is divided into four subfamilies based on the arrangement of the N-terminal cysteine residues of the mature peptide. This chemokine, a member of the CC subfamily, displays chemotactic activity on resting T lymphocytes and monocytes, lower activity on neutrophils and no activity on activated T lymphocytes. The protein is also a strong suppressor of colony formation by a multipotential hematopoietic progenitor cell line. In addition, the product of this gene is a potent agonist of the chemokine (C-C motif) receptor 1. Alternative splicing results in multiple transcript variants that encode different isoforms. [provided by RefSeq, Jul 2013]

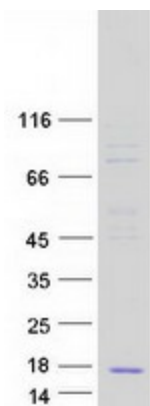
**Product images:**



Circular map for RC210897



Western blot validation of overexpression lysate (Cat# [LY407835]) using anti-DDK antibody (Cat# [TA50011-100]). Left: Cell lysates from untransfected HEK293T cells; Right: Cell lysates from HEK293T cells transfected with RC210897 using transfection reagent MegaTran 2.0 (Cat# [TT210002]).



Coomassie blue staining of purified CCL23 protein (Cat# [TP310897]). The protein was produced from HEK293T cells transfected with CCL23 cDNA clone (Cat# RC210897) using MegaTran 2.0 (Cat# [TT210002]).