

## Product datasheet for **RC210896**

### **ABTB2 (NM\_145804) Human Tagged ORF Clone**

#### **Product data:**

Product Type:	Expression Plasmids
Product Name:	ABTB2 (NM_145804) Human Tagged ORF Clone
Tag:	Myc-DDK
Symbol:	ABTB2
Synonyms:	ABTB2A; BTBD22
Mammalian Cell Selection:	Neomycin
Vector:	pCMV6-Entry (PS100001)
E. coli Selection:	Kanamycin (25 ug/mL)



[View online »](#)

**ORF Nucleotide  
Sequence:**

>RC210896 ORF sequence  
 Red=Cloning site Blue=ORF Green=Tags(s)

TTTTGTAATACGACTCACTATAGGGCGGCCGGAATTCGTCGACTGGATCCGGTACCGAGGAGATCTGCC  
 GCC**CGATCGCC**

ATGAGCGCCGGCAGCGGGCTGCGCCGGGGCAAGTCCGCGCGCTGCGGCCCTCACCTTCTCAGTGGGTGCT  
 TTTTCCGCTGGATGGTGGACACCCGAATCTCCGTGCGCATCCACGAGTACGCAGCCATCTCCCTCACCGC  
 CTGCATGGAGAACCTGGTGGAGGAGATCCGGGCCAGGGTATGGCCAGCCACAGCCCTGATGGCGGAGGG  
 GCCGGAGCGGGGAGGTGTCTGCTGAGGCCCTGGAGATGGTCATCAACAACGACGCCGAGCTCTGGGGCG  
 TCTTGCAGCCCTATGAGCATCTCATCTGCGGCAAGAACGCCAATGGTGTCTCTCCCTCCCCGATACTT  
 CAGCCCCATAACGGCGGGTCCCTGGGCCATGACGAGCGAGCCGATGCCTATGCCAGCTGGAGCTCCGA  
 ACCCTGGAGCAGTCCCTCTGGCCACCTGCGTGGGCAGCATCTCGGAGCTGAGTGACTTGGTCTCCCGTG  
 CCATGCACCACATGCAGGGGCGTACCCCTGTGCCGGGTGCCAGCCCTGCCCGCCAGGCCCGCCAGCC  
 GCCACAGCCCATCACTTGGTCCCGGACGCCCTCCACACGCTCTACTACTTTCTGCGGTGTCCACAGATG  
 GAGTCCATGGAGAACCCCAACCTGGACCCCGGAGAATGACCTTGAACAATGAACGGCCCTTCATGCTGC  
 TGCCGCCCTCATGGAGTGGATGCGCGTGGCCATCACCTACGCAGAGCACCGCCGAGCCTCACCGTGGGA  
 CAGCGGGACATCCGGCAGGCAGCCCGGCTGCTGCTGCCTGGTCTGGACTGTGAACCTCGGCAGCTCAAA  
 CCCGAACACTGTTTCAGTTCTTCCGGAGGCTGGATGCCCGAGCAGCTACTGAAAAATCAACCAGGACC  
 TGGGTTTCCGCATGCTCAACTGTGGGAGGACGGACCTCATCAACCAAGCCATCGAGGCCCTGGGTCCGGA  
 TGGGGTTAACACCATGGATGACCAGGGTATGACGCCACTGATGTACGCTGCGTCTGGGGACGAAGCG  
 ATGGTCCAGATGTTGATTGATGCTGGGGCAAATGGACATCCAGGTTCCAAGCAACTCCCCAGGCACC  
 CTTCCATCCACCCCGACAGCCGCACTGGACCTCACTGACATTCGCTGTGCTGCATGGACACATCTGT  
 GGTCCAGTTGCTGCTGGATGCTGGTGCCATGTGAGGGCTCGGCAGTGAACGGCGGCGAGGACAGCTAT  
 GCGGAGACGCCCTGCAGCTGGCCTCTGCGGCAGGGAATATGAGCTGGTCAAGTTTGTGCTGAGCCGAG  
 GCGCCGACCCCTCCTCAGCATGCTGGAGGCCACGGCATGGGCTCCTCCCTCCACGAGGACATGAACTG  
 CTTCAGCCACTCAGTGCCACGGCCACAGGAACGTCCTGAGGAAGCTCCTGACGCAGCCACAGCAGGCT  
 AAAGCGGACGTGCTGTCCCTGGAGGAGATCCTGGCCGAGGGTGTGGAGGAAAGTATGCGTGCAGCCAGG  
 GCAGTGGCAGCGAGGGGCCGTCGCGCTGAGCCGACCCGACCAAGGCCCTACAGGAGGCCATGTACTA  
 CAGCGCTGAGCACGGCTACGTGGACATCACCATGGAGCTGAGGGCACTGGGAGTCCCTGGAAGCTGCAC  
 ATCTGGATCGAGTCTCTGAGGACCTCGTTCTCGCAGTCCGCGTACTCGGTGGTGCAGAGCCTCCTGCGGG  
 ACTTCAGTCCATCAGAGAGGAGGAGTACAACGAGGAGCTGGTGACCGAGGGCTTGACGCTCATGTTTCA  
 CATCCTCAAGACCAGAAAAACGACTCCGTATCCAGCAACTGGTACCATCTTCAACCCTGCTATGGC  
 AGCAGTCCCATCCCAGCATCCCAGAGATCCGGAAGACCTGCCGGCCAGGCTAGATCCACACTTTTTGA  
 ACAATAAGGAGATGTCAGATGTGACCTTCTGGTGAAGGAAAGCTGTTTTATGCACATAAAGTCTGCT  
 GGTGACAGCTTCAACAGGTTCAAGACACTAATGACCAATAAATCAGAACAGGATGGGGACAGCAGCAAG  
 ACCATCGAGATCAGCGACATGAAGTACCACATTTTTCAGATGATGATGCAGTATCTGACTACGGAGGAA  
 CAGAATCCATGGAGATCCCCACCACTGACATCCTGGAGCTGCTGTGAGTGCAGCCTGTTCCAGCTGGA  
 TGCCCTGCAGAGGCACTGCGAGATCCTGTGCTCCAGACCTCAGCATGGAGAGTGGCGTGAACACCTAC  
 AAATATGCCAAGATCCACAATGCCCCAGAACTGGCCCTGTTCTGTGAGGGCTTCTTCCCTCAAGCACATGA  
 AGGCCCTACTGGAGCAGGATGCCTTCCGCGAGCTCATCTACGGCCGACGAGCAAGTGCAGGGCCTGGA  
 TCCACTGCAGGACCTGCAGAACCCTGGCAGAGCGCTGCACTCTGTCTACATCACCTCCCGGGTG

**ACGCGT**ACGCGGCCGCTCGAGCAGAACTCATCTCAGAAGAGGATCTGGCAGCAATGATATCCTGGATT  
 ACAAGGATGACGACGATAAGGTTTAA

**Protein Sequence:** >RC210896 protein sequence  
Red=Cloning site Green=Tags(s)

MSAGDGLRRGKSARCGLTFSVGRFFRWMVDTRISVRIHEYAAISLTACMENLVEEIRARVMASHSPDGGG  
AGGGEVSAEALVMINNDALWGLQPYEHLICGKNANGVLSLPAYFSPYNGGSLGHERADAYAQLELR  
TLEQSLLATCVGSISELSDLVSRAMHHMQGRHPLCPGASPARQARQPPQPI TWSPDALHTLYYFLRCPQM  
ESMENPNLDPPRMTLNNERPFMLLPPLMEWMRVAITYAEHRRSLTVDSGDIRQAARLLLPLGDCEPRQK  
PEHCFSSFRRLDARAATEKFNQDLGFRMLNCGRTDLINQAIEALGPDGVNTMDDQGMTPLMYACAAGDEA  
MVQMLIDAGANLDIQVPSNSPRHPSIHPDSRHWTSLTF AVLHGHISVVQLLL DAGAHVEGSAVNGGEDSY  
AETPLQLASAAGNYELVLLLLSRGADPLL SMLEAHGMGSSLHEDMNCFSHSAAHGHRNVLKLLTQPQQA  
KADVLSLEEILAEVVEESDASSQSGSEGPVRLSRTRTKALQEAMYYSAEHGYVDITMELRALGVPWKLH  
IWIESLRTSFSQSRYSVVQSLLRDFSSIREEEYNEELVTEGLQLMFDILKTSKNDSVIQQLATIFTHCYG  
SSPIPSIPEIRKTLPARLDPHFLNNKEMSDVTF LVEGKLFYAHKVLLVTASNRFKTLMTNKSEQDGDSSK  
TIEISDMKYHIFQMMQYLYYGGTESMEIPTTDILELLSAASLFQLDALQRHCEILCSQTL SMESAVNTY  
KYAKIHNAPELALFCEGFFLKHMKALLEQDAFRQLIYGRSSKVQGLDPLQDLQNTLAERVHVSYYITSRV

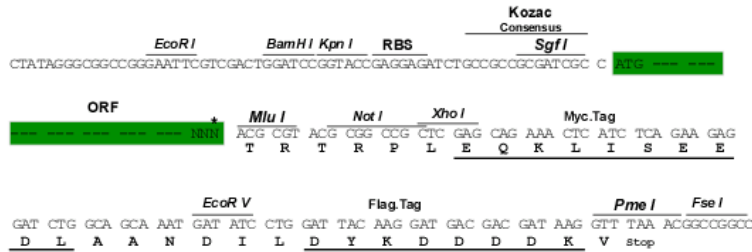
TRTRPLEQKLISEEDLAANDILDYKDDDDKV

**Chromatograms:** [https://cdn.origene.com/chromatograms/mk6592\\_e03.zip](https://cdn.origene.com/chromatograms/mk6592_e03.zip)

**Restriction Sites:** Sgfl-Mlul

**Cloning Scheme:**

Cloning sites used for ORF Shuttling:



\* The last codon before the Stop codon of the ORF

**ACCN:** NM\_145804

**ORF Size:** 2517 bp

**OTI Disclaimer:** The molecular sequence of this clone aligns with the gene accession number as a point of reference only. However, individual transcript sequences of the same gene can differ through naturally occurring variations (e.g. polymorphisms), each with its own valid existence. This clone is substantially in agreement with the reference, but a complete review of all prevailing variants is recommended prior to use. [More info](#)

**OTI Annotation:** This clone was engineered to express the complete ORF with an expression tag. Expression varies depending on the nature of the gene.

**Components:** The ORF clone is ion-exchange column purified and shipped in a 2D barcoded Matrix tube containing 10ug of transfection-ready, dried plasmid DNA (reconstitute with 100 ul of water).

**Reconstitution Method:**

1. Centrifuge at 5,000xg for 5min.
2. Carefully open the tube and add 100ul of sterile water to dissolve the DNA.
3. Close the tube and incubate for 10 minutes at room temperature.
4. Briefly vortex the tube and then do a quick spin (less than 5000xg) to concentrate the liquid at the bottom.
5. Store the suspended plasmid at -20°C. The DNA is stable for at least one year from date of shipping when stored at -20°C.

**RefSeq:** [NM\\_145804.1](#), [NP\\_665803.1](#)

**RefSeq Size:** 4919 bp

**RefSeq ORF:** 3078 bp

**Locus ID:** 25841

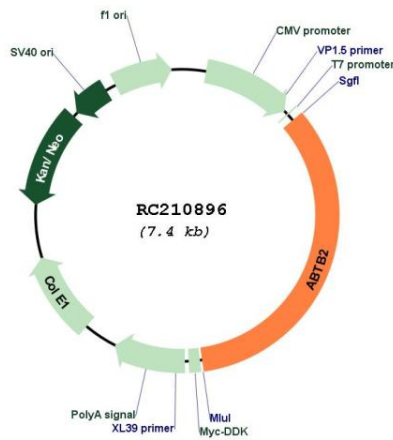
**UniProt ID:** [Q8N961](#)

**Cytogenetics:** 11p13

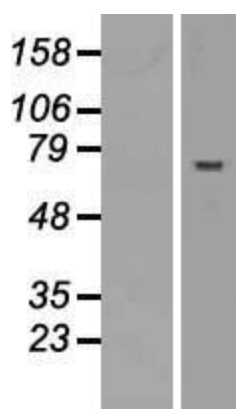
**MW:** 93.3 kDa

**Gene Summary:** May be involved in the initiation of hepatocyte growth.[UniProtKB/Swiss-Prot Function]

**Product images:**



Circular map for RC210896



Western blot validation of overexpression lysate (Cat# [LY407856]) using anti-DDK antibody (Cat# [TA50011-100]). Left: Cell lysates from untransfected HEK293T cells; Right: Cell lysates from HEK293T cells transfected with RC210896 using transfection reagent MegaTran 2.0 (Cat# [TT210002]).