

Product datasheet for **RC210895**

MAGEE2 (NM_138703) Human Tagged ORF Clone

Product data:

Product Type:	Expression Plasmids
Product Name:	MAGEE2 (NM_138703) Human Tagged ORF Clone
Tag:	Myc-DDK
Symbol:	MAGEE2
Synonyms:	HCA3
Mammalian Cell Selection:	Neomycin
Vector:	pCMV6-Entry (PS100001)
E. coli Selection:	Kanamycin (25 ug/mL)



[View online »](#)

ORF Nucleotide Sequence:

>RC210895 ORF sequence
 Red=Cloning site Blue=ORF Green=Tags(s)

TTTTGTAATACGACTCACTATAGGGCGGCCGGGAATTCGTCGACTGGATCCGGTACCGAGGAGATCTGCC
 GCC**CGGATCGCC**

ATGTCTCTGGTAAGCCAGAATGCACGCCACTGTAGCGCAGAGATCACTGCAGATTACGGCGACGGCAGAG
 GTGAAATACAAGCTACTAACGCCTCCGGGTCCCCACCTCCATGCTAGTGTTGATGCCCCAGTGCCC
 TCAGGCGCCAATCAACTCTCAGTGTGTCAACACTTCCCAGGCCGTTACAGACCCGAATGACCTGGAGGTC
 CTGATCGACGAGCAGTCCAGACGTTTGGGGGCGCTCAGGGTCCATGACCTCTAGAAGACAGGTCGATTG
 CTTTGGTGAATTCATGAGAATGAAAAGCCAGACGGAGGGGTCTATCCAGCAGTCCGAGATGCTGGAGTT
 TCTCAGAGAGTACTCAGATCAGTTCCTGAGATCCTCAGACGAGCCTCAGCTCACCTGGACCAGGCTTTT
 GGGTTGAACCTGAGAGTTATTGATCCTCAGGCTGACACCTACAATTTAGTCAGCAAACGGGGTTCCAGA
 TCACCGATAGGATAGCGGAGTCCCTGGACATGCCAAAAGCAAGTCTCCTGGCCCTAGTCTAGGCCACAT
 CCTCTTGAATGGGAACCGAGCAAGAGAGGCCTCCATTTGGGACTTGCTGCTAAAAGTTGATATGTGGGAT
 AAGCCTCAGAGGATCAACAACCTCTTTGGGAACACAAGGAACCTCCTCACTACTGACTTTGTGTGCATGC
 GATTCTTGGAGTACTGGCCGGTGTATGGCACTAATCCCCTTGAGTTTGAGTTCTGTGGGGCTCTAGAGC
 CCACAGGGAAATCACAAGATGGAAGCCCTGAAGTTTGTGTGCAGATGCCCATGATGAAGAACCCTGGAGC
 TGGCCAGAAGAATATAATAAGGCCTGGAAGGTGACAAAACCAAGAAAGAACCTGACTGCTGGCTTAG
 AGTTCTGGTCCGAGGACACTATGAATGATAAGGCAATGATTTGGTCCAGTTGGCTATTAGTGTCACTGA
 GGAGATGCTGCCTATACATCAGGATGAGCTATTGGCTCACACTGGCAAAGAATTTGAGGATGTGTTCCCA
 AATATCCTCAATAGAGCTACTCTAATCTTGATATGTTCTATGGGTTGTCTCTGATTGAGGTTGATACCA
 GTGAGCACATCTACCTCTTGTCCAGCAACCAGAATCAGAGGAAGAGCAAGTGATGCTAGAGAGCCTGGG
 GAGACCCACTCAAGAATATGTAATGCCAATCCTAGGTTTGATCTTCTGTATGGGCAACCGTGTCAAAGAG
 GCCAATGTCTGGAACCTGCTTCAAGATTTAGTGTGGATGTAGGGAGAAAGCATTCCATCACCCGTAAGC
 TTATGAGACAGCGCTATCTGGAATGCAGGCCACTGTCCTACTCTAATCCAGTTGAATATGAGCTTCTATG
 GGGTCTCGAGCTCACCATGAAACCATCAAATGAAAAGTCTTGGAGTACATGGCCAGGCTCTACAGAAA
 CGACCACAGAAGTGGCCAGAACAATATAGGGAGGCTGTGGAAGATGAGGAGGCCAGAGCCAAATCTGAGG
 CAACTATCATGTTTTCTTGACCCACG

ACGCGTACGCGGCCGCTCGAGCAGAAACTCATCTCAGAAGAGGATCTGGCAGCAAATGATATCTGGATT
 ACAAGGATGACGACGATAAGGTTTAA

Protein Sequence:

>RC210895 protein sequence
 Red=Cloning site Green=Tags(s)

MSLVSQNARHCSAEITADYDGRGEIQATNASGSPTSM LVVDAPQCPQAPINSQCVNTSQA VQDPNDLEV
 LI DEQSRRLGALRVHDPLEDRSIALVNFMRMKSQTEGSIQQSEMFLREYSDQFPEILRRASAHLDQVF
 GLNLRVIDPQADTYNLVSKRGFQITDRIAESLDMPKASLLALVLGHILLNGNRAREASIWLLLLKVDMDW
 KPQRINNLFGNTRNLLTDFVCMRFLEYWPVYGTNPLEFEFLWGSRAHREITKMEALKFVSDAHDEEPWS
 WP E EYNKALEGDKTKERSL TAGLEF WSEDTMNDKANDLVQLAISVTEMLPIHQDELLAHTGKEFEDVFP
 NILNRATLILDMFYGLSLIEVDTSEHIYLLVQQPESEEEQVMLESLGRPTQEYVMPILGLIFLMGNRVKE
 ANVWNLLRRFSVDVGRKHSITRKL MRQRYLECRPLSYSNPVEYELLWGPRAHHETIKMKVLEYMARLYRK
 RPQNWPEQYREAVEDEEARAKSEATIMFFLDPT

TRTRPLEQKLI SEEDLAANDILDYKDDDDKV

Chromatograms:

https://cdn.origene.com/chromatograms/mk6592_c02.zip

Restriction Sites:

Sgfl-Mlul

Cloning Scheme:


ACCN: NM_138703

ORF Size: 1569 bp

OTI Disclaimer: The molecular sequence of this clone aligns with the gene accession number as a point of reference only. However, individual transcript sequences of the same gene can differ through naturally occurring variations (e.g. polymorphisms), each with its own valid existence. This clone is substantially in agreement with the reference, but a complete review of all prevailing variants is recommended prior to use. [More info](#)

OTI Annotation: This clone was engineered to express the complete ORF with an expression tag. Expression varies depending on the nature of the gene.

Components: The ORF clone is ion-exchange column purified and shipped in a 2D barcoded Matrix tube containing 10ug of transfection-ready, dried plasmid DNA (reconstitute with 100 ul of water).

- Reconstitution Method:**
1. Centrifuge at 5,000xg for 5min.
 2. Carefully open the tube and add 100ul of sterile water to dissolve the DNA.
 3. Close the tube and incubate for 10 minutes at room temperature.
 4. Briefly vortex the tube and then do a quick spin (less than 5000xg) to concentrate the liquid at the bottom.
 5. Store the suspended plasmid at -20°C. The DNA is stable for at least one year from date of shipping when stored at -20°C.

RefSeq: [NM_138703.5](#)

RefSeq Size: 2257 bp

RefSeq ORF: 1572 bp

Locus ID: 139599

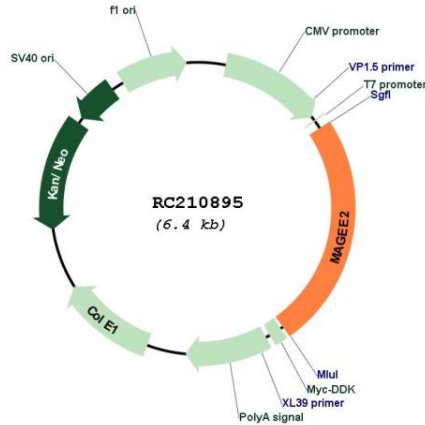
UniProt ID: [Q8TD90](#)

Cytogenetics: Xq13.3

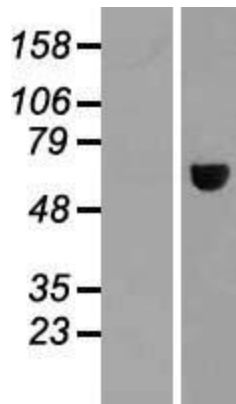
MW: 60.4 kDa

Gene Summary: This gene encodes a member of the E subfamily of MAGE (melanoma antigen-encoding gene) gene family. The gene is intronless and the encoded protein has two of the MAGE domains which are characteristic of MAGE family proteins. [provided by RefSeq, Sep 2011]

Product images:



Circular map for RC210895



Western blot validation of overexpression lysate (Cat# [LY408553]) using anti-DDK antibody (Cat# [TA50011-100]). Left: Cell lysates from untransfected HEK293T cells; Right: Cell lysates from HEK293T cells transfected with RC210895 using transfection reagent MegaTran 2.0 (Cat# [TT210002]).