

Product datasheet for RC210893

GPHA2 (NM_130769) Human Tagged ORF Clone

Product data:

Product Type: Expression Plasmids
Product Name: GPHA2 (NM_130769) Human Tagged ORF Clone
Tag: Myc-DDK
Symbol: GPHA2
Synonyms: A2; GPA2; ZSIG51
Mammalian Cell Selection: Neomycin
Vector: pCMV6-Entry (PS100001)
E. coli Selection: Kanamycin (25 ug/mL)
ORF Nucleotide Sequence: >RC210893 ORF sequence
Red=Cloning site Blue=ORF Green=Tags(s)

TTTTGTAATACGACTCACTATAGGGCGCCGGGAATTCGTCGACTGGATCCGGTACCGAGGAGATCTGCC
GCC**CGATCGCC**

ATGCCTATGGCGTCCCCTCAAACCCTGGTCTCTATCTGCTGGTCTGGCAGTCACTGAAGCCTGGGGCC
AGGAGGCAGTCATCCCAGGCTGCCACTTGACCCCTTCAATGTGACAGTGCGAAGTGACCGCCAAGGCAC
CTGCCAGGGCTCCACGTGGCACAGGCCTGTGTGGCCACTGTGAGTCCAGCGCCTCCCTTCTCGGTAC
TCTGTGCTGGTGGCCAGTGGTTACCGACACAACATCACCTCCGTCTCTCAGTCTGCACCATCAGTGGCC
TGAAGAAGGTCAAAGTACAGCTGCAGTGTGTGGGAGCCGGAGGGAGGAGCTCGAGATCTTCACGGCCAG
GGCTGCCAGTGTGACATGTGTCGCCTCTCTCGCTAC

ACGCGTACGCGGCCGCTCGAGCAGAAACTCATCTCAGAAGAGGATCTGGCAGCAAATGATATCCTGGATT
ACAAGGATGACGACGATAAGGTTTAA

Protein Sequence: >RC210893 protein sequence
Red=Cloning site Green=Tags(s)

MPMASPQTLVLYLLVLAVTEAWGQEAVIPGCHLHPFNVTVRSRQGTCCQGSVAQACVGHCESSAFPSRY
SVLVASGYRHNITSVVSQCCTISGLKVKVQLQCVGSRREELEIFTARACQCDMRLSRY

TRTRPLEQKLISEEDLAANDILDYKDDDDKV

Chromatograms: https://cdn.origene.com/chromatograms/mk6382_e09.zip

Restriction Sites: SgfI-MluI



[View online »](#)

Cloning Scheme:


ACCN: NM_130769

ORF Size: 387 bp

OTI Disclaimer: The molecular sequence of this clone aligns with the gene accession number as a point of reference only. However, individual transcript sequences of the same gene can differ through naturally occurring variations (e.g. polymorphisms), each with its own valid existence. This clone is substantially in agreement with the reference, but a complete review of all prevailing variants is recommended prior to use. [More info](#)

OTI Annotation: This clone was engineered to express the complete ORF with an expression tag. Expression varies depending on the nature of the gene.

Components: The ORF clone is ion-exchange column purified and shipped in a 2D barcoded Matrix tube containing 10ug of transfection-ready, dried plasmid DNA (reconstitute with 100 ul of water).

- Reconstitution Method:**
1. Centrifuge at 5,000xg for 5min.
 2. Carefully open the tube and add 100ul of sterile water to dissolve the DNA.
 3. Close the tube and incubate for 10 minutes at room temperature.
 4. Briefly vortex the tube and then do a quick spin (less than 5000xg) to concentrate the liquid at the bottom.
 5. Store the suspended plasmid at -20°C. The DNA is stable for at least one year from date of shipping when stored at -20°C.

RefSeq: [NM_130769.4](#)

RefSeq Size: 774 bp

RefSeq ORF: 390 bp

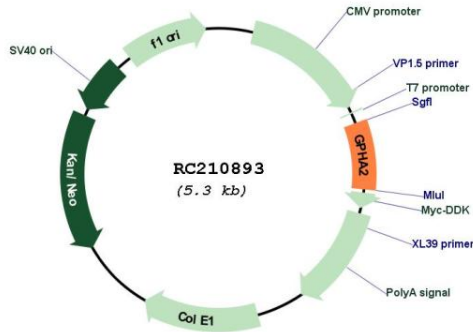
Locus ID: 170589

UniProt ID: [Q96T91](#)

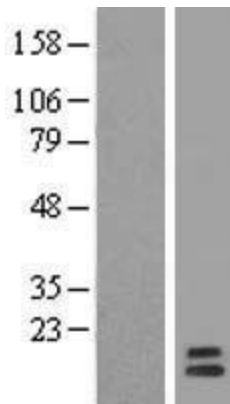
Cytogenetics: 11q13.1
Protein Families: Secreted Protein
MW: 14.2 kDa

Gene Summary: GPHA2 is a cystine knot-forming polypeptide and a subunit of the dimeric glycoprotein hormone family (Hsu et al., 2002 [PubMed 12089349]).[supplied by OMIM, Mar 2008]

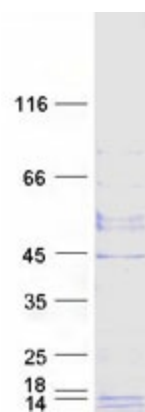
Product images:



Circular map for RC210893



Western blot validation of overexpression lysate (Cat# [LY408932]) using anti-DDK antibody (Cat# [TA50011-100]). Left: Cell lysates from untransfected HEK293T cells; Right: Cell lysates from HEK293T cells transfected with RC210893 using transfection reagent MegaTran 2.0 (Cat# [TT210002]).



Coomassie blue staining of purified GPHA2 protein (Cat# [TP310893]). The protein was produced from HEK293T cells transfected with GPHA2 cDNA clone (Cat# RC210893) using MegaTran 2.0 (Cat# [TT210002]).