

## Product datasheet for **RC210888**

### ING1 (NM\_198218) Human Tagged ORF Clone

#### Product data:

Product Type:	Expression Plasmids
Product Name:	ING1 (NM_198218) Human Tagged ORF Clone
Tag:	Myc-DDK
Symbol:	ING1
Synonyms:	p24ING1c; p33; p33ING1; p33ING1b; p47; p47ING1a
Mammalian Cell Selection:	Neomycin
Vector:	pCMV6-Entry (PS100001)
E. coli Selection:	Kanamycin (25 ug/mL)
ORF Nucleotide Sequence:	>RC210888 ORF sequence Red=Cloning site Blue=ORF Green=Tags(s)

TTTTGTAATACGACTCACTATAGGGCGGCCGGAATTCGTCGACTGGATCCGGTACCGAGGAGATCTGCC  
GCC**CGATCGCC**

ATGTTGAGTCCTGCCAACGGGGAGCAGCTCCACCTGGTGAACATGTGGAGGACTACCTGGACTCCATCG  
AGTCCCTGCCTTCGACTTGCAGAGAAATGTCTCGCTGATGCGGGAGATCGACGCGAAATACCAAGAGAT  
CCTGAAGGAGCTAGACGAGTGCTACGAGCGCTCAGTCGCGAGACAGACGGGGCGCAGAAGCGCGGATG  
CTGCACGTGTGCAGCGCGCTGATCCGACGCCAGGAGCTGGGCGACGAGAAGATCCAGATCGTGAGCC  
AGATGGTGGAGCTGGTGGAGAACCACGCGCGCAGGTGGACAGCCACGTGGAGCTGTTTCGAGGCGCAGCA  
GGAGCTGGGCGACACAGCGGGCAACAGCGCAAGGCTGGCGCGGACAGGCCAAAGGCGAGGCGGCAGCG  
CAGGCTGACAAGCCCAACAGCAAGCGCTCACGGCGGCAGCGCAACAACGAGAACCCTGAGAACCGCTCCA  
GCAACCACGACCACGACGACGGCGCCTCGGGCACACCCAAGGAGAAGAAGGCCAAGACCTCCAAGAAGAA  
GAAGCGCTCCAAGGCCAAGGCGGAGCGAGAGGCGTCCCCGACCTCCCCATCGACCCCAACGAACCC  
ACGTAAGTGTCTGTGCAACCAGGTCTCCTATGGGGAGATGATCGGCTGCGACAACGACGAGTGCCCATCG  
AGTGGTTCACCTCTCGTGCGTGGGGCTCAATCATAAACCCAAGGGCAAGTGGTACTGTCCCAAGTGCCG  
GGGGGAGAACGAGAAGACCATGGACAAAGCCCTGGAGAAATCCAAAAAGAGAGGGCTTACAACAGG

AG**CGGACCG**ACGCGTACGCGGCCGCTCGAGCAGAAACTCATCTCAGAAGAGGATCTGGCAGCAAATGATATCC  
TGGATTACAAGGATGACGACGATAAGGTTTAA



[View online »](#)

**Protein Sequence:** >RC210888 protein sequence  
 Red=Cloning site Green=Tags(s)

MLSPANGQLHLVNYVEDYLDIESLPFDLQRNVSLMREIDAKYQEILKELDECYERFSRETGDAQKRRM  
 LHCVQRALIRSQELGDEKIQIVSQMVVELVENRTRQVDSHVELFEAQQELGDTAGNSGKAGADRPKGEAAA  
 QADKPNSKRSRQRNNENRENASSNHDHDDGASGTPKEKKAKTSKSKKRSKAKAEREASPADLPIDPNEP  
 TYCLCNQVSYGEMIGCDNDECEIWFHFSCVGLNHHKPKGWYCPKCRGENEKTMDKALEKSKKERAYNR

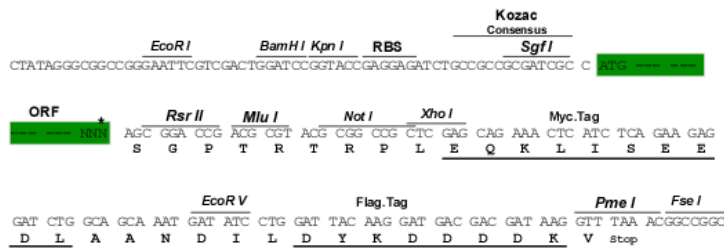
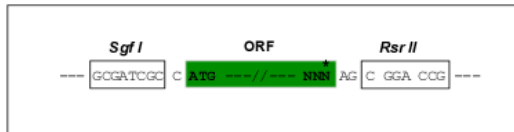
SGPTRRTRPLEQKLI SEEDLAANDILDYKDDDDKV

**Chromatograms:** [https://cdn.origene.com/chromatograms/mk6183\\_c03.zip](https://cdn.origene.com/chromatograms/mk6183_c03.zip)

**Restriction Sites:** SgfI-RsrII

**Cloning Scheme:**

Cloning sites used for ORF Shuttling:



\* The last codon before the Stop codon of the ORF

**ACCN:** NM\_198218

**ORF Size:** 840 bp

**OTI Disclaimer:** The molecular sequence of this clone aligns with the gene accession number as a point of reference only. However, individual transcript sequences of the same gene can differ through naturally occurring variations (e.g. polymorphisms), each with its own valid existence. This clone is substantially in agreement with the reference, but a complete review of all prevailing variants is recommended prior to use. [More info](#)

**OTI Annotation:** This clone was engineered to express the complete ORF with an expression tag. Expression varies depending on the nature of the gene.

**Components:** The ORF clone is ion-exchange column purified and shipped in a 2D barcoded Matrix tube containing 10ug of transfection-ready, dried plasmid DNA (reconstitute with 100 ul of water).

**Reconstitution Method:**

1. Centrifuge at 5,000xg for 5min.
2. Carefully open the tube and add 100ul of sterile water to dissolve the DNA.
3. Close the tube and incubate for 10 minutes at room temperature.
4. Briefly vortex the tube and then do a quick spin (less than 5000xg) to concentrate the liquid at the bottom.
5. Store the suspended plasmid at -20°C. The DNA is stable for at least one year from date of shipping when stored at -20°C.

**RefSeq Size:** 2188 bp

**RefSeq ORF:** 633 bp

**Locus ID:** 3621

**UniProt ID:** [Q9UK53](#)

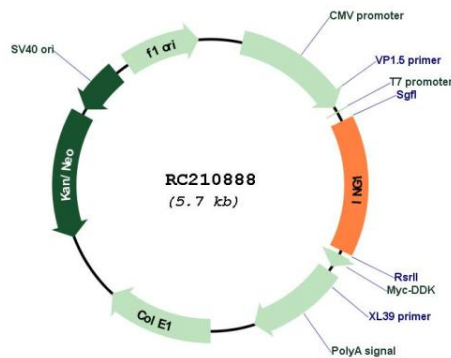
**Cytogenetics:** 13q34

**Protein Families:** Druggable Genome, Transcription Factors

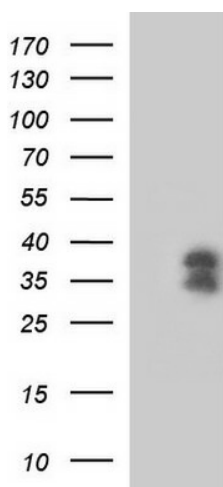
**MW:** 31.9 kDa

**Gene Summary:** This gene encodes a tumor suppressor protein that can induce cell growth arrest and apoptosis. The encoded protein is a nuclear protein that physically interacts with the tumor suppressor protein TP53 and is a component of the p53 signaling pathway. Reduced expression and rearrangement of this gene have been detected in various cancers. Multiple alternatively spliced transcript variants encoding distinct isoforms have been reported. [provided by RefSeq, Jul 2008]

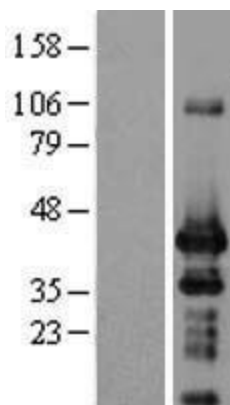
### Product images:



Circular map for RC210888



HEK293T cells were transfected with the pCMV6-ENTRY control (Cat# [PS100001], Left lane) or pCMV6-ENTRY ING1 (Cat# RC210888, Right lane) cDNA for 48 hrs and lysed. Equivalent amounts of cell lysates (5 ug per lane) were separated by SDS-PAGE and immunoblotted with anti-ING1 (Cat# [TA590316]). Positive lysates [LY403677] (100ug) and [LC403677] (20ug) can be purchased separately from OriGene.



Western blot validation of overexpression lysate (Cat# [LY403677]) using anti-DDK antibody (Cat# [TA50011-100]). Left: Cell lysates from untransfected HEK293T cells; Right: Cell lysates from HEK293T cells transfected with RC210888 using transfection reagent MegaTran 2.0 (Cat# [TT210002]).