

Product datasheet for **RC210887**

DORFIN (RNF19A) (NM_183419) Human Tagged ORF Clone

Product data:

Product Type:	Expression Plasmids
Product Name:	DORFIN (RNF19A) (NM_183419) Human Tagged ORF Clone
Tag:	Myc-DDK
Symbol:	DORFIN
Synonyms:	RNF19
Mammalian Cell Selection:	Neomycin
Vector:	pCMV6-Entry (PS100001)
E. coli Selection:	Kanamycin (25 ug/mL)



[View online »](#)

ORF Nucleotide Sequence:

>RC210887 representing NM_183419
 Red=Cloning site Blue=ORF Green=Tags(s)

TTTTGTAATACGACTCACTATAGGGCGGCCGGAATTCGTGACTGGATCCGGTACCGAGGAGATCTGCC
 GCC**CGCATCGCC**

ATGCAAGAACAAGAAATAGGTTTTATCTCTAAATAAATGAAGGGCTGTGTGTAACACTGACCCTGTCT
 CAATTCTAACAGCATTTTAGACATGAGTTACATCGGCAAAATGGTTTCAGATCGAGATCTTCAGTCCTC
 TGCTTCATCTGTGAGCTTGCCTTCAGTCAAAAAGGCACCCAAAAAAGAAGAATTTCAATAGGCTCCCTG
 TTTGCGAGGAAAAAGATAACAAACGTAATCAAGGGAGCTAAATGGCGGGTGGATGGAATGCAAGTA
 TTGAAAGTATACATTCTGAAATGTGACTGATAAGAACTCCATTTTCTCTACAAATACCTCTTGACAA
 TGGATTAACCTCCATCAGCAACAAATGGAGACTTCATAGAGTGCCTTTTGCCTTTTGCGCATTCT
 AAAGACAGATTTCTGATATAATGACTTGTTCATCACAGATCTTGTGTGGATTGCTTACGACAATATTTAA
 GGATAGAAATCTCTGAAAGCAGAGTTAATATTAGTTGCCAGAATGACTGAACGGTTTAAATCCCATGA
 TATTCGTTGATATTAAGTGATGATGTCTTGATGGAAAAATACGAAGAATTTATGCTTAGACGGTGGCTT
 GTTGCAGATCCTGATTGTAGGTGGTGTCCAGCTCCAGACTGTGGATATGCTGTGATAGCATTGGATGTG
 CCAGCTGTCCAAATTAACCTGTGGGCGAGAGGGCTGTGGAACAGAGTTTTGCTACCACTGTAAACAGAT
 TTGGCACCCCAACCAGACCTGTGATGCTGCTCGACAAGAGAGAGCCAGAGCTTACGTTTGAGAATA
 CGTTCTTCATCCATTAGTTATAGTCAAGAGTCTGGAGCAGCAGCTGATGATATAAAGCCATGTCCACGAT
 GTGCTGCTTATAATAAAGATGAATGATGGGAGCTGCAATCACATGACATGTGCTGTTTGTGGTTGTGA
 GTTTTGTTGGTTGTGATGAAAGAAATCTCAGATTTGCATTATCTAAGTCCATCAGGATGACTTTTTGG
 GGAAGAAACCCCTGGAGCCGAAAGAAGAAATATTGTGCAACTGGGAACACTGGTTGGTCTCCTGTCTG
 GAATCGCTTAAATAGCTGGCATTGCTATTCCTGCAATGATTATTGGCATTCTGTGTATGCGGCCGCAA
 GATTCACAATCGCTATGAAGGCAAGGATGTTTCAAAGCACAACCGAATTTGGCCATAGCAGGTGGTGTA
 ACGTTGTCTGTAATCGTGTCTCCAGTAGTACTGCACTGACTGTAGGTATCGGTGTTCTATTATGTTAG
 CTTATGTCTATGGCGTAGTTCCAATTTCTCTTTGTCGAAGCGGAGTTGTGGAGTCTCAGCAGGCAATGG
 AAAAGGAGTTAGGATTGAATTTGATGATGAAAATGATATAAATGTTGGTGGAACTAACACAGCTGTAGAC
 ACAACATCAGTAGCAGAAGCAGACACAACCAAGCATAGGGGAGGGAAGTGTGGTGGGCTGACTGGCA
 GTTTGAGTGCAAGTGAAGCCACATGGATCGAATAGGAGCCATCCGAGACAACCTGAGTGAACGGCCAG
 CACCATGGCACTAGCTGGAGCCAGTATAACGGGGAGTCTGTGAGGAAGTCCATGGTAAACTGTTTTAAC
 AGGTTGGAAGTACAAGCAGATGTACAGAAAGAACGGTACAGTCTAAGTGGAGAATCTGGCACAGTCAGCT
 TGGGAACAGTTAGTGATAATGCCAGCACCAAGCAATGGCAGGATCCATTCTGAATTCCTACATCCCAT
 GGACAAAGAAGGCAACAGTATGGAGGTGCAAGTAGATATTGAGTCAAAGCCATCCAAATTCAGGCACAAC
 AGTGAAGCAGTAGTGTGGATGATGGCAGTGCCACCCGAAGTCATGCTGGCGGTTTCATCCAGTGGCTTGC
 CTGAAGGTAAATCTAGTGCCACCAAGTGGTCCAAAGAAGCAACAGCAGGGAAAAAATCAAAAAGTGGTAA
 ACTGAGGAAAAAGGGTAACATGAAGATAAATGAGACGAGAGAGGACATGGATGCACAGTTGTTAGAACA
 CAAAGCACGAACCAAGTGAATTTGAGGCTCCATCCCTCAGTGACAGTATGCCTTCTGTAGCAGATTCTC
 ACTCTAGTCATTTTTCTGAATTTAGTTGTTCTGACCTAGAAAGCATGAAAACCTTCTGTAGTCATGGTTC
 CAGTGATTATCACACCCGCTTTGCTACTGTAAACATTCTCCTGAGGTAGAAAATGACCGTCTGGAAAA
 TCCCCACATCAGTGTAGCATTCTGTGGTTACCCAAACTGCTTCTGTTTCAAGAAGTTTACAGTTGAATC
 ATATTGCTGAAGAACATGGTAACATGGAATAAAACCTAATGTTGATTTATTTTTGGCGATGCACTAAA
 AGAAACAAATAACAACCACTCACATCAGACAATGGAATTAAGTTGCAATTCAGACTGAAATT

ACGCGTACGCGGCCGCTCGAGCAGAACTCATCTCAGAAGAGGATCTGGCAGCAATGATATCCTGGATT
 ACAAGGATGACGACGATAAGGTTTAA

Protein Sequence: >RC210887 representing NM_183419
Red=Cloning site Green=Tags(s)

MQEQEIGFISKYNEGLCVNTDPVSILTSILDMSLHRQMGSDRDLQSSASSVSLPSVKKAPKKRRISIGSL
FRRKKDNKRKSRELNGGVDGSIASIESIHSEMCTDKNSIFSTNTSSDNLTSISKQIGDFIECPLCLRHS
KDRFPDIMITCHHRSCVDCLRQYLRIEISESRVNI SCPECTERFNPHDIRLILSDDVLMKEYEFLRRWL
VADPDCRWCPAPDCGYAVIAFGCASCPLTCGREGCGTEFCYHCKQIWHPNQTCDAARQERAQSLRLRTI
RSSSISYSQESGAAADDIKPCPRCAAYIIKMNDGSCNHMTCAVCGCEFCWLCMKEISDLHYLSPSGCTFW
GKKPWSRKKKILWQLGTLVGAPVGIALLIAGIAIPAMIIGIPVYVGRKIHNRYEKDVSKHKRNLAAGGV
TL SVIVSPVVAAVTVGIGVPIMLAYVYGVVPI SLCRSGGCGVSAGNGKGVRIEFDDENDINVGGTNTAVD
TTSVAEARHNPSIGEGSVGGLTGSL SASGSHMDRIGAIRDNLSETASTMALAGASITGSLSGSAMVNCFN
RLEVQADVQKERYSLSGESGTVSLGTVSDNASTKAMAGSILNSYIPLDKEGNSMEVQVDIESKPSKFRHN
SGSSSVDDGSATRSHAGGSSSGLPEGKSSATKWSKEATAGKSKSGKLRKKGNMKINETREDMDAQLLEQ
QSTNSSEFEAPSLSDSMPSVADSHSHFSEFSCSDLESMTSCSHGSSDYHTRFATVNILPEVENDRLN
SPHQCSISVVTQTASCSEVSQLNHIAEEHGNGIKPNVDLYFGDALKETNNHSHQTMELKVAIQTEI

TRTRPLEQKLI SEEDLAANDILDYKDDDDKV

Chromatograms: https://cdn.origene.com/chromatograms/mg2999_f08.zip

Restriction Sites: Sgfl-Mlul

Cloning Scheme:


ACCN: NM_183419

ORF Size: 2514 bp

OTI Disclaimer: The molecular sequence of this clone aligns with the gene accession number as a point of reference only. However, individual transcript sequences of the same gene can differ through naturally occurring variations (e.g. polymorphisms), each with its own valid existence. This clone is substantially in agreement with the reference, but a complete review of all prevailing variants is recommended prior to use. [More info](#)

OTI Annotation: This clone was engineered to express the complete ORF with an expression tag. Expression varies depending on the nature of the gene.

Components: The ORF clone is ion-exchange column purified and shipped in a 2D barcoded Matrix tube containing 10ug of transfection-ready, dried plasmid DNA (reconstitute with 100 ul of water).

Reconstitution Method:

1. Centrifuge at 5,000xg for 5min.
2. Carefully open the tube and add 100ul of sterile water to dissolve the DNA.
3. Close the tube and incubate for 10 minutes at room temperature.
4. Briefly vortex the tube and then do a quick spin (less than 5000xg) to concentrate the liquid at the bottom.
5. Store the suspended plasmid at -20°C. The DNA is stable for at least one year from date of shipping when stored at -20°C.

RefSeq: [NM_183419.4](#)

RefSeq Size: 4366 bp

RefSeq ORF: 2517 bp

Locus ID: 25897

UniProt ID: [Q9NV58](#)

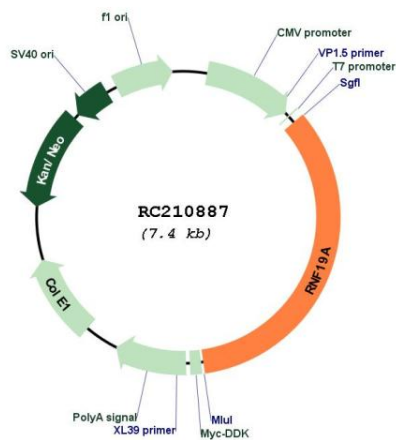
Cytogenetics: 8q22.2

Protein Families: Druggable Genome, Transcription Factors, Transmembrane

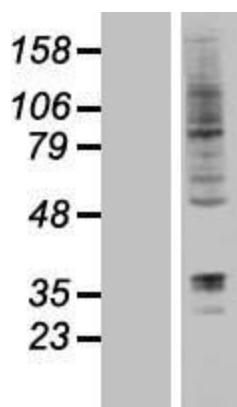
MW: 90.5 kDa

Gene Summary: This gene encodes a member of the ring between ring fingers (RBR) protein family, and the encoded protein contains two RING-finger motifs and an in between RING fingers motif. This protein is an E3 ubiquitin ligase that is localized to Lewy bodies, and ubiquitylates synphilin-1, which is an interacting protein of alpha synuclein in neurons. The encoded protein may be involved in amyotrophic lateral sclerosis and Parkinson's disease. Alternative splicing results in multiple transcript variants. [provided by RefSeq, Jul 2013]

Product images:



Circular map for RC210887



Western blot validation of overexpression lysate (Cat# [LY414552]) using anti-DDK antibody (Cat# [TA50011-100]). Left: Cell lysates from untransfected HEK293T cells; Right: Cell lysates from HEK293T cells transfected with [RC222087] using transfection reagent MegaTran 2.0 (Cat# [TT210002]).