

Product datasheet for **RC210883**

EP2 (PTGER2) (NM_000956) Human Tagged ORF Clone

Product data:

Product Type: Expression Plasmids
Product Name: EP2 (PTGER2) (NM_000956) Human Tagged ORF Clone
Tag: Myc-DDK
Symbol: EP2
Synonyms: EP2
Mammalian Cell Selection: Neomycin
Vector: pCMV6-Entry (PS100001)
E. coli Selection: Kanamycin (25 ug/mL)
ORF Nucleotide Sequence: >RC210883 representing NM_000956
 Red=Cloning site Blue=ORF Green=Tags(s)

TTTTGTAATACGACTCACTATAGGGCGCCGGGAATTCGTCGACTGGATCCGGTACCGAGGAGATCTGCC
 GCC**CGATCGCC**

ATGGGCAATGCCTCCAATGACTCCCAGTCTGAGGACTGCGAGACGCGACAGTGGCTTCCCCAGGCGAAA
 GCCCAGCCATCAGCTCCGTCATGTTCTCGGCCGGGGTGTGGGAACTCATAGCACTGGCGTGTGGC
 GCGCCGCTGGCGGGGGACGTGGGTGCAGCGCCGCCGAGGAGCTCCCTCTCCTTGTCCACGTGCTG
 GTGACCGAGCTGGTGTTCACCGACCTGCTCGGGACCTGCCTCATCAGCCAGTGGTACTGGCTTCGTACG
 CGCGGAACCAGACCCTGGTGGCACTGGCGCCCGAGAGCCGCGCGTGCACCTACTTCGCTTTCGCCATGAC
 CTCTTTCAGCCTGGCCACGATGCTCATGCTCTTCGCCATGGCCCTGGAGCGCTACCTCTCGATCGGGCAC
 CCCTACTTCTACCAGCGCCGCTCTCGCGCTCCGGGGCCCTGGCCGTGCTGCCTGTCTATGCACTCT
 CCCTGCTCTTCTGCTCGCTGCCGCTGCTGGACTATGGGCAGTACGTCCAGTACTGCCCGGGACCTGGT
 TTTCATCCGGCACGGGCGGACCGTTACCTGCAGCTGTACGCCACCTGTGCTGCTTCTCATTGTCTCG
 GTGCTCGCCTGCAACTTCAGTGTATTCTAACCTCATCCGATGCACCGCCGAAGCCGGAAGCCGCT
 GCGGACCTTCCCTGGGACGTGGCCGGGGCGCCCGGGGGCCGCGAGGAGAGGGGAAAGGGTGTCCATGGC
 GGAGGAGACGGACCACCTCATTCTCTGGCTATCATGACCATCACCTTCGCCGTGCTCCTTGCCTTTC
 ACGATTTTGCATATGAAATGAAACCTTCCCGAAAGGAAAAATGGGACCTCCAAGCTTAGGTTTT
 TATCAATTAATCAATAATTGACCTTGGGTCTTTGCCATCCTTAGGCCTCCTGTTCTGAGACTAATGCG
 TTCAGTCTCTGTTGTCGGATTTCAATTAAGAACAAGATGCAACACAACTTCTGTTCTACACAGTCA
 GATGCCAGTAAACAGGCTGACCTT

ACGCGTACGCGGCCGCTCGAGCAGAAAACCTCATCTCAGAAGAGGATCTGGCAGCAAATGATATCCTGGATT
 ACAAGGATGACGACGATAAGGTTAA



[View online »](#)

Protein Sequence: >RC210883 representing NM_000956
Red=Cloning site Green=Tags(s)

MGNASNDSQSEDCETRQWLPPGESPAISSVMFSAGVLGNLIALALLARRWRGDVGCASAGRSSLFLFHV
 VTELVFTDLLGTCLISPVVLASYARNQTLVALAPESRACTYFAFAMTFFSLATMLMLFAMALERYLSIGH
 PIFYQRRVSRSGGLAVLPVIYAVSLFLCPLLDYGGYVQYCPGTWCFIRHGRTAYLQLYATLLLLLIIVS
 VLACNFSVILNLRMHRRSRRSRCPGSLGSGRGGPGARRRGERSMAEETHLILLAIMTITFAVCSLPF
 TIFAYMNETSSRKEKWDLQALRFLSINSIIDPWVFAILRPPVLRMLRMSVLCRISLRTQDATQTSCTSQS
 DASKQADL

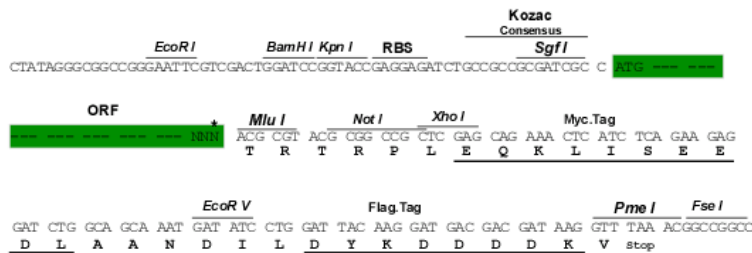
TRTRPLEQKLISEEDLAANDILDYKDDDDKV

Chromatograms: https://cdn.origene.com/chromatograms/mg3047_e05.zip

Restriction Sites: SgfI-MluI

Cloning Scheme:

Cloning sites used for ORF Shuttling:



* The last codon before the Stop codon of the ORF

ACCN: NM_000956

ORF Size: 1074 bp

OTI Disclaimer: The molecular sequence of this clone aligns with the gene accession number as a point of reference only. However, individual transcript sequences of the same gene can differ through naturally occurring variations (e.g. polymorphisms), each with its own valid existence. This clone is substantially in agreement with the reference, but a complete review of all prevailing variants is recommended prior to use. [More info](#)

OTI Annotation: This clone was engineered to express the complete ORF with an expression tag. Expression varies depending on the nature of the gene.

Components: The ORF clone is ion-exchange column purified and shipped in a 2D barcoded Matrix tube containing 10ug of transfection-ready, dried plasmid DNA (reconstitute with 100 ul of water).

Reconstitution Method:

1. Centrifuge at 5,000xg for 5min.
2. Carefully open the tube and add 100ul of sterile water to dissolve the DNA.
3. Close the tube and incubate for 10 minutes at room temperature.
4. Briefly vortex the tube and then do a quick spin (less than 5000xg) to concentrate the liquid at the bottom.
5. Store the suspended plasmid at -20°C. The DNA is stable for at least one year from date of shipping when stored at -20°C.

Note: Plasmids are not sterile. For experiments where strict sterility is required, filtration with 0.22um filter is required.

RefSeq: [NM_000956.4](#)

RefSeq Size: 2395 bp

RefSeq ORF: 1077 bp

Locus ID: 5732

UniProt ID: [P43116](#)

Cytogenetics: 14q22.1

Domains: 7tm_1

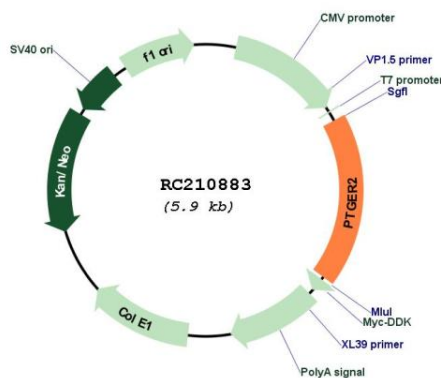
Protein Families: Druggable Genome, GPCR, Transmembrane

Protein Pathways: Neuroactive ligand-receptor interaction

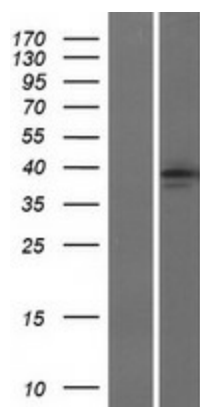
MW: 39.6 kDa

Gene Summary: This gene encodes a receptor for prostaglandin E2, a metabolite of arachidonic acid which has different biologic activities in a wide range of tissues. Mutations in this gene are associated with aspirin-induced susceptibility to asthma. [provided by RefSeq, Oct 2009]

Product images:



Circular map for RC210883



Western blot validation of overexpression lysate (Cat# [LY424431]) using anti-DDK antibody (Cat# [TA50011-100]). Left: Cell lysates from untransfected HEK293T cells; Right: Cell lysates from HEK293T cells transfected with RC210883 using transfection reagent MegaTran 2.0 (Cat# [TT210002]).