

Product datasheet for **RC210861**

KDM6A (NM_021140) Human Tagged ORF Clone

Product data:

Product Type:	Expression Plasmids
Product Name:	KDM6A (NM_021140) Human Tagged ORF Clone
Tag:	Myc-DDK
Symbol:	KDM6A
Synonyms:	bA386N14.2; KABUK2; UTX
Mammalian Cell Selection:	Neomycin
Vector:	pCMV6-Entry (PS100001)
E. coli Selection:	Kanamycin (25 ug/mL)
ORF Nucleotide Sequence:	>RC210861 representing NM_021140 Red=Cloning site Blue=ORF Green=Tags(s)

TTTTGTAATACGACTCACTATAGGGCGGCCGGAATTCGTCGACTGGATCCGGTACCGAGGAGATCTGCC
GCC**CGATCGCC**

ATGAAATCCTGCGGAGTGTCTGCTACCGCCGCGCTGCCGCCGCGCTTTCGGTGATGAGGAAAAGA
AAATGGCGCGGGAAAAGCGAGCGGCGAGAGCGAGGAGCGTCCCCAGCCTGACAGCCGAGGAGAGGA
GGCGCTCGGCGGACTGGACAGCCGCTCTCGGGTTCGTGAGATTCATGAAGATGGCGCCAGGACGAAG
GCCCTACTGGCAAGGCTGTTCTGCTGCTATGAATCTCTAATCTTAAAAGCTGAAGGAAAAGTGGAGTCTG
ATTTCTTTGTCAATTAGGTCACCTCAACCTCTATTGGAAGATTATCCAAAAGCATTATCTGCATACCA
GAGGACTACAGTTTACAGTCTGACTACTGGAAGAATGCTGCCTTTTATATGGTCTTGGTTGGTCTAC
TTCCATTATAATGCATTTCAAGTGGCAATTAAGCATTTCAGGAGGTGCTTTATGTTGATCCCAGCTTTT
GTCGAGCCAAGGAAATTCATTTACGACTTGGGCTTATGTTCAAAGTGAACACAGACTATGAGTCTAGTTT
AAAGCATTTTCAGTTAGCTTTGGTTGACTGTAATCCCTGCACTTTGTCCAATGCTGAAATCAATTTAC
ATTGCCACTTATATGAAACCCAGAGGAAATATCATTCTGCAAAAGAAGCTTATGAACAATTTTGAGA
CAGAGAATCTTTCTGCACAAGTAAAAGCAACTGTCTTACAACAGTTAGGTTGGATGCATCACACTGTAGA
TCTCCTGGGAGATAAAGCCACCAAGGAAAGCTATGCTATTCAGTATCTCCAAAAGTCTTGAAGCAGAT
CCTAATCTGGCCAGTCTGGTATTTCTCGGAAGGTGCTATTCAGTATTGGGAAAGTTCAGGATGCCT
TTATATCTTACAGGCAGTCTATTGATAAATCAGAAGCAAGTGCAGATACATGGTGTCAATAGGTGTGCT
ATATCAGCAGCAAAATCAGCCATGGATGCTTTACAGGCCTATATTTGTGCTGTACAATGGACCATGGC
CATGCTGCAGCCTGGATGGACCTAGGCACTCTCTATGAATCCTGCAACCAGCCTCAGGATGCCATTAAT
GCTACTTAAATGCAACTAGAAGCAAAAGTTGTAGTAATACCTCTGCACTTGCAGCACGAATTAAGTATTT
ACAGGCTCAGTTGTGAACCTCCACAAGGTAGTCTACAGAATAAACTAAATTAATCTAGTATTGAG
GAGGCGTGGAGCCTACCAATCCCAGAGGCTTACCTCCAGGCAGGTTCCATGAACACAGCACAGCAGA
ATACTTCTGACAATTGGAGTGGTGGACATGCTGTGTACATCCTCCAGTACAGCAACAAGCTCATTATG
GTGTTTGACACCAGAAATTACAGCATTGGAACAGCTCCGCGCAAATAGAAATAATTTAAATCCAGCA



[View online »](#)

CAGAAACTGATGCTGGAACAGCTGGAAAGTCAGTTTGTCTTAATGCAACAACACCAAATGAGACCAACAG
GAGTTGCACAGGTACGATCTACTGGAATTCCTAATGGGCCAACAGCTGACTCATCTGCCTACAAACTC
AGTCTCTGGCCAGCAGCCACAGCTTGCTCTGACCAGAGTGCCTAGCGTCTCTCAGCCTGGAGTCCGTCTC
GCCTGCCTGGGCAGCCTTTGGCCAATGGACCCCTTTCTGCAGGCCATGTTCCCTGTAGCACATCAAGAA
CGCTGGGAAGTACAGACACTATTTTGATAGGCAATAATCATATAACAGGAAGTGAAGTAATGGAAACGT
GCCTTACCTGCAGCGAAACGCACTCACTACCTCATAACCGCACAAACCTGACCAGCAGCGCAGAGGAG
CCGTGAAAAACCAACTATCTAACTCCACTCAGGGGCTTACAAAGGTCAGAGTTCACATTCGGCAGGTC
CTAATGGTGAACGACCTCTCTTCCACTGGGCCCTCCAGCATCTCCAGGCAGCTGGCTCTGGTATTCA
GAATCAGAACGGACATCCCACCCTGCCTAGCAATTCAGTAACACAGGGGGCTGCTCTCAATCACCTCTCC
TCTCACACTGCTACCTCAGGTGGACAACAAGGCATTACCTTAACCAAAGAGAGCAAGCCTTCAGGAAACA
TATTGAAGGTGCCTGAAACAAGCAGGCACACTGGAGAGACACCTAACAGCACTGCCAGTGTGAGGGGACT
TCCTAATCATGTCCATCAGATGACGGCAGATGCTGTTTGCAGTCTTAGCCATGGAGATTCTAAGTACCA
GGTTTACTAAGTTCAGACAATCCTCAGCTCTCTGCCTTGTGATGGGAAAAGCCAATAACAATGTGGGTA
CTGGAACCTGTGACAAAGTCAATAACATCCACCAGCTGTTACATAAAAGACTGATAACTCTGTTGCCCTC
TTCACCATCTTCAGCCATTTCAACAGCAACACCTTCTCCAAAATCCACTGAGCAGACAACCACAAACAGT
GTACCAGCCTTAACAGCCCTCAGAGTGGGCTACACACAATTAATGGAGAAGGGATGGAAGAATCTCAGA
GCCCATGAAAAACAGATCTGCTTCTGGTTAACCACAAACCTAGTCCACAGATCATACCATCAATGTCTGT
GTCCATATACCCAGCTCAGCAGAAGTTCTGAAGGCATGCAGGAATCTAGGTAATAATGGCTTATCTAAC
AGTAGCATTTTGTGGATAAATGTCACCTCCAAGACCACCTTTCACCATACCCTCCCTTCCCAAAGG
ACAAGTTGAATCCACCTACACCTAGTATTTACTTGGAAAAATAACGTGATGCTTTCTTCCCTCATTACA
TCAATTTTGTACAAATCCGAACAACCTGTTACAGTAATACGTGGCCTTGGTGGAGCTCTAAGTTAGAC
CTGGGACTTTTCTACTAAAACCTTGGTGGAAAGCTAACAAATGAACATATGGTGAAGTGAGGACACAGT
TGTTGCAGCCAGCAGATGAAAACCTGGGATCCCCTGGAACAAAGAAAATCTGGCATTGTGAAAGTAATAG
ATCTCATACTACAATTGCTAAAATATGCACAGTACCAGGCCCTCCTCATTCCAGGAATCATTGAGAGAAGAA
AATGAAAAAAGAAGTCATCATAAAGACCACTCAGATAGTGAATCTACATCGTCAGATAAATCTGGGAGGA
GGAGGAAAGGACCCTTTAAAACCATAAAGTTTGGGACCAATATTGACCTATCTGATGACAAAAAGTGAA
GTTGCAGCTACATGAGCTGACTAAACTTCTGCTTTTGTGCGTGTGATCAGCAGGAAATCTTCTAAGC
CATGTTGGTCATACCATATTGGGCATGAACACAGTTCACTATACATGAAAGTTCAGGGAGCAGAACAC
CAGGTCATCAGGAAAATAACAACCTTCTGTTCAAGTAAACATAAATATTGGCCAGGTGACTGTGAATGGT
TGTTGTTCTGAAGGTTACTGGGTGTTCTGAATGACTTCTGTGAAAAAATAAATTTGAATTTCTAATG
GGTCTTGGTGGCCCAATCTTGAAGATCTTATGAAGCAATGTTCCAGTGTATAGGTTTATTACGCGAC
CTGGAGATTTGGTCTGGATAAATGCAGGCACTGTTCAATGGGTTCAAGGCTATTGGCTGGTCAACAACAT
TGCTTGAATGTTGGTCCACTTACAGCCTGCCAGTATAAATTGGCAGTGGAACGGTACGAATGGAACAAA
TTGCAAAGTGTGAAGTCAATAGTACCCATGGTTTCATCTTCTGGAATATGGCACGAAATATCAAGGTCT
CAGATCCAAAGCTTTTTGAAATGATTAAGTATTGTCTTCTAAGAACTCTGAAGCAATGTCAGACATTGAG
GGAAGCTCTCATTGCTGCAGGAAAAGAGATTATATGGCATGGGCGGACAAAAGAAGAACCAGCTCATTAC
TGATGATTTGTGAAGTGGAGGTTTTGATCTGCTTTTGTCACTAATGAGAGTAATTCACGAAAGACCT
ACATAGTACATTGCCAAGATTGTGCACGAAAAACAAGCGGAACTTGGAAAACCTTGTGGTGCTAGAACA
GTACAAAATGGAGGACCTGATGCAAGTCTATGACCAATTTACATTAGCTCCTCCATTACCATCCGCTCA
TCT

ACGCGTACGCGGCCGCTCGAGCAGAACTCATCTCAGAAGAGGATCTGGCAGCAATGATATCCTGGATT
ACAAGGATGACGACGATAAGGTTTAA

Protein Sequence: >RC210861 representing NM_021140

Red=Cloning site Green=Tags(s)

MKSCGVS LATAAAAAAFGDEEKMAAGKASGESEEAASPLTAEEREALGGLDSRLFGFVRFHEDGARTK
 ALLGKAVRCYESLILKAEKVESDFFCQLGHFNLLLEDYPKAL SAYQRYYSLQSDYWKNAAFLYGLGLVY
 FHYNAFQWAIKAFQEVLYVDPFCRAKEIHLRLGLMFKNVTDYESSLKHQFQLALVDCNPTLSNAEIQFH
 IAHL YETQRKYHSAKEAYEQLLQTENLSAQVKATVLLQQLGWMHHTVDLLGDKATKESYAIQYLQKSLEAD
 PNSGQSWYFLGRCYSSIGKVQDAFISYRQSIDKSEASADTWCSIGVLYQQNQPM DALQAYICAVQLDHG
 HAAAWMDLGTLYESCNPQDAIKCYLNATR SKSCSNTSALAARIKYLQAQLCNLPQGLSNKTKLLPSIE
 EAWSLPIPAELTSRQGAMNTAQQNTSDNWSGGHAYSHPPVQQQAHSWCLTPQKLQHLQLRANRNLNPA
 QKLMLEQLSQFVLMQQHQMRPTGVAQVRSTGIPNGPTADSSLP TNSVSGQPPQLALTRVPSVSPGVPR
 ACPGQPLANGPFSAGHVP CSTSRTL GSTDTILIGNNHITGSGSNGNVPYLQRNALTLPHNRNTLTSSAEE
 PWKNQLSNSTQGLHKGQSSHSAGPNERPLSSTGPSQHLQAAGSGIQNQNQHPTLPSNSVTQGAALNHLS
 SHTATSGGQQGITLTKESKPSGILKVPETSRHTGETPNSTASVEGLPNHVHQTADAVCSPSHGDSKSP
 GLLSSDNPQLSALLMGKANNVGTGTCDKVNNIHPAVHTKTDNSVASSPSSAISTA TSPSPKSTEQT TNS
 VTSLNPSHSLHTINGEGMEESQSPMKD LLLVNHKPSPQIIPSM SVSIYPSSAEVLKACRN LGKNL SN
 SSILLDKPPRPSPYPLPKDKLNPPTPSIYLENKRDAFFPPLHQFCTNPNPVTVIRGLAGALKLD
 LGLFSTKTLVEANNEHMEVVRTQLQPADENWDPTGKKIWHCESNRSHTTIAKYAQYQASSFQESLREE
 NEKRSHHKDSDSESTSSDN SGRRRKGPFKIKFGTNIIDL SDDKKWKLQLHELTKLPAFVRVVSAGNLLS
 HVGHTILGMNTVQLYMKVPGSRTPGHQENNFCSVNINIGPGDCEWFVPEGYWGLND FCEKNNLFLM
 GSWWPNLEDLYEANVPVYRFIQRPGDLVWINAGTVHWVQAIGWCNNIAWNVGPLTACQYKLAVERYEWNK
 LQSVKSI VPMVHL SWNMARNIKVSDPKLFEMIKYCLLRTLKQCQTLREALIAAGKEI IWHGRTKEEPAHY
 CSI CEVEVFDLLFVTNESNRKTYIVHCQDCARKTSGNLENFVLEEQYK MEDLMQVYDQFTLAPPLPSAS
 S

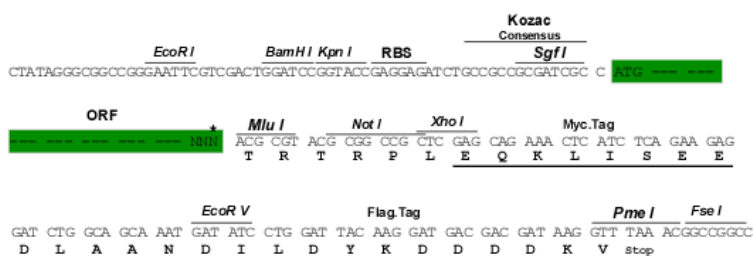
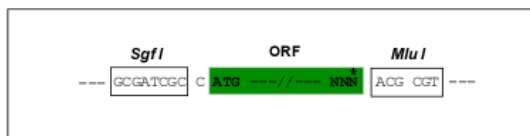
TRTRPLEQKLISEEDLAANDILDYKDDDDKV

Chromatograms: https://cdn.origene.com/chromatograms/mg2553_b12.zip

Restriction Sites: SgfI-MluI

Cloning Scheme:

Cloning sites used for ORF Shutting:



* The last codon before the Stop codon of the ORF

ACCN: NM_021140

ORF Size: 4203 bp

OTI Disclaimer: Due to the inherent nature of this plasmid, standard methods to replicate additional amounts of DNA in E. coli are highly likely to result in mutations and/or rearrangements. Therefore, OriGene does not guarantee the capability to replicate this plasmid DNA. Additional amounts of DNA can be purchased from OriGene with batch-specific, full-sequence verification at a reduced cost. Please contact our customer care team at custsupport@origene.com or by calling 301.340.3188 option 3 for pricing and delivery.

The molecular sequence of this clone aligns with the gene accession number as a point of reference only. However, individual transcript sequences of the same gene can differ through naturally occurring variations (e.g. polymorphisms), each with its own valid existence. This clone is substantially in agreement with the reference, but a complete review of all prevailing variants is recommended prior to use. [More info](#)

OTI Annotation: This clone was engineered to express the complete ORF with an expression tag. Expression varies depending on the nature of the gene.

Components: The ORF clone is ion-exchange column purified and shipped in a 2D barcoded Matrix tube containing 10ug of transfection-ready, dried plasmid DNA (reconstitute with 100 ul of water).

Reconstitution Method:

1. Centrifuge at 5,000xg for 5min.
2. Carefully open the tube and add 100ul of sterile water to dissolve the DNA.
3. Close the tube and incubate for 10 minutes at room temperature.
4. Briefly vortex the tube and then do a quick spin (less than 5000xg) to concentrate the liquid at the bottom.
5. Store the suspended plasmid at -20°C. The DNA is stable for at least one year from date of shipping when stored at -20°C.

RefSeq: [NM_021140.3](#)

RefSeq Size: 5418 bp

RefSeq ORF: 4206 bp

Locus ID: 7403

UniProt ID: [O15550](#)

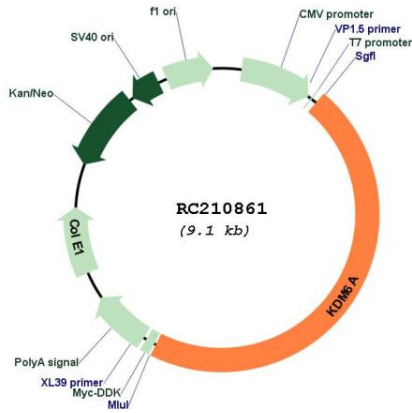
Cytogenetics: Xp11.3

Domains: TPR, JmjC

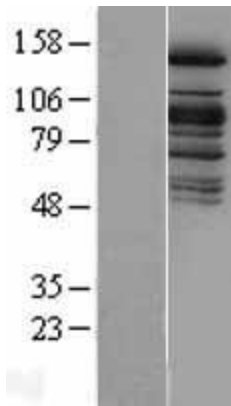
MW: 154 kDa

Gene Summary: This gene is located on the X chromosome and is the corresponding locus to a Y-linked gene which encodes a tetratricopeptide repeat (TPR) protein. The encoded protein of this gene contains a JmjC-domain and catalyzes the demethylation of tri/dimethylated histone H3. Multiple alternatively spliced transcript variants have been found for this gene. [provided by RefSeq, Apr 2014]

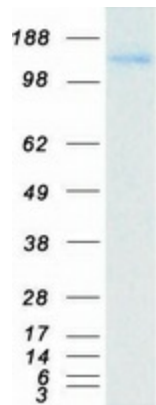
Product images:



Circular map for RC210861



Western blot validation of overexpression lysate (Cat# [LY402844]) using anti-DDK antibody (Cat# [TA50011-100]). Left: Cell lysates from untransfected HEK293T cells; Right: Cell lysates from HEK293T cells transfected with RC210861 using transfection reagent MegaTran 2.0 (Cat# [TT210002]).



Coomassie blue staining of purified KDM6A protein (Cat# [TP310861]). The protein was produced from HEK293T cells transfected with KDM6A cDNA clone (Cat# RC210861) using MegaTran 2.0 (Cat# [TT210002]).