

Product datasheet for **RC210860**

SAP102 (DLG3) (NM_021120) Human Tagged ORF Clone

Product data:

Product Type:	Expression Plasmids
Product Name:	SAP102 (DLG3) (NM_021120) Human Tagged ORF Clone
Tag:	Myc-DDK
Symbol:	DLG3
Synonyms:	MRX; MRX90; NEDLG; PPP1R82; SAP102; XLMR
Mammalian Cell Selection:	Neomycin
Vector:	pCMV6-Entry (PS100001)
E. coli Selection:	Kanamycin (25 ug/mL)



[View online »](#)

ORF Nucleotide
Sequence:

>RC210860 ORF sequence
Red=Cloning site Blue=ORF Green=Tags(s)

TTTTGTAATACGACTCACTATAGGGCGGCCGGGAATTCGTCGACTGGATCCGGTACCGAGGAGATCTGCC
GCC**CGGATCGCC**

ATGCACAAGCACCAGACTGCTGTAAGTGCCTGAGTGTATGAGGTGACCCGCCTGGCCGCCCTGCGGC
GCCTCGAGCCTCCGGGCTACGGCGACTGGCAAGTCCCGACCCTTACGGGCCAGGTGGGGCAACGGCGC
CAGCGCGGGTTATGGGGCTACAGCTCGCAGACCTTGCCCTCGCAGGCGGGGGCCACCCCAACCCCTCGC
ACCAAGGCCAAGCTCATCCACCGCCGGGATGTGGGGCCGGTGCCTCCTAAGCCAGTCCCGGGCAAGA
GCACCCCAAACTCAACGGCAGCGGCCAGCTGGTGGCCAGAGTGCACCTGTACCAACCGGACTGGTA
TGAGCAGGTGAATGGCAGTGTGGCATGTTCAAATATGAGGAAATCGTACTTGAGAGGGGCAACTCTGGC
CTGGGCTTCAGTATCGCAGGTGGCATCGACAATCCCCATGTCCCTGATGACCCTGGCATCTTTATTACCA
AGATTATCCCTGGTGGAGCAGCTGCCATGGATGGGAGGCTGGGGTGAATGACTGTGTGCTGCGGGTGAA
TGAGGTGGACGTGTCGGAGGTGGTACACAGCCGGGCGGTGGAGGGCTGAAGGAGCAGGCCCTGTGGTG
CGATTGGTGGTGGGAGGCGACAGCCTCCACCCGAGACCATCATGGAGGTCAACCTGCTCAAAGGGCCCA
AAGGCCTGGGTTTCAGCATTGCTGGGGGTATTGGCAACCAGCACATCCCAGGAGACAACAGCATCTACAT
CACCAAGATCATTGAGGGGGTGTCTGCTCAGAAGGATGGACGCCTACAGATTGGGGACCGGCTGTGGCG
GTGAACAACACCAATCTGCAGGATGTGAGGCACGAGGAAGCTGTGGCCTCACTGAAGAACACATCTGATA
TGGTGTATTTGAGGTGGCAAGCCAGGCGCCTCCACCTCAACGACATGTACGCTCCCCCTGACTACGC
CAGCACTTTTACTGCCTTGGCTGACAACCACATAAGCCATAATCCAGCCTGGGTATCTCGGGGCTGTG
GAGAGCAAGGTCAGTACCCTGCTCCTCCTCAGGTTCCCCCACCCTACTCTCCTATTTCCAGGCACA
TGCTGGCTGAGGAGGACTTCACCAGAGAGCCTCGCAAGATCATCTGCACAAAGGCTCCACAGGCCTGGG
CTTCAACATCGTAGGAGGAGAGGATGGAGAAGGCATTTTGTCTCCTTCATCCTGGCAGGAGGCCAGCT
GACCTGAGTGGGAGCTGCGCAGGGGAGACCGGATCTTATCGGTGAATGGAGTGAATCTGAGGAATGCAA
CTCATGAGCAGGCTGCAGCTGCTCTGAAACGGGCCGGCCAGTCAGTCACCATTGTGGCCAGTACAGACC
TGAAGAATACAGTCGCTTTGAATCGAAGATACATGACTTACGAGAACAAATGATGAACAGCAGCATGAGC
TCTGGGTCTGGTCCCTCCGAACAAGTGAAGAGGTCCTTGTATGTGAGGGCCCTGTTTGATTATGATC
GGACTCGGACAGCTGCCTGCCAAGCCAGGGGCTCAGCTTCTCTTATGGTACATTCTGCATGTCATTAA
TGCCCTGATGATGAGTGGTGGCAGGCAAGGCTGGTACCCACACGGAGAAAGTGAGCAGATCGGTGTG
ATCCCCAGTAAGAAGAGGTTGAAAAGAAAGAAAGAGCTCGATTGAAAAGTGTGAAGTTCATGCCAGGA
CGGGGATGATTGAGTCTAACAGGACTTCCCGGGTTAAGTGACGATTATTATGGAGCAAAGAACCCTGAA
AGGACAAGAGGATGCTATTTTGTATATGAGCCAGTGACACGGCAAGAAATTCATATGCAAGGCCTGTG
ATCATCTGGGCCAATGAAGGACCGAGTCAATGATGACCTGATCTCCGAATTTCCACATAAATTTGGAT
CCTGTGTGCCACATACTACCCGGCTCGACGTGATAATGAGGTGGATGGACAAGACTACCACTTTGTGGT
GTCCCCGAGAACAATGGAGAAAGATATTCAGGACAACAAGTTCATCGAGGCGGGCCAATTTAATGATAAC
CTCTATGGGACCAGCATCCAGTCAGTGGGGCAGTTGCAGAGAGGGGCAAGCACTGCATCTTAGATGTTT
CCGGCAATGCTATCAAGAGACTGCAGCAAGCACAACCTTTACCCATTGCCATTTTCATCAAGCCCAAGTC
CATTGAAGCCCTTATGGAATGAACCGAAGGCAGACATATGAACAAGCAAATAAGATCTATGACAAAGCC
ATGAAACTGGAGCAGGAATTTGGAGAGTACTTTACAGCCATTGTACAGGGTGACTCACTGGAAAGAGATTT
ATAACAAAATCAAACAAATCATTGAGGACCAGTCTGGGCACTACATTTGGTCCCATCCCCTGAAAAGT
C

ACGCGTACGCGGCCGCTCGAGCAGAACTCATCTCAGAAGAGGATCTGGCAGCAATGATATCCTGGATT
ACAAGGATGACGACGATAAGGTTTAA

Protein Sequence: >RC210860 protein sequence
Red=Cloning site Green=Tags(s)

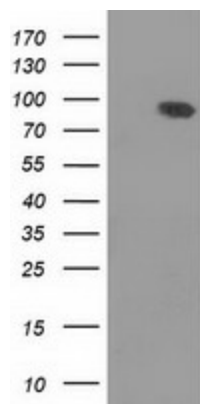
MHKHQHCCKCECYEVTRLAALRRLEPPGYGDWQVPDPYGGGGNGASAGYGGYSSQTLPSQAGATPTPR
TKAKLIPTGRDVGVPVPPKPVPGKSTPKLNGSGPSWWPECTCTNRDWYEQVNGSDGMFKYEEIVLERGNSG
LGF SIAGGIDNPHVDDPGIFITKIIPGGAAAMDGRLGVNDCVLRVNEVDVSEVVHRAVEALKEAGPVV
RLVRRRQPPPETIMEVNLLKGPGLGFSIAGGIGNQHIPGDNSIYITKIEGGAAQKDGRLQIGDRLLA
VNNTNLQDVRHEEAVASLKNTSDMVYLKVAKPGSLHLNDMYAPPDYASTFTALADNHI SHNSSLGYL GAV
ESKVSYPAPPQVPTRYSPIPRHMLAEEDFTREPRKIILHKGSTGLGFNIVGGEDGEGIFVSFILAGGPA
DL SGELRRGDRILSVNGVNLRNATHEQAAAALKRAGQSVTIVAQYRPEEYSRFESKIHDLREQMMNSSMS
SGSGSLRTSEKRSLYVRALFDYDRTRDCLPSQGLSFSYGDILHVINASDDEWWQARLVTPHGESEQIGV
IPSKRVEKKERARLKTVKFHARTGMIESNRDFPGLSDDYYGAKNLKGQEDAILS YEPVTRQEIH YARPV
IILGPMKDRVNDLISEFPHKFGSCVPHTTRPRRDNEVDGQDYHFVVSREQMEKDIQDNKFI EAGQFNDN
LYGTSIQSVRAVAERGKHCILDVSGNAIKRLQQAQLYPIAIFIKPKSIEALMEMNRRQTYEQANKIYDKA
MKLEQEFGEYFTAIVQGSLEEIYNKIKQIIEDQSGHYIWWPSPEKL

TRTRPLEQKLISEEDLAANDILDYKDDDDKV

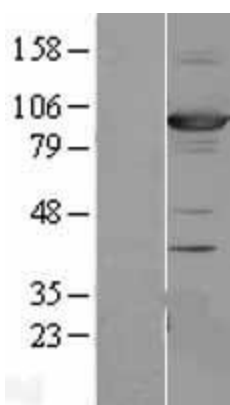
Chromatograms: https://cdn.origene.com/chromatograms/mk6201_d05.zip

Restriction Sites: Sgfl-Mlul

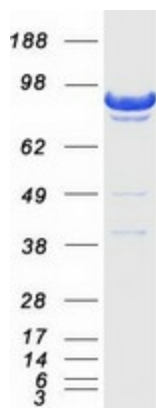
ORF Size:	2451 bp
OTI Disclaimer:	The molecular sequence of this clone aligns with the gene accession number as a point of reference only. However, individual transcript sequences of the same gene can differ through naturally occurring variations (e.g. polymorphisms), each with its own valid existence. This clone is substantially in agreement with the reference, but a complete review of all prevailing variants is recommended prior to use. More info
OTI Annotation:	This clone was engineered to express the complete ORF with an expression tag. Expression varies depending on the nature of the gene.
Components:	The ORF clone is ion-exchange column purified and shipped in a 2D barcoded Matrix tube containing 10ug of transfection-ready, dried plasmid DNA (reconstitute with 100 ul of water).
Reconstitution Method:	<ol style="list-style-type: none">1. Centrifuge at 5,000xg for 5min.2. Carefully open the tube and add 100ul of sterile water to dissolve the DNA.3. Close the tube and incubate for 10 minutes at room temperature.4. Briefly vortex the tube and then do a quick spin (less than 5000xg) to concentrate the liquid at the bottom.5. Store the suspended plasmid at -20°C. The DNA is stable for at least one year from date of shipping when stored at -20°C.
RefSeq:	NM_021120.4
RefSeq Size:	6032 bp
RefSeq ORF:	2454 bp
Locus ID:	1741
UniProt ID:	Q92796
Cytogenetics:	Xq13.1
Domains:	SH3, PDZ, Guanylate_kin, GuKc
MW:	90.3 kDa
Gene Summary:	This gene encodes a member of the membrane-associated guanylate kinase protein family. The encoded protein may play a role in clustering of NMDA receptors at excitatory synapses. It may also negatively regulate cell proliferation through interaction with the C-terminal region of the adenomatous polyposis coli tumor suppressor protein. Mutations in this gene have been associated with X-linked cognitive disability. Alternatively spliced transcript variants have been described. [provided by RefSeq, Oct 2009]

Product images:

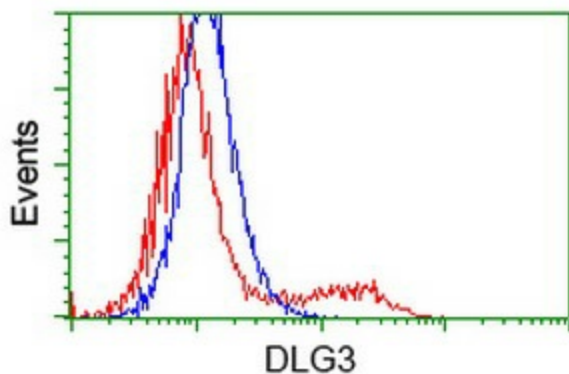
HEK293T cells were transfected with the pCMV6-ENTRY control (Cat# [PS100001], Left lane) or pCMV6-ENTRY DLG3 (Cat# RC210860, Right lane) cDNA for 48 hrs and lysed. Equivalent amounts of cell lysates (5 ug per lane) were separated by SDS-PAGE and immunoblotted with anti-DLG3 (Cat# [TA502191]). Positive lysates [LY402837] (100ug) and [LC402837] (20ug) can be purchased separately from OriGene.



Western blot validation of overexpression lysate (Cat# [LY402837]) using anti-DDK antibody (Cat# [TA50011-100]). Left: Cell lysates from untransfected HEK293T cells; Right: Cell lysates from HEK293T cells transfected with RC210860 using transfection reagent MegaTran 2.0 (Cat# [TT210002]).



Coomassie blue staining of purified DLG3 protein (Cat# [TP310860]). The protein was produced from HEK293T cells transfected with DLG3 cDNA clone (Cat# RC210860) using MegaTran 2.0 (Cat# [TT210002]).



HEK293T cells transfected with either RC210860 overexpress plasmid (Red) or empty vector control plasmid (Blue) were immunostained by anti-DLG3 antibody ([TA502191]), and then analyzed by flow cytometry.