

Product datasheet for **RC210859**

SOX3 (NM_005634) Human Tagged ORF Clone

Product data:

Product Type:	Expression Plasmids
Product Name:	SOX3 (NM_005634) Human Tagged ORF Clone
Tag:	Myc-DDK
Symbol:	SOX3
Synonyms:	GHDX; MRGH; PHP; PHPX; SOXB
Mammalian Cell Selection:	Neomycin
Vector:	pCMV6-Entry (PS100001)
E. coli Selection:	Kanamycin (25 ug/mL)



[View online »](#)

ORF Nucleotide Sequence:

>RC210859 representing NM_005634
 Red=Cloning site Blue=ORF Green=Tags(s)

TTTTGTAATACGACTCACTATAGGGCGGCCGGAATTCGTCGACTGGATCCGGTACCGAGGAGATCTGCC
 GCC**CGGATCGCC**

ATGCGACCTGTTGAGAGAACTCATCAGGTGCGAGAAGCCCGCGGTTCTCTGCTGATTTGGCGGGAGCA
 TTTTGATAAGCCTACCCTTCCCGCGGACTCGCTGGCCACAGGCCCAAGCTCCGCTCCGACGGAGTC
 CCAGGGCCTTTTACCGTGGCCGCTCCAGCCCCGGGAGCGCCTTCTCTCCCGCCACGCTGGCGCACCTT
 CTTCCCGCCCCGCAATGTACAGCCTTCTGGAGACTGAACTCAAGAACCCTAGGGACACCCACACAAG
 CGGCGGGCACCAGCGGCCCGCAGCCCCGGGAGGCGCAGGCAAGAGTAGTGCGAACGCAGCCGGCGCGC
 GAACTCGGGCGGCGCAGCAGCGGTGGTGCAGCGGAGGTGGCGGGGTACAGACCAGGACCGTGTGAAA
 CGGCCATGAACGCCTTCATGGTATGGTCCCGCGGCGAGCGCGCAAAATGGCCCTGGAGAACCCCAAGA
 TGCACAATTCTGAGATCAGCAAGCGCTTGGGCGCCGACTGGAACTGCTGACCGACGCCGAGAAGCGACC
 ATTCATCGACGAGCCAAGCGACTTCGCGCCGTGCACATGAAGGAGTATCCGGACTACAAGTACCGACCG
 CGCCGCAAGACCAAGACGCTGCTCAAGAAAGATAAGTACTCCCTGCCAGCGGCCTCTGCCTCCCGGTG
 CCGCGGCCCGCCGCGCCGCTGCCGCGGCCGAGCCGCTGCCGCCAGCAGTCCGGTGGGCGTGGGCCAGCG
 CCTGGACACGTACACGCACGTGAACGGCTGGGCCAACGGCGCGTACTCGCTGGTGCAGGAGCAGCTGGGC
 TACGCGCAGCCCCGAGCATGAGCAGCCCGCCGCGCCGCGCCGCTGCCGCCATGCACCGCTACGACA
 TGGCCGGCCTGCAGTACAGCCCAATGATGCCGCCCGCGCTCAGAGCTACATGAACGTGCTGCCGCGGC
 CGCCCGCCCTCGGGCTACGGGGCATGGCGCCCTCAGCCACAGCAGCCGCGCCGCCGCTACGGGCAG
 CAGCCCCCACCAGCGCGGCCGAGCTGGCGCCGAGCCGCCATGAGCCTGGGCCCATGGGCTCGGTAG
 TGAAGTCTGAGCCAGCTCGCCCGCCCGCCATCGCATCGCACTCTCAGCGCGCTGCTCGGCGACCT
 CGCGCATGATCAGCATGTACCTGCCACCCGGGGGACGCGCCGACGCCGCTCTCCGCTGCCCGGC
 GGTCCGCTGCACGGCGTGCACCAGCACTACCAGGGCGCCGGGACTGCAGTCAACGGAACGGTGCCGCTGA
 CCCACATC

ACGCGTACGCGGCCGCTCGAGCAGAACTCATCTCAGAAGAGGATCTGGCAGCAATGATATCCTGGATT
 ACAAGGATGACGACGATAAGGTTTAA

Protein Sequence:

>RC210859 representing NM_005634
 Red=Cloning site Green=Tags(s)

MRPVRENSSGARSPRVPADLARSILISLPFPDLSAHRPPSSAPTESQGLFTVAAPAPGAPSPATLAHL
 LPAPAMYSLLETELKNPVGTPPTQAAGTGGPAAPGGAGKSSANAAGGANSGGSSGGASGGGGTDQDRVK
 RPMNAFMVWSRQRRKMALENPKMHNSEISKRLGADWKLTLDAEKRPFIDEAKRLRAVHMKEYPDYKYRP
 RRTKTLKKDKYSLPSGLLPPGAAAAAAAAAAAAAAAASSPVGVGQRLDTYTHVNGWANGAYSLVQEQLG
 YAQPPSMSSPPPPALPPMHRYDMAGLQYSPMPPGAQSYMNVAAAAAAAAASGYGGMAPSATAAAAAYGQ
 QPATAAAAAAAAAAAMSLGPMGSVVKSESPPPAIASHSQRACLGDLRDMI SMYLP PGGDAADAASPLPG
 GRLHGVHQHYQAGTAVNGTVPLTHI

TRTRPLEQKLISEEDLAANDILDYKDDDDKV

Chromatograms:

https://cdn.origene.com/chromatograms/mg3853_d05.zip

Restriction Sites:

Sgfl-Mlul

Cloning Scheme:


ACCN: NM_005634

ORF Size: 1338 bp

OTI Disclaimer: Due to the inherent nature of this plasmid, standard methods to replicate additional amounts of DNA in E. coli are highly likely to result in mutations and/or rearrangements. Therefore, OriGene does not guarantee the capability to replicate this plasmid DNA. Additional amounts of DNA can be purchased from OriGene with batch-specific, full-sequence verification at a reduced cost. Please contact our customer care team at custsupport@origene.com or by calling 301.340.3188 option 3 for pricing and delivery.

The molecular sequence of this clone aligns with the gene accession number as a point of reference only. However, individual transcript sequences of the same gene can differ through naturally occurring variations (e.g. polymorphisms), each with its own valid existence. This clone is substantially in agreement with the reference, but a complete review of all prevailing variants is recommended prior to use. [More info](#)

OTI Annotation: This clone was engineered to express the complete ORF with an expression tag. Expression varies depending on the nature of the gene.

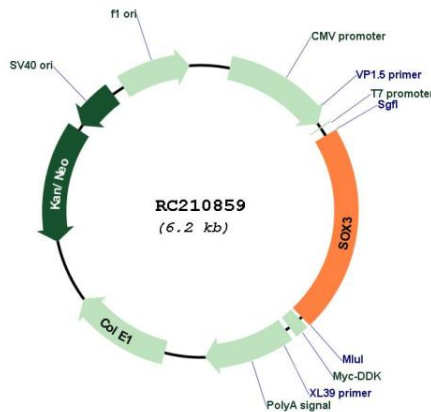
Components: The ORF clone is ion-exchange column purified and shipped in a 2D barcoded Matrix tube containing 10ug of transfection-ready, dried plasmid DNA (reconstitute with 100 ul of water).

- Reconstitution Method:**
1. Centrifuge at 5,000xg for 5min.
 2. Carefully open the tube and add 100ul of sterile water to dissolve the DNA.
 3. Close the tube and incubate for 10 minutes at room temperature.
 4. Briefly vortex the tube and then do a quick spin (less than 5000xg) to concentrate the liquid at the bottom.
 5. Store the suspended plasmid at -20°C. The DNA is stable for at least one year from date of shipping when stored at -20°C.

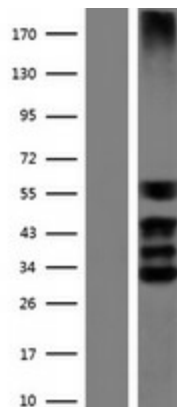
RefSeq: [NM_005634.3](#)
RefSeq Size: 2074 bp
RefSeq ORF: 1341 bp
Locus ID: 6658
UniProt ID: [P41225](#)
Cytogenetics: Xq27.1
MW: 45 kDa

Gene Summary: This gene encodes a member of the SOX (SRY-related HMG-box) family of transcription factors involved in the regulation of embryonic development and in the determination of the cell fate. The encoded protein may act as a transcriptional regulator after forming a protein complex with other proteins. Mutations in this gene have been associated with X-linked cognitive disability with growth hormone deficiency. [provided by RefSeq, Jul 2008]

Product images:



Circular map for RC210859



Western blot validation of overexpression lysate (Cat# [LY417165]) using anti-DDK antibody (Cat# [TA50011-100]). Left: Cell lysates from untransfected HEK293T cells; Right: Cell lysates from HEK293T cells transfected with RC210859 using transfection reagent MegaTran 2.0 (Cat# [TT210002]).