

Product datasheet for **RC210858**

SLC16A11 (NM_153357) Human Tagged ORF Clone

Product data:

Product Type:	Expression Plasmids
Product Name:	SLC16A11 (NM_153357) Human Tagged ORF Clone
Tag:	Myc-DDK
Symbol:	SLC16A11
Synonyms:	MCT 11; MCT11
Mammalian Cell Selection:	Neomycin
Vector:	pCMV6-Entry (PS100001)
E. coli Selection:	Kanamycin (25 ug/mL)



[View online »](#)

ORF Nucleotide Sequence:

>RC210858 ORF sequence
 Red=Cloning site Blue=ORF Green=Tags(s)

TTTTGTAATACGACTCACTATAGGGCGGCCGGAATTCGTCGACTGGATCCGGTACCGAGGAGATCTGCC
 GCC**CGCATCGCC**

ATGCCAGCTCCCCAGCGAAGCACAGGCGTGGAGGCTTCTCTCACAGATGTTTCCCACCCCGCAGACGG
 CGATGACCCCCAGCCCGCGACCCCGGATGGGGGCTGGGGCTGGGTGGTGGCGGCCGAGCCTTCGC
 GATAAACGGGCTGTCTACGGGCTGCTGCGCTCGCTGGGCTTGCCTTCCTGACCTTGGCAGCACTTT
 GACCGAAGCGCCAGGACTGCGTGGATCAGCGCCTGGCCCTGGCCGTGCAGCAGGCAGCCAGCCCTG
 TGGGCAGCGCCCTGAGCACGCGCTGGGGGGCCCGCCCGTGGTATGGTTGGGGGCGTCTCGCCTCGT
 GGGCTTCTGCTTCTCGGCTTTCGCCAGCGATCTGCTGCATCTCTACCTCGGCTGGGCTCCTCGTGGC
 TTTGGTTGGGCCCTGGTGTTCGCCCCGCCCTAGGCACCTCTCGCGTACTTCTCCCGCGTCGAGTCT
 TGGCGGTGGGGCTGGCGCTACCGGCAACGGGGCTCCTCGTGTCTCTGGCGCCCGCTTGCAGCTTCT
 TCTCGATACTTTGGCTGGCGGGGCGCTGCTCCTCCTGGCGCGATCACCTCCACCTCACCCCTGT
 GCGCCCTGCTGTACCCCTGGTCTTCTCGAGACCCCGAGCCCGCCCGCGTGTCCCTAGCTGCC
 TCGGCCTGAGTCTGTTACACGCGCGGCCCTTCAATCTTTGCTCTAGGCACAGCCCTGGTTGGGGCGG
 GTACTTCGTTCTTACGTGCACTTGGCTCCCCACGCTTAGACCGGGGCTGGGGGATACGGAGCAGCG
 CTGGTGGTGGCCGTGGCTGCGATGGGGATGCGGGCGCCCGGCTGGTCTGCGGGTGGCTGGCAGACCAAG
 GCTGGTGCCCTCCCGCGGCTGCTGGCCGATTCGGGGCTGACTGGGCTGGGCTGTGGTGGTGGG
 GCTGGTGGCGTGGTGGCGCGAAGAGAGCTGGGGGGTCCCTGCTGGCCGCGCTGTGGCCTATGGG
 CTGAGCGCGGGGAGTTACGCCCCGCTGGTTTTCGGTGACTCCCCGGGCTGGTGGGCTCGGAGGTGG
 TGCAGGCCACAGGGCTGGTATGATGCTGATGAGCCTCGGGGGCTCCTGGGCCCTCCCTGTGAGGCTT
 CCTAAGGGATGAGACAGGAGACTTACCGCCTCTTCTCCTGTCTGGTCTTTGATCCTCTCCGCGAGC
 TTCATCTACATAGGGTTGCCAGGGCGTGCCTCCTGTGGTCCAGCCTCCCTCCAGCCAGCCTCCCC
 CAGAGACGGGGAGCTGCTTCCCGCTCCCCAGGAGTCTTGTGTCCCCAGGAGGCCCTGGCTCCACTCT
 GGACACCACTTGT

ACGCGTACGCGGCCGCTCGAGCAGAAACTCATCTCAGAAGAGGATCTGGCAGCAAATGATATCCTGGATT
 ACAAGGATGACGACGATAAGGTTTAA

Protein Sequence:

>RC210858 protein sequence
 Red=Cloning site Green=Tags(s)

MPAPQRKHRRGGFSHRCFPTPQTAMTPQPAGPPDGGWGWVAAAAFAINGLSYGLLRSLGLAFPDLAEHF
 DRSAQDTAWISALALAVQQAASPVGSALSTRWGARPVVMVGGVLAASLGFVFSAFASDLLHLYLGLGLLAG
 FGWALVFAPALGTLTRYFSRRRVLAVGLALTNGASSLLAPALQLLLDTFGWRGALLLLGAILHLHTPC
 GALLLPLVLPDPPAPPRSPALGLSLFTRRAFSLFALGTALVGGGYFVPYVHLAPHALDRGLGGYGAA
 LVVAVAAAMDAGARLVCGWLADQGWVPLPRLAVFGAL TGLGLWVVG LVPVVGGEESWGGPLLAAAVAYG
 LSAGSYAPLVFGVLPGLVGVGGVQATGLVMMLSLGGLLGPPLSGFLRDETGFDTASFLLSGSLILSGS
 FIYIGLPRALPSCGPASPPATPPPETGELLPAQAVLLSPGGPGSTLDTTC

TRTRPLEQKLISEEDLAANDILDYKDDDDKV

Chromatograms:

https://cdn.origene.com/chromatograms/mk6382_h11.zip

Restriction Sites:

Sgfl-MluI

Cloning Scheme:



ACCN: NM_153357

ORF Size: 1413 bp

OTI Disclaimer: Due to the inherent nature of this plasmid, standard methods to replicate additional amounts of DNA in E. coli are highly likely to result in mutations and/or rearrangements. Therefore, OriGene does not guarantee the capability to replicate this plasmid DNA. Additional amounts of DNA can be purchased from OriGene with batch-specific, full-sequence verification at a reduced cost. Please contact our customer care team at custsupport@origene.com or by calling 301.340.3188 option 3 for pricing and delivery.

The molecular sequence of this clone aligns with the gene accession number as a point of reference only. However, individual transcript sequences of the same gene can differ through naturally occurring variations (e.g. polymorphisms), each with its own valid existence. This clone is substantially in agreement with the reference, but a complete review of all prevailing variants is recommended prior to use. [More info](#)

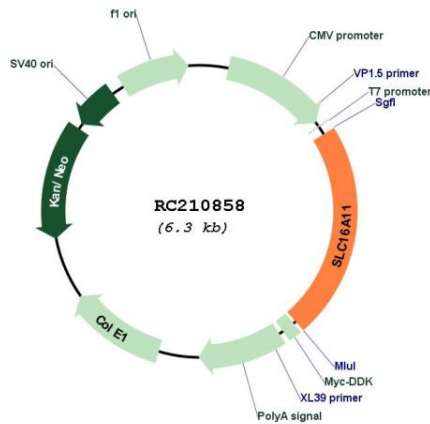
OTI Annotation: This clone was engineered to express the complete ORF with an expression tag. Expression varies depending on the nature of the gene.

Components: The ORF clone is ion-exchange column purified and shipped in a 2D barcoded Matrix tube containing 10ug of transfection-ready, dried plasmid DNA (reconstitute with 100 ul of water).

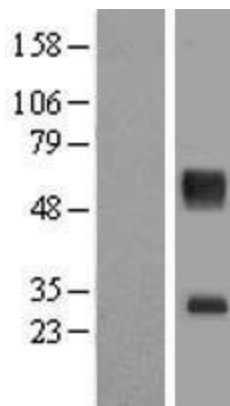
- Reconstitution Method:
1. Centrifuge at 5,000xg for 5min.
 2. Carefully open the tube and add 100ul of sterile water to dissolve the DNA.
 3. Close the tube and incubate for 10 minutes at room temperature.
 4. Briefly vortex the tube and then do a quick spin (less than 5000xg) to concentrate the liquid at the bottom.
 5. Store the suspended plasmid at -20°C. The DNA is stable for at least one year from date of shipping when stored at -20°C.

RefSeq:	NM_153357.1, NP_699188.1
RefSeq Size:	1803 bp
RefSeq ORF:	1344 bp
Locus ID:	162515
UniProt ID:	Q8NCK7
Cytogenetics:	17p13.1
Protein Families:	Transmembrane
MW:	47.8 kDa
Gene Summary:	Proton-linked monocarboxylate transporter. It catalyzes the transport of pyruvate across the plasma membrane (PubMed:28666119). Probably involved in hepatic lipid metabolism: overexpression results in an increase of triacylglycerol(TAG) levels, small increases in intracellular diacylglycerols and decreases in lysophosphatidylcholine, cholesterol ester and sphingomyelin lipids (PubMed:24390345).[UniProtKB/Swiss-Prot Function]

Product images:



Circular map for RC210858



Western blot validation of overexpression lysate (Cat# [LY407070]) using anti-DDK antibody (Cat# [TA50011-100]). Left: Cell lysates from untransfected HEK293T cells; Right: Cell lysates from HEK293T cells transfected with RC210858 using transfection reagent MegaTran 2.0 (Cat# [TT210002]).