

Product datasheet for **RC210852**

TMEM133 (NM_032021) Human Tagged ORF Clone

Product data:

Product Type: Expression Plasmids
Product Name: TMEM133 (NM_032021) Human Tagged ORF Clone
Tag: Myc-DDK
Symbol: TMEM133
Synonyms: AD031
Mammalian Cell Selection: Neomycin
Vector: pCMV6-Entry (PS100001)
E. coli Selection: Kanamycin (25 ug/mL)
ORF Nucleotide Sequence: >RC210852 ORF sequence
Red=Cloning site Blue=ORF Green=Tags(s)

TTTTGTAATACGACTCACTATAGGGCGGCCGGAATTCGTCGACTGGATCCGGTACCGAGGAGATCTGCC
GCC**CGGATCGCC**

ATGACCTCACATCACTGCGTAGGACCCGGAAATCACATCTCCTGGTCAGGTACGAAAAAGAACACAGGC
TTGACTATTGTCCAGAAGTTACTTTCCCTTGACTAAAGGTTCCCTTAGGGTACACATTGCTATTTAA
CTTTGCCTCTACCCTTTTTTGTACCTTCCAAAATCAAGACACTTTTAAGAAACAAAGATGTTTTCTG
AACATTCTGTGCTCCTGCCTGTCTCCTGTTGATTGCAGATGTAATATCGAGTATTCATCAACTGGTCTCA
ATTTCTGAACACATTCCTGTATCCCTCATTGTCACCGTTATCCCCTGCTTCAAATGTGCCAGTTCC
ACTTGGTAATAACGTTGGGAAAATGCAGGTTTATGAA

ACGCGTACGCGGCCGCTCGAGCAGAACTCATCTCAGAAGAGGATCTGGCAGCAAATGATATCCTGGATT
ACAAGGATGACGACGATAAGGTTTAA

Protein Sequence: >RC210852 protein sequence
Red=Cloning site Green=Tags(s)
MTSHHCVGPNGHISWSGHEKEHRLDYCPEVTFPLTKGFPLGYTLLENFASYPFLPSKIKTLLRNKDSFL
NILCPACLLLIRRCNIEYSSTGLNFTVSLIVTVIPLLQNPVPLGNNVGMQVYE

TRTRPLEQKLISEEDLAANDILDYKDDDDKV

Chromatograms: https://cdn.origene.com/chromatograms/mk6382_g11.zip

Restriction Sites: SgfI-MluI



[View online »](#)

Cloning Scheme:


ACCN: NM_032021

ORF Size: 387 bp

OTI Disclaimer: The molecular sequence of this clone aligns with the gene accession number as a point of reference only. However, individual transcript sequences of the same gene can differ through naturally occurring variations (e.g. polymorphisms), each with its own valid existence. This clone is substantially in agreement with the reference, but a complete review of all prevailing variants is recommended prior to use. [More info](#)

OTI Annotation: This clone was engineered to express the complete ORF with an expression tag. Expression varies depending on the nature of the gene.

Components: The ORF clone is ion-exchange column purified and shipped in a 2D barcoded Matrix tube containing 10ug of transfection-ready, dried plasmid DNA (reconstitute with 100 ul of water).

Reconstitution Method:

1. Centrifuge at 5,000xg for 5min.
2. Carefully open the tube and add 100ul of sterile water to dissolve the DNA.
3. Close the tube and incubate for 10 minutes at room temperature.
4. Briefly vortex the tube and then do a quick spin (less than 5000xg) to concentrate the liquid at the bottom.
5. Store the suspended plasmid at -20°C. The DNA is stable for at least one year from date of shipping when stored at -20°C.

RefSeq: [NM_032021.2](#), [NP_114410.1](#)

RefSeq Size: 1866 bp

RefSeq ORF: 390 bp

Locus ID: 83935

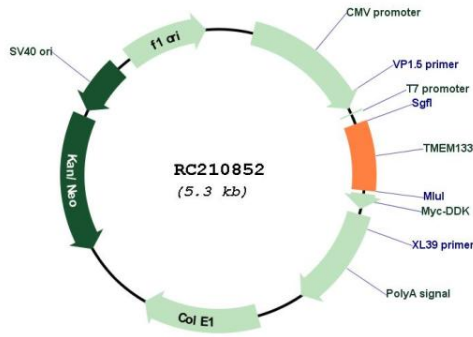
Cytogenetics: 11q22.1

Protein Families: Transmembrane

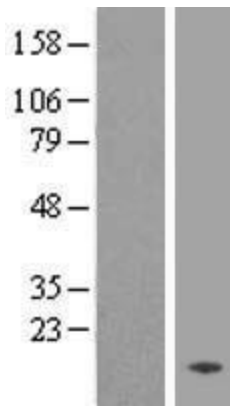
MW: 14.5 kDa

Gene Summary: There is evidence that this intronless gene is transcribed but the protein is predicted. The gene function is unknown. [provided by RefSeq, Jul 2008]

Product images:



Circular map for RC210852



Western blot validation of overexpression lysate (Cat# [LY410346]) using anti-DDK antibody (Cat# [TA50011-100]). Left: Cell lysates from untransfected HEK293T cells; Right: Cell lysates from HEK293T cells transfected with RC210852 using transfection reagent MegaTran 2.0 (Cat# [TT210002]).