

## Product datasheet for RC210849

### SYT13 (NM\_020826) Human Tagged ORF Clone

#### Product data:

Product Type:	Expression Plasmids
Product Name:	SYT13 (NM_020826) Human Tagged ORF Clone
Tag:	Myc-DDK
Symbol:	SYT13
Mammalian Cell Selection:	Neomycin
Vector:	pCMV6-Entry (PS100001)
E. coli Selection:	Kanamycin (25 ug/mL)
ORF Nucleotide Sequence:	>RC210849 ORF sequence Red=Cloning site Blue=ORF Green=Tags(s)

TTTTGTAATACGACTCACTATAGGGCGGCCGGAATTCGTCGACTGGATCCGGTACCGAGGAGATCTGCC  
GCCCGATCGCC

ATGGTGTGTCGGTGCCTGTGATCGCGCTGGGCGCCACGCTGGGCACAGCCACCAGCATCCTCGGTTGT  
GCGGGGTACCTGCCTGTGTCGGCACATGCACCCCAAGAAGGGGTGCTGCCGCGGACCAGGACCCCGA  
CCTGGAGAAGGCGAAGCCAGCTTGCTCGGGTCTGCACAACAGTTCAATGTTAAAAAGTCCACGGAACCT  
GTTCCAGCCCGTGCCTCCTCAAGTTCACAGACATCTATGGACCCAGGCCAGCTGTGACGGTCCAGAGG  
TCATCAACTATGCAGACTATTCAGTCTGAGGCTACGGAGGAGCCACTGCACCTGCCAGCCCAACCC  
GAATGACAGTCGCTCAAGAGGCAGGTACAGAGGAGCTGTTTCCTCCCTCAGAATGGTGTGGTGGAG  
GATGTCTGTGTCATGGAGACCTGGAACCCAGAGAAGGCTGCCAGTTGGAACCCAGGCCCAACTCCACT  
ACTGCCTGGACTATGACTGTGAGAAGGCAGAAATGTTTGTGACTCGCCTGGAAGCTGTGACCAGCAACCA  
CGACGGAGGCTGTGACTGCTACGTCCAAGGGAGTGTGGCCAATAGGACCGGCTCTGTGGAGGCTCAGACA  
GCCCTAAAGAAGCGGCAGCTGCACACCCTGGGAGGAGGGCTGGTCTCCCTGGCGGAGGAGGAGC  
TCCCCACAGCCACCCTGACGCTGACCTTGAGGACCTGCGACCGCTTCTCCCGTACAGCGTGGCCGGGA  
GCTCCGCTGGGCTGGACGGGACATCTGTGCCTTAGGGCTGCCAGTGGGGCAGCTGAAGACTTCA  
GCGAAGGAGCCATCTGCAGGAGCTGGAGAGTCTACTATCCATCAGCTACCTCCCGCTGCCAACCGCC  
TCCTGGTGGTGTGATTAAGCCAAGAACCTCCACTCTAACAGTCCAAGGAGCTCTGGGAAGGATGT  
CTCTGTCAAGGTGACCTTGAAGCACCAGGCTCGGAAGCTGAAGAAGAAGCAGACTAAACGAGCTAAGCAC  
AAGATCAACCCCGTGTGGAACGAGATGATCATGTTTGTGAGCTGCCTGACGACCTGTGCAGGCTCCAGTG  
TGGAGCTGGAAGTGTGGCCAGGACGATTCAGGGCAGAGCTGTGCGCTTGGCCACTGCAGCCTGGGCT  
GCACACCTCGGGCTGTAGCGCAGCCACTGGGAGGAGATGCTCAAAAACCTCGCCGGCAGATTGCCATG  
TGGACCAGCTGCACCTG

ACGCGTACGCGGCCGCTCGAGCAGAACTCATCTCAGAAGAGGATCTGGCAGCAAATGATATCCTGGATT  
ACAAGGATGACGACGATAAGGTTTAA



**Protein Sequence:** >RC210849 protein sequence  
Red=Cloning site Green=Tags(s)

MVLSVPIALGATLGTATSILALCGVTCLCRHMPKGLLPRDQDPLEKAKPSLLGSAQQFNVKKSTEP  
 VQPRALLKFPDIYGRPAVTAPEVINYADYSLRSTEEPTAPASQPPNDSRLKRQVTEELFILPQNGVVE  
 DVCVMTWNPEKAASWNQAPKLHYCLDYDCQKAEFVTRLEAVTSNHDDGGDCYVQGSVANRTGSVEAQT  
 ALKKRQLHTTWEEGLVLPLAEEELPTATLTLTLRTRCDRFSRHSVAGELRLGLDGTSVPLGAAQWDELKTS  
 AKEPSAGAGEVLLSISYLPAAANRLLVVLKAKNLHNSQSKELLGKDVSVKVTLKHQARKLKKKQTKRAKH  
 KINPVWNEMIMFELPDDLLQASSVELEVLGQDDSGQSCALGHCSLGLHTSGSERSHWEMLKNPRRIAM  
 WHQLHL

TRTRPLEQKLISEEDLAANDILDYKDDDDKV

**Chromatograms:** [https://cdn.origene.com/chromatograms/mk6382\\_e01.zip](https://cdn.origene.com/chromatograms/mk6382_e01.zip)

**Restriction Sites:** SgfI-MluI

**Cloning Scheme:**



**ACCN:** NM\_020826

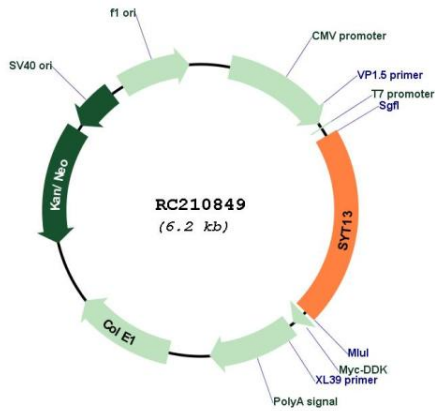
**ORF Size:** 1278 bp

**OTI Disclaimer:** Due to the inherent nature of this plasmid, standard methods to replicate additional amounts of DNA in E. coli are highly likely to result in mutations and/or rearrangements. Therefore, OriGene does not guarantee the capability to replicate this plasmid DNA. Additional amounts of DNA can be purchased from OriGene with batch-specific, full-sequence verification at a reduced cost. Please contact our customer care team at [custsupport@origene.com](mailto:custsupport@origene.com) or by calling 301.340.3188 option 3 for pricing and delivery.

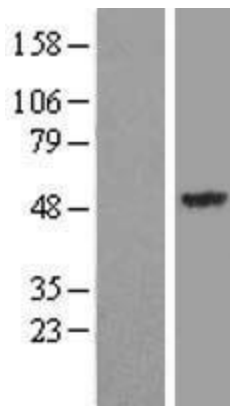
The molecular sequence of this clone aligns with the gene accession number as a point of reference only. However, individual transcript sequences of the same gene can differ through naturally occurring variations (e.g. polymorphisms), each with its own valid existence. This clone is substantially in agreement with the reference, but a complete review of all prevailing variants is recommended prior to use. [More info](#)

<b>OTI Annotation:</b>	This clone was engineered to express the complete ORF with an expression tag. Expression varies depending on the nature of the gene.
<b>Components:</b>	The ORF clone is ion-exchange column purified and shipped in a 2D barcoded Matrix tube containing 10ug of transfection-ready, dried plasmid DNA (reconstitute with 100 ul of water).
<b>Reconstitution Method:</b>	<ol style="list-style-type: none"><li>1. Centrifuge at 5,000xg for 5min.</li><li>2. Carefully open the tube and add 100ul of sterile water to dissolve the DNA.</li><li>3. Close the tube and incubate for 10 minutes at room temperature.</li><li>4. Briefly vortex the tube and then do a quick spin (less than 5000xg) to concentrate the liquid at the bottom.</li><li>5. Store the suspended plasmid at -20°C. The DNA is stable for at least one year from date of shipping when stored at -20°C.</li></ol>
<b>RefSeq:</b>	<a href="#">NM_020826.3</a>
<b>RefSeq Size:</b>	5184 bp
<b>RefSeq ORF:</b>	1281 bp
<b>Locus ID:</b>	57586
<b>UniProt ID:</b>	<a href="#">Q7L8C5</a>
<b>Cytogenetics:</b>	11p11.2
<b>Domains:</b>	C2
<b>Protein Families:</b>	Transmembrane
<b>MW:</b>	46.9 kDa
<b>Gene Summary:</b>	This gene encodes a member of the large synaptotagmin protein family. Family members have an extracellular N-terminal transmembrane domain and a cytoplasmic C terminus with two tandem C2 domains (C2A and C2B). Synaptotogmin family members can form homo- and heteromeric complexes with each other. They also have different biochemical properties and developmental profiles, and patterns of tissue distribution. Synaptotagmins function as membrane traffickers in multicellular organisms. Two alternatively spliced transcript variants that encode different protein isoforms have been described for this gene. [provided by RefSeq, Oct 2011]

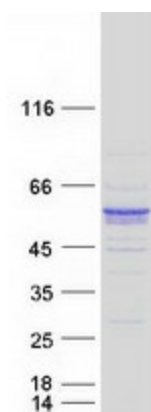
Product images:



Circular map for RC210849



Western blot validation of overexpression lysate (Cat# [LY412297]) using anti-DDK antibody (Cat# [TA50011-100]). Left: Cell lysates from untransfected HEK293T cells; Right: Cell lysates from HEK293T cells transfected with RC210849 using transfection reagent MegaTran 2.0 (Cat# [TT210002]).



Coomassie blue staining of purified SYT13 protein (Cat# [TP310849]). The protein was produced from HEK293T cells transfected with SYT13 cDNA clone (Cat# RC210849) using MegaTran 2.0 (Cat# [TT210002]).