

Product datasheet for **RC210847**

SLC28A3 (NM_022127) Human Tagged ORF Clone

Product data:

Product Type:	Expression Plasmids
Product Name:	SLC28A3 (NM_022127) Human Tagged ORF Clone
Tag:	Myc-DDK
Symbol:	SLC28A3
Synonyms:	CNT3
Mammalian Cell Selection:	Neomycin
Vector:	pCMV6-Entry (PS100001)
E. coli Selection:	Kanamycin (25 ug/mL)



[View online »](#)

ORF Nucleotide
Sequence:

>RC210847 ORF sequence
 Red=Cloning site Blue=ORF Green=Tags(s)

TTTTGTAATACGACTCACTATAGGGCGGCCGGAATTCGTCGACTGGATCCGGTACCGAGGAGATCTGCC
 GCCGCGATCGCC

ATGGAGCTGAGGAGTACAGCAGCCCCAGAGCTGAGGGCTACAGCAACGTGGGCTCCAGAATGAAGAAA
 ACTTTCTTGAGAACGAGAACACATCAGGAAACAACCTCAATAAGAAGCAGAGCTGTCAAAGCAGGGAGCA
 CACAAACACCAAACAGGATGAAGAACAGGTCACAGTTGAGCAGGATTCTCCAAGAAACAGAGAACACATG
 GAGGATGATGATGAGGAGATGCAACAAAAGGGTGTGGAAAGGAGGATGACACGGTATGTGGTTTCT
 GTAGGAAACACAAAACAACCTCTCGGCACATCATCTGGGGCATTATTAGCAGGTTATCTGGTTATGGT
 GATTTCCGGCTGTGTGCTGAACCTTACAGAGCCCTTCTCTTTTTGTGATCACCGTGGCTGCCATCTC
 TTTGTTGCTGGGATCACCTGATGGCAAATACGAACATCGAATTGATGAGATGCTGTCTCTGGCAGAA
 GGCTTCTAAACAGCCATTGGTTCTGGCTGAAGTGGGTGATCTGGAGCTCCCTGGTCTAGCAGTTATTTT
 CTGGTTGGCCTTTGACACTGCCAAATGGGTCAACAGCAGCTGGTGTCTTCGGTGGGCTCATAATGTAC
 ATTGTCCTGTTATTTCTATTCTCCAAGTACCAACAGAGTTTACTGGAGACCTGTCTTATGGGGAATCG
 GGCTACAGTTTCTTCTGGGCTCTTGATTCTAAGGACTGACCCTGGATTTATAGCTTTTGATTGGTTGGG
 CAGACAAGTTCAGACTTTTCTGGAGTACACAGATGCTGGTGTCTCATTGTCTTTGGTGAGAAATACAAA
 GACCACTTCTTTGCATTAAGGTCTGCCGATCGTGGTTTTCTCAGCACTGTGATGTCCATGCTGTACT
 ACCTGGGACTGATGCAGTGGATTATTAGAAAGGTTGGATGGATCATGCTAGTTACTACGGGATCATCTCC
 TATTGAATCTGTAGTTGCTTCTGGCAATATATTTGTTGGACAAACGGAGTCTCCACTGCTGGTCCGACCA
 TATTTACCTTACATCACAAGTCTGAACCTCACGCCATCATGACCGCCGGTTCTCTACCATTGCTGGAA
 GCGTGCTAGGTGCATACATTTCTTTGGGTTCCATCTCCACTTGTTAACAGCGTCAGTTATGTCAGC
 ACCTGCGTCATTGGCTGCTGCTAAACTCTTTGGCCTGAGACAGAAAAACCTAAAATAACCCTCAAGAAT
 GCCATGAAAAATGGAAAGTGGTGATTGAGGAATCTTCTAGAAGCTGCAACACAGGGAGCATCCTCTCCA
 TCTCCCTGGTGGCAACATCGCTGTGAATCTGATTGCCTTCTGGCCCTGCTGTCTTTTGAATTCAGC
 CCTGTCTGGTTTGGAAACATGTTTACTACCCACAGCTGAGTTTTGAGCTAATCTGCTCTACATCTTC
 ATGCCCTTTCTTCAATGATGGGAGTGGAAATGGCAGGACAGCTTTATGGTTGCCAGACTCATAGTTATA
 AGACCTTCTTCAATGAATTTGTGGCTTATGAGCACCTCTCAAAATGGATCCACTGAGGAAAGAAGGTGG
 ACCCAAATTTGTAACGGTGTGCAGCAATATATCAATTCGTTCTGAGATAATCGCCACTTACGCTCTC
 TGTGGTTTTGCCAATATCGGGTCCCTAGGAATCGTGATCGCGGACTCACATCCATGGCTCCTCCAGAA
 AGCGTGATATCGCTCGGGGACGTGAGAGCTCTGATTGCGGGGACCGTGGCCTGCTTCATGACAGCCTG
 CATCGCAGGCATACTCTCCAGCACTCTGTGGACATCAACTGCCATCACGTTTTAGAGAATGCCTCAAC
 TCCACTTTCCCTGGAAACACAACCAAGGTGATAGCTTGTGCAAAGTCTGTTGAGCAGCACTGTTGCCA
 AGGGTCTGGTGAAGTCACTCCAGGAGGAAACACAGTCTGTATTCTTTGAAGGGCTGCTGCACATTGTT
 GAATCCATCGACCTTAACTGCAATGGGATCTCTAATACATTT

ACGCGTACGCGGCCGCTCGAGCAGAACTCATCTCAGAAGAGGATCTGGCAGCAATGATATCCTGGATT
 ACAAGGATGACGACGATAAGGTTTAA

Protein Sequence: >RC210847 protein sequence
 Red=Cloning site Green=Tags(s)

MELRSTAAPRAEGYSNVGFQNEENFLENENTSGNNSIRSRVAVQSREHTNTKQDEEQVTVEQDSPRNREHM
 EDDDEEMQKGCLEERRYDTVCGFCRKHKTTLRHIWIGILLAGYLVMVISACVLFHRLPLFVITVAAIF
 FVVDHLMAKYEHRIDEMLSPGRRLLNSHWFWLKWVIWSSLVLAVIFWLAFTAKLGOQLVDFGGLIMY
 IVLLFLFSKYPTRVYWRPVLWIGLQFLGLLILRTDPGFIAFDWLGRVQTFLEYTDAGASFVGEKYK
 DHFFAFKVLPIVVFSTVMSMLYYLGLMQWIIIRKVGWIMLVTTGSSPIESVVASGNI FVGQTESPLLVRP
 YLPYITKSELHAIMTAGFSTIAGSVLGAYISFGVPSSHLLTASVMSAPASLAAAKLFWPETEKPKITLKN
 AMKMESGDSGNLLEAATQGASSISLVANIAVNLI AFLALLSFMNSALSWFGNMFDPQLSFELICSYIF
 MPFSFMMGVQDSFMVARLIGYKTFNEFVAYEHL SKWIHLRKEGGPKFVNGVQYISIRSEIIATYAL
 CGFANIGSLGIVIGGLTSMAPSRKRDIASGAVRALIAGTVACFMTACIAGILSSTPVDINCHHVLENAFN
 STFPGNTTKVIACCQSLLSSTVAKGPGVEVIPGGNHSLYSLKGCCTLLNPSTFNCNGISNTF

TRTRPLEQKLISEEDLAANDILDYKDDDDKV

Chromatograms: https://cdn.origene.com/chromatograms/mk6139_g12.zip

Restriction Sites: SgfI-MluI

Cloning Scheme:



ACCN: NM_022127

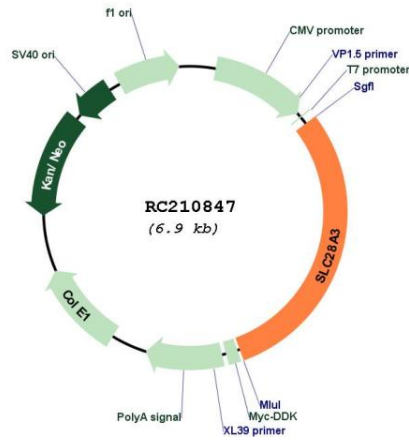
ORF Size: 2073 bp

OTI Disclaimer: The molecular sequence of this clone aligns with the gene accession number as a point of reference only. However, individual transcript sequences of the same gene can differ through naturally occurring variations (e.g. polymorphisms), each with its own valid existence. This clone is substantially in agreement with the reference, but a complete review of all prevailing variants is recommended prior to use. [More info](#)

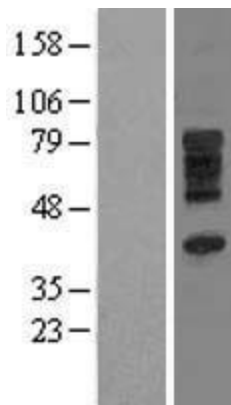
OTI Annotation: This clone was engineered to express the complete ORF with an expression tag. Expression varies depending on the nature of the gene.

Components:	The ORF clone is ion-exchange column purified and shipped in a 2D barcoded Matrix tube containing 10ug of transfection-ready, dried plasmid DNA (reconstitute with 100 ul of water).
Reconstitution Method:	<ol style="list-style-type: none">1. Centrifuge at 5,000xg for 5min.2. Carefully open the tube and add 100ul of sterile water to dissolve the DNA.3. Close the tube and incubate for 10 minutes at room temperature.4. Briefly vortex the tube and then do a quick spin (less than 5000xg) to concentrate the liquid at the bottom.5. Store the suspended plasmid at -20°C. The DNA is stable for at least one year from date of shipping when stored at -20°C.
Note:	Plasmids are not sterile. For experiments where strict sterility is required, filtration with 0.22um filter is required.
RefSeq:	<u>NM_022127.3</u>
RefSeq Size:	4573 bp
RefSeq ORF:	2076 bp
Locus ID:	64078
UniProt ID:	<u>Q9HAS3</u>
Cytogenetics:	9q21.32-q21.33
Domains:	Nucleoside_tra2
Protein Families:	Transmembrane
MW:	76.9 kDa
Gene Summary:	Nucleoside transporters, such as SLC28A3, regulate multiple cellular processes, including neurotransmission, vascular tone, adenosine concentration in the vicinity of cell surface receptors, and transport and metabolism of nucleoside drugs. SLC28A3 shows broad specificity for pyrimidine and purine nucleosides (Ritzel et al., 2001 [PubMed 11032837]). [supplied by OMIM, Mar 2008]

Product images:



Circular map for RC210847



Western blot validation of overexpression lysate (Cat# [LY402908]) using anti-DDK antibody (Cat# [TA50011-100]). Left: Cell lysates from untransfected HEK293T cells; Right: Cell lysates from HEK293T cells transfected with RC210847 using transfection reagent MegaTran 2.0 (Cat# [TT210002]).