

Product datasheet for RC210844

PCDH18 (NM_019035) Human Tagged ORF Clone

Product data:

Product Type:	Expression Plasmids
Product Name:	PCDH18 (NM_019035) Human Tagged ORF Clone
Tag:	Myc-DDK
Symbol:	PCDH18
Synonyms:	PCDH68L
Mammalian Cell Selection:	Neomycin
Vector:	pCMV6-Entry (PS100001)
E. coli Selection:	Kanamycin (25 ug/mL)
ORF Nucleotide Sequence:	>RC210844 ORF sequence Red=Cloning site Blue=ORF Green=Tags(s)

TTTTGTAATACGACTCACTATAGGGCGGCCGGAATTCGTCGACTGGATCCGGTACCGAGGAGATCTGCC
GCCCGCATCGCC

ATGCACCAATGAATGCTAAAATGCACTTTAGGTTTGTTCCTTCTGATAGTATCTTTCAACCAG
ATGTACTGGCAAGAATTTGAAATACAGGATTTATGAGGAACAGAGGGTTGGATCAGTAATTGCAAGACT
ATCAGAGGATGTGGCTGATGTTTTATTGAAGCTTCTTAATCCTTCTACTGTTTCGATTTTCGAGCCATGCAG
AGGGGAAATTCCTCTACTTGTAGTAAACGAGGATAATGGGAAATCAGCATAGGGGCTACAATTGACC
GTGAACAACGTGCCAGAAAACCTGAACTGTTCCATAGAGTTTGATGTGATCACTCTACCCACAGAGCA
TCTGCAGCTTTTCCATATTGAAGTTGAAGTGCTGGATATTAATGACAATTCCTCCCGAGTTTCAAGATCT
CTCATACCTATTGAGATATCTGAGAGTGCAGCAGTTGGGACTCGCATTCCCTGGACAGTGCATTTGATC
CAGATGTTGGGAAAATTCCTCCACACATACTCGCTCTCGCCAATGATTTTTTAAATATCGAGGTTTCG
GACCAGGACTGATGGAGCCAAGTATGCAGAACCATAGTGGTCAGAGAGTTAGATCGGGAGCTGAAGTCA
AGCTACGAGCTTCAGCTCACTGCCTCAGACATGGGAGTACCTCAGAGGCTGGCTCATCCATACTAAAA
TAAGCATTTGAGACTCCAATGACAACAGCCCTGCTTTTGAGCAGCAATCTTATAATAACAACCTTTAGA
AACTCCCGGTTGGCACTTTGCTCTTAGATCTGAATGCCACGGATCCAGATGAGGGCGCTAATGGGAAA
ATTGATATTTCTTCAGCAGTCACTGTGCTCCAAAATTATGGAGACTTTTAAATTTGATTTCTGAAAGAG
GACATTTGACTCTTTCAAGCAAGTGGATTATGAAATCACCAAAATCCTATGAGATTGATGTTTCAGGCTCA
AGATTTGGGTCCAAATCAATCCAGCCCATTTGCAAAAATTATAATTAAGTTGTGGATGTTAATGACAAT
AAACCTGAAATTAACATCAACCTCATGTCCCTGGAAAAGAAGAAATATCTTATATTTTTGAAGGGGATC
CTATTGATACATTTGTTGCTTTGGTCAGAGTTCAGGACAAGGATTCGGGCTGAATGGAGAAATAGTTTG
TAAGCTTCATGGACATGGTCACTTTAACTTCAGAAGACATATGAAAACAATTATTTAATCTTAACTAAT
GCCACACTGGATAGAGAAAAGAGATCTGAGTATAGTTTGACTGTAATCGCTGAGGACAGGGGGACACCCA
GTCTCTACAGTAAACATTTTACAGTTCAAATCAATGATATCAATGACAATCCACCCCACTTCCAGAG
AAGCCGATATGAATTTGTAATTTAGAAAATAACTCACCAGGGGCATATATCACCCTGTTACAGCCACA



[View online »](#)

GATCCTGATCTTGGAGAAAATGGGCAAGTGACATACACCATCTTGGAGAGTTTTATTCTAGGAAGTTCCA
TAACTACATATGTAACCATTTGACCCATCTAATGGAGCCATCTATGCCCTCAGAATCTTTGATCATGAAGA
AGTGAGTCAGATCACTTTTGTGGTAGAAGCAAGAGATGGAGGAAGCCGAAGCAACTGGTAAGCAATACC
ACAGTTGTGCTCACCATCATTGACGAAAATGACAACGTTCTGTGGTTATAGGGCCTGCATTGCGTAATA
ATACGGCAGAAAATCACCATTCCCAAAGGGGCTGAAAGTGGCTTTCATGTCACAAGAATAAGGGCAATTGA
CAGAGACTCTGGTGTGAATGCTGAACTCAGCTGCGCCATAGTAGCAGGTAATGAGGAGAATATCTTCATA
ATTGATCCAGATCATGTGACATCCATACCAACGTTAGCATGGATTCTGTTCCCTACACAGAATGGGAGC
TGTGAGTTATCATTGAGGACAAAGGCAATCCTCAGCTACATACCAAAGTCCTTCTGAAAGTCATGATCCTT
TGAATATGCAGAGTCGGTGACAAGTACAGCAATGACTTCAGTAAGCCAGGCATCCTTGGATGTCTCCATG
ATAATAATTATTTCTTAGGAGCAATTTGTGAGTGTGCTGGTTATTATGGTGTATTTGCAACTAGGT
GTAACCGCAGAGAAGAAAGACTAGATCTATAACTGCAGGGTGGCCGAATCAACTACCAGCACCACCC
AAAAAGGCCATCCCGCAGATTCACAAAGGGGACATCACATTGGTGCCTACCATAAATGGCACTCTGCC
ATCAGATCTCATCAGATCGTCTCCATCTTCATCTCCTACCTTAGAAAGAGGGCAGATGGGCAGCCGGC
AGAGTCACAACAGTCACCAGTCACTCAACAGTTTGGTGACAATCTCATCAAACCAGTGCCAGAGAATTT
CTCATTAGAACTACCCACGCCACTCCTGCTGTTGAGCAGGTCTCTCAGCTTCTTTCAATGCTTCACCAG
GGCAATATCAGCCAAGCAAGTTTTTCGAGGAAACAAATATTCCAGGAGCTACAGATATGCCCTTCAAG
ACATGGACAAATTTAGCTTAAAAGACAGTGGCCGTGGTGACAGTGAGGCAGGAGACAGTGATTATGATTT
GGGGCAGATTCTCCAATAGATAGGCTGCTGGGTGAAGGATTCAGCGACCTGTTTCTCACAGATGGAAGA
ATTCCAGCAGCTATGAGACTCTGCACGGAGGAGTGACAGGTCCTGGGACACTCTGACCAGTGCTGGATGC
CACCCTGCCCTCACCCTCTTCTGATTATAGGAGTAACATGTTTCATTCCAGGGGAAGAATCCCAACGCA
ACCCAGCAGCAGCATCCACATCAGAGTCTTGAGGATGACGCTCAGCCTGCAGATTCGGTGAAGAAG
AAGAGTTTTTCCACCTTTGGAAAGGACTCCCAAACGATGAGGACACTGGGGATACCAGCACATCATCTC
TGCTCTCGAAAATGAGCAGTGTGTTCCAGCGTCTTTACCGCCTTCCCTGGACACCTATTCTGAATGCAG
TGAGGTGGATCGGTCCAACCTCCCTGGAGCGCAGGAAGGGACCCTTGCCAGCCAAAACACTGTGGTTACCCA
CAGGGGTAGCGCATGGCAGCCAGTACGCATTTTCAAATCCCAACCAACTGTGGGCCGCCACTTG
GAACTCACTCCAGTGTGACGCTTCTTCAAATGGCTGCCAGCCATGGAGGAGATCCCTGAAAATTATGA
GGAAGATGATTTTGACAATGTGCTCAACCACCTCAATGATGGGAAACACGAACTCATGGATGCCAGTGAA
CTGGTGGCAGAGATTAACAAACTGCTTCAAGATGTCCGCCAGAGC

ACGGTACGCGGCCGCTCGAGCAGAACTCATCTCAGAAGAGGATCTGGCAGCAATGATATCCTGGATT
ACAAGGATGACGACGATAAGGTTTAA

Protein Sequence: >RC210844 protein sequence
 Red=Cloning site Green=Tags(s)

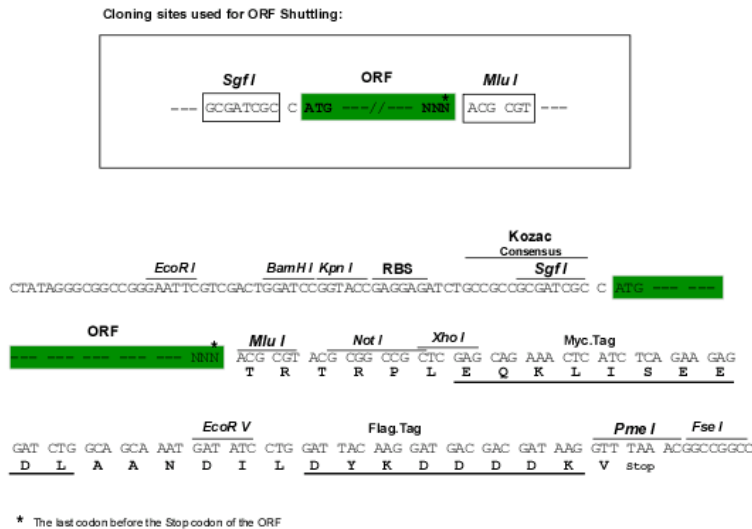
MHQMNAKMHRFV FALLIVSFNHDV LGK NLKYRIYEEQRVGSVIARL SEDVADVLLKLPNPSTVRFAMQ
 RGN SPLL VV NEDNGE ISIGATIDREQLCQKNLNC SIEFDVITLPTEHLQLFHIEVEVLDINDNSPQFSRS
 LIPIEISEAAVGT R IPLDSAFDPDVG ENSLHTYSL SANDFFNIEVRTRTDGAKY AELIVVRELDRELKS
 SYELQLTASDMGVPQRSGSSILKISISDSNDNSPAFEQQSYIIQLLENSPVGTLLLDLNATDPDEGANGK
 IVYSFSSHVSPKIMETFKIDSERGHLTLFKQVDYEITKSYEIDVQAQDLGPNSIPAHCKII IKVVDVNDN
 KPEININLMSPGKEEISYIFEGDPIDTFVALVRVQDKD SGLNGEIVCKLHG HGHFKLQKTYENNYLILT N
 ATLDREKRSEYSLTVIAEDRGT PSLSTVKHFTVQINDINDNPPHFQRSRYEFVISENNSPGAYITTVTAT
 DPDLGENGQVTTYILESFILGSSITTYVTIDPSNGAIYALRIFDHEEVSQITFVVEARDGGSPKQLVSNT
 TVVLTIIDENDNVPV VIGPALRNNTAEITIPKGAESGFHVTRIRAI DRDSGVNAELSCAIVAGNEENIFI
 IDPRSCDIHTNVSMD SVPYTEWELSVIIQDKGNPQLHTKVL LKCMIFEYAESVTSTAMT SVSQASLDVSM
 IIIISLGAICAVLLVIMVLFATRCNREKKDTRS YNCRVAESTYQHHPKRPSRQIHKGDITLVPTINGTLP
 IRSHHRSSPSSSPTLERGQMGSRQSHNSHQSLNSLVTISSNHVPENF SLELTHATPAVEQVSQLLSMLHQ
 GQYQPRPSFRGNKYSRSYRYALQMDKFS LKDSGRGDSEAGDS DYDLGRDSPIDRLLGEGFSDLFLTDGR
 IPAAMRLCTEECVLGHSDQCWMPPLPSPSSDYRSNMFIPGEEFPTQPQQHPHQ SLEDDAQPADS GEKK
 KSFSTFGKDSPNDEDTGDTSTSSLLSEMSSVFQRL LPPSLD TYSECSEVDRSNSLERRKGPLPAKT VGY P
 QGVAWAASTHFQNP TTNCGPPLGTHSSVQPSSKWL PAMEEIPENYEEDDFDNV LNLNDGKHELM DASE
 LVAEINKLLQDVRQS

TRTRPLEQKLISEEDLAANDILDYKDDDDKV

Chromatograms: https://cdn.origene.com/chromatograms/mk6762_d10.zip

Restriction Sites: SgfI-MluI

Cloning Scheme:



ACCN: NM_019035

ORF Size: 3405 bp

OTI Disclaimer: Due to the inherent nature of this plasmid, standard methods to replicate additional amounts of DNA in E. coli are highly likely to result in mutations and/or rearrangements. Therefore, OriGene does not guarantee the capability to replicate this plasmid DNA. Additional amounts of DNA can be purchased from OriGene with batch-specific, full-sequence verification at a reduced cost. Please contact our customer care team at custsupport@origene.com or by calling 301.340.3188 option 3 for pricing and delivery.

The molecular sequence of this clone aligns with the gene accession number as a point of reference only. However, individual transcript sequences of the same gene can differ through naturally occurring variations (e.g. polymorphisms), each with its own valid existence. This clone is substantially in agreement with the reference, but a complete review of all prevailing variants is recommended prior to use. [More info](#)

OTI Annotation: This clone was engineered to express the complete ORF with an expression tag. Expression varies depending on the nature of the gene.

Components: The ORF clone is ion-exchange column purified and shipped in a 2D barcoded Matrix tube containing 10ug of transfection-ready, dried plasmid DNA (reconstitute with 100 ul of water).

Reconstitution Method:

1. Centrifuge at 5,000xg for 5min.
2. Carefully open the tube and add 100ul of sterile water to dissolve the DNA.
3. Close the tube and incubate for 10 minutes at room temperature.
4. Briefly vortex the tube and then do a quick spin (less than 5000xg) to concentrate the liquid at the bottom.
5. Store the suspended plasmid at -20°C. The DNA is stable for at least one year from date of shipping when stored at -20°C.

RefSeq: [NM_019035.5](#)

RefSeq Size: 5941 bp

RefSeq ORF: 3408 bp

Locus ID: 54510

UniProt ID: [Q9HCL0](#)

Cytogenetics: 4q28.3

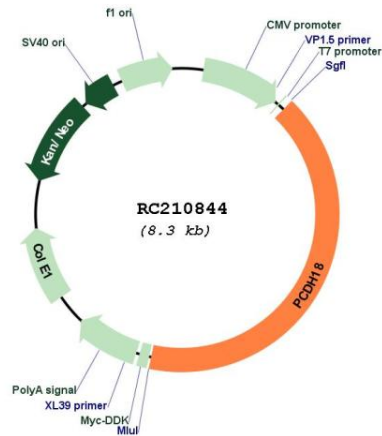
Domains: CA

Protein Families: Druggable Genome, Transmembrane

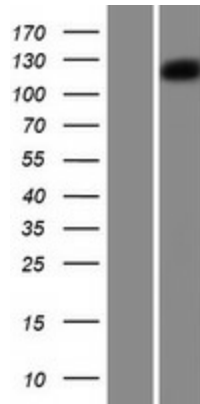
MW: 126.1 kDa

Gene Summary: This gene belongs to the protocadherin gene family, a subfamily of the cadherin superfamily. This gene encodes a protein which contains 6 extracellular cadherin domains, a transmembrane domain and a cytoplasmic tail differing from those of the classical cadherins. Although its specific function is undetermined, the cadherin-related neuronal receptor is thought to play a role in the establishment and function of specific cell-cell connections in the brain. [provided by RefSeq, Jul 2008]

Product images:



Circular map for RC210844



Western blot validation of overexpression lysate (Cat# [LY412803]) using anti-DDK antibody (Cat# [TA50011-100]). Left: Cell lysates from untransfected HEK293T cells; Right: Cell lysates from HEK293T cells transfected with RC210844 using transfection reagent MegaTran 2.0 (Cat# [TT210002]).