

## Product datasheet for **RC210834**

### ADAMTS5 (NM\_007038) Human Tagged ORF Clone

#### Product data:

Product Type:	Expression Plasmids
Product Name:	ADAMTS5 (NM_007038) Human Tagged ORF Clone
Tag:	Myc-DDK
Symbol:	ADAMTS5
Synonyms:	ADAM-TS 5; ADAM-TS5; ADAM-TS 11; ADAMTS-5; ADAMTS-11; ADAMTS11; ADMP-2
Mammalian Cell Selection:	Neomycin
Vector:	pCMV6-Entry (PS100001)
E. coli Selection:	Kanamycin (25 ug/mL)



[View online »](#)

**ORF Nucleotide Sequence:**

>RC210834 representing NM\_007038.  
 Blue=ORF Red=Cloning site Green=Tag(s)

```

GCTCGTTTAGTGAACCGTCAGAATTTTGTAAACGACTCACTATAGGGCGGCCGGGAATTCGTGACTG
GATCCGGTACCGAGGAGATCTGCCGCCCGGATCGCC
ATGCTGCTCGGGTGGGCGTCCCTGCTGCTGTGCGGTTCCGCCTGCCCTGGCCGCGGTGCGCCCCGCC
GCGACACCTGCCAGGATAAAGCCGGGCAGCCTCCGACTGCTGCAGCAGCCGCCAGCCCCGCCGCGG
CAGGGGGAGGAGGTGCAGGAGCGAGCCGAGCCTCCCGGCCACCCCGACCCCTGGCGCAGCGGCGCAGG
AGCAAGGGGCTGGTGCAGAACATCGACCAACTCTACTCCGGCGGCGGCAAGGTGGGTACCTCGTCTAC
GCGGGCGGCCGGAGTTCTCTTGACCTGGAGCGAGATGGTTCGGTGGGATTGCTGGCTTCGTGCC
GCAGGAGCGGGACGAGTGCGCCCTGGCGCCACCGGAGCCACTGCTTCTATCGGGGCACAGTGGACGCT
AGTCCCCGCTCTCTGGCTGTCTTTGACCTCTGTGGGGTCTCGACGGCTTCTTCGCGGTCAAGCACGCG
CGCTACACCCTAAAGCCACTGCTGCGCGGACCCTGGGCGGAGGAAGAAAAGGGGCGCGTGTACGGGGAT
GGGTCCGCACGGATCCTGCAGTCTACACCCGCGAGGGCTTCAGCTTCGAGGCCCTGCCCGCGCGGCC
AGCTGCGAAACCCCGCTCCACACCGGAGGCCACGAGCATGCTCCGGCGCACAGCAACCCGAGCGGA
CGCGCAGCACTGGCCTCGCAGCTTTGGACCAGTCCGCTCTCTCGCCCGCTGGGGGCTCAGGACCCAG
ACGTGGTGGCGGCGGCGCGCCGCTCCATCTCCCGGGCCCGCCAGGTGGAGCTGCTTCTGGTGGCTGAC
GCGTCCATGGCGCGTTGTATGGCCGGGCGCTGCAGCATTACCTGCTGACCTGGCTCCATCGCCAAT
AGGCTGTACAGCCATGCTAGCATCGAGAACCACATCCGCTGGCCGTGGTGAAGTGGTGGTGTAGGC
GACAAGGACAAGAGCCTGGAAGTGAAGCAAGAAGCTGCCACCACACTCAAGAACCTTTGCAAGTGGCAG
CACCAACAACAACAGCTGGGAGATGACCATGAGGAGCACTACGATGCAGCTATCCTGTTTACTCGGGAG
GATTTATGTGGGCATCATTATGTGACACCCTGGGAATGGCAGACGTTGGGACCATATGTTCTCAGAG
CGCAGCTGTGCTGTGATTGAAGACGATGGCTCCACGACGCTTCACTGTGGCTCACGAAATCGGACAT
TTACTTGGCCTCTCCATGACGATTCCAATTTCTGTGAAGAGACCTTTGGTTCCACAGAAGATAAGCGC
TTAATGTCTTCCATCCTTACCAGCATTGATGCATCTAAGCCCTGGTCCAATGCATTACGCCACCATC
ACAGAATTCCTGGATGATGGCCATGGTAACTGTTTGTGGACCTACCACGAAAGCAGATCCTGGGCCCC
GAAGAATCCCAGGACAGACCTACGATGCCACCCAGCAGTGAACCTGACATTCGGGCTGAGTACTCC
GTGTGTCCCGCATGGATGTCTGTGCTCGCCTGTGGTGTGCTGTGGTACGCCAGGGCCAGATGGTCTGT
CTGACCAAGAAGCTGCCTGCGGTGGAAGGGACGCCTTGTGAAAGGGGAGAATCTGCCTGCAGGGCAAA
TGTGTGGACAAAACCAAGAAAAAATATTATTCAACGTCAAGCCATGGCAACTGGGATCTTGGGGATCC
TGGGGCCAGTGTCTCGCTCATGTGGAGGAGGAGTGCAGTTTGCCTATCGTCACTGTAATAACCCTGCT
CCAGAAAACAACGACGCTACTGCACAGGGAAGAGGGCCATCTACCGCTCCTGCAGTCTCATGCCCTGC
CCACCAATGGTAAATCATTTCGTGATGAACAGTGTGAGGCCAAAAATGGCTATCAGTCTGATGAAAA
GGAGTCAAAACTTTTGTGGAATGGGTTCCCAAATATGCAGGTGCTCCTGCCAGCGGATGTGTGCAAGCTG
ACCTGCAGAGCCAAGGGCACTGGCTACTATGTGGTATTTTCTCCAAGGTGACCGATGGCACTGAATGT
AGGCCGTACAGTAATCCGCTCTGCGTCCGGGGAAAGTGTGTGAGAAGTGGCTGTGACGGCATATTGGC
TCAAAGCTGCAGTATGACAAGTGCAGATGTGGAGGAGACAACCTCCAGCTGTACAAAGATTGTTGGA
ACCTTTAATAAGAAAAGTAAGGGTTACTGACGTGGTGGATTCTTGAAGGGCAACCCACATAAAA
GTTTCGACAGTTCAAAGCCAAAGACCAGACTAGATTCACTGCCTATTTAGCCCTGAAAAAGAAAAACGGT
GAGTACCTTATCAATGGAAAGTACATGATCTCCACTTCAGAGACTATCATTGACATCAATGGAACAGTC
ATGAACTATAGCGTTGGAGCCACAGGGATGACTTCTGCATGGCATGGGCTACTCTGCCACGAAGGAA
ATTCTAATAGTGCAGATTCTTGCAACAGACCCCACTAAACCATTAGATGTCGGTTATAGCTTTTTTGT
CCCAAGAAGTCCACTCCAAAAGTAAACTCTGTCACTAGTCAATGGCAGCAATAAAGTGGGATCACACACT
TCGCAGCCGAGTGGGTACGGGCCATGGCTCGCCTGCTCTAGGACCTGTGACACAGGTTGGCACACC
AGAACGGTGCAGTCCAGGATGGAACCGGAAGTTAGCAAAGGATGCTCTCTCCAAAGGCCTTCT
CGGTTAAGCAATGCTTGTGAAGAAATG
AGCGGACCGACGCGTACGCGGCCGCTCGAGCAGAACTCATCTCAGAAGAGGATCGGCAGCAAATGAT
ATCCTGGATTACAAGGATGACGACGATAAGGTTTAA
  
```

**Protein Sequence:** >Peptide sequence encoded by RC210834  
 Blue=ORF Red=Cloning site Green=Tag(s)

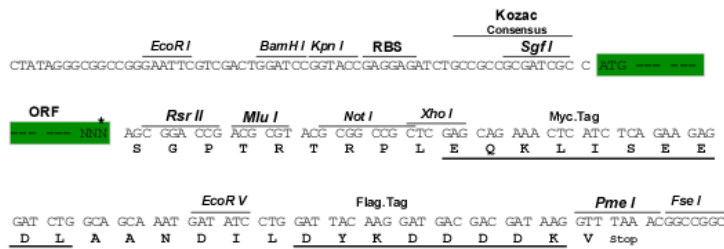
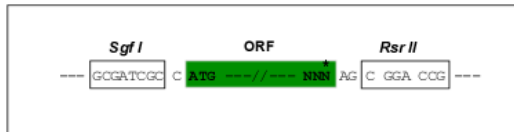
MLLGWASLLLCAFRLPLAAVGPAAQPAQDKAGQPPTAAAAAQRPRRQGEVQERAEPGHPHPLAQRRR  
 SKGLVQNIQQLYSGGKVGYL VYAGRRFLDLERDGSVGIAGFVPAGGGTSAPWRHRSHCFYRGTVDA  
 SPRSLAVFDLCGLDGF FAVKHARYTLKPLLRGPWAEEEKGRVYGDGSARILHVYTREGFSFEALPPRA  
 SCETPASTPEAHEHAPAHSNPNSGRAALASQLLDQSALSPAGGSGPQTWRRRRRSISRARQVELLLVAD  
 ASMARLYGRGLQHYLLTLASIANRLYSHASIEHRLAVVKKVVLGDKDKSLEVSKNAATLKNFCKWQ  
 HQHNQLGDDHEEHYDAAILFTREDLCGHSCDTLGMADVGTICSPERSCAVIEDGLHAAFTVAHEIGH  
 LLGLSHDDSKFCEETFGSTEDKRLMSSILTSIDASKPWSKCTSATITEFLDDGHGNCLLDLPRKQILGP  
 EELPGQTYDATQQCNLTFGPEYSVCPGMDVCARLWCAVVRQGMVCLTKKLPAVEGTPCGKGRICLQGK  
 CVDKTKKKYYSTSSHGNWGSWGSWGQCSRSCGGGVQFAYRHCNPNAPRNNGRYCTGKRAIYRCSLMPC  
 PPNKGSFRHEQCEAKNGYQSDAKGVKTFVEWPKYAGVLPADVCKLTCRAKGTGYVVVSPKVTDTGTEC  
 RPYNSVSVRGKCVRTGCDGIIGSKLQYDKCGVCGDSSCTKI VGT FNKKSKGYTDVVRIPGATHIK  
 VRQFKAKDQTRFTAYLALKKKNGEYLINGKYMISTSETIIDINGTMNYSWGSRRDFFLHGMYSATKE  
 ILIVQILATDPTKPLDVRYSFFVPKKSTPKVNSVTSHGSKNVGSHTSQPQWVTGPWLACSRCTDGTWHT  
 RTVQCQDGNRKLAKGCPLSQRPFAFKQCLLKKC  
 SGPTRTRPLEQKLI SEEDLAANDILDYKDDDDKV

**Chromatograms:** [https://cdn.origene.com/chromatograms/mk6185\\_a09.zip](https://cdn.origene.com/chromatograms/mk6185_a09.zip)

**Restriction Sites:** SgfI-RsrII

**Cloning Scheme:**

Cloning sites used for ORF Shuttling:

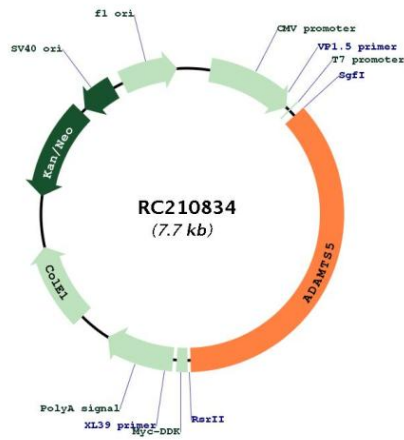


\* The last codon before the Stop codon of the ORF

**ACCN:** NM\_007038

<b>ORF Size:</b>	2790 bp
<b>OTI Disclaimer:</b>	The molecular sequence of this clone aligns with the gene accession number as a point of reference only. However, individual transcript sequences of the same gene can differ through naturally occurring variations (e.g. polymorphisms), each with its own valid existence. This clone is substantially in agreement with the reference, but a complete review of all prevailing variants is recommended prior to use. <a href="#">More info</a>
<b>OTI Annotation:</b>	This clone was engineered to express the complete ORF with an expression tag. Expression varies depending on the nature of the gene.
<b>Components:</b>	The ORF clone is ion-exchange column purified and shipped in a 2D barcoded Matrix tube containing 10ug of transfection-ready, dried plasmid DNA (reconstitute with 100 ul of water).
<b>Reconstitution Method:</b>	<ol style="list-style-type: none"><li>1. Centrifuge at 5,000xg for 5min.</li><li>2. Carefully open the tube and add 100ul of sterile water to dissolve the DNA.</li><li>3. Close the tube and incubate for 10 minutes at room temperature.</li><li>4. Briefly vortex the tube and then do a quick spin (less than 5000xg) to concentrate the liquid at the bottom.</li><li>5. Store the suspended plasmid at -20°C. The DNA is stable for at least one year from date of shipping when stored at -20°C.</li></ol>
<b>RefSeq:</b>	<a href="#">NM_007038.2</a> , <a href="#">NP_008969.1</a>
<b>RefSeq Size:</b>	9663 bp
<b>RefSeq ORF:</b>	2793 bp
<b>Locus ID:</b>	11096
<b>UniProt ID:</b>	<a href="#">Q9UNAO</a>
<b>Cytogenetics:</b>	21q21.3
<b>Domains:</b>	tsp_1, Reprolysin, ACR
<b>Protein Families:</b>	Druggable Genome, Protease, Secreted Protein
<b>MW:</b>	101.7 kDa
<b>Gene Summary:</b>	This gene encodes a member of the ADAMTS (a disintegrin and metalloproteinase with thrombospondin motifs) protein family. Members of the family share several distinct protein modules, including a propeptide region, a metalloproteinase domain, a disintegrin-like domain, and a thrombospondin type 1 (TS) motif. Individual members of this family differ in the number of C-terminal TS motifs, and some have unique C-terminal domains. The encoded preproprotein is proteolytically processed to generate the mature enzyme. This enzyme contains two C-terminal TS motifs and functions as an aggrecanase that cleaves aggrecan, a major proteoglycan of cartilage, and may mediate cartilage destruction in osteoarthritis. [provided by RefSeq, Feb 2016]

Product images:



Circular map for RC210834