

Product datasheet for RC210829L1

MSL2L1 (MSL2) (NM_018133) Human Tagged Lenti ORF Clone

Product data:

Product Type:	Expression Plasmids
Product Name:	MSL2L1 (MSL2) (NM_018133) Human Tagged Lenti ORF Clone
Tag:	Myc-DDK
Symbol:	MSL2L1
Synonyms:	MSL-2; MSL2L1; RNF184
Mammalian Cell Selection:	None
Vector:	pLenti-C-Myc-DDK (PS100064)
E. coli Selection:	Chloramphenicol (34 ug/mL)
ORF Nucleotide Sequence:	The ORF insert of this clone is exactly the same as(RC210829).
Restriction Sites:	SgfI-MluI
Cloning Scheme:	

Cloning sites used for ORF Shuttling:



* The last codon before the Stop codon of the ORF.

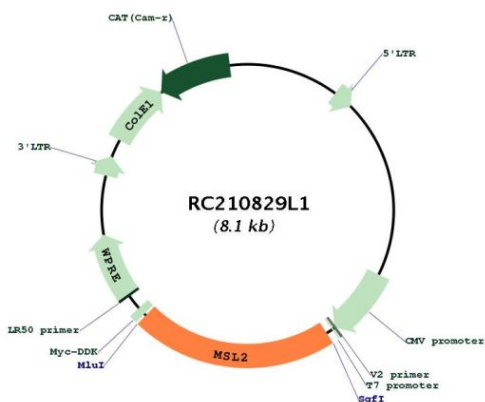
ACCN:	NM_018133
ORF Size:	1731 bp



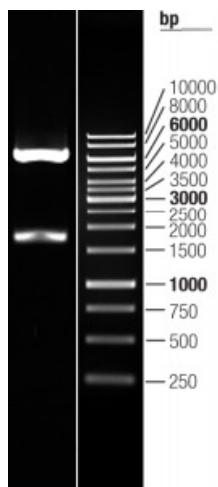
[View online »](#)

OTI Disclaimer:	The molecular sequence of this clone aligns with the gene accession number as a point of reference only. However, individual transcript sequences of the same gene can differ through naturally occurring variations (e.g. polymorphisms), each with its own valid existence. This clone is substantially in agreement with the reference, but a complete review of all prevailing variants is recommended prior to use. More info
OTI Annotation:	This clone was engineered to express the complete ORF with an expression tag. Expression varies depending on the nature of the gene.
Components:	The ORF clone is ion-exchange column purified and shipped in a 2D barcoded Matrix tube containing 10ug of transfection-ready, dried plasmid DNA (reconstitute with 100 ul of water).
Reconstitution Method:	<ol style="list-style-type: none">1. Centrifuge at 5,000xg for 5min.2. Carefully open the tube and add 100ul of sterile water to dissolve the DNA.3. Close the tube and incubate for 10 minutes at room temperature.4. Briefly vortex the tube and then do a quick spin (less than 5000xg) to concentrate the liquid at the bottom.5. Store the suspended plasmid at -20°C. The DNA is stable for at least one year from date of shipping when stored at -20°C.
RefSeq:	NM_018133.2
RefSeq Size:	4696 bp
RefSeq ORF:	1734 bp
Locus ID:	55167
UniProt ID:	Q9HCI7
Cytogenetics:	3q22.3
Protein Families:	Druggable Genome
MW:	62.5 kDa
Gene Summary:	Component of histone acetyltransferase complex responsible for the majority of histone H4 acetylation at lysine 16 which is implicated in the formation of higher-order chromatin structure. Acts as an E3 ubiquitin ligase that promotes monoubiquitination of histone H2B at 'Lys-35' (H2BK34Ub), but not that of H2A. This activity is greatly enhanced by heterodimerization with MSL1. H2B ubiquitination in turn stimulates histone H3 methylation at 'Lys-4' (H3K4me) and 'Lys-79' (H3K79me) and leads to gene activation, including that of HOXA9 and MEIS1.[UniProtKB/Swiss-Prot Function]

Product images:



Circular map for RC210829L1



Double digestion of RC210829L1 using SgfI-MluI