

Product datasheet for **RC210829**

MSL2L1 (MSL2) (NM_018133) Human Tagged ORF Clone

Product data:

Product Type:	Expression Plasmids
Product Name:	MSL2L1 (MSL2) (NM_018133) Human Tagged ORF Clone
Tag:	Myc-DDK
Symbol:	MSL2L1
Synonyms:	MSL-2; MSL2L1; RNF184
Mammalian Cell Selection:	Neomycin
Vector:	pCMV6-Entry (PS100001)
E. coli Selection:	Kanamycin (25 ug/mL)



[View online »](#)

ORF Nucleotide Sequence:

>RC210829 ORF sequence
 Red=Cloning site Blue=ORF Green=Tags(s)

TTTTGTAATACGACTCACTATAGGGCGGCCGGAATTCGTCGACTGGATCCGGTACCGAGGAGATCTGCC
 GCC**GCGATCGCC**

ATGAACCCCGTGAATGCTACTGCTCTACATTTCCGCGAGCCGCTAGTGCTCAACTACGACCCCGGAG
 ACCCAAGGCGTTTACTGAGATTAACAGGCTCTTGCCTTACTTCCGACAGTCCCTTCGTGCTGTGTTG
 CGGACATTTGCTACAAGATCCTATTGCACCCACCAACTCCACCTGCCAACATTATGTCTGCAAACTTGT
 AAAGGCAAGAAAAATGATGATGAAACCTTCTGTAGCTGGTCAAAGACTATGAGCAGTTTGGAGAAAAACA
 AGCAGTTAAGCATCCTAGTGAAGTCTACAAAAAACTATGCGAGTATAAACACAGACTACACTGGCAGC
 GGATATAATAGAAGCAGTTGACTGTTCTTCTGATATTTTGGCTTTGCTTAATGATGGATCATTGTTTTGT
 GAGGAGACAGAAAAACCCTCAGATTCATCCTTTACTTTGTGTTGACACATTCCTTTACCTTCAACCT
 CAGAACCACAAGTATCCTCAAGCTAGTTTATCTCCAATGTCTGAAAGCACCTCAGCATTGCTATTGG
 CAGTTCTGTTATCAATGGTTTGCCTACTTATAATGGGCTTCAATAGATAGATTTGGTATAAATATTCCT
 TCACCTGAACATTCAAATACGATTGACGTATGTAATACTGTTGACATAAAAACTGAGGATCTGTCTGACA
 GCCTGCCACCCGTTTGTGACACAGTAGCCACTGACTTATGTTCCACAGGCATTGATATCTGCAGTTTCAG
 TGAAGATATAAACTGGAGACTCTCTGTTACTGAGTGTGAGGAAGTACTCCGCAGCTTAGAACTGTT
 TCAAATACAGAGGCTGTTGCCCTAATTTGCAGCCGAAGTTGGAAGCCACTGTATCCAATGGACCTTTTC
 TGCAGCTTTCTCCAGTCTCTTAGCCATAATGTTTTATGTCCACCAGTCTGCCTTCATGGGTTATC
 ATGTACAGCAGCAACTCCGAAGTAGCAAAATGAATAGAAAACGATCCAGATCAGAGAGTGACAGTGAG
 AAAGTTCAGCCACTTCCAATTTCTACCATTATCCGAGGCCAACACTGGGGGCATCTGCTCTGTGACAG
 TGAACCGGGAGAGCAAAATTTCTCTTCAACCTATAGCAACTGTTCCCAATGGAGGCACAACCTAAAAT
 CAGCAAAACTGTACTTTTATCTACTAAAAGCATGAAAAAGAGTCATGAACATGGATCCAAGAAATCTCAC
 TCTAAAACCAAGCCAGGTATTCTTAAAAAGACAAAGCAGTAAAGGAAAAGATTCTAGTCATCATTTTA
 TGCCAGGAAGTCTACCAAGACTGTGTACAAAAAACCCAGGAAAAGAAAGGGTGTAAATGTGGCGTGC
 TACTCAAATCCAAGTGTCTTACATGCCGAGGCCAACGCTGCCCTTGCTACTCTAACCGCAAAGCTGC
 TTAGATTGTATATGTCGTGGCTGCCAAACTCCTATATGGCCAATGGGGAGAAGAAGCTGGAGGCATTTG
 CCGTGCCAGAAAAGGCCTTGGAGCAGACCAGGCTCACTTGGGCATTACGTGACTAGCATTGCTGTGCC
 TAACGCTAGTACCAGCACCAGTGAATAAATGTCACAGGGTCCCCAGTAACGACGTTTTTAGCTGCCAGT
 ACACATGATGATAAAAGTTGGATGAAGCTATAGACATGAGATTCGACTGT

ACGCGTACGCGGCCGCTCGAGCAGAAACTCATCTCAGAAGAGGATCTGGCAGCAAATGATATCCTGGATT
 ACAAGGATGACGACGATAAGGTTTAA

Protein Sequence:

>RC210829 protein sequence
 Red=Cloning site Green=Tags(s)

MNPVNATALYISASRLVLYDPGDPKAFTEINRLLPYFRQSLSCCVCGHLLQDPIAPTNSTCQHVVCKTC
 KGKMMMPSCSWCKDYEQFEENKQLSILVNCYKKLCEYITQTLARDIEAVDCSSDILALLNDGSLFC
 EETEKPSDSSFTLCLTHSPLPSTSEPTTDPQASLSPMSESTLSIAIGSSVINGLPTYNGLSIDRFGINIP
 SPEHSNTIDVCNTVDIKTEDLSDSLPPVCDTVATDLCTGIDICSFSEDIKPGDSLILLSVEEVLRSLET
 SNTEVCCPNLQPNLEATVSNPFLQLSSQSLSHNVFMSTSPALHGLSCTAATPKIAKLNKRKRSRSESDSE
 KVQPLPISTIIRGPTLGASAPVTVKRESKISLQPIATVPNGGTPKISKTVLLSTKMKKSHEHGSKSH
 SKTKPGILKKDKAVKEKIPSHHFMPGSPKTVYKPKQEKKGCKGRATQNPVSLTCRGQRCPYCYSNRKAC
 LDCICRGQNSYMANGEKKLEAFVPEKALEQTRLTLGINVTSIAVRNASTSTSVINVTGSPVTTFLAAS
 THDDKSLDEAIDMRFD

TRTRPLEQKLISEEDLAANDILDYKDDDDKV

Chromatograms:

https://cdn.origene.com/chromatograms/mk6584_e09.zip

Restriction Sites:

Sgfl-Mlul

Cloning Scheme:


ACCN: NM_018133

ORF Size: 1731 bp

OTI Disclaimer: The molecular sequence of this clone aligns with the gene accession number as a point of reference only. However, individual transcript sequences of the same gene can differ through naturally occurring variations (e.g. polymorphisms), each with its own valid existence. This clone is substantially in agreement with the reference, but a complete review of all prevailing variants is recommended prior to use. [More info](#)

OTI Annotation: This clone was engineered to express the complete ORF with an expression tag. Expression varies depending on the nature of the gene.

Components: The ORF clone is ion-exchange column purified and shipped in a 2D barcoded Matrix tube containing 10ug of transfection-ready, dried plasmid DNA (reconstitute with 100 ul of water).

Reconstitution Method:

1. Centrifuge at 5,000xg for 5min.
2. Carefully open the tube and add 100ul of sterile water to dissolve the DNA.
3. Close the tube and incubate for 10 minutes at room temperature.
4. Briefly vortex the tube and then do a quick spin (less than 5000xg) to concentrate the liquid at the bottom.
5. Store the suspended plasmid at -20°C. The DNA is stable for at least one year from date of shipping when stored at -20°C.

RefSeq: [NM_018133.4](#)

RefSeq Size: 4696 bp

RefSeq ORF: 1734 bp

Locus ID: 55167

UniProt ID: [Q9HCI7](#)

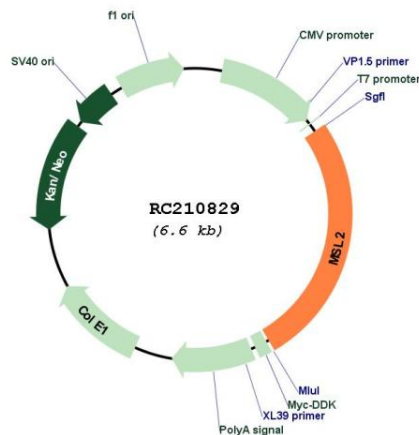
Cytogenetics: 3q22.3

Protein Families: Druggable Genome

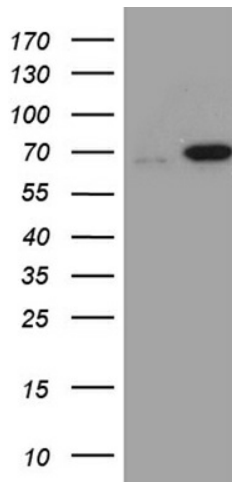
MW: 62.5 kDa

Gene Summary: Component of histone acetyltransferase complex responsible for the majority of histone H4 acetylation at lysine 16 which is implicated in the formation of higher-order chromatin structure. Acts as an E3 ubiquitin ligase that promotes monoubiquitination of histone H2B at 'Lys-35' (H2BK34Ub), but not that of H2A. This activity is greatly enhanced by heterodimerization with MSL1. H2B ubiquitination in turn stimulates histone H3 methylation at 'Lys-4' (H3K4me) and 'Lys-79' (H3K79me) and leads to gene activation, including that of HOXA9 and MEIS1.[UniProtKB/Swiss-Prot Function]

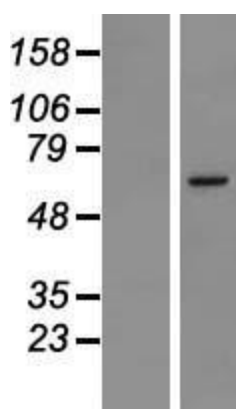
Product images:



Circular map for RC210829



HEK293T cells were transfected with the pCMV6-ENTRY control (Cat# [PS100001], Left lane) or pCMV6-ENTRY MSL2 (Cat# RC210829, Right lane) cDNA for 48 hrs and lysed. Equivalent amounts of cell lysates (5 ug per lane) were separated by SDS-PAGE and immunoblotted with anti-MSL2 (Cat# [TA811181])(1:2000). Positive lysates [LY413286] (100ug) and [LC413286] (20ug) can be purchased separately from OriGene.



Western blot validation of overexpression lysate (Cat# [LY413286]) using anti-DDK antibody (Cat# [TA50011-100]). Left: Cell lysates from untransfected HEK293T cells; Right: Cell lysates from HEK293T cells transfected with RC210829 using transfection reagent MegaTran 2.0 (Cat# [TT210002]).