

Product datasheet for RC210822

C7orf54 (NM_014411) Human Tagged ORF Clone

Product data:

Product Type: Expression Plasmids
Product Name: C7orf54 (NM_014411) Human Tagged ORF Clone
Tag: Myc-DDK
Symbol: C7orf54
Synonyms: brain and nasopharyngeal carcinoma susceptibility protein; chromosome 7 open reading frame 54; MGC138346; NAG8; NAG8, NSG-X, MGC138346; nasopharyngeal carcinoma associated gene protein-8; NSG-X

Mammalian Cell Selection: Neomycin

Vector: pCMV6-Entry (PS100001)

E. coli Selection: Kanamycin (25 ug/mL)

ORF Nucleotide Sequence: >RC210822 representing NM_014411
Red=Cloning site Blue=ORF Green=Tags(s)

```
TTTTGTAATACGACTCACTATAGGGCGGCCGGAATTCGTGCGACTGGATCCGGTACCGAGGAGATCTGCC  
GCCGCGATCGCC
```

```
ATGTCTCACCCACCCCACTCACTTCGTAATTCGTGCCTTATCAGAATGGACCTGTTATACTGGCAGTTCA  
CCATATATACCATTACATTTTGTTCCTCCATCTCTCAGGTAGACTTACACTTTCGCGCCAGCACATCAG  
TCATCGCCCTTGCTTGCTTTCCTATTCCTCTGTTCTGGAAGGTGCACCACCTTTCTTGAAGGCTTC  
CCTTGCTCTCCAGGCTAGATGAGATGTCTTCCATCAGTCCCACAGCACCCCTGTGCATGTATCTGTTG  
TGCACTTACCAATAGTATACAAGGGATCTATGACCCAAGTCTCTCCAC
```

```
ACGCGTACGCGGCCGCTCGAGCAGAACTCATCTCAGAAGAGGATCTGGCAGCAAATGATATCCTGGATT  
ACAAGGATGACGACGATAAGGTTTAA
```

Protein Sequence: >RC210822 representing NM_014411
Red=Cloning site Green=Tags(s)

```
MSHHPHSLRNSCLIRMDLLYWQFTIYTITFCFSLHSGRLTLAQAQHSRPHCLLSYLLFWKVHHLFLEGF  
PCSPRLDEMSFHQFPQHPVHVSVHLPIVYKGSMTQVSPH
```

```
TRTRPLEQKLISEEDLAANDILDYKDDDDKV
```

Chromatograms: https://cdn.origene.com/chromatograms/mk6382_g05.zip

Restriction Sites: SgfI-MluI



View online »

Cloning Scheme:


ACCN: NM_014411

ORF Size: 330 bp

OTI Disclaimer: The molecular sequence of this clone aligns with the gene accession number as a point of reference only. However, individual transcript sequences of the same gene can differ through naturally occurring variations (e.g. polymorphisms), each with its own valid existence. This clone is substantially in agreement with the reference, but a complete review of all prevailing variants is recommended prior to use. [More info](#)

OTI Annotation: This clone was engineered to express the complete ORF with an expression tag. Expression varies depending on the nature of the gene.

Components: The ORF clone is ion-exchange column purified and shipped in a 2D barcoded Matrix tube containing 10ug of transfection-ready, dried plasmid DNA (reconstitute with 100 ul of water).

- Reconstitution Method:**
1. Centrifuge at 5,000xg for 5min.
 2. Carefully open the tube and add 100ul of sterile water to dissolve the DNA.
 3. Close the tube and incubate for 10 minutes at room temperature.
 4. Briefly vortex the tube and then do a quick spin (less than 5000xg) to concentrate the liquid at the bottom.
 5. Store the suspended plasmid at -20°C. The DNA is stable for at least one year from date of shipping when stored at -20°C.

RefSeq: [NM_014411.2](#), [NP_055226.1](#)

RefSeq Size: 2569 bp

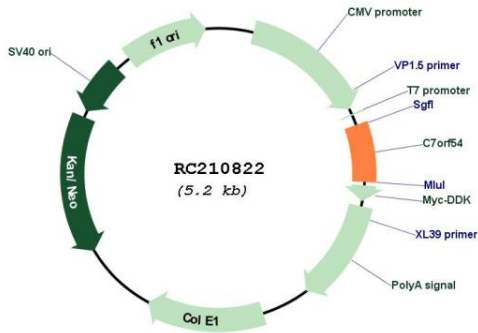
RefSeq ORF: 332 bp

Locus ID: 27099

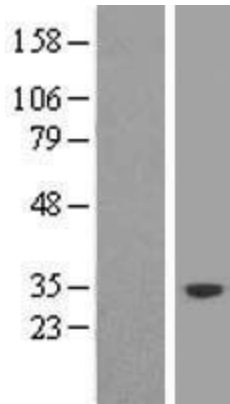
Cytogenetics: 7q32.1

MW: 12.7 kDa

Product images:



Circular map for RC210822



Western blot validation of overexpression lysate (Cat# [LY415304]) using anti-DDK antibody (Cat# [TA50011-100]). Left: Cell lysates from untransfected HEK293T cells; Right: Cell lysates from HEK293T cells transfected with RC210822 using transfection reagent MegaTran 2.0 (Cat# [TT210002]).