

Product datasheet for RC210820

AP3B2 (NM_004644) Human Tagged ORF Clone

Product data:

Product Type:	Expression Plasmids
Product Name:	AP3B2 (NM_004644) Human Tagged ORF Clone
Tag:	Myc-DDK
Symbol:	AP3B2
Synonyms:	DEE48; EIEE48; NAPT8
Mammalian Cell Selection:	Neomycin
Vector:	pCMV6-Entry (PS100001)
E. coli Selection:	Kanamycin (25 ug/mL)
ORF Nucleotide Sequence:	>RC210820 ORF sequence Red=Cloning site Blue=ORF Green=Tags(s)

TTTTGTAATACGACTCACTATAGGGCGGCCGGAATTCGTCGACTGGATCCGGTACCGAGGAGATCTGCC
GCC**CGATCGCC**

ATGTCGGCCGCCCGCCTACAGCGAAGACAAGGGCGGCTCCGCTGGCCCCGGGGAGCCCGAGTACGGCC
ACGACCCCGAGCGCGGCATCTTCTCCTCCGACTACAAGCGGCATGATGACCTGAAGGAGATGCTGGA
CACCAACAAGGATTCTCTCAAGCTGGAGGCCATGAAGAGGATTGTGGCGATGATTGCCCGAGGAAAGAAAT
GCTTCAGACCTGTTCCCGCGGTGGTGAAGAACGTGGCCTGTAAGAACATAGAGGTGAAGAAGCTTGTCT
ATGTGTACCTGGTACGCTACGCTGAGGAGCAGCAAGACCTGGCCCTGCTGTCCATCTCCACCTTCCAACG
TGGCCTAAAGGATCCCAACCAGCTGATTCGTGCCAGTGCCTCCGTGTCTCTAGCATCCGTGTGCC
ATCATAGTGCCCATCATGATGCTAGCTATCAAGGAAGCCGCTCGGACATGTCACCCATGTGCGGAAAA
CAGCTGCCACGCCATCCCTAAACTCTACAGTTTGGACTCTGACCAGAAGGATCAGCTGATAGAAGTCAT
TGAGAAGCTTCTGGTGACAAGACCACGCTGGTGGCGGGCAGTGTGGTATGGCCTTTGAGGAGGTCTGC
CCGGAGCGCATCGACCTGATTCACAAAACCTACCGAAAACCTGTAACTGCTGATCGACGTGGAGGAGT
GGGGCCAGGTGGTCATCATCAGCATGCTCACCCGCTACGCCCGCACGCAGTTCCTGAGCCCCACCCAGAA
CGAATCCCTACTAGAGGAGAACCGGAAAAAGCCTTCTACGGCTCAGAGGAGGACGAGGCCAAGGGCGCG
GGTCTGAGGAGACGGCCCGCGCGCCCGCCCTCCCGAAAGCCCTATGTCATGGACCCCGACCCGCGC
TGCTGCTGCGCAACACCAAAACCCCTGCTGCAGAGCCGACGCGCCGCGGTGGTATGGCGGTGGCGCAGCT
CTACTTCCACCTGGCGCCCAAGGCGGAAGTGGGCGTCATCGCAAGGCGTGGTGCAGCTGCTGCGCAGC
CACAGTGAGGTGCAGTACGTTGTGCTCCAGAACGTGGCCACCATGTCATCAAGCGCCGGGTATGTTTG
AGCCCTACCTGAAGAGCTTCTACATCAGGTCCACCGACCCACCCAGATTAAGATCCTGAAGCTGGAAGT
GCTGACCAACCTGGCCAATGAGACCAACATTCCTACTGTCCTACGGGAATTCAGACCTATATTCGACG
ATGGACAAGGACTTTGTGGCAGCCACAATCCAGGCCATTGGACGCTGTGCAACTAACATCGGCCGAGTCC
GTGACACCTGCCTCAATGGCCTGGTGCAGCTGCTCCAACCGTATGAGCTTGTGGTTGCAGAGTCAGT
GGTCGTCATTAAGAAATTGCTACAGATGCAGCCAGCACAAACATGGAGAGATCATCAAACACTTGGCAAAG



[View online >](#)

CTTACAGACAACATCCAGGTGCCATGGCCGAGCCAGCATCCTGTGGCTCATCGGAGAGTACTGTGAGC
 ATGTCCCCAGGATTGCACCTGATGTCTTAAGAAAAATGGCCAAGTCATTACAGCAGAGGAGGATATTGT
 CAAGCTGCAGGTCACTCAACCTGGCAGCCAAGCTCTACCTGACCAACTCTAAACAGACCAAGCTGTGACC
 CAGTATGTGCTGAGTCTGGCCAAATATGACCAGAACTATGATATTCGCGACCGGGCGCGCTTACCCGGC
 AGCTCATCGTCCCTTCCGAGCAGGGTGGGGCCCTCAGCCGCCATGCCAAGAAGCTTCTCTGGCACCCAA
 ACCAGTCCAGTCTTGGAGTCACTCTTCAAAGACCGGGACCCTCCAGCTGGGCTCACTGTCCCACCTG
 CTTAATGCCAAGGCCACAGGCTACCAGGAGCTCCAGACTGGCCGGAGGAAGCCCAAGACCCATCTGTGC
 GCAACGTGGAGGTACCTGAATGGACCAAGTCTCAAATCGGGAGAAGAGAAAGGAGAAGGAAAAACCCTT
 CTACTCGGACTCTGAGGGGAGTCAGGCCCCACGGAGTCCGCAGACAGTACCCTGAGTCTGAGAGTGAA
 TCGGACAGTAAGAGCAGCAGTGAGAGCGGCTCTGGGGAGTCCAGCAGTGAAGACCAGG
 ATGAGGATGAGGAGAAAGGGAGAGGAGTGAACAGAGTGAAGAGGATGGTAAGAGGAAGACAAA
 GAAGAAGTGCCAGAGAGAAAAGGAGAAGCGTCACTCTGATGAGGGCAGCGATTCCAGCAGTAGTCA
 TCAGAGTCCGAGATGACATCGGAGTCCGAGGAGGAGCAGTTAGAACCCTCCTCGGAGCAGGAAAACAC
 CTTCCAGCAGCAAAAGTCTCTGCAACCAAGGAGATCTCCTGCTTATCTAGAGGATTTACCCCTCC
 CAGTGTCCAGCCTGTGTCTCCCCAGCAATTGTGTCTACCAGTCTGGCTGCTGACCTGGAGGGCCTGACA
 CTCACAGACTCCACCCTGGTACCGTCTGAGTCCAGTATCGGGTGTGGCCGGCAGGAGCTGCTGC
 ACCGGGTAGTGGCGAGGGGCTGGCTGTGGACTACACCTTCAGCCGCAACCTTTCTCCGGGGATCCCCA
 CATGGTGTCCGTGCACATCCACTTCTCCAACAGCTCTGATACCCCATCAAGGGCCTGCATGTGGGCACT
 CCCAAACTGCCTGCTGGCATCAGCATCCAAGAATTTCCCGAAATTGAGTCCCTGGCACCTGGAGAATCTG
 CCACTGCTGTAATGGGCATTAATTTCTGTGACTCAACCCAGGCAGCAACTTCCAGCTGTGCACCCAGAC
 CCGACAGTTCTACGTCTCATTACGCCACTGTGGGGAGCTGATGGCCCTGTGTTTATGAGTAAAAAT
 GAGTTTAAAGAAGAACAGGAAAGCTGATGGGCATGAATGAGATCACAGAGAACTCATGCTGCCAGACA
 CCTGTCCGAGTGACCACATTGTGGTGCAGAAAGTACTGCCACTGCCAACCTGGGTCGTGTTCTCTGTGG
 GACATCTGATGAGTACAGGTTTGCAGGGAGGACACTGACTGGTGAAGCCTCGTTCTGCTGACCTGGAT
 GCCCGGCCAGCTGGAGCTGCCAGCTGACTGTCAACAGCGAGAAAATGGTATTGCACCATGCTGGTAA
 AGGATGTGATACAGGCTCTGACCCAG

ACGCGTACGCGGCCGCTCGAGCAGAAACTCATCTCAGAAGAGGATCTGGCAGCAATGATATCCTGGATT
 ACAAGGATGACGACGATAAGGTTTAA

Protein Sequence:

>RC210820 protein sequence
 Red=Cloning site Green=Tags(s)

MSAAPAYSEDKGGSSAGPEPEYGHDPASGGIFSSDYKRHDDLKEMLDTNKDSLKLEAMKRIVAMIARGKN
 ASDLFPVAVVKNVACKNIEVKKLVVYVLRVYAEQQDLALLSISTFQRGLKDPNQLIRASALRVLSSIRVP
 IIVPIMMLAIKEAASDMSPYVRKTAHAIPKLYSLDSDQKQDLIEVIEKLLADKTTLVAGSVVMAFEVVC
 PERIDL IHNKRYKLCNLLIDVEEWQVVIISMLTRYARTQFLSPTQNESLLEENAFAFYGSEDEAKGA
 GSEETAAAAAPSRKPYVMDPHRLLLRNTKPLLQSRSAVVMAVAQLYFHLAPKAEVGVIAKALVRLRS
 HSEVQYVVLQNVATMSIKRRGMFEPYLSFYIRSTDPTQIKILKLEVLNLANETNIPTVREFQTYIRS
 MDKDFVAATIQAIGRCATNIGRVRTCLNGLVQLLSNRDELVAESVVVVKLLQMQPAHQGEI IKHLAK
 LTDNIQVPMARASILWLIGEYCEHPRIAPDVLKMAKSFTEEDIVKLQVINLAALKLYLTNSKQTKLLT
 QYVLSLAKYDQNYDIRDRARFTRQLIVPSEQGALSRHAKKFLAPKAPVLESSFKDRDHFQLGSLSHL
 LNAKATGYQELPDWPEEAPDPSVRNVEVPEWTKCSNREKRKEKEKPFYSDEGESGPTESADSDPESESE
 SDSKSSSESGSGESSSESDNEDQDEDEEKGRGSESEQSEEDGKRKTKKKVPERKGEASSSDEGSDSSSS
 SESEMTSESEEEQLEPASWSRKTTPSSKSAPATKEISLLDLEDFTPPSVQPVSPPAIVSTSLAADLEGLT
 LTDSTLVPSLLSPVSGVGRQELLRVAGEGLAVDYTF SRQPFSGDPHMVSVHIFHSNSSDTIKGLHVGT
 PKLPAGISIQEFPEIESLAPGESATAVMGINFCDSTQAANFQLCTQTRQFYVSIQPPVGLMAPVFMSEN
 EFKKEQGLMGMNEITEKMLPDTCRSDHIVVQKVTATANLGRVPCGTSDEYRFAGRTL TGGSLVLLTLD
 ARPAGAAQLTVNSEKMGVIGTMLVKDVIQALTQ

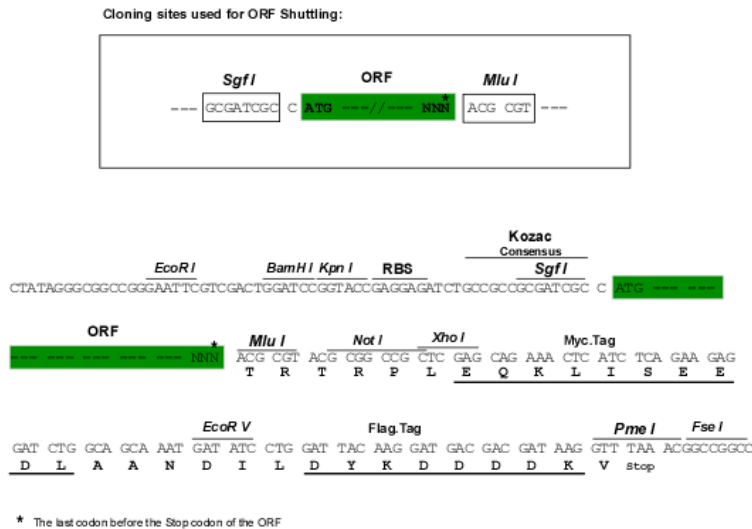
TRTRPLEQKLI SEEDLAANDILDYKDDDDKV

Chromatograms:

https://cdn.origene.com/chromatograms/mk6141_d05.zip

Restriction Sites: SgfI-MluI

Cloning Scheme:



ACCN: NM_004644

ORF Size: 3246 bp

OTI Disclaimer: The molecular sequence of this clone aligns with the gene accession number as a point of reference only. However, individual transcript sequences of the same gene can differ through naturally occurring variations (e.g. polymorphisms), each with its own valid existence. This clone is substantially in agreement with the reference, but a complete review of all prevailing variants is recommended prior to use. [More info](#)

OTI Annotation: This clone was engineered to express the complete ORF with an expression tag. Expression varies depending on the nature of the gene.

Components: The ORF clone is ion-exchange column purified and shipped in a 2D barcoded Matrix tube containing 10ug of transfection-ready, dried plasmid DNA (reconstitute with 100 ul of water).

- Reconstitution Method:
1. Centrifuge at 5,000xg for 5min.
 2. Carefully open the tube and add 100ul of sterile water to dissolve the DNA.
 3. Close the tube and incubate for 10 minutes at room temperature.
 4. Briefly vortex the tube and then do a quick spin (less than 5000xg) to concentrate the liquid at the bottom.
 5. Store the suspended plasmid at -20°C. The DNA is stable for at least one year from date of shipping when stored at -20°C.

RefSeq: [NM_004644.5](#)

RefSeq Size: 3771 bp

RefSeq ORF: 3249 bp

Locus ID: 8120

UniProt ID: [Q13367](#)

Cytogenetics: 15q25.2

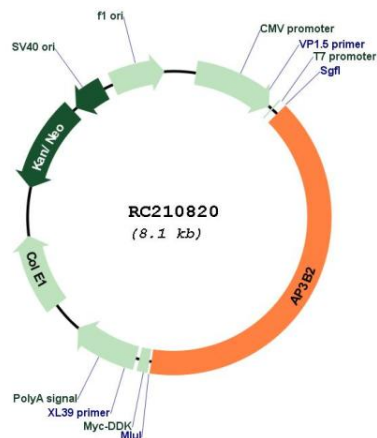
Domains: Adaptin_N

Protein Pathways: Lysosome

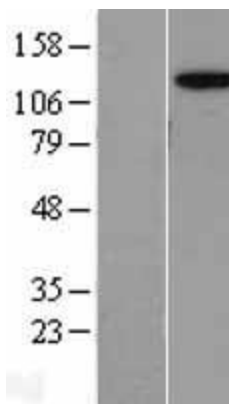
MW: 119.1 kDa

Gene Summary: Adaptor protein complex 3 (AP-3 complex) is a heterotrimeric protein complex involved in the formation of clathrin-coated synaptic vesicles. The protein encoded by this gene represents the beta subunit of the neuron-specific AP-3 complex and was first identified as the target antigen in human paraneoplastic neurologic disorders. The encoded subunit binds clathrin and is phosphorylated by a casein kinase-like protein, which mediates synaptic vesicle coat assembly. Defects in this gene are a cause of early-onset epileptic encephalopathy. [provided by RefSeq, Feb 2017]

Product images:



Circular map for RC210820



Western blot validation of overexpression lysate (Cat# [LY401473]) using anti-DDK antibody (Cat# [TA50011-100]). Left: Cell lysates from untransfected HEK293T cells; Right: Cell lysates from HEK293T cells transfected with RC210820 using transfection reagent MegaTran 2.0 (Cat# [TT210002]).