

Product datasheet for **RC210816**

PODXL (NM_005397) Human Tagged ORF Clone

Product data:

Product Type:	Expression Plasmids
Product Name:	PODXL (NM_005397) Human Tagged ORF Clone
Tag:	Myc-DDK
Symbol:	PODXL
Synonyms:	gp135; Gp200; PC; PCLP; PCLP-1; PDX; PODXL1
Mammalian Cell Selection:	Neomycin
Vector:	pCMV6-Entry (PS100001)
E. coli Selection:	Kanamycin (25 ug/mL)



[View online »](#)

ORF Nucleotide Sequence:

>RC210816 ORF sequence
 Red=Cloning site Blue=ORF Green=Tags(s)

TTTTGTAATACGACTCACTATAGGGCGGCCGGAATTCGTCGACTGGATCCGGTACCGAGGAGATCTGCC
 GCC**CGGATCGCC**

ATGCGCTGCGCGCTGGCGCTCTCGGCGTCTGCTACTGTTGTCAACGCCGCGCTGCTGCCGTCGTCGC
 CGTCGCCGTCGCCGTCGCCCTCCAGAATGCAACCCAGACTACTACGGACTCATCTAACAAAACAGCACC
 GACTCCAGCATCCAGTGTCAACATCATGGCTACAGATACAGCCAGCAGACAGTCCCACTTCCAAG
 GCCAACGAAATCTTGGCCTCAGTCAAGGCGACCACCTTGGTGTATCCAGTGACTCACGGGGACTACAA
 CCCTGGCTCAGCAAGTCTCAGGCCAGTCAACTACCGTGGCTAGAGGAGGGCGCTCAGGCAACCTTAC
 TACCACCATCGAGAGCCCAAGAGCACAAAAGTGCAGACACCACTACAGTTGCAACCTCCACAGCCACA
 GCTAAACCTAACACCACAAGCAGCCAGAATGGAGCAGAAGATAACAACAACTCTGGGGGAAAAGCAGCC
 ACAGTGTGACCACAGACCTCACATCCACTAAGGCAGAACATCTGACGACCCCTCACCTACAAGTCCACT
 TAGCCCCGACAACCCACTTCGACGCATCTGTGGCCACCCCAACAAGCTCGGGACATGACCATCTTATG
 AAAATTTCAAGCAGTTCAAGCACTGTGGCTATCCCTGGCTACACCTTACAAGCCCGGGGATGACCACCA
 CCCTACCGTCATCGGTTATCTCGCAAAGAACTCAACAGACCTCCAGTCAGATGCCAGCCAGCTCTACGGC
 CCCTTCTCCCAGGAGACAGTGCAGCCCAGAGCCCGCAACGGCATTGAGAACCTACCTGCCAGAG
 ACCATGAGCTCCAGCCCCACAGCAGCATCAACTACCCACCGATACCCCAAAACACCTTCTCCCACTGTGG
 CTCATGAGAGTAACTGGGCAAAGTGTGAGGATCTTGAGACACAGACACAGAGTGAGAAGCAGCTCGTCT
 GAACCTCACAGGAAACACCTCTGTGCAGGGGGCGCTTCGGATGAGAAATTGATCTCACTGATATGCCGA
 GCAGTCAAAGCCACCTTCAACCCGGCCCAAGATAAGTCCGGCATACGGCTGGCATCTGTTCCAGGAAGTC
 AGACCGTGGTTCGTCAAAGAAATCACTATTCACACTAAGCTCCCTGCCAAGGATGTGTACGACGGCTGAA
 GGACAAATGGGATGAACTAAAGGAGGCAGGGTCAAGTACATGAAAGCTAGGGGACCAGGGGCCACCGGAG
 GAGGCCGAGGACCGCTTACGATGCCCTCATCATCACCATCGTCTGCATGGCATCATTCTGCTCTCG
 TGGCGGCCCTCTATGGCTGCTGCCACCAGCGCCTCTCCAGAGGAAGACCAGCAGCGGCTAACAGAGGA
 GCTGCAGACAGTGGAGAATGGTTACCATGACAACCAACACTGGAAGTGTGGAGACCTCTTCTGAGATG
 CAGGAGAAGAAGTGGTCAAGCTCAACGGGAGCTGGGGACAGCTGGATCGTCCCTCTGGACACCTGA
 CCAAGGACGACCTGGATGAGGAGGAAGACACACCTC

ACGCGTACGCGGCCGCTCGAGCAGAACTCATCTCAGAAGAGGATCTGGCAGCAAATGATATCTGGATT
 ACAAGGATGACGACGATAAGGTTTAA

Protein Sequence:

>RC210816 protein sequence
 Red=Cloning site Green=Tags(s)

MRCALALSALLLLSTPPLLSPSPSPSPSQNATQTTDSSNKTAPTPASSVTIMATDQAQSTVPTSK
 ANEILASVKATTLGVSSDSPGTTTLLAQVSGPVNTTVARGGSGNPTTIESPKSTKSADTTTATSTAT
 AKPNTTSSQNGAEDTTNSGGKSSHSVTDLTSTKAEHLTPHPTSPLSPRQPTSTHPVATPTSSGHDHLM
 KISSSSSTVAIPGYFTSPGMTTLPSSVISQRTQTSSQMPASSTAPSSQETVQPTSPATALRPTLPE
 TMSSSPTAASTTHRYPKTPSPTVAHESNWAKCEDLETQTQSEKQLVLNLTGNTLCAGGASDEKLISLICR
 AVKATFNPAQDKCGIRLASVPGSQTVVVEIITHTKLPKDVYERLKDWDDELKEAGVSDMKLGDQGPPE
 EAEDRFSMPLIITIVCMASFLLVAALYGCHQRLSQRKDQQLTEELQTVENGYHDNPTLEVMTSSEM
 QEKKVVSLNGELGDSWIVPLDNLTKDDLDEEEDTHL

TRTRPLEQKLISEEDLAANDILDYKDDDDKV

Chromatograms:

https://cdn.origene.com/chromatograms/mk6137_d03.zip

Restriction Sites:

Sgfl-Mlul

Cloning Scheme:



ACCN: NM_005397

ORF Size: 1578 bp

OTI Disclaimer: The molecular sequence of this clone aligns with the gene accession number as a point of reference only. However, individual transcript sequences of the same gene can differ through naturally occurring variations (e.g. polymorphisms), each with its own valid existence. This clone is substantially in agreement with the reference, but a complete review of all prevailing variants is recommended prior to use. [More info](#)

OTI Annotation: This clone was engineered to express the complete ORF with an expression tag. Expression varies depending on the nature of the gene.

Components: The ORF clone is ion-exchange column purified and shipped in a 2D barcoded Matrix tube containing 10ug of transfection-ready, dried plasmid DNA (reconstitute with 100 ul of water).

Reconstitution Method:

1. Centrifuge at 5,000xg for 5min.
2. Carefully open the tube and add 100ul of sterile water to dissolve the DNA.
3. Close the tube and incubate for 10 minutes at room temperature.
4. Briefly vortex the tube and then do a quick spin (less than 5000xg) to concentrate the liquid at the bottom.
5. Store the suspended plasmid at -20°C. The DNA is stable for at least one year from date of shipping when stored at -20°C.

Note: Plasmids are not sterile. For experiments where strict sterility is required, filtration with 0.22um filter is required.

RefSeq: [NM_005397.4](#)

RefSeq Size: 5911 bp

RefSeq ORF: 1581 bp

Locus ID: 5420

UniProt ID: [O00592](#)

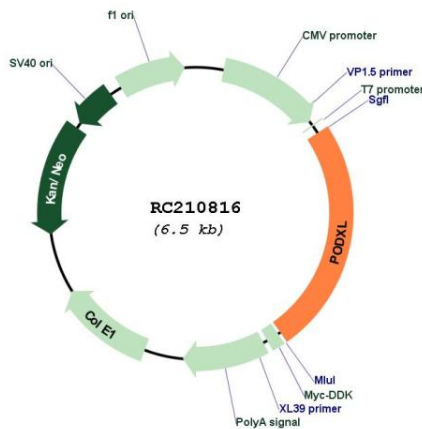
Cytogenetics: 7q32.3

Protein Families: Transmembrane

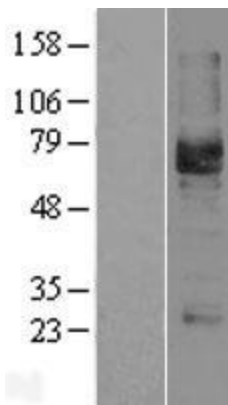
MW: 55.4 kDa

Gene Summary: This gene encodes a member of the sialomucin protein family. The encoded protein was originally identified as an important component of glomerular podocytes. Podocytes are highly differentiated epithelial cells with interdigitating foot processes covering the outer aspect of the glomerular basement membrane. Other biological activities of the encoded protein include: binding in a membrane protein complex with Na⁺/H⁺ exchanger regulatory factor to intracellular cytoskeletal elements, playing a role in hematopoietic cell differentiation, and being expressed in vascular endothelium cells and binding to L-selectin. [provided by RefSeq, Jul 2008]

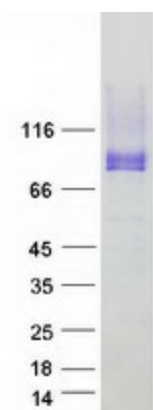
Product images:



Circular map for RC210816



Western blot validation of overexpression lysate (Cat# [LY401657]) using anti-DDK antibody (Cat# [TA50011-100]). Left: Cell lysates from untransfected HEK293T cells; Right: Cell lysates from HEK293T cells transfected with RC210816 using transfection reagent MegaTran 2.0 (Cat# [TT210002]).



Coomassie blue staining of purified PODXL protein (Cat# [TP310816]). The protein was produced from HEK293T cells transfected with PODXL cDNA clone (Cat# RC210816) using MegaTran 2.0 (Cat# [TT210002]).