

Product datasheet for RC210814

RCE1 (NM_001032279) Human Tagged ORF Clone

Product data:

Product Type:	Expression Plasmids
Product Name:	RCE1 (NM_001032279) Human Tagged ORF Clone
Tag:	Myc-DDK
Symbol:	RCE1
Synonyms:	FACE2; RCE1A; RCE1B
Mammalian Cell Selection:	Neomycin
Vector:	pCMV6-Entry (PS100001)
E. coli Selection:	Kanamycin (25 ug/mL)
ORF Nucleotide Sequence:	>RC210814 ORF sequence Red=Cloning site Blue=ORF Green=Tags(s)

TTTTGTAATACGACTCACTATAGGGCGGCCGGAATTCGTCGACTGGATCCGGTACCGAGGAGATCTGCC
GCC**CGATCGCC**

ATGGCGGCGCTGGGCGGGGATGGGCTGCGACTGCTGTCCGGTGTCCGGCCGGAGCGGCCGCCGAGTCGG
CGGCGCTGGGCGGCTGGGCCCGGGCTGTGCTGCTGGGTGTCACTGTTCTCCTGCCTCAGCCTCGCCTG
CTCCTACGTGGGCGAGCCTCTACGTCTGGAAGAGCGAACTGCCAGGGACCATCCCGCGGTATCAAGCGA
CGCTTCACCAGCGTCTGGTGGTGTCCAGTCTCTACCCCTGTGCGTGTCTCTGGAGGGAACACAG
GCATCCAGCCAGGCACATCCCTGCTCACCTGATGGGCTTCAGGCTGGAGGGCATTTCAGCGCGCGCT
GCTGCCCTGTTGCTGACCATGATTCTTTCTGGGCCCACTGATGCAGCTCTCTATGGATTGCCCTTGT
GACCTGGCAGATGGGCTGAAGTTGTCCTGGCCCCCGCTCCTGGGCCCGCTGCCTCACAGACATGCGTT
GGCTGCGGAACCAAGTGATCGCCCCGCTGACAGAGGAGCTGGTGTCCGGGCTGTATGCTGCCATGTT
AGCACCCTGATGGGCTGGGCCCTGCTGTGTTACCTGCCCGCTCTTTTTGGAGTTGCCATTTTCAC
CATATTATTGAGCAGCTGCGTTTCCGCCAGAGCAGCGTGGGGAACATCTTCTGTCTGCTGCGTTCCAGT
TCTCTACACAGCTGTCTCGGTGCCTACACTGCTTTCTCTTCCAGCAGGACACCTGATTGGGCC
GGTTCTCTGCCATTCTTCTGCAATTACATGGGTTTCCAGCTGTTTGGCGGCCCTGGAGCACCCACAG
AGGCGGCCCTGCTGGCAGGCTATGCCCTGGGTGGGACTCTTCTGCTTCTGCTCCAGCCCCTCACGG
ACCCCAAGCTCTACGGCAGCCTTCCCCTTGTGTGCTTTTGGAGCGGGCAGGGGACTCAGAGGCTCCCCT
GTGCTCC

ACGCGTACGCGGCCGCTCGAGCAGAACTCATCTCAGAAGAGGATCTGGCAGCAAATGATATCCTGGATT
ACAAGGATGACGACGATAAGGTTTAA



[View online »](#)

Protein Sequence: >RC210814 protein sequence
Red=Cloning site Green=Tags(s)

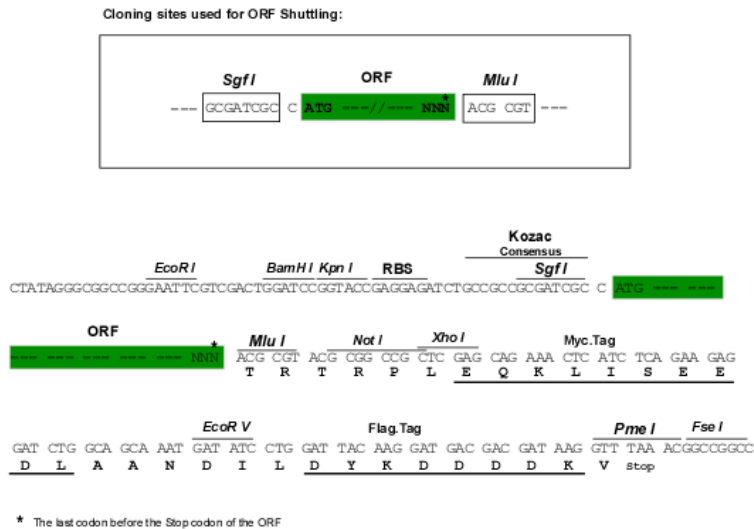
MAALGGDGLRLLSVSRPERPPESAALGGLGPLCCWVSFVSLACSYVGSLYVWKSELPRDHPAVIKR
 RFTSVLVVSSL SPLCVLLWREL TGIQPGTSL TLMGFRLEGI FPAALLPLLL TMILFLGPLMQLSMDPC
 DLADGLKVV LAPRSWARCL TDMRWLRNQVIAPL TEELVFRACMLPMLAPCMGLGPAVFTCP LFFGVAHFH
 HIIEQLRFRQSSVGNIFLSAAFQFSYTA VFGAYTAF LFIRTGHL IGPVLC HSF CNYMGFFAVCAALEHPQ
 RRPLLAGYALGVGLFLLLLQPLTDPKLYGSLPLCVLLERAGDSEAPLCS

TRTRPLEQKLISEEDLAANDILDYKDDDDKV

Chromatograms: https://cdn.origene.com/chromatograms/mk6584_c01.zip

Restriction Sites: SgfI-MluI

Cloning Scheme:



ACCN: NM_001032279

ORF Size: 987 bp

OTI Disclaimer: The molecular sequence of this clone aligns with the gene accession number as a point of reference only. However, individual transcript sequences of the same gene can differ through naturally occurring variations (e.g. polymorphisms), each with its own valid existence. This clone is substantially in agreement with the reference, but a complete review of all prevailing variants is recommended prior to use. [More info](#)

OTI Annotation: This clone was engineered to express the complete ORF with an expression tag. Expression varies depending on the nature of the gene.

Components: The ORF clone is ion-exchange column purified and shipped in a 2D barcoded Matrix tube containing 10ug of transfection-ready, dried plasmid DNA (reconstitute with 100 ul of water).

Reconstitution Method:

1. Centrifuge at 5,000xg for 5min.
2. Carefully open the tube and add 100ul of sterile water to dissolve the DNA.
3. Close the tube and incubate for 10 minutes at room temperature.
4. Briefly vortex the tube and then do a quick spin (less than 5000xg) to concentrate the liquid at the bottom.
5. Store the suspended plasmid at -20°C. The DNA is stable for at least one year from date of shipping when stored at -20°C.

RefSeq Size: 1485 bp

RefSeq ORF: 678 bp

Locus ID: 9986

UniProt ID: [Q9Y256](#)

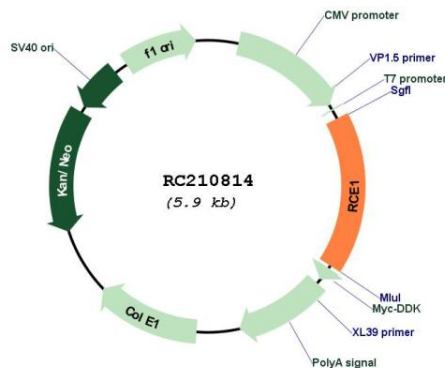
Cytogenetics: 11q13.2

Protein Families: Protease, Transmembrane

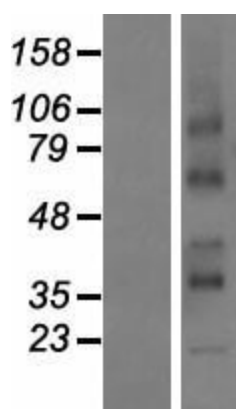
MW: 35.8 kDa

Gene Summary: This gene encodes an integral membrane protein which is classified as a member of the metalloproteinase family. This enzyme is thought to function in the maintenance and processing of CAAX-type prenylated proteins. [provided by RefSeq, Jul 2008]

Product images:



Circular map for RC210814



Western blot validation of overexpression lysate (Cat# [LY422291]) using anti-DDK antibody (Cat# [TA50011-100]). Left: Cell lysates from untransfected HEK293T cells; Right: Cell lysates from HEK293T cells transfected with RC210814 using transfection reagent MegaTran 2.0 (Cat# [TT210002]).