

## Product datasheet for **RC210813**

### Metabotropic Glutamate Receptor 8 (GRM8) (NM\_000845) Human Tagged ORF Clone

#### Product data:

Product Type:	Expression Plasmids
Product Name:	Metabotropic Glutamate Receptor 8 (GRM8) (NM_000845) Human Tagged ORF Clone
Tag:	Myc-DDK
Symbol:	Metabotropic Glutamate Receptor 8
Synonyms:	GLUR8; GPRC1H; mGlu8; MGLUR8
Mammalian Cell Selection:	Neomycin
Vector:	pCMV6-Entry (PS100001)
E. coli Selection:	Kanamycin (25 ug/mL)



[View online »](#)

**ORF Nucleotide Sequence:**

>RC210813 ORF sequence  
 Red=Cloning site Blue=ORF Green=Tags(s)

TTTTGTAATACGACTCACTATAGGGCGGCCGGAATTCGTCGACTGGATCCGGTACCGAGGAGATCTGCC  
 GCC**CGCATCGCC**

ATGGTATGCGAGGAAAGCGATCAGCCTCTGCCCTTGTTCCTCTTGACCGCCAAGTTCTACTGGA  
 TCCTCACAAATGATGCAAAGAAGCTCACAGCCAGGAGTATGCCATTCCATACGGGTGGATGGGACATTAT  
 TTTGGGGGGTCTCTTCCCTGTCCACGAAAGGGAGAGAGAGGGGTGCCTTGTGGGGAGCTGAAGAAGGAA  
 AAGGGGATTCACAGACTGGAGGCCATGCTTTATGCAATTGACCAGATTAACAAGGACCCTGATCTCCTTT  
 CCAACATCACTCTGGGTGCCGCATCTCGACACGTGCTCTAGGGACACCTATGCTTTGGAGCAGTCTCT  
 AACATTCGTGCAGGCATTAATAGAGAAAGATGCTTCGGATGTGAAGTGTGCTAATGGAGATCCACCCATT  
 TTCACCAAGCCCACAAGATTTCTGGCGTCATAGGTGCTGCAGCAAGCTCCGTGTCCATCATGGTTGCTA  
 ACATTTTAAGACTTTTTAAGATACCTCAAATCAGCTATGCATCCACAGCCCCAGAGCTAAGTGATAACAC  
 CAGGTATGACTTTTTCTCTCGAGTGGTTCGGCCTGACTCTACCAAGCCCAAGCCATGGTGGACATCGTG  
 ACAGCACTGGGATGGAATTATGTTTCGACACTGGCTTCTGAGGGGAACTATGGTGAGAGCGGTGTGGAGG  
 CCTTCACCCAGATCTCGAGGGAGATTGGTGGTGTTCATTGCTCAGTCACAGAAAATCCCACGTGAACC  
 AAGACCTGGAGAAATTTGAAAAATATCAAACGCCTGCTAGAAAACACCTAATGCTCGAGCAGTGATTATG  
 TTTGCCAATGAGGATGACATCAGGAGGATATTGGAAGCAGCAAAAAAAGTAAACCAAGTGGGCATTTTC  
 TCTGGATTGGCTCAGATAGTTGGGGATCCAAAATAGCACCTGTCTATCAGCAAGAGGAGATTGCAGAAGG  
 GGCTGTGACAATTTGCCAAACGAGCATCAATTGATGGATTTGATCGATACTTTAGAAGCCGAAGCTTT  
 GCCAATAATCGAAGAAATGTGTGGTTGCAGAATCTGGGAGGAGAATTTGGCTGCAAGTTAGGATCAC  
 ATGGGAAAAGGAACAGTCATATAAAGAAATGCACAGGGCTGGAGCGAATTTGCTCGGGATTCATCTTATGA  
 ACAGGAAGGAAAAGTCCAATTTGTAATTGATGCTGTATATCCATGGCTTACGCCCTGCACAATATGCAC  
 AAAGATCTCTGCCTGGATACATTGGCCTTTGTCCACGAATGAGTACCATTGATGGGAAAGAGCTACTTG  
 GTTATATTCGGGCTGTAATTTAATGGCAGTGTGGCACTCCTGTCACTTTTAATGAAAACGGAGATGC  
 TCCTGGACGTTATGATATCTTCCAGTATCAAATAACCAACAAAAGCACAGAGTACAAAGTCATCGGCCAC  
 TGGACCAATCAGCTTCATCTAAAAGTGGAAAGACATGCAGTGGGCTCATAGAGAACATACTCACCCGGCGT  
 CTGTCTGCAGCCTGCCGTGAAGCCAGGGGAGAGGAAGAAAACGGTGAAGGGGTCCCTTGTCTGGCA  
 CTGTGAACGCTGTGAAGTTACAACCTACCAGGTGGATGAGCTGTCTGTGAAGTTTGGCCTCTGGATCAG  
 AGACCAACATGAACCGCACAGGCTGCCAGCTTATCCCCATCATCAAATGGAGTGGCATTCTCCCTGGG  
 CTGTGGTGCCTGTGTTTGTGCAATATTGGGAATCATCGCCACCACCTTTGTGATCGTGACCTTTGTCCG  
 CTATAATGACACACCTATCGTGAGGGCTTCAGGACGCGAACTTAGTTACGTGCTCCTAACGGGGATTTTT  
 CTCTGTTATTCAATCACGTTTTTAATGATTGCAGCACCAGATACAATCATATGCTCCTCCGACGGGTCT  
 TCCTAGGACTTGGCATGTGTTTCAGCTATGCAGCCCTTCTGACCAAAAACAAACCGTATCCACCGAATATT  
 TGAGCAGGGGAAGAAATCTGTCACAGCGCCCAAGTTCATTAGTCCAGCATCTCAGCTGGTGTACACCTTC  
 AGCCTCATCTCCGTCCAGCTCCTTGGAGTGTGTCTGGTTTGTGTGGATCCCCCACATCATCATTG  
 ACTATGGAGAGCAGCGGACACTAGATCCAGAGAAGGCCAGGGGAGTGTCAAGTGTGACATTTCTGATCT  
 CTCACCTATTTGTTCACTTGGATACAGTATCCTCTTGTGGTCACTTGTACTGTTTATGCCATTAACCG  
 AGAGGTGTCCAGAGACTTTCAATGAAGCCAAACCTATTGGATTTACCATGTATACCACCTGCATCATT  
 GGTTAGCTTTTATCCCCATCTTTTTTGGTACAGCCAGTCAGCAGAAAAGATGTACATCCAGACAACAAC  
 ACTTACTGTCTCCATGAGTTAAGTGTTCAGTATCTCTGGCATGCTCTATATGCCAAGGTTTATATT  
 ATAATTTTTATCCAGAACAGAATGTTCAAAAACGCAAGAGGAGCTTCAAGGCTGTGGTACAGCTGCCA  
 CCATGCAAAGCAAAGTATCCAAAAGGAAATGACAGACCAAATGGCGAGGTGAAAAGTGAAGTCTGTGA  
 GAGTCTTGAACCAACACTTCTCTACCAAGACAACATATATCAGTTACAGCAATCATTTCAATC

**ACGCGT**ACGCGGCCGCTCGAGCAGAAACTCATCTCAGAAGAGGATCTGGCAGCAAATGATATCTGGATT  
 ACAAGGATGACGACGATAAGGTTTAA

**Protein Sequence:** >RC210813 protein sequence  
 Red=Cloning site Green=Tags(s)

```

MVCEGKRSASPCFFLLTAKFYWILTMMQRTHSQEYAH SIRVDGDIILGGLFPVHAKGERGVPCGELKKE
KGIHRLEAMLYAIDQINKDPDLLSNITLGVRILDTC SRDTYALEQSLTFVQALIEKDASDVKANGDPPI
FTKPKDISGVIGAAASSVSIMVANILRLFKIPQISYASTAPELSDNTRYDFFSRVVPDYSYQAQAMVDIV
TALGWNYVSTLASEGNYGESGVEAFTQISREIGGV CIAQSQKIPREPRGFEKIIKRLLLETPNARAVIM
FANEDDIRRILEAAKKNLQSGHFLWIGSDSWGSKIAPVYQEEIEAGAVTILPKRASIDGFDYFRSRTL
ANNRRNVWFAEFWEENFGCKLGSHGKRNSHIKCTGLER IARDSSYEQEGKVQFVIDAVYSMAYALHNMH
KDLCPGYIGLCPRMSTIDGKELLYIRAVNFNGSAGTPVTFNENG DAPGRYDIFQYQITNKSTEYKVI GH
WTNQLHLKVEDMQWAHREHTHPASVCSLPCKPGERKKT VKGVPCCWHCERCEGNYQVDELSCELCPLDQ
RPNMNR TG CQLIPIIKLEWHSPWAVVPVFVAILGIATTFVIVTFVRYNDTPIVRASGRELSYVLLTGIF
LCYSITFLMIAAPDTIICSFRRVFLGLGMCF SYAALLTKTNRIHRIFEQ GKSVTAPKFISPASQLVITF
SLISVQLLGVFVWFVVDPPHIIIDYGEQRTL DPEKARGVLKCDISDLSL ICSLGYSILLMVTCTVYAIKT
RGVPETFNEAKPIGFTMYTTCIIWLA FIPIFFGTAQSAEKMYIQTTTLTVSMLSASVSLGMLYMPKVYI
IIFHPEQNVQKRKR SFKAVVTAATMQSKLIQKGNDRPNGEVKSELCE SLETNTSSTKTTYISYNSHSI
  
```

TRTRPLEQKLISEEDLAANDILDYKDDDDKV

**Chromatograms:** [https://cdn.origene.com/chromatograms/mk6201\\_b12.zip](https://cdn.origene.com/chromatograms/mk6201_b12.zip)

**Restriction Sites:** SgfI-MluI

**Cloning Scheme:**

Cloning sites used for ORF Shuttling:



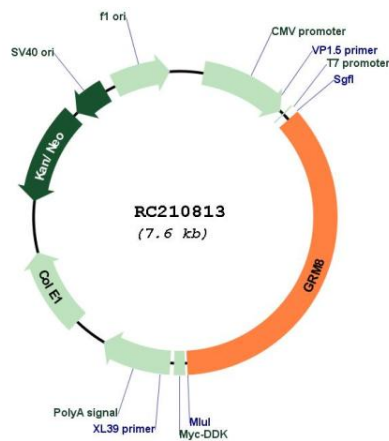
\* The last codon before the Stop codon of the ORF

**ACCN:** NM\_000845

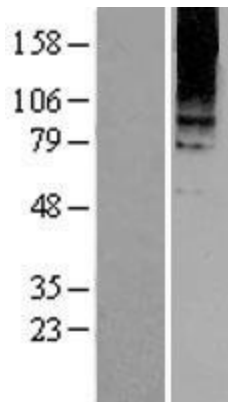
<b>ORF Size:</b>	2724 bp
<b>OTI Disclaimer:</b>	The molecular sequence of this clone aligns with the gene accession number as a point of reference only. However, individual transcript sequences of the same gene can differ through naturally occurring variations (e.g. polymorphisms), each with its own valid existence. This clone is substantially in agreement with the reference, but a complete review of all prevailing variants is recommended prior to use. <a href="#">More info</a>
<b>OTI Annotation:</b>	This clone was engineered to express the complete ORF with an expression tag. Expression varies depending on the nature of the gene.
<b>Components:</b>	The ORF clone is ion-exchange column purified and shipped in a 2D barcoded Matrix tube containing 10ug of transfection-ready, dried plasmid DNA (reconstitute with 100 ul of water).
<b>Reconstitution Method:</b>	<ol style="list-style-type: none"><li>1. Centrifuge at 5,000xg for 5min.</li><li>2. Carefully open the tube and add 100ul of sterile water to dissolve the DNA.</li><li>3. Close the tube and incubate for 10 minutes at room temperature.</li><li>4. Briefly vortex the tube and then do a quick spin (less than 5000xg) to concentrate the liquid at the bottom.</li><li>5. Store the suspended plasmid at -20°C. The DNA is stable for at least one year from date of shipping when stored at -20°C.</li></ol>
<b>RefSeq:</b>	<a href="#">NM_000845.3</a>
<b>RefSeq Size:</b>	3572 bp
<b>RefSeq ORF:</b>	2727 bp
<b>Locus ID:</b>	2918
<b>UniProt ID:</b>	<a href="#">O00222</a>
<b>Cytogenetics:</b>	7q31.33
<b>Domains:</b>	7tm_3, ANF_receptor
<b>Protein Families:</b>	Druggable Genome, GPCR, Transmembrane
<b>Protein Pathways:</b>	Neuroactive ligand-receptor interaction
<b>MW:</b>	101.7 kDa

**Gene Summary:**

L-glutamate is the major excitatory neurotransmitter in the central nervous system and activates both ionotropic and metabotropic glutamate receptors. Glutamatergic neurotransmission is involved in most aspects of normal brain function and can be perturbed in many neuropathologic conditions. The metabotropic glutamate receptors are a family of G protein-coupled receptors, that have been divided into 3 groups on the basis of sequence homology, putative signal transduction mechanisms, and pharmacologic properties. Group I includes GRM1 and GRM5 and these receptors have been shown to activate phospholipase C. Group II includes GRM2 and GRM3 while Group III includes GRM4, GRM6, GRM7 and GRM8. Group II and III receptors are linked to the inhibition of the cyclic AMP cascade but differ in their agonist selectivities. Alternatively spliced transcript variants encoding different isoforms have been described for this gene. [provided by RefSeq, Jul 2008]

**Product images:**


Circular map for RC210813



Western blot validation of overexpression lysate (Cat# [LY426746]) using anti-DDK antibody (Cat# [TA50011-100]). Left: Cell lysates from untransfected HEK293T cells; Right: Cell lysates from HEK293T cells transfected with [RC226256] using transfection reagent MegaTran 2.0 (Cat# [TT210002]).