

## Product datasheet for RC210802

### PIN4 (NM\_006223) Human Tagged ORF Clone

#### Product data:

**Product Type:** Expression Plasmids  
**Product Name:** PIN4 (NM\_006223) Human Tagged ORF Clone  
**Tag:** Myc-DDK  
**Symbol:** PIN4  
**Synonyms:** EPVH; PAR14; PAR17  
**Mammalian Cell Selection:** Neomycin  
**Vector:** pCMV6-Entry (PS100001)  
**E. coli Selection:** Kanamycin (25 ug/mL)  
**ORF Nucleotide Sequence:** >RC210802 ORF sequence  
 Red=Cloning site Blue=ORF Green=Tags(s)

TTTTGTAATACGACTCACTATAGGGCGGCCGGAATTCGTCGACTGGATCCGGTACCGAGGAGATCTGCC  
GCC**CGATCGCC**

ATGCCCATGGCGGGCTTCTAAAGGGCTTGTACGGCACTGGAGCAGTTCAGAGTTCAACAACAAGCTT  
CCAAGATGCCGCCAAAGGAAAAAGTGGTCTGGAAAAGCGGGAAAGGGGAGCAGCCTCTGGGAGTGA  
CAGTGTGACAAGAAGGCTCAAGTCCCAAAGGTGGTGGCAATGCAGTAAAGGTCAGACACATTCTATGT  
GAAAAACATGGCAAATCATGGAAGCCATGAAAAAGTAAAGTCTGGGATGAGATTCAATGAAGTGGCCG  
CACAGTATAGTGAAGATAAAGCCAGGCAAGGGGTGACTTGGGTGGATGACCAGAGGTCATGGTGGG  
ACCATTTCAAGAAGCAGCATTTGCCTTGCTGTAAAGTGGGATGGATAAGCCTGTGTTACAGACCCACCG  
GTTAAGACAAAATTTGGATATCATATTATTATGGTCAAGGAAGAAAA

**ACGCGT**ACGCGGCCGCTCGAGCAGAACTCATCTCAGAAGAGGATCTGGCAGCAAATGATATCCTGGATT  
ACAAGGATGACGACGATAAGGTTTAA

**Protein Sequence:** >RC210802 protein sequence  
 Red=Cloning site Green=Tags(s)

MPMAGLLKGLVLRQLEQFRVQQASKMPPKKGSGKAGKGAASGSDSADKKAQGPKGNNVAVRHLIC  
EKHGKIMEAMEKLSGMRFNVAQAQYSEDKARQGGDLGWMTRGSMVGPQEAALFALPVSGMDKPVFDDPP  
VKTKFGYHIIMVEGRK

**TR**TRPLEQKLISEEDLAANDILDYKDDDDKV

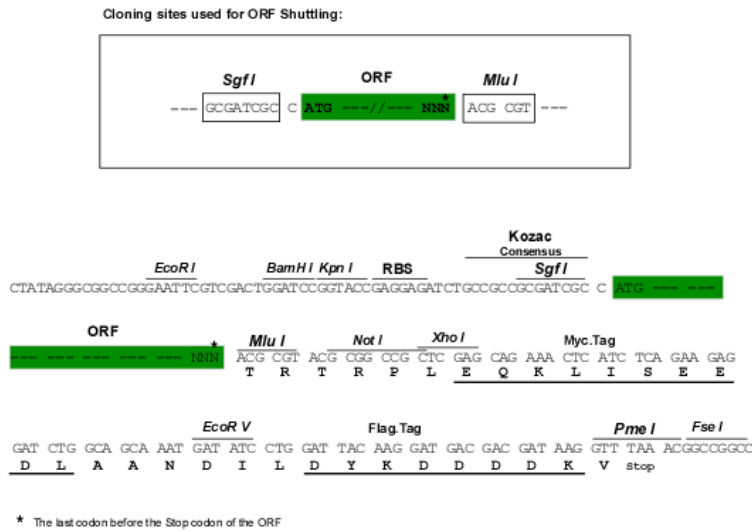
**Chromatograms:** [https://cdn.origene.com/chromatograms/mk6007\\_c08.zip](https://cdn.origene.com/chromatograms/mk6007_c08.zip)



[View online >](#)

Restriction Sites: SgfI-MluI

Cloning Scheme:



ACCN: NM\_006223

ORF Size: 468 bp

OTI Disclaimer: The molecular sequence of this clone aligns with the gene accession number as a point of reference only. However, individual transcript sequences of the same gene can differ through naturally occurring variations (e.g. polymorphisms), each with its own valid existence. This clone is substantially in agreement with the reference, but a complete review of all prevailing variants is recommended prior to use. [More info](#)

OTI Annotation: This clone was engineered to express the complete ORF with an expression tag. Expression varies depending on the nature of the gene.

Components: The ORF clone is ion-exchange column purified and shipped in a 2D barcoded Matrix tube containing 10ug of transfection-ready, dried plasmid DNA (reconstitute with 100 ul of water).

Reconstitution Method:

1. Centrifuge at 5,000xg for 5min.
2. Carefully open the tube and add 100ul of sterile water to dissolve the DNA.
3. Close the tube and incubate for 10 minutes at room temperature.
4. Briefly vortex the tube and then do a quick spin (less than 5000xg) to concentrate the liquid at the bottom.
5. Store the suspended plasmid at -20°C. The DNA is stable for at least one year from date of shipping when stored at -20°C.

RefSeq: [NM\\_006223.3](#), [NP\\_006214.2](#)

RefSeq Size: 1331 bp

RefSeq ORF: 396 bp

Locus ID: 5303

UniProt ID: [Q9Y237](#)

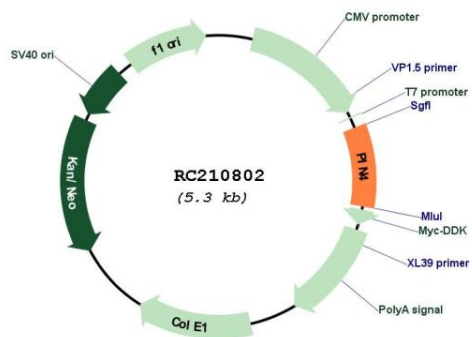
Cytogenetics: Xq13.1

Domains: Rotamase

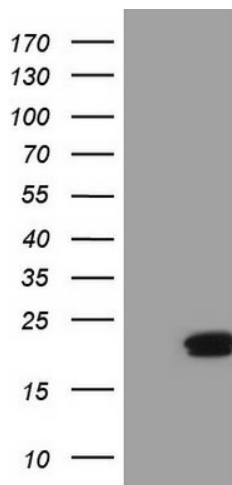
MW: 16.6 kDa

**Gene Summary:** This gene encodes a member of the parvulin subfamily of the peptidyl-prolyl cis/trans isomerase protein family. The encoded protein catalyzes the isomerization of peptidylprolyl bonds, and may play a role in the cell cycle, chromatin remodeling, and/or ribosome biogenesis. The encoded protein may play an additional role in the mitochondria. [provided by RefSeq, Dec 2009]

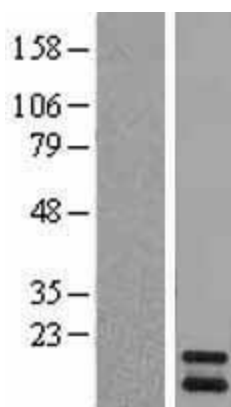
### Product images:



Circular map for RC210802



HEK293T cells were transfected with the pCMV6-ENTRY control (Cat# [PS100001], Left lane) or pCMV6-ENTRY PIN4 (Cat# RC210802, Right lane) cDNA for 48 hrs and lysed. Equivalent amounts of cell lysates (5 ug per lane) were separated by SDS-PAGE and immunoblotted with anti-PIN4 (Cat# [TA808412])(1:2000). Positive lysates [LY401874] (100ug) and [LC401874] (20ug) can be purchased separately from OriGene.



Western blot validation of overexpression lysate (Cat# [LY401874]) using anti-DDK antibody (Cat# [TA50011-100]). Left: Cell lysates from untransfected HEK293T cells; Right: Cell lysates from HEK293T cells transfected with RC210802 using transfection reagent MegaTran 2.0 (Cat# [TT210002]).