

Product datasheet for RC210801

KIAA0495 (NM_207306) Human Tagged ORF Clone

Product data:

Product Type: Expression Plasmids
Product Name: KIAA0495 (NM_207306) Human Tagged ORF Clone
Tag: Myc-DDK
Symbol: KIAA0495
Synonyms: MGC138189
Mammalian Cell Selection: Neomycin
Vector: pCMV6-Entry (PS100001)
E. coli Selection: Kanamycin (25 ug/mL)
ORF Nucleotide Sequence: >RC210801 ORF sequence
 Red=Cloning site Blue=ORF Green=Tags(s)

TTTTGTAATACGACTCACTATAGGGCGCCGGGAATTCGTCGACTGGATCCGGTACCGAGGAGATCTGCC
GCC**CGATCGCC**

ATGTGTCTTTTGTCCAGCTCAGCCGCTCGGATCTCGCTGCCACCAGCCTTACTGCACACCCGTGCCACC
CGCCCTTGCCCCGTGAGCCTCAGCCTCAGCTCATTCTCTCAGGCAGTCCCAGCATTGGCACGGTACCTCC
TCCCGTGTGGCCACACGTCTGCTCCCTGTCAACCCCTCTGCCATCAGCACCACCACCGACTTG
TCTGCCGGGAGGATGCAACACCATCTGCCTCCACGGCCACCTTCAGTGTTCCTGCTTCCAAGTAA
AGATACCAGCAGTGCCCTCAGAGCAGACCAGCCAGAGTTTTCTGAAGCCTCCCACAGGGTCTCCCCGG
AGGAGGCCGAGATGCTCTCGTGACTTTGGAGCCGGGGTGGCTGGCCACCTTGGCCTGGGATCTTTGGG
GTGGGTTCTGGGAGCCCGCACTGCTGCAGAGTGTGGTGGATGAGAACAGCTGCTGCTTGTGTACGTGG
TGGAGGACCAGCTGTGTGATGTGGAGCAAGCCTTCAGAGCTGAGCATTGGGCCAACACCAGAGTGGTTC
GGGAACAGGATGCAGACATTGTCCTCAACGACCAGCGCACTT

ACGCGTACGCGGCCGCTCGAGCAGAACTCATCTCAGAAGAGGATCTGGCAGCAATGATATCCTGGATT
ACAAGGATGACGACGATAAGGTTTAA

Protein Sequence: >RC210801 protein sequence
 Red=Cloning site Green=Tags(s)

MCLLSSSAASDLAATSLTAHPCHPPLPRQPQQLILSGSPSIGTVPPAVGHSTLLPVNPPAISTTTSDL
SAREDATPSASTGHLVFPVAFQVKIPAVPSEQTSQSFSEASHRVLPGGPRCSRDFGAGVAGHLGLGIFG
VGFGSPALLQSVVDENSCLLYVVEDQLCDVEQAFRAEHLGQHQS GSGTGRHCPQRPAAAL

TRTRPLEQKLISEEDLAANDILDYKDDDDKV



[View online »](#)

Chromatograms: https://cdn.origene.com/chromatograms/mk6374_f06.zip

Restriction Sites: SgfI-MluI

Cloning Scheme:



ACCN: NM_207306

ORF Size: 603 bp

OTI Disclaimer: The molecular sequence of this clone aligns with the gene accession number as a point of reference only. However, individual transcript sequences of the same gene can differ through naturally occurring variations (e.g. polymorphisms), each with its own valid existence. This clone is substantially in agreement with the reference, but a complete review of all prevailing variants is recommended prior to use. [More info](#)

OTI Annotation: This clone was engineered to express the complete ORF with an expression tag. Expression varies depending on the nature of the gene.

Components: The ORF clone is ion-exchange column purified and shipped in a 2D barcoded Matrix tube containing 10ug of transfection-ready, dried plasmid DNA (reconstitute with 100 ul of water).

Reconstitution Method:

1. Centrifuge at 5,000xg for 5min.
2. Carefully open the tube and add 100ul of sterile water to dissolve the DNA.
3. Close the tube and incubate for 10 minutes at room temperature.
4. Briefly vortex the tube and then do a quick spin (less than 5000xg) to concentrate the liquid at the bottom.
5. Store the suspended plasmid at -20°C. The DNA is stable for at least one year from date of shipping when stored at -20°C.

RefSeq: [NM_207306.2](#), [NP_997189.1](#)

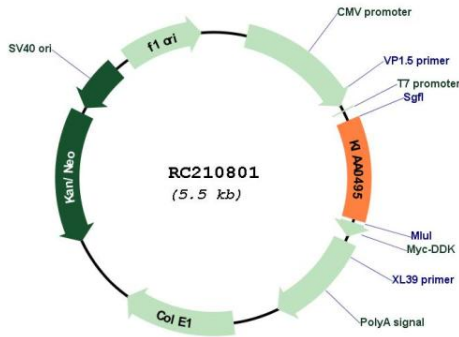
RefSeq Size: 6358 bp

RefSeq ORF: 605 bp

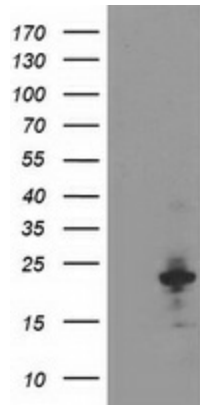
Locus ID: 57212

Cytogenetics: 1p36.32
 MW: 20.6 kDa

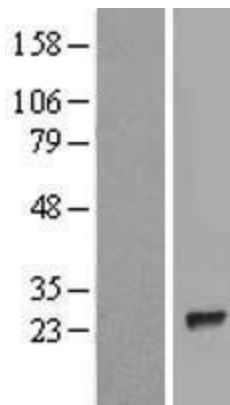
Product images:



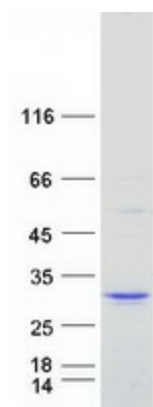
Circular map for RC210801



HEK293T cells were transfected with the pCMV6-ENTRY control (Cat# [PS100001], Left lane) or pCMV6-ENTRY KIAA0495 (Cat# RC210801, Right lane) cDNA for 48 hrs and lysed. Equivalent amounts of cell lysates (5 ug per lane) were separated by SDS-PAGE and immunoblotted with anti-KIAA0495(Cat# [TA503633]). Positive lysates [LY404085] (100ug) and [LC404085] (20ug) can be purchased separately from OriGene.



Western blot validation of overexpression lysate (Cat# [LY404085]) using anti-DDK antibody (Cat# [TA50011-100]). Left: Cell lysates from untransfected HEK293T cells; Right: Cell lysates from HEK293T cells transfected with RC210801 using transfection reagent MegaTran 2.0 (Cat# [TT210002]).



Coomassie blue staining of purified KIAA0495 protein (Cat# [TP310801]). The protein was produced from HEK293T cells transfected with KIAA0495 cDNA clone (Cat# RC210801) using MegaTran 2.0 (Cat# [TT210002]).