

Product datasheet for RC210800

UBE4B (NM_006048) Human Tagged ORF Clone

Product data:

Product Type:	Expression Plasmids
Product Name:	UBE4B (NM_006048) Human Tagged ORF Clone
Tag:	Myc-DDK
Symbol:	UBE4B
Synonyms:	E4; HDNB1; UBOX3; UFD2; UFD2A
Mammalian Cell Selection:	Neomycin
Vector:	pCMV6-Entry (PS100001)
E. coli Selection:	Kanamycin (25 ug/mL)
ORF Nucleotide Sequence:	>RC210800 representing NM_006048 Red=Cloning site Blue=ORF Green=Tags(s)

TTTTGTAATACGACTCACTATAGGGCGGCCGGGAATTCGTCGACTGGATCCGGTACCGAGGAGATCTGCC
GCC**CGCATCGCC**

ATGGAGGAGCTGAGCGCTGATGAGATTCGACGGAGGCGCCTTGCACGACTTGCTGGTGGACAGACCTCTC
AGCCAACCACCCCACTCACCTCTCCCCAGAGGGAGAACCCTCCGGGGCCTCCCATAGCGGCATCAGCCCC
AGGACCCTCTCAGAGTCTTGGTCTCAATGTCCACAACATGACCCAGCTACCTCCCCAATAGGTGCATCA
GGAGTAGCCCATCGAAGCCAGAGCAGTGAAGGAGTCAGTTCTCTCAGCAGCTCGCCCTCTAATAGCCTTG
AAACGCAATCTCAGTCTCTCTCACGTTCCAGAGCATGGATATCGATGGTGTCTCATGTGAGAAAAGCAT
GTCCCAGTGGATGTGGATTCAGGAATTGAAAACATGGAGGTTGATGAAAATGATCGAAGAGAAAAGCGG
AGCCTCAGTGATAAGGAGCCTTCTCGGGCCCTGAAGTGTCTGAAGAGCAGGCCTTACAGCTGGTCTGTA
AGATCTCCGTGTCTCTTGAAGGACCGGGACAGAGATGTCATCTTTCTTTCTTTCTTTCTGCACAGTT
TAAGCAGAACCCAAAAGAAGTATTCTCCGATTTAAGGACTTGATTGGCCAGATTTTAAATGGAAGTGCTA
ATGATGTCCACTCAGACCAGAGATGAAAACCATTTGCCAGTCTGACAGCCACATCACAGCCAATTGCTG
CAGCAGCACGGTCACCAGACAGAAATCTTGTCTAAACTGGCTCCAATCCAGGAACAAGCCCCATGTT
CTGCAGCGTGGCTTCTTTGGTGCCAGCTCTTTGTCTAGTTTGGGAGCCTCTGGTGGAGCAAGTAATTGG
GATTCCTACAGTGACCATTTACCATTGAAACCTGCAAAGAGACAGATATGCTGAACCTCATCGAGT
GTTTCGACCGAGTTGGAATAGAGGAAAAAAGCACCAAGATGTGCAGCCAGCCAGCTCAGCCAGCT
TCTGAGCAACATCCGCTCACAGTGCATATCCATACTGCTTTAGTACTACAAGGCTCCCTAACACAGCCC
AGGTCCTTGACAGCAGCCGTCCTTCTAGTGCCGTATATGCTGTGTAGGAATCTCCCATATGGCTTCATTC
AGGAACTGGTGAAGCACTCACCAGGATGAAGAAGTGTCAAGCAGATATTTATCCCCATTTTACAAGG
CCTGGCTCTTGTGCCAAAGAGTGTCCCTCGACAGTGACTACTTTAAATACCCCTCATGGCACTAGGT
GAGCTCTGTGAAACCAAGTTTGGGAAGACACCCTGTGTGCAATTTGGTTGCTCTTTGCGGTTGTGGT
TGCCGAAATCCTTAAGTCTGGCTGTGGGCGGGAGCTGCAGAGACTCTTACTTAGGGCTTTCTTTAG
CTTCTCAGTCTTGCAGAAGATGATGTTAAAGTGGTTGAAAATACTTCTCAGGGCTGCCATTACCTG



[View online »](#)

GAAAACACTCGTGTGGTTAGCCAATCATTGCAGCATTACTTAGAGCTCGGAAGGCAAGAGCTTTTAAAGA
TTCTGCATAGTATTTTGTAAATGGCGAAACCCGTGAGGCTGCTCTCAGTTACATGGCGGCTGTCGTC
TGCCAATATGAAGAAAGCACAGATGCAGACAGATGATAGATTGGTGTCTACAGATGGATTTATGCTGAAT
TTCTTTGGGTACTGCAGCAGCTAAGTACAAAAATCAAGTTAGAAACAGTTGATCCCACGTATATTTTC
ACCCAAGATGTCGGATTACTCTCCCAATGATGAGACGCGTGTGAATGCAACGATGGAAGATGTGAATGA
CTGGCTGACTGAACTCTATGGCGATCAGCCTCCATTTCTGAGCCGAAATCCCTACGGAGTGCTTCTTT
CTCACCTGCTCACCACCTCTCTATTCTGCCTAGTTGCCGTCGCTATATCCGCAGACTCCGGGCTA
TCCGGGAGCTCAATAGAACTGTAGAAGATTTGAAAAAATGAAAGCCAATGAAAGATTCCCCACTGGC
AACTAGACACCCGCAAAATGCTGAAGCGCTGAAAACTCAGCTTAAAGAACTGGTACGGTGAAGGCTGT
GCTGATGCTGGCTACTTGACGAGAGCTTCTGAGAAGATGTCTGAATTTTTATGGCCTTCTCATTACAGC
TGCTGCTCCGCATCCTGGACCCGCATATCCCGATATAACACTGCCTTAAATTCAGATGCCCCAAGGT
ATTTGCAGCGTTGCTGAGTTTTATGTAGAAGATGTTGCAGAATTTTTATTTTTATTGTACAATACTCT
CCCCAGGCGTTTATGAGCCCTGACTCAGGATATTGTGATGTTCCCTGTTGTGATGTTGTGCAACCAGA
ACTACATCCGAAACCCATATTTGGTGGCCAACTGGTGAAGTCAATGTTTATGACCAACCCTGCTGTTCA
GCCACGAACCCAGAAGTTTTTTGAAATGATTGAGAACCATCCTCTCTCCACCAAGTTGTTGGTACCTTCC
CTGATGAAGTTTTATACAGATGTTGAGCATACCCGAGCCACCAGTGAGTTTTATGACAAGTTCACAAATC
GCTATCATATTAGCACCATTTTTAAAAGCCTTTGGCAAAACATAGCTCACCATGGCACCTTTATGGAGGA
GTTCAACTCCGGGAAGCAGTTTTGTTGCTATATAAACATGTTGATAAACGACACGACGTTTTTGTCTCGAT
GAAAGTCTGGAGTCTCTGAAGCGAATCCATGAAGTGCAGGAAGAGATGAAGAACAAGAACAGTGGGACC
AGTTGCCCGGGATCAGCAGCAGGCTCGTCAGTCTCAGCTTGTCTCAGGATGAGCGTGTGTCCCGCTTTA
CCTCGCCCTGGCCACCGAAACCGTGGACATGTTCCACATCCTCACGAAGCAGGTCCAGAAGCCCTTCTC
AGACCGGAGCTTGGACCCGATTGGCTGCAATGCTGAACCTTAAATCTTCAGCAACTTTGTGGCCCAAGT
GCCGTGACCTGAAAGTTGAAAACCTGAGAAATACGGCTTTGAACCAAGAAGCTGTTGGACCAACTGAC
GGATATTTACTTACAGCTGGACTGTGCTCGGTTCCGCGAAAGCCATTGCTGACGACCAGAGATCCTACAGT
AAGGAATTGTTTGAAGAAGTATTTCAAAGATGCGGAAGCAGGGATCAATCCACAATAGCAATAGAAA
AATTTAAGCTGCTCGCCGAGAAAGTGGAGGAGATAGTGGCCAAGAACGCACGCGCAGAAATCGACTACAG
CGACGCTCCTGATGAGTTCAGAGACCCTCTGATGGACACCCTCATGACAGACCCCGTGGGCTGCCCTCT
GGCACCATCATGGACCGCTCCATCATCTGCGGCACCTGCTCAACTCCCCACGGACCCCTTCAACCGGC
AGACGCTGACAGAGAGCATGCTGGAACCAGTGCCAGAACTGAAAGAGCAGATTCAGGCGTGGATGAGAGA
GAAACAGAACAGCGATCAC

AGCGGACCGACGCGTACGCGGCCGCTCGAGCAGAACTCATCTCAGAAGAGGATCTGGCAGCAAATGATATCC
TGGATTACAAGGATGACGACGATAAGGTTTAA

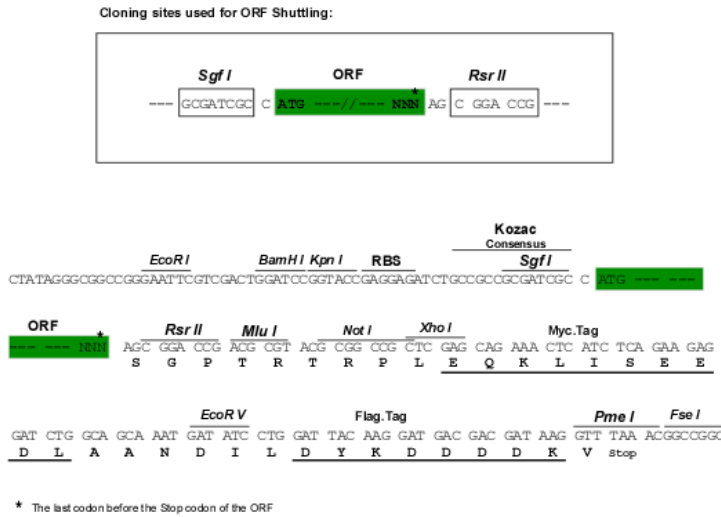
Protein Sequence: >RC210800 representing NM_006048
 Red=Cloning site Green=Tags(s)

```

MEELSADEIRRRRLARLAGGQTSQPTTPLTSPQRENPPGPPIAASAPGPSQSLGLNVHNMTPATSPIGAS
GVAHRSQSSEGVSSLSSSPNSLETQSQSLSRSSQSMIDGVSCSEKSMSQVDVDSGIENMEVDENDRREKR
SLSDKEPSSSGPEVSEEQALQLVCKIFRVSWKDRDRDVI FLSSL SAQFKQNPKEVF SDFKDLIGQILMEVL
MMSTQTRDENPFASLTATSQPIAAAARSPDRNLLLNTGNSNPGTSPMFCVASFSGASSLSSLGASGGASNW
DSYSDHFTIETCKETDMLNYLIECFDRVGIIEKKAPKMCSPAVSQQLSNIRSQCISHTALVLQGSALTQP
RSLQQPSFLVPYMLCRNLPYGFIEQLVTRTHQDEEVFKQIFIPILQGLALAAKECSLSDSYFKYPLMALG
ELCETKFGKTHPVCNLVASLRLWPKSLSPGCGRELQRLSYLGAFFSFSVFAEDDVKVVKEYFSGPAITL
ENTRVVSQSLQHYLELGRQELFKILHSILLNGETREAALSYMAAVVNANMKKAQMOTDRLVSTDFGMLN
FLWVLQQLSTKIKLETVDPTYIFHPRCRITL PNDETRVNATMEDVNDWLT ELYGDQPPFSEPKFTECF
LTLHAHHL SILPSCRRYIRRLRAIRELNRTVEDLKNNESQWKDSLPLATRHREMLKRCCTQLKLVCKAC
ADAGLLDESFLRRCLNFYGLLIQLLLRILDPAYPDITLPLNSDVPKVFAALPEFYVEDVAEFLFFIVQYS
PQALYEPCTQDIVMFLVVMLCNQNYIRNPYLVAKLVEVMFMTNPAVQPRTQKFFEMIENHPLSTKLLVPS
LMKFYTDVEHTGATSEFYDKFTIRYHISTIFKSLWQNI AHHGTFMEEFNSGKQFVRYINMLINDTFFLLD
ESLES LKRIHEVQEEMKNKEQWQQLPRDQQARQSQLAQDERVSRSYLALATETVDMFHILTKVQKPF
RPELGPRLAAMLNFNLLQQLCGPKCRDLKVENPEKYGFEPKLLDQLTDIYLQLDCARFAKAIADDQRSYS
KELFEEVISKMRKAGIKSTIAIEKFKLLAEKV EIVAKNARAEIDYSDAPDEFRDPLMDTMDPVRPLPS
GTIMDRSII LRHLLNSPTDPFNRQTLTESMLEPVPELKEQIQAWMREKQNSDH
  
```

SGP TRRRLEQKLI SEEDLAANDILDYKDDDDK V

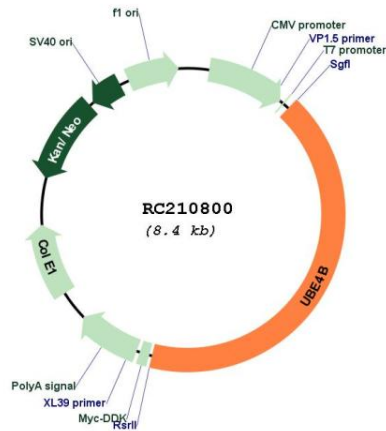
Restriction Sites: SgfI-RsrII
Cloning Scheme:



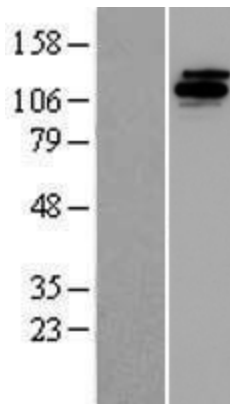
ACCN: NM_006048
ORF Size: 3519 bp

OTI Disclaimer:	The molecular sequence of this clone aligns with the gene accession number as a point of reference only. However, individual transcript sequences of the same gene can differ through naturally occurring variations (e.g. polymorphisms), each with its own valid existence. This clone is substantially in agreement with the reference, but a complete review of all prevailing variants is recommended prior to use. More info
OTI Annotation:	This clone was engineered to express the complete ORF with an expression tag. Expression varies depending on the nature of the gene.
Components:	The ORF clone is ion-exchange column purified and shipped in a 2D barcoded Matrix tube containing 10ug of transfection-ready, dried plasmid DNA (reconstitute with 100 ul of water).
Reconstitution Method:	<ol style="list-style-type: none"> 1. Centrifuge at 5,000xg for 5min. 2. Carefully open the tube and add 100ul of sterile water to dissolve the DNA. 3. Close the tube and incubate for 10 minutes at room temperature. 4. Briefly vortex the tube and then do a quick spin (less than 5000xg) to concentrate the liquid at the bottom. 5. Store the suspended plasmid at -20°C. The DNA is stable for at least one year from date of shipping when stored at -20°C.
RefSeq:	NM_006048.5
RefSeq Size:	5512 bp
RefSeq ORF:	3522 bp
Locus ID:	10277
UniProt ID:	O95155
Cytogenetics:	1p36.22
Domains:	U-box
Protein Pathways:	Ubiquitin mediated proteolysis
MW:	133.1 kDa
Gene Summary:	The modification of proteins with ubiquitin is an important cellular mechanism for targeting abnormal or short-lived proteins for degradation. Ubiquitination involves at least three classes of enzymes: ubiquitin-activating enzymes, or E1s, ubiquitin-conjugating enzymes, or E2s, and ubiquitin-protein ligases, or E3s. This gene encodes an additional conjugation factor, E4, which is involved in multiubiquitin chain assembly. This gene is also the strongest candidate in the neuroblastoma tumor suppressor genes. Alternatively spliced transcript variants encoding distinct isoforms have been found for this gene. [provided by RefSeq, Jul 2008]

Product images:



Circular map for RC210800



Western blot validation of overexpression lysate (Cat# [LY416901]) using anti-DDK antibody (Cat# [TA50011-100]). Left: Cell lysates from untransfected HEK293T cells; Right: Cell lysates from HEK293T cells transfected with RC210800 using transfection reagent MegaTran 2.0 (Cat# [TT210002]).