

Product datasheet for RC210797

Precerebellin (CBLN1) (NM_004352) Human Tagged ORF Clone

Product data:

Product Type: Expression Plasmids
Product Name: Precerebellin (CBLN1) (NM_004352) Human Tagged ORF Clone
Tag: Myc-DDK
Symbol: Precerebellin
Mammalian Cell Selection: Neomycin
Vector: pCMV6-Entry (PS100001)
E. coli Selection: Kanamycin (25 ug/mL)
ORF Nucleotide Sequence: >RC210797 ORF sequence
 Red=Cloning site Blue=ORF Green=Tags(s)

TTTTGTAATACGACTCACTATAGGGCGGCCGGAATTCGTCGACTGGATCCGGTACCGAGGAGATCTGCC
 GCC**CGATCGCC**

ATGCTGGGCGTCTGGAGCTGCTGCTGCTGGGGGCTGCGTGGCTGGCGGGCCCGGCCCGGGCAGAATG
 AGACGGAGCCCATCGTGTGGAGGGCAAGTGCCTGGTGGTGTGCGACTCCAACCCACGTCGACCCAC
 GGGCACTGCCCTGGGCATCTCTGTGCGCTCTGGCAGCGCCAAGGTGGCTTTCTCTGCCATCAGGAGCACC
 AACACGAGCCGTCGGAGATGAGTAATCGCACCATGATCATCTACTTCGACCAGGTAAGTGAACATTG
 GGAACAACCTTTGATTGAGAACGACGACATTTTCATCGCCCGCGCAAAGGGATCTACAGTTTAACTTCCA
 CGTGGTAAAAGTCTACAACAGACAAACCATAACAGGTGAGCCTCATGCTAAACGGGTGGCCGGTGATTTCA
 GCCTTCGCTGGTACCAGGACGTGACCCGGGAGGCCGCAACGAGTCTTAATCCAAATGGAGAAAG
 GCGACCGAGCATACTCAAGCTGGAGCGGGGAACTTGATGGGGGCTGGAAGTACTCGACCTTCTCCGG
 ATTCCTGGTGTTCCTCTC

ACGCGTACGCGGCCGCTCGAGCAGAACTCATCTCAGAAGAGGATCTGGCAGCAATGATATCCTGGATT
 ACAAGGATGACGACGATAAGGTTTAA

Protein Sequence: >RC210797 protein sequence
 Red=Cloning site Green=Tags(s)

MLGVLELLLLGAAWLAGPARGQNETEPIVLEKCLVVCDSDPTGTALGISVRSRSGSAKVAFSAIRST
 NHEPSEMSNRTMIYFDQVLVNIIGNFDSERSTFIAPRKGISYFNHVVKYYNRQTIQVSLMLNGWPVIS
 AFAGDQDVTREASNGVLIQMEKGDRAYLKLERGNLMGGWKYSTFSGFLVFPL

TRTRPLEQKLISEEDLAANDILDYKDDDDKV

Chromatograms: https://cdn.origene.com/chromatograms/mk6382_b01.zip



[View online »](#)

Restriction Sites: SgfI-MluI

Cloning Scheme:



ACCN: NM_004352

ORF Size: 579 bp

OTI Disclaimer: The molecular sequence of this clone aligns with the gene accession number as a point of reference only. However, individual transcript sequences of the same gene can differ through naturally occurring variations (e.g. polymorphisms), each with its own valid existence. This clone is substantially in agreement with the reference, but a complete review of all prevailing variants is recommended prior to use. [More info](#)

OTI Annotation: This clone was engineered to express the complete ORF with an expression tag. Expression varies depending on the nature of the gene.

Components: The ORF clone is ion-exchange column purified and shipped in a 2D barcoded Matrix tube containing 10ug of transfection-ready, dried plasmid DNA (reconstitute with 100 ul of water).

- Reconstitution Method:
1. Centrifuge at 5,000xg for 5min.
 2. Carefully open the tube and add 100ul of sterile water to dissolve the DNA.
 3. Close the tube and incubate for 10 minutes at room temperature.
 4. Briefly vortex the tube and then do a quick spin (less than 5000xg) to concentrate the liquid at the bottom.
 5. Store the suspended plasmid at -20°C. The DNA is stable for at least one year from date of shipping when stored at -20°C.

RefSeq: [NM_004352.4](#)

RefSeq Size: 2435 bp

RefSeq ORF: 582 bp

Locus ID: 869

UniProt ID: [P23435](#)

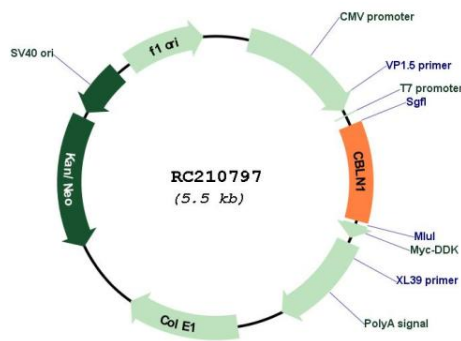
Cytogenetics: 16q12.1

Protein Families: Secreted Protein

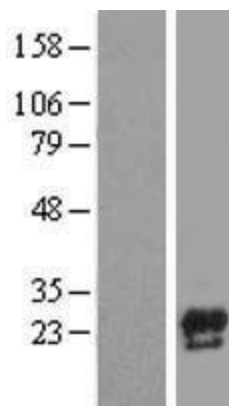
MW: 21.1 kDa

Gene Summary: This gene encodes a cerebellum-specific precursor protein, precerebellin, with similarity to the globular (non-collagen-like) domain of complement component C1qB. Precerebellin is processed to give rise to several derivatives, including the hexadecapeptide, cerebellin, which is highly enriched in postsynaptic structures of Purkinje cells. Cerebellin has also been found in human and rat adrenals, where it has been shown to enhance the secretory activity of this gland. [provided by RefSeq, Aug 2008]

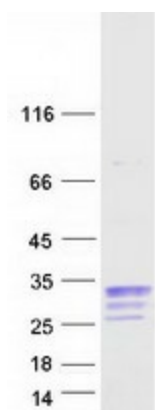
Product images:



Circular map for RC210797



Western blot validation of overexpression lysate (Cat# [LY418047]) using anti-DDK antibody (Cat# [TA50011-100]). Left: Cell lysates from untransfected HEK293T cells; Right: Cell lysates from HEK293T cells transfected with RC210797 using transfection reagent MegaTran 2.0 (Cat# [TT210002]).



Coomassie blue staining of purified CBLN1 protein (Cat# [TP310797]). The protein was produced from HEK293T cells transfected with CBLN1 cDNA clone (Cat# RC210797) using MegaTran 2.0 (Cat# [TT210002]).