

Product datasheet for **RC210796**

CHST3 (NM_004273) Human Tagged ORF Clone

Product data:

Product Type:	Expression Plasmids
Product Name:	CHST3 (NM_004273) Human Tagged ORF Clone
Tag:	Myc-DDK
Symbol:	CHST3
Synonyms:	C6ST; C6ST1; HSD
Mammalian Cell Selection:	Neomycin
Vector:	pCMV6-Entry (PS100001)
E. coli Selection:	Kanamycin (25 ug/mL)



[View online »](#)

ORF Nucleotide Sequence:

>RC210796 ORF sequence
 Red=Cloning site Blue=ORF Green=Tags(s)

TTTTGTAATACGACTCACTATAGGGCGGCCGGAATTCGTCGACTGGATCCGGTACCGAGGAGATCTGCC
 GCC**GCGATCGCC**

ATGGAGAAAGGACTCACTTTGCCCCAGGACTGCCGGACTTTGTGCACAGCCTGAAGATGAGAAGCAAAT
 ACGCCCTTTCTTGGTTTTGTGGTGATAGTTTTGTCTTCATCGAAAAGGAAAATAAAATCATATCAAG
 GGTCTCAGACAAGCTGAAGCAGATTCCCAAGCTCTAGCAGATGCCAACAGCACCAGCCAGCCCTGATC
 TTAGCTGAGAACGCATCTCTTGTCCCTGAGCGAGCTCGATTACGCCTTCTCCAGCTTTCAGAGCCGTC
 TCCGCAACCTCAGCTTGCAGCTGGGCGTGGAGCCAGCCATGGAGGCCGAGGGGAGGAAGAGGAAGAGCA
 GAGAAAGGAGGAGGCCGCCAGACCGGCCGTGGCGGGGCCCGGCCACGTGCTGCTCATGGCCACC
 ACGCGCACCGGCTCCTCGTTCTGGGCGAGTCTTCAACCAGCAGGGCAACATCTTCTACCTTTCGAGC
 CGCTGTGGCACATCGAGCGCACAGTGTCTTCGAGCCGGGGGCCAACGCCGGGCTCGGCCCTGGT
 GTACCGCGACGTGCTCAAGCAGCTTCTCTGTGCGACCTGTACGTGCTGGAGCACTTCATCAGCCGCTG
 CCCGAGGACCACCTGACTCAGTTTATGTTCCGCCGGGGCTCCAGCCGCTCCCTGTGCGAGGACCCGCTCT
 GTACGCCCTTCGTCAGAAGGTCTTCGAGAAGTACCACTGCAAGAACCAGCCGCTGCGGCCCCCTCAACGT
 GACGCTGGCCGCAGAGGCTGCCGCCGCAAGGAGCACATGGCCCTCAAGCGGTGCGCATCCGGCAGCTG
 GAGTTCCTGCAGCCGCTGGCCGAGGACCCCGCTGGACTGCGCGTCATCCAGCTGGTGCAGGACCCCC
 GGGCCGTGCTGGCTCGCGCATGGTGGCCTTCGCCGCAAGTATAAGACCTGGAAGAAGTGGTGGACGA
 CAGAGGCCAGGACGGCTGAGGGAAGAGGAGGTGACGCGGCTGCGGGCAACTGCGAGAGCATCCGCTG
 TCCGCGGAGCTGGGCTGCAGCAGCCCGCTGGCTGCGGGCCGCTACATGCTGGTGCCTACGAGGACG
 TGGCACCGGGCCGCTGCAGAAGGCCCGGAGATGTACCGCTTCGCCGGCATCCCTGACCCCGCAGGT
 GGAAGACTGGATCCAAAAGAACACGCGAGGCCACGACGCGCAGCGGCATCTACTCCACGAGAAGAAC
 TCCTCGGAGCAGTTCGAGAAGTGGCGTTCAGCATGCCCTTCAAGCTGGCCAGGTGGTGCAGGCCGCT
 GCGGCCCTGCCATGCGCCTTTCGGCTACAACTGGCGGGACGCCGCCCTCACCAACCGCTCAGT
 CAGCCTGCTGGAGGAGAGGGCACCTTCTGGTCAAG

ACGCGTACGCGGCCGCTCGAGCAGAACTCATCTCAGAAGAGGATCTGGCAGCAAATGATATCTGGATT
 ACAAGGATGACGACGATAAGGTTTAA

Protein Sequence:

>RC210796 protein sequence
 Red=Cloning site Green=Tags(s)

MEKGLTLPQDCRDFVHSLKMRKYALFLVFFVIVFVIEKENKIIISRVSDKLKQIPQALADANSTDPALI
 LAENASLLSLSELDASFSQLQSRLRNLSQLGVPEPAMEAAGEEEEEQRKEEPPRPVAVAGPRRHVLLMAT
 TRTGSSFVGEFFNQGNIFYLFEPLWHIERTVSFEPGGANAAGSALVYRDVLRKQLFLCDLYVLEHFITPL
 PEDHLTQFMFRRGSSRSLCEDPVCTPFVKKVFEKYHCKNRRCGPLNVTLAAEACRRKHEMALKAVRIRQL
 EFLQPLAEDPRLDLRVIQLVRDPRAVLASRMVAFAGKYKTWKKWLDDEGQDGLREEEVQRLRGNCEIRL
 SAELGLQQPAWLRGRYMLVRYEDVARGPLQKAREMYRFAGIPLTPQVEDWIQKNTQAAHDGSGIYSTQKN
 SSEQFEKWRFSMPFKLAQVVQAACGPAMRLFYKYLARDAALTNRSVSLLEERGTFWVT

TRTRPLEQKLISEEDLAANDILDYKDDDDKV

Chromatograms:

https://cdn.origene.com/chromatograms/mk6592_b12.zip

Restriction Sites:

Sgfl-MluI

Cloning Scheme:


ACCN: NM_004273

ORF Size: 1437 bp

OTI Disclaimer: The molecular sequence of this clone aligns with the gene accession number as a point of reference only. However, individual transcript sequences of the same gene can differ through naturally occurring variations (e.g. polymorphisms), each with its own valid existence. This clone is substantially in agreement with the reference, but a complete review of all prevailing variants is recommended prior to use. [More info](#)

OTI Annotation: This clone was engineered to express the complete ORF with an expression tag. Expression varies depending on the nature of the gene.

Components: The ORF clone is ion-exchange column purified and shipped in a 2D barcoded Matrix tube containing 10ug of transfection-ready, dried plasmid DNA (reconstitute with 100 ul of water).

- Reconstitution Method:**
1. Centrifuge at 5,000xg for 5min.
 2. Carefully open the tube and add 100ul of sterile water to dissolve the DNA.
 3. Close the tube and incubate for 10 minutes at room temperature.
 4. Briefly vortex the tube and then do a quick spin (less than 5000xg) to concentrate the liquid at the bottom.
 5. Store the suspended plasmid at -20°C. The DNA is stable for at least one year from date of shipping when stored at -20°C.

RefSeq: [NM_004273.5](#)

RefSeq Size: 6978 bp

RefSeq ORF: 1440 bp

Locus ID: 9469

UniProt ID: [Q7LGC8](#)

Cytogenetics: 10q22.1

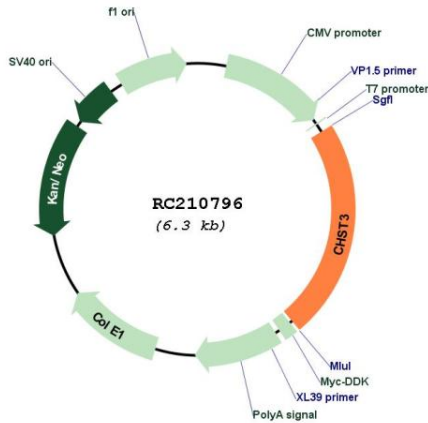
Protein Families: Transmembrane

Protein Pathways: Chondroitin sulfate biosynthesis

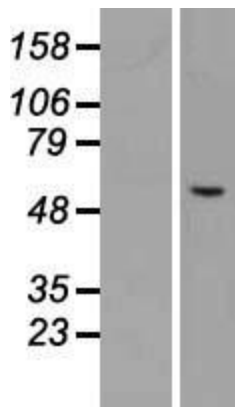
MW: 54.7 kDa

Gene Summary: This gene encodes an enzyme which catalyzes the sulfation of chondroitin, a proteoglycan found in the extracellular matrix and most cells which is involved in cell migration and differentiation. Mutations in this gene are associated with spondylepiphyseal dysplasia and humerospinal dysostosis. [provided by RefSeq, Mar 2009]

Product images:



Circular map for RC210796



Western blot validation of overexpression lysate (Cat# [LY418102]) using anti-DDK antibody (Cat# [TA50011-100]). Left: Cell lysates from untransfected HEK293T cells; Right: Cell lysates from HEK293T cells transfected with RC210796 using transfection reagent MegaTran 2.0 (Cat# [TT210002]).