

Product datasheet for RC210795

CYB561D1 (NM_182580) Human Tagged ORF Clone

Product data:

Product Type: Expression Plasmids
Product Name: CYB561D1 (NM_182580) Human Tagged ORF Clone
Tag: Myc-DDK
Symbol: CYB561D1
Mammalian Cell Selection: Neomycin
Vector: pCMV6-Entry (PS100001)
E. coli Selection: Kanamycin (25 ug/mL)
ORF Nucleotide Sequence: >RC210795 ORF sequence
Red=Cloning site Blue=ORF Green=Tags(s)

TTTTGTAATACGACTCACTATAGGGCGGCCGGAATTCGTCGACTGGATCCGGTACCGAGGAGATCTGCC
GCC**CGATCGCC**

ATGCAGCCCTGGAGGTAGGTCTGGTCCCGCTCCAGCTGGGGAGCCGAGACTGACCCGCTGGCTGCGGA
GAGGCAGTGGGATCTTGGCGCACCTGGTAGCTTTGGGCTTACCATCTTCTGACAGCGCTGTCCCGGCC
AGGAACAGTCTTTCTCCTGGCACCTGTATTCATGGCCTTGGCCTTGCCTCTGCATGGCTGAAGCC
ATCCTACTTTCTCACCTGAACACTCCCTGTTCTTCTTCTGCTCCGAAAAGCACGGATCCGGCTCCACT
GGGCAGGCAGACCCTAGCCATCCTCTGTGCAGCTCTGGGCTGGGCTTCATCATCTCCAGCAGGACCCG
CAGTGAGCTGCCTCATCTGGTGTCTGGCACAGCTGGGTGGGAGCCCTGACACTGCTGGCCACTGCTGTC
CAGGCACTGTGTGGGCTCTGCCTCCTTTGTCCCGGGCAGCCAGGGTCTCAAGGGTGGCTCGCCTCAAGC
TCTACCATCTGACATGTGGACTGGTGGTCTACCTGATGGCTACAGTAACGGTGTCTTGGGCATGTACTC
AGTATGGTTCAGGCCAGATCAAAGGTGCGGCCTGGTACCTGTGCCTGGCACTGCCCGTCTATCCAGCC
CTGGTGATCATGCACCAGATTTCCAGATCCTACTTGCCGAGGAAGAAAATGAAAATG

ACGCGTACGCGGCCGCTCGAGCAGAACTCATCTCAGAAGAGGATCTGGCAGCAAATGATATCCTGGATT
ACAAGGATGACGACGATAAGGTTTAA

Protein Sequence: >RC210795 protein sequence
Red=Cloning site Green=Tags(s)

MQPLEVGLVPAPAGEPRLTRWLRGSGILAHVALGFTIFLTALSRPGTSLFSWHPVFMALAFCLCMAEA
ILLFSPEHSLFFFCSRKARIRLHWAGQTLAILCAALGLGFIISSRTRSELPFLVSWHSWVGALLLATAV
QALCGLCLLCPRAARVSRVARLKLHYLTCGLVVYLMATVTVLLGMYSVWFQAQIKGAAWYLCLALPVYPA
LVIMHQISRSYLPRKKMEM

TRTRPLEQKLISEEDLAANDILDYKDDDDKV



[View online »](#)

Chromatograms: https://cdn.origene.com/chromatograms/mk6592_a07.zip

Restriction Sites: SgfI-MluI

Cloning Scheme:



ACCN: NM_182580

ORF Size: 687 bp

OTI Disclaimer: The molecular sequence of this clone aligns with the gene accession number as a point of reference only. However, individual transcript sequences of the same gene can differ through naturally occurring variations (e.g. polymorphisms), each with its own valid existence. This clone is substantially in agreement with the reference, but a complete review of all prevailing variants is recommended prior to use. [More info](#)

OTI Annotation: This clone was engineered to express the complete ORF with an expression tag. Expression varies depending on the nature of the gene.

Components: The ORF clone is ion-exchange column purified and shipped in a 2D barcoded Matrix tube containing 10ug of transfection-ready, dried plasmid DNA (reconstitute with 100 ul of water).

- Reconstitution Method:**
1. Centrifuge at 5,000xg for 5min.
 2. Carefully open the tube and add 100ul of sterile water to dissolve the DNA.
 3. Close the tube and incubate for 10 minutes at room temperature.
 4. Briefly vortex the tube and then do a quick spin (less than 5000xg) to concentrate the liquid at the bottom.
 5. Store the suspended plasmid at -20°C. The DNA is stable for at least one year from date of shipping when stored at -20°C.

RefSeq: [NM_182580.3](#)

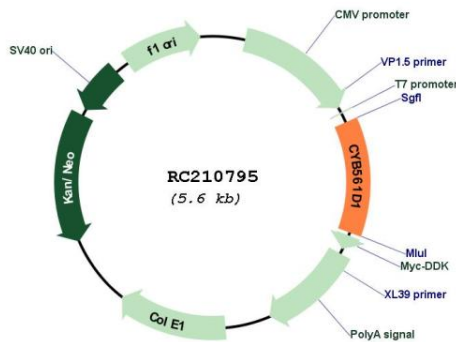
RefSeq Size: 4944 bp

RefSeq ORF: 690 bp

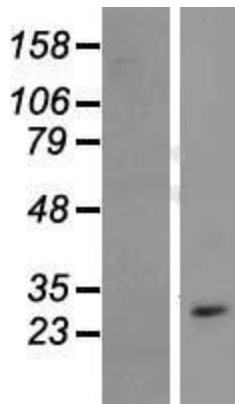
Locus ID: 284613

UniProt ID: Q8N8Q1
Cytogenetics: 1p13.3
Protein Families: Transmembrane
MW: 25.4 kDa
Gene Summary: Probable transmembrane reductase that may use ascorbate as an electron donor and transfer electrons across membranes to reduce monodehydro-L-ascorbate radical and iron cations Fe(3+) in another cellular compartment.[UniProtKB/Swiss-Prot Function]

Product images:



Circular map for RC210795



Western blot validation of overexpression lysate (Cat# [LY405469]) using anti-DDK antibody (Cat# [TA50011-100]). Left: Cell lysates from untransfected HEK293T cells; Right: Cell lysates from HEK293T cells transfected with RC210795 using transfection reagent MegaTran 2.0 (Cat# [TT210002]).