

## Product datasheet for RC210793

### CMTM4 (NM\_181521) Human Tagged ORF Clone

#### Product data:

**Product Type:** Expression Plasmids  
**Product Name:** CMTM4 (NM\_181521) Human Tagged ORF Clone  
**Tag:** Myc-DDK  
**Symbol:** CMTM4  
**Synonyms:** CKLFSF4  
**Mammalian Cell Selection:** Neomycin  
**Vector:** pCMV6-Entry (PS100001)  
**E. coli Selection:** Kanamycin (25 ug/mL)  
**ORF Nucleotide Sequence:** >RC210793 representing NM\_181521  
 Red=Cloning site Blue=ORF Green=Tags(s)

TTTTGTAATACGACTCACTATAGGGCGGCCGGAATTCGTCGACTGGATCCGGTACCGAGGAGATCTGCC  
 GCC**CGATCGCC**

ATGCGGAGCGGCGAGGAGCTGGACGGCTTCGAGGGCGAGGCCTCGAGCACCTCCATGATCTCGGGCGCCA  
 GCAGCCCGTACCAGCCCACCAGCCGGTGAGCCAGCGCCGCGGGCTGGCCGGCTGCGCTGCGACCC  
 CGACTACCTGCGGGCGGCTCGGCCCTCAAGGTCGCCAAGTATCTGGCCCTGATTGCATTCATC  
 TGCATAGAGACCATCATGGCATGCTCCCGTGTGAAGGCCTCTACTTTTTGAGTTGTGAGCTGCAGTG  
 CGTTTGTGGTACTGGCGTCTTGCTGATTATGTTCACTCAACCTGCACATGAGGATCCCCAGATCAA  
 CTGGAATCTGACAGATTTGGTCAACTGGACTCAGCGCTTTCCTTTCTTTATTGCTTCAATCGTACTG  
 GCTGCTTTAAACCATAGAGCCGGAGCAGAAATGCTGCCGTGATATTTGGCTTCTTGAGACTGCGGCAT  
 ATGCAGTGAACACATTCCTGGCAGTGCAGAAATGGAGAGTCAGCGTCCGCCAGCAGACCAATGACTA  
 CATCCGAGCCCGCACGGAGTCCAGGGATGTGGACAGTCGCCCTGAGATCCAGCGCCTGGACACG

**ACGCGT**ACGCGGCCGCTCGAGCAGAACTCATCTCAGAAGAGGATCTGGCAGCAATGATATCCTGGATT  
 ACAAGGATGACGACGATAAGGTTTAA

**Protein Sequence:** >RC210793 representing NM\_181521  
 Red=Cloning site Green=Tags(s)

MRSGEELDGFEGEASSTSMISGASSPYQPTTEPVSRRLAGLRCDPDYLRGALGRLKVAQVILALIAFI  
 CIETIMACSPCEGLYFFEFVSCSAFVVTGVLLIMFSLNLHMRIPQINWNLTDLVNTGLSAFLFFIASIVL  
 AALNHRAGAEIAAVIFGFLETAAYAVNTFLAVQKWRVSVRQQSTNDYIRARTESRDVDSRPEIQRLDT

**TRTRPLEQKLISEEDLAANDILDYKDDDDKV**



[View online »](#)

**Chromatograms:** [https://cdn.origene.com/chromatograms/mg3525\\_e09.zip](https://cdn.origene.com/chromatograms/mg3525_e09.zip)

**Restriction Sites:** SgfI-MluI

**Cloning Scheme:**



**ACCN:** NM\_181521

**ORF Size:** 624 bp

**OTI Disclaimer:** The molecular sequence of this clone aligns with the gene accession number as a point of reference only. However, individual transcript sequences of the same gene can differ through naturally occurring variations (e.g. polymorphisms), each with its own valid existence. This clone is substantially in agreement with the reference, but a complete review of all prevailing variants is recommended prior to use. [More info](#)

**OTI Annotation:** This clone was engineered to express the complete ORF with an expression tag. Expression varies depending on the nature of the gene.

**Components:** The ORF clone is ion-exchange column purified and shipped in a 2D barcoded Matrix tube containing 10ug of transfection-ready, dried plasmid DNA (reconstitute with 100 ul of water).

**Reconstitution Method:**

1. Centrifuge at 5,000xg for 5min.
2. Carefully open the tube and add 100ul of sterile water to dissolve the DNA.
3. Close the tube and incubate for 10 minutes at room temperature.
4. Briefly vortex the tube and then do a quick spin (less than 5000xg) to concentrate the liquid at the bottom.
5. Store the suspended plasmid at -20°C. The DNA is stable for at least one year from date of shipping when stored at -20°C.

**RefSeq:** [NM\\_181521.3](#)

**RefSeq Size:** 8133 bp

**RefSeq ORF:** 627 bp

**Locus ID:** 146223

UniProt ID: [Q8IZR5](#)

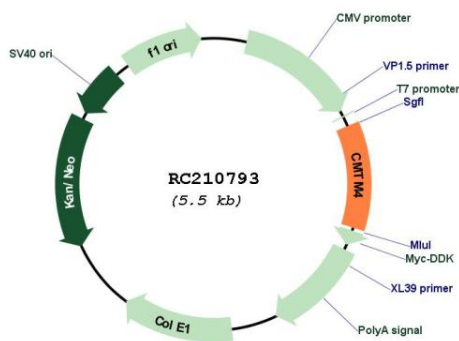
Cytogenetics: 16q21-q22.1

Protein Families: Transmembrane

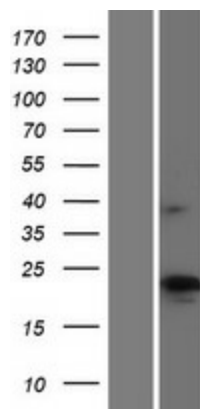
MW: 22.7 kDa

**Gene Summary:** This gene belongs to the chemokine-like factor gene superfamily, a novel family that is similar to the chemokine and the transmembrane 4 superfamilies of signaling molecules. This gene is one of several chemokine-like factor genes located in a cluster on chromosome 16. Alternatively spliced transcript variants encoding different isoforms have been identified. [provided by RefSeq, Jul 2008]

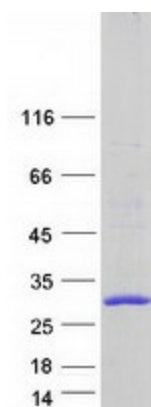
**Product images:**



Circular map for RC210793



Western blot validation of overexpression lysate (Cat# [LY405676]) using anti-DDK antibody (Cat# [TA50011-100]). Left: Cell lysates from untransfected HEK293T cells; Right: Cell lysates from HEK293T cells transfected with RC210793 using transfection reagent MegaTran 2.0 (Cat# [TT210002]).



Coomassie blue staining of purified CMTM4 protein (Cat# [TP310793]). The protein was produced from HEK293T cells transfected with CMTM4 cDNA clone (Cat# RC210793) using MegaTran 2.0 (Cat# [TT210002]).