

Product datasheet for **RC210787**

Tpit (TBX19) (NM_005149) Human Tagged ORF Clone

Product data:

Product Type:	Expression Plasmids
Product Name:	Tpit (TBX19) (NM_005149) Human Tagged ORF Clone
Tag:	Myc-DDK
Symbol:	Tpit
Synonyms:	dj747L4.1; TBS19; TPIT
Mammalian Cell Selection:	Neomycin
Vector:	pCMV6-Entry (PS100001)
E. coli Selection:	Kanamycin (25 ug/mL)



[View online »](#)

ORF Nucleotide Sequence:

>RC210787 ORF sequence
 Red=Cloning site Blue=ORF Green=Tags(s)

TTTTGTAATACGACTCACTATAGGGCGGCCGGGAATTCGTCGACTGGATCCGGTACCGAGGAGATCTGCC
 GCCGCGATCGCC

ATGGCCATGAGTGAGCTGGCACTCGGAAGCCAGCGATGGCACTGTTTCTCATCTGCTCAATGTGGTGG
 AGAGTGAGCTTCAGGCAGGGAGGAAAAAGGCGACCTACGGAGAAGCAACTTCAGATCATCCTGGAGGA
 TGCACCTCTCTGGCAGAGATTCAAGGAAGTCACTAATGAGATGATTGTGACCAAGAAATGGCAGACGGATG
 TTTCCAGTCTAAAGATTAGTGTACAGGGTTGGACCCAATGCCATGTAATCCCTCTGCTGGACTTTG
 TCCCTACGGACAGTACCCGCTGGAAGTACGTCAACGGGGAATGGGTGCCCGCTGGCAAGCCAGAGGTCTC
 CAGCCACAGCTGCGTCTACATTCACCCGACTCCCCAACTTTGGGGCCCACTGGATGAAAGCTCCCATC
 TCCTTCAGCAAAGTGAAGCTGACCAACAAGCTCAATGGAGGCGGGCAGATAATGTTGAATTCTCTGCATA
 AATATGAACCCAGGTTACATAGTGCCTGTTGGAAGTGGCCATCGAATGGTAACAAACTGCTCCTTCCC
 TGAACCCAGTTCATAGCCGTGACTGCCTATCAGAATGAGGAGATAACGGCTCTCAAATCAAGTACAAT
 CCTTTTGCCAAAGCCTTCTTGGATGCCAAGGAAAGAAATCACCTAAGAGAGCTACCGGAGGCTATCTCTG
 AGAGCCAGCATGTGACCTATTCTCACTTGGGAGGCTGGATCTTTTCCAATCCAGATGGAGTGTGCACAGC
 AGGAAACTCCAATTACCAGTATGCCGCTCCTCTGCCTCTGCCTGCTCCCCACACCCACCATTGGCTGTGAG
 CACTATTCGGGTCTCCGAGGACACCGGCAGGCTCCCTACCTTCTGCGTACATGCACAGAAACCATTCTC
 CCTCAGTGAATTTGATAGAAAGTCAAGCAATAATCTGCAAGTTTCTCGGGACCTGACAGCTGGACTTC
 CTTATCCTCCACACCCCATGCCAGCATCCTGTCTGTACCCACACCAACGGACCAATCAATCCAGGGCCC
 AGCCCCACCCGTGCCTGTGGACCATCAGCAATGGTCCGGAGGCCCACTGGGCCAGGCCCGGAGGTGC
 ACGCCAGCACCCAGGAGCATTTCTCCTCGGAAACCCAGCTGTGACTTCAACCCCTTCTGTGCTCTCCAC
 CCAAGCACCCACTTCGGCTGGTGTGGAGGTTCTGGGGGAGCCCTCGCTAACCCAGCATTGCTGTGTCCACC
 TGGACAGCAGTGGCTCGCATCCCTTCGCGGGCTGGGGTGGCCAGGAGCGGGTGGGCACCATTCTCCTT
 CCTCACTGGATGGT

ACGCGTACGCGGCCGCTCGAGCAGAACTCATCTCAGAAGAGGATCTGGCAGCAAATGATATCCTGGATT
 ACAAGGATGACGACGATAAGGTTTAA

Protein Sequence:

>RC210787 protein sequence
 Red=Cloning site Green=Tags(s)

MAMSELGTRKPSDGTVSHLLNVVESELQAGREKGDPEKQLQIILEDAPLWQRFKEVTNEMIVTKNGRRM
 FPVLKISVTGLDPNAMYSLLDFVPTDSHRWKYVNGEWPAGKPEVSSHCVYIHPDSPNFGAHWMKAPI
 SF SKVKLTNKLNGGGQIMLNSLHKYEPQVHIVRVGSAHRMVTNCSFPETQFIAVTAYQNEEITALKIKYN
 PFAKAFLDKERNHLRDVPEAISESQHVTYSHLGGWIFSNPDGVCTAGNSNYQYAAPLPLPAPHTHHGCE
 HYSGLRGHRQAPYPSAYMHRNHSPSVNLI ESSNNLQVFSGPDSWTSLSSTPHASILSVPHTNGPINPGP
 SPYPCLWTISNGAGGPSGPGPEVHASTPGAFLLGNPAVTSPPSVLSTQAPTSAGVEVLGEPSTLSIAVST
 WTAVASHPFAGWGGPGAGGHHSPSSLDG

TRTRPLEQKLISEEDLAANDILDYKDDDDKV

Chromatograms:

https://cdn.origene.com/chromatograms/mk6374_f07.zip

Restriction Sites:

Sgfl-MluI

Cloning Scheme:



ACCN: NM_005149

ORF Size: 1344 bp

OTI Disclaimer: The molecular sequence of this clone aligns with the gene accession number as a point of reference only. However, individual transcript sequences of the same gene can differ through naturally occurring variations (e.g. polymorphisms), each with its own valid existence. This clone is substantially in agreement with the reference, but a complete review of all prevailing variants is recommended prior to use. [More info](#)

OTI Annotation: This clone was engineered to express the complete ORF with an expression tag. Expression varies depending on the nature of the gene.

Components: The ORF clone is ion-exchange column purified and shipped in a 2D barcoded Matrix tube containing 10ug of transfection-ready, dried plasmid DNA (reconstitute with 100 ul of water).

Reconstitution Method:

1. Centrifuge at 5,000xg for 5min.
2. Carefully open the tube and add 100ul of sterile water to dissolve the DNA.
3. Close the tube and incubate for 10 minutes at room temperature.
4. Briefly vortex the tube and then do a quick spin (less than 5000xg) to concentrate the liquid at the bottom.
5. Store the suspended plasmid at -20°C. The DNA is stable for at least one year from date of shipping when stored at -20°C.

Note: Plasmids are not sterile. For experiments where strict sterility is required, filtration with 0.22um filter is required.

RefSeq: [NM_005149.3](#)

RefSeq Size: 2882 bp

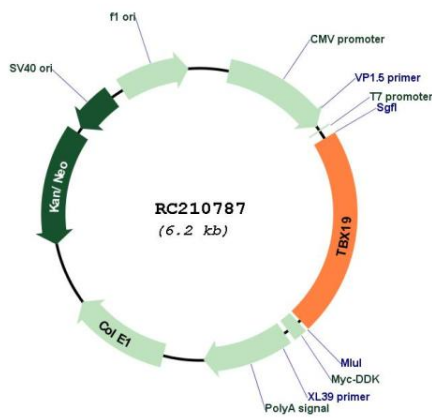
RefSeq ORF: 1347 bp

Locus ID: 9095

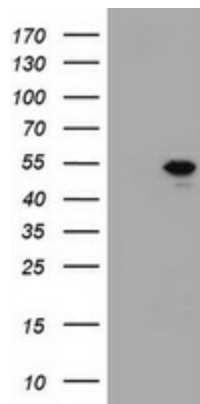
UniProt ID: [O60806](#)
 Cytogenetics: 1q24.2
 MW: 48.2 kDa

Gene Summary: This gene is a member of a phylogenetically conserved family of genes that share a common DNA-binding domain, the T-box. T-box genes encode transcription factors involved in the regulation of developmental processes. Mutations in this gene were found in patients with isolated deficiency of pituitary POMC-derived ACTH, suggesting an essential role for this gene in differentiation of the pituitary POMC lineage. ACTH deficiency is characterized by adrenal insufficiency symptoms such as weight loss, lack of appetite (anorexia), weakness, nausea, vomiting, and low blood pressure. [provided by RefSeq, Jul 2008]

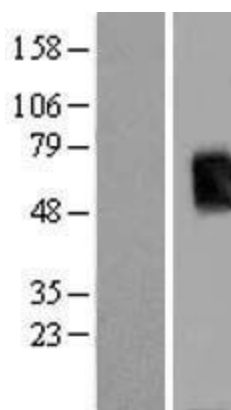
Product images:



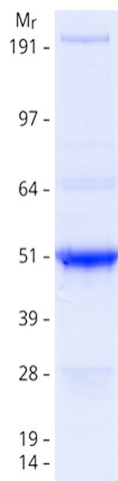
Circular map for RC210787



HEK293T cells were transfected with the pCMV6-ENTRY control (Cat# [PS100001], Left lane) or pCMV6-ENTRY TBX19 (Cat# RC210787, Right lane) cDNA for 48 hrs and lysed. Equivalent amounts of cell lysates (5 ug per lane) were separated by SDS-PAGE and immunoblotted with anti-TBX19 (Cat# [TA800675]). Positive lysates [LY417491] (100ug) and [LC417491] (20ug) can be purchased separately from OriGene.



Western blot validation of overexpression lysate (Cat# [LY417491]) using anti-DDK antibody (Cat# [TA50011-100]). Left: Cell lysates from untransfected HEK293T cells; Right: Cell lysates from HEK293T cells transfected with RC210787 using transfection reagent MegaTran 2.0 (Cat# [TT210002]).



Coomassie blue staining of purified TBX19 protein (Cat# [TP310787]). The protein was produced from HEK293T cells transfected with TBX19 cDNA clone (Cat# RC210787) using MegaTran 2.0 (Cat# [TT210002]).