

Product datasheet for RC210786

LHX2 (NM_004789) Human Tagged ORF Clone

Product data:

Product Type:	Expression Plasmids
Product Name:	LHX2 (NM_004789) Human Tagged ORF Clone
Tag:	Myc-DDK
Symbol:	LHX2
Synonyms:	hLhx2; LH2
Vector:	pCMV6-Entry (PS100001)
E. coli Selection:	Kanamycin (25 ug/mL)
Cell Selection:	Neomycin
ORF Nucleotide Sequence:	>RC210786 ORF sequence Red=Cloning site Blue=ORF Green=Tags(s)

TTTTGTAATACGACTCACTATAGGGCGCCGGGAATTCGTCGACTGGATCCGGTACCGAGGAGATCTGCC
GCC**CGGATCGCC**

ATGCTGTTCCACAGTCTGTGGGCCCGAGGTGCACGGGGTTCATCGACGAGATGGACCGCAGGGCCAAGA
GCGAGGCTCCCGCATCAGCTCCGCCATCGACCGGGCGACACCGAGACGACCATGCCGTCATCAGCAG
TGACCGCGCCGCTGTGCGCCGCTGCGGGGCAAGATCTCGGACCGCTACTACCTGCTGGCGGTGGAC
AAGCAGTGGCACATGCGCTGCCTCAAGTGTGCGAGTGAAGCTCAACCTGGAGTCGGAGCTCACCTGTT
TCAGCAAGGACGGTAGCATCTACTGCAAGGAAGACTACTACAGGCGCTTCTCTGTGCAGCGCTGCGCCC
CTGCCACCTGGGCATCTCGGCCTCGGAGATGGTGTGCGCGCTCGGGACTTGGTTTATCACCTCAACTGC
TTCACGTGCACCACGTGTAACAAGATGTGACCACGGGCGACCACTTCGGCATGAAGGACAGCCTGGTCT
ACTGCCGTTGCACTTCGAGGCGCTGTGACGGGCGAGTACCCCGCACACTTCAACCATGCCGACGTGGC
AGCGGCGCCGCTGCAGCCGCGGCGCCAAGAGCGCGGGGCTGGGCGCAGCAGGGGCCAACCCCTCTGGGT
CTTCCCTACTACAATGGCGTGGCACTGTGCAAGGGGCGGCCGAGGAAACGTAAGAGCCCGGGCCCCG
GTGCGGATCTGGCGCCTACAACGCTGCGCTAAGCTGCAACGAAAACGACGCAGAGCACCTGGACCGTGA
CCAGCCATACCCGAGCAGCCAGAAGACCAAGCGCATGCGCACGTCTTCAAGCACCACCGCTTCGGACC
ATGAAGTCTTACTTTGCCATTAACCACAACCCCGACGCCAAGGACTTGAAGCAGCTCGCGCAAAAGACGG
GCCTCACCAAGCGGGTCTCCAGGTCTGGTTCCAGAACGCCGAGCCAAGTTCAGGCGCAACCTCTTACG
GCAGGAAAACACGGGCGTGGACAAGTCGACAGACGCGGCGCTGCAGACAGGGACGCCATCGGGCCCCGGC
TCGGAGCTCTCAACGCCTCGCTCAGCCCTCCAGCACGCCACCACCCTGACAGACTTGACTAGCCCCA
CCCTGCCAACTGTGACGTCGGTCTTAACCTCTGTGCTGGCAACCTGGAGGGCCATGAGCCTCACAGCCC
CTCACAAACGACTCTTACCAACCTTTTC

ACGCGTACGCGGCCGCTCGAGCAGAAACTCATCTCAGAAGAGGATCTGGCAGCAAATGATATCCTGGATT
ACAAGGATGACGACGATAAGGTTTAA



View online »

Protein Sequence: >RC210786 protein sequence
 Red=Cloning site Green=Tags(s)

MLFHSLSGPEVHGVIDEMDRRAKSEAPAIISSAIDRGDTETTMPSSISSDRAALCAGCGGKISDRYYLLAVD
 KQWHMRLKCCECKLNLESELTCFSKDGSIYCKEDYRRFSVQRCARHLGISASEMVMRARDLVYHLNC
 FTCTTCNKMLTTGDHFGMKDSL VYCRHLFEALLQGEYPAHFNHADVAIAAAAAAAAAAKSAGLGAAGANPLG
 LPYYNGVGTQVQGRPRKRKSPGPGADLAAYNAALSCNENDAHLDRDQYPSSQTKRMRTSFKHHQLRT
 MKSYFAIHNHPDAKDLKQLAQKTGLTKRVLQVWFQNAKAKFRRNLLRQENTGVDKSTDAALQTGTPSGPA
 SELSNASLSPSSTPTTLTDLTSPTLPTVTSVLTSPVGNLEGHEPHSPSQTTLTNLF

TRTRPLEQKLISEEDLAANDILDYKDDDDKV

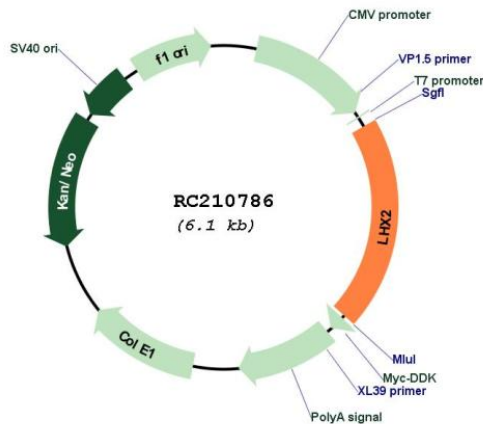
Chromatograms: https://cdn.origene.com/chromatograms/mk6137_b06.zip

Restriction Sites: SgfI-MluI

Cloning Scheme:



Plasmid Map:



ACCN: NM_004789

ORF Size: 1218 bp

OTI Disclaimer: The molecular sequence of this clone aligns with the gene accession number as a point of reference only. However, individual transcript sequences of the same gene can differ through naturally occurring variations (e.g. polymorphisms), each with its own valid existence. This clone is substantially in agreement with the reference, but a complete review of all prevailing variants is recommended prior to use. [More info](#)

OTI Annotation: This clone was engineered to express the complete ORF with an expression tag. Expression varies depending on the nature of the gene.

RefSeq: [NM_004789.4](#)

RefSeq Size: 2416 bp

RefSeq ORF: 1221 bp

Locus ID: 9355

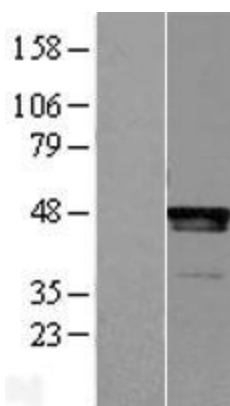
Domains: homeobox, LIM

Protein Families: Transcription Factors

MW: 44.4 kDa

Gene Summary: This gene encodes a protein belonging to a large protein family, members of which carry the LIM domain, a unique cysteine-rich zinc-binding domain. The encoded protein may function as a transcriptional regulator. The protein can recapitulate or rescue phenotypes in *Drosophila* caused by a related protein, suggesting conservation of function during evolution. [provided by RefSeq, Jul 2008]

Product images:



Western blot validation of overexpression lysate (Cat# [LY401508]) using anti-DDK antibody (Cat# [TA50011-100]). Left: Cell lysates from untransfected HEK293T cells; Right: Cell lysates from HEK293T cells transfected with RC210786 using transfection reagent MegaTran 2.0 (Cat# [TT210002]).