

## Product datasheet for RC210781

### Proteinase Activated Receptor 3 (F2RL2) (NM\_004101) Human Tagged ORF Clone

#### Product data:

Product Type:	Expression Plasmids
Product Name:	Proteinase Activated Receptor 3 (F2RL2) (NM_004101) Human Tagged ORF Clone
Tag:	Myc-DDK
Symbol:	Proteinase Activated Receptor 3
Synonyms:	PAR-3; PAR3
Mammalian Cell Selection:	Neomycin
Vector:	pCMV6-Entry (PS100001)
E. coli Selection:	Kanamycin (25 ug/mL)
ORF Nucleotide Sequence:	>RC210781 ORF sequence Red=Cloning site Blue=ORF Green=Tags(s)

TTTTGTAATACGACTCACTATAGGGCGGCCGGAATTCGTCGACTGGATCCGGTACCGAGGAGATCTGCC  
GCC**CGATCGCC**

ATGAAAGCCCTCATCTTTGCAGCTGCTGGCCTCCTGCTTCTGTTGCCACTTTTTGTCAGAGTGGCATGG  
AAAATGATACAAACAACCTGGCAAAGCCAACTTACCCATTAAGACCTTTCTGGAGCTCCCCAAATTC  
TTTTGAAGAGTCCCCTTTCTGCCTTGAAGGCTGGACAGGAGCCACGATTACTGTAAAAATTAAGTGC  
CCTGAAGAAAGTCTTACATCTCCATGTGAAAAATGCTACCATGGGTACCTGACCAGCTCCTTAAGTA  
CTAACTGATACCTGCCATCTACCTCCTGGTGTGTAGTTGGTGTCCCGCCAATGCTGTGACCCTGTG  
GATGCTTTTCTTCAGGACCAGATCCATCTGTACCACTGTATTCTACACCAACCTGGCCATTGCAGATTTT  
CTTTTTGTGTTACATTGCCCTTAAAGATAGCTTATCATCTCAATGGGAACAACCTGGGTATTTGGAGAGG  
TCCTGTGCCGGGCCACCACAGTCATCTTCTATGGCAACATGTAAGTCTCCATTCTGCTCCTTGCCTGCAT  
CAGCATCAACCGCTACCTGGCCATCGTCCATCCTTTCACCTACCGGGGCTGCCAAGCACACCTATGCC  
TTGGTAACATGTGGACTGGTGTGGGCAACAGTTTTCTTATATATGCTGCCATTTTTCATACTGAAGCAGG  
AATATTATCTTGTTCAGCCAGACATCACCACCTGCCATGATGTTCAACAACCTTGGCAGTCCCTCATCTCC  
CTTCCAACCTCTATTACTCATCTCCTTGGCATTCTTTGGATTCTTAATTCATTTGTGCTTATCATCTAC  
TGCTATGCAGCCATCATCCGGACACTTAATGCATACGATCATAGATGGTTGTGGTATGTTAAGCGGAGTC  
TCCTCATCCTTGTGATTTTACCATTTGCTTTGCTCCAAGCAATATTATTCTTATTATCCACCATGCTAA  
CTACTACTACAACAACACTGATGGCTTATATTTTATATATCTCATAGCTTTGTGCCTGGGTAGTCTTAAT  
AGTTGCTTAGATCCATTCTTTATTTTCTCATGTCAAAAACCAGAAATCACTCCACTGCTTACCTTACAA  
AA

**ACGCGT**ACGCGGCCGCTCGAGCAGAAACTCATCTCAGAAGAGGATCTGGCAGCAATGATATCCTGGATT  
ACAAGGATGACGACGATAAGGTTTAA



[View online >](#)

**Protein Sequence:** >RC210781 protein sequence  
Red=Cloning site Green=Tags(s)

MKALIFAAAGLLLLLPTFCQSGMENDTNNLAKPTLPKTFRGAPPNSFEEFPFSALEGWGATITVKIKC  
 PEESASHLHVKNATMGYLTSSLSTKLIPAIYLLVFVVGVPANAVTLWMLFFRTRSICTTVFYTNLAADF  
 LFCVTLPFKIAIYHLNGNNWVFGVLCRATTVIFYGNMYCSILLACISINRYLAIVHPFTYRGLPKHTYA  
 LVTGCLVWATVFLYMLPFFILKQEYYLVQPDITTC HDVHNTCESSPFQLYYFISLAFFGFLIPFLIIY  
 CYAAIIRTLNAYDHRWLWYVKASLLILVIFTICFAPSNIILIIHHANYYYNNTDGLYFIYLIACLGLSLN  
 SCLDPFLYFLMSKTRNHSTAYLTK

TRTRPLEQKLISEEDLAANDILDYKDDDDKV

**Chromatograms:** [https://cdn.origene.com/chromatograms/mk6137\\_a07.zip](https://cdn.origene.com/chromatograms/mk6137_a07.zip)

**Restriction Sites:** SgfI-MluI

**Cloning Scheme:**



\* The last codon before the Stop codon of the ORF

**ACCN:** NM\_004101

**ORF Size:** 1122 bp

**OTI Disclaimer:** The molecular sequence of this clone aligns with the gene accession number as a point of reference only. However, individual transcript sequences of the same gene can differ through naturally occurring variations (e.g. polymorphisms), each with its own valid existence. This clone is substantially in agreement with the reference, but a complete review of all prevailing variants is recommended prior to use. [More info](#)

**OTI Annotation:** This clone was engineered to express the complete ORF with an expression tag. Expression varies depending on the nature of the gene.

**Components:** The ORF clone is ion-exchange column purified and shipped in a 2D barcoded Matrix tube containing 10ug of transfection-ready, dried plasmid DNA (reconstitute with 100 ul of water).

**Reconstitution Method:**

1. Centrifuge at 5,000xg for 5min.
2. Carefully open the tube and add 100ul of sterile water to dissolve the DNA.
3. Close the tube and incubate for 10 minutes at room temperature.
4. Briefly vortex the tube and then do a quick spin (less than 5000xg) to concentrate the liquid at the bottom.
5. Store the suspended plasmid at -20°C. The DNA is stable for at least one year from date of shipping when stored at -20°C.

**Note:** Plasmids are not sterile. For experiments where strict sterility is required, filtration with 0.22um filter is required.

**RefSeq:** [NM\\_004101.4](#)

**RefSeq Size:** 3446 bp

**RefSeq ORF:** 1125 bp

**Locus ID:** 2151

**UniProt ID:** [O00254](#)

**Cytogenetics:** 5q13.3

**Domains:** 7tm\_1

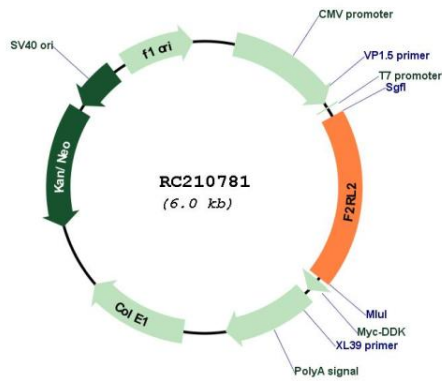
**Protein Families:** Druggable Genome, GPCR, Transmembrane

**Protein Pathways:** Neuroactive ligand-receptor interaction

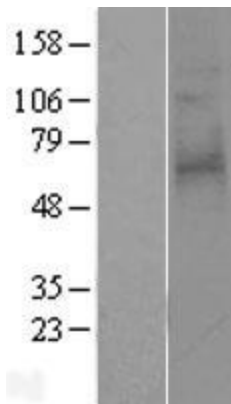
**MW:** 42.5 kDa

**Gene Summary:** This gene encodes a member of the protease-activated receptor (PAR) family which is a subfamily of the seven transmembrane G protein-coupled cell surface receptor family. The encoded protein acts as a cofactor in the thrombin-mediated cleavage and activation of the protease-activated receptor family member PAR4. The encoded protein plays an essential role in hemostasis and thrombosis. Alternate splicing results in multiple transcript variants that encode different isoforms. [provided by RefSeq, Feb 2012]

Product images:



Circular map for RC210781



Western blot validation of overexpression lysate (Cat# [LY401324]) using anti-DDK antibody (Cat# [TA50011-100]). Left: Cell lysates from untransfected HEK293T cells; Right: Cell lysates from HEK293T cells transfected with RC210781 using transfection reagent MegaTran 2.0 (Cat# [TT210002]).