

Product datasheet for **RC210780**

CDKL2 (NM_003948) Human Tagged ORF Clone

Product data:

Product Type:	Expression Plasmids
Product Name:	CDKL2 (NM_003948) Human Tagged ORF Clone
Tag:	Myc-DDK
Symbol:	CDKL2
Synonyms:	KKIAMRE; P56
Mammalian Cell Selection:	Neomycin
Vector:	pCMV6-Entry (PS100001)
E. coli Selection:	Kanamycin (25 ug/mL)



[View online »](#)

ORF Nucleotide Sequence:

>RC210780 ORF sequence
 Red=Cloning site Blue=ORF Green=Tags(s)

TTTTGTAATACGACTCACTATAGGGCGGCCGGAATTCGTCGACTGGATCCGGTACCGAGGAGATCTGCC
 GCC**CGCATCGCC**

ATGAAAAATATGAAACCTGGGTTTGGTTGGAGAAGGGAGTTATGGAATGGTGTGATGAAGTGTAGGAATA
 AAGATACTGGAAGAATTGTGGCCATAAAGAAGTCTTAGAAAAGTACGATTGACAAAATGGTTAAAAAGAT
 TGCAATGCGAGAATCAAGTTACTAAAGCAACTTAGGCATGAAAACCTGGTGAATCTCTGGAAAGTGTG
 AAGAAAAAAACGATGGTACCTAGTCTTTGAATTTGTTGACCACACAATTCTTGATGACTTGGAGCTCT
 TTCCAAATGGACTAGACTACCAAGTAGTCAAAGTATTTGTTTCAGATTATTAATGGAATTGGATTTTG
 TCACAGTCACAATATCATAACAGAGATATAAAGCCAGAGAATATATTAGTCTCCAGTCTGGCCTGTGTC
 AAGCTATGCGATTTGGATTTGCGGAACATTGGCAGCTCCTGGGAGGTTTATACTGATTATGTGGCAA
 CCCGATGGTACAGAGCTCCAGAACTATTGGTTGGTGTGATGCAAGTATGGCAAGGCTGTTGATGTGGGC
 CATTGGTTGTCTGTAAGTAAATGTTTCAATGGGGAAACCCTATTTCTGGAGATTCTGATATTGATCAG
 CTATATCATATTATGATGTGTTAGGTAATCTAATTCGAAGGCATCAGGAGCTTTTTAATAAAAACTCTG
 TGTTTGTCTGGAGTAAGGTTGCCTGAAATCAAGGAAAGAGAACCTCTTGAAGACGCTATCCTAAGCTCTC
 TGAAGTGGTGATAGATTTAGCAAAGAAATGCTTACATATTGACCCCGACAAAAGACCTTCTGTGCTGAG
 CTCCTACACCATGATTTCTTCAAATGGATGGATTTGCTGAGAGGTTTTCCCAAGAACTACAGTAAAAAG
 TACAGAAAAGATGCCAGAAATGTTCTTTATCTAAAAATCCCAAAACAGAAAAGAGGAAAAAGAAAAAGA
 TGATTCCTTAGTTGAAGAAAAGAAAAACCTTGTGGTACAGGATACCAATGCTGATCCCAAAATTAAGGAT
 TATAAACTATTTAAAATAAAAGGCTCAAAAATTGATGGAGAAAAGCTGAAAAGGCAATAGAGCTTCAA
 ATGCCAGCTGTCTCCATGACAGTAGGACAAGCCACAACAAAATAGTGCCTTCAACAAGCCTCAAAGACTG
 CAGCAATGTCAGCGTGGACCACACAAGGAATCCAAGCGTGGCAATTCCCCCACTTACACACAATCTTCT
 GCAGTTGCTCCAGCATTAACTCTGGAATGGGACTGAGACTATACCAATTCAGGTTACAGAGTGGATG
 AGAAAATAAGAAGTGTCTATTCCATTTGTTAAACCGAACAGACATTCCCATCAGGCATTTATAACAT
 TAATGTGACCACATTAGTATCAGGACCTCCCCTGTGAGATGATTCAGGGGCTGATTTGCCTCAAATGGAA
 CACCAGCAC

ACGCGTACGCGGCCGCTCGAGCAGAAACTCATCTCAGAAGAGGATCTGGCAGCAAATGATATCCTGGATT
 ACAAGGATGACGACGATAAGGTTTAA

Protein Sequence:

>RC210780 protein sequence
 Red=Cloning site Green=Tags(s)

MEKYENLGLVGEVSYGMVMKCRNKDTGRIVAIAIKKFLSDDDKMVKKIAMREIKLLKQLRHENLVNLLVVC
 KKKKRWYLVFEFVDHTILDLELFPNGLDYQVQKYLFIINGIGFCHSHNIIHRDIKPENILVSQSGVV
 KLCDFGFARTLAAPGEVYTDYVATRWRAPPELLVGDVKYKAVDVWAIGCLVTEMFMEPLFPGDSIDIQ
 LYHIMMCLGNLIPRHQELFNKNPVFAGVRLPEIKEREPLERRYPKLSEVVIDLAKKCLHIDPDKRPFCAE
 LLHHDFQMDGFAERFSQELQLKVQKDARNVSLSKSQNRKKEKEKDDSLVEERKTLVVQDNTADPKIKD
 YKLFKIKGSKIDGKAKEKGNRASNASCLHDSRSHNKIVPSTSLKDCSNVSDHTRNPSVAIPPLTHNLS
 AVAPSINSGMGTETIPIQGYRVDEKTKKCSIPFVKPNRHSPSGIYNINVTTLVSGPPLSDDSGADLPQME
 HQH

TRTRPLEQKLISEEDLAANDILDYKDDDDKV

Chromatograms:

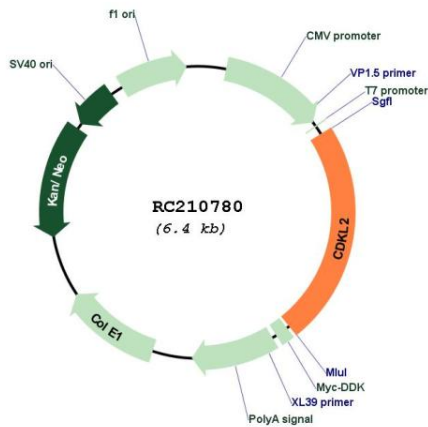
https://cdn.origene.com/chromatograms/mk6374_a11.zip

Restriction Sites:

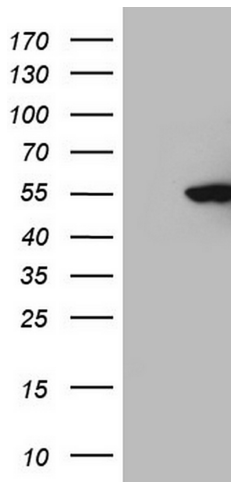
Sgfl-Mlul

UniProt ID: [Q92772](#)
Cytogenetics: 4q21.1
Domains: pkinase, TyrKc, S_TKc
Protein Families: Druggable Genome, Protein Kinase
MW: 56 kDa
Gene Summary: This gene product is a member of a large family of CDC2-related serine/threonine protein kinases. It accumulates primarily in the cytoplasm, with lower levels in the nucleus. [provided by RefSeq, Jul 2008]

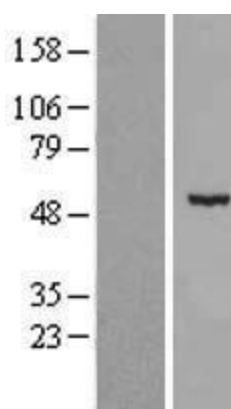
Product images:



Circular map for RC210780



HEK293T cells were transfected with the pCMV6-ENTRY control (Cat# [PS100001], Left lane) or pCMV6-ENTRY CDKL2 (Cat# RC210780, Right lane) cDNA for 48 hrs and lysed. Equivalent amounts of cell lysates (5 ug per lane) were separated by SDS-PAGE and immunoblotted with anti-CDKL2 (Cat# [TA805580]). Positive lysates [LY418330] (100ug) and [LC418330] (20ug) can be purchased separately from OriGene.



Western blot validation of overexpression lysate (Cat# [LY418330]) using anti-DDK antibody (Cat# [TA50011-100]). Left: Cell lysates from untransfected HEK293T cells; Right: Cell lysates from HEK293T cells transfected with RC210780 using transfection reagent MegaTran 2.0 (Cat# [TT210002]).