

Product datasheet for **RC210778**

Coatomer subunit delta (ARCN1) (NM_001655) Human Tagged ORF Clone

Product data:

Product Type:	Expression Plasmids
Product Name:	Coatomer subunit delta (ARCN1) (NM_001655) Human Tagged ORF Clone
Tag:	Myc-DDK
Symbol:	ARCN1
Synonyms:	COPD; SRMMD
Vector:	pCMV6-Entry (PS100001)
E. coli Selection:	Kanamycin (25 ug/mL)
Cell Selection:	Neomycin



[View online »](#)

ORF Nucleotide
Sequence:

>RC210778 ORF sequence
Red=Cloning site Blue=ORF Green=Tags(s)

TTTTGTAATACGACTCACTATAGGGCGGCCGGAATTCGTCGACTGGATCCGGTACCGAGGAGATCTGCC
GCCGCGATCGCC

ATGGTCTGTTGGCAGCAGCGGTCTGCACAAAAGCAGAAAGGCTATTGTTTCTCGACAGTTTGTGGAAA
TGACCCGAACTCGGATTGAGGGCTTATTAGCAGCTTTTCCAAAGCTCATGAACACTGGAAAAACAACATAC
GTTTGTGAAACAGAGAGTGAAGATATGTCTACCAGCCTATGGAGAACTGTATATGGTACTGATCACT
ACCAAAAAACAGCAACATTTTAGAAGATTGGAGACCCTAAGGCTCTTCTCAAGAGTGATCCCTGAATATT
GCCGAGCCTTAGAAGAGAATGAAATATCTGAGCACTGTTTTGATTTGATTTTGTCTTTGATGAAATTGT
CGCACTGGGATACCGGGAGAATGTTAATTGGCACAGATCAGAACCTTACAGAAATGGATTCTCATGAG
GAGAAGGTGTTCCAGAGCCGTCAGAGAGACTCAAGAACGTGAAGCTAAGGCTGAGATGCGTCGTAAGCAA
AGGAATTACAACAGGCCCGAAGAGATGCAGAGAGACAGGGCAAAAAGCACCAGGATTTGGCGGATTTGG
CAGCTCTGCAGTATCTGGAGGCAGCACAGCTGCCATGATCAGAGACCATCATTGAAACTGATAAACCA
AAAGTGGCACCTGCACCAGCCAGGCCTTAGGCCCCAGCAAGGCTTTAAAACCTGGAGCCAAAGGAAAGG
AAGTAGATAACTTTGTGGACAAATTAATCTGAAGGTGAAACCATCATGTCTCTAGTATGGGCAAGCG
TACTTCTGAAGCAACCAAAATGCATGCTCCACCATTAATATGAAAAGTGTACATATGAAGATTGAAGAA
AAGATAACATTAACCTGTGGACGAGACGGAGGATTACAGAATAAGGAGTTGCATGGCATGATCATGCTTA
GGATCTCAGATGACAAGTATGGCCGAATTCGTCTTCATGTGAAAATGAAGATAAGAAAGGGGTGCAGCT
ACAGACCCATCCAATGTGGATAAAAACTTTTCACTGCAGAGTCTCTAATTGGCCTGAAGAATCCAGAG
AAGTCATTTCCAGTCAACAGTGACGTAGGGTGTAAAGTGGAGACTACAACCACAGAGGAATCTTTTA
TTCACATGACAATTAATTGCTGGCCCTCGGAGAGTGGAAATGGCTGTGATGTCAACATAGAATGAGCT
ACAAGAAGATAATTTAGAACTGAATGATGTGGTTATCACCATCCCCTCCCGTCTGGTGTGCGGCCGCT
GTTATCGGTGAGATCGATGGGGAGTATCGACATGACAGTCGACGAAATACCCTGGAGTGGTGCCTGCCTG
TGATTGATGCCAAAAATAAGAGTGGCAGCCTGGAGTTTAGCATTGCTGGGAGCCCAATGACTTCTTCCC
TGTTCAAGTTTCTTTGTCTCCAAGAAAATTACTGTAACATACAGGTTACCAAAGTGACCCAGGTAGAT
GAAACAGCCCCGTAGGTTTTCCACAGAGACCCTTCTAGTGGATAAGTATGAAATCTG

ACGCGTACGCGGCCGCTCGAGCAGAACTCATCTCAGAAGAGGATCTGGCAGCAATGATATCCTGGATT
ACAAGGATGACGACGATAAGGTTTAA

Protein Sequence:

>RC210778 protein sequence
Red=Cloning site Green=Tags(s)

MVLLAAAVCTKAGKAIVSRQFVEMTRTRIEGLLAAPKLMNTGKQHTFVETESVRYVYQPMKLYMVLIT
TKNSNILEDLETLRFLSRVIPEYCRALAEENEISEHCFDLIFAFDEIVALGYRENVNLAQIRTFTEMDSHE
EKVFRVRETQEREAKAEMRRKAKELQQARRDAERQKKAPGFGGSSAVSGGSTAAMITETIETDKP
KVAPAPARPSGSKALKLGAKKEVDNFVDKLGSEGETIMSSSMGKRTSEATKMHAPPINMESVHMKIEE
KITLTCGRDGGGLQNMELHGMIMLRI SDDKYGRIRLHVENEDKKGVLQTHPNVDKLF TAE SLIGLKNPE
KSFVNSDVGLKWRLQTTEESF IPLTINCWPSESGNGCDVNI EYELQEDNLELNDVVIT IPLPSGVGAP
VI GEIDGEYRHDSRRNTLEWCLPVIDAKNKSGSLEFSIAGQPNDFFPVQVSFVSKKNYCNIQVTKVTQVD
GNSPVRFSTETTFLVDKYEIL

TRTRPLEQKLISEEDLAANDILDYKDDDDKV

Chromatograms:

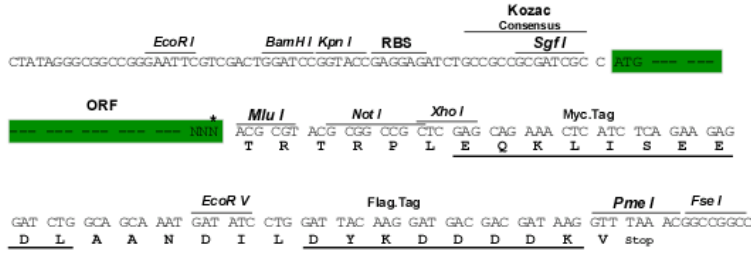
https://cdn.origene.com/chromatograms/mk6137_c12.zip

Restriction Sites:

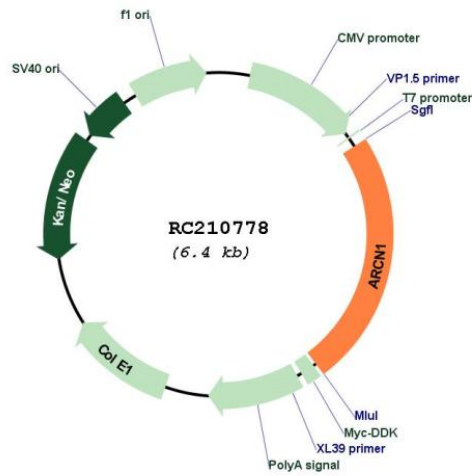
SgfI-MluI

Cloning Scheme:

Cloning sites used for ORF Shutting:

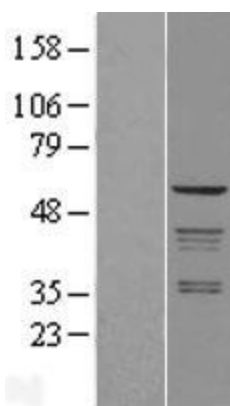


* The last codon before the Stop codon of the ORF

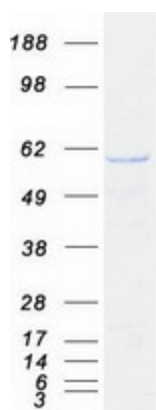
Plasmid Map:

ACCN:	NM_001655
ORF Size:	1533 bp
OTI Disclaimer:	The molecular sequence of this clone aligns with the gene accession number as a point of reference only. However, individual transcript sequences of the same gene can differ through naturally occurring variations (e.g. polymorphisms), each with its own valid existence. This clone is substantially in agreement with the reference, but a complete review of all prevailing variants is recommended prior to use. More info
OTI Annotation:	This clone was engineered to express the complete ORF with an expression tag. Expression varies depending on the nature of the gene.
RefSeq:	NM_001655.5
RefSeq Size:	4032 bp
RefSeq ORF:	1536 bp
Locus ID:	372
Domains:	Adap_comp_sub
MW:	57.2 kDa
Gene Summary:	This gene maps in a region, which include the mixed lineage leukemia and Friend leukemia virus integration 1 genes, where multiple disease-associated chromosome translocations occur. It is an intracellular protein. Archain sequences are well conserved among eukaryotes and this protein may play a fundamental role in eukaryotic cell biology. It has similarities to heat shock proteins and clathrin-associated proteins, and may be involved in vesicle structure or trafficking. [provided by RefSeq, Jul 2008]

Product images:



Western blot validation of overexpression lysate (Cat# [LY400624]) using anti-DDK antibody (Cat# [TA50011-100]). Left: Cell lysates from untransfected HEK293T cells; Right: Cell lysates from HEK293T cells transfected with RC210778 using transfection reagent MegaTran 2.0 (Cat# [TT210002]).



Coomassie blue staining of purified ARCN1 protein (Cat# [TP310778]). The protein was produced from HEK293T cells transfected with ARCN1 cDNA clone (Cat# RC210778) using MegaTran 2.0 (Cat# [TT210002]).