

Product datasheet for **RC210774**

ZNF585B (NM_152279) Human Tagged ORF Clone

Product data:

Product Type:	Expression Plasmids
Product Name:	ZNF585B (NM_152279) Human Tagged ORF Clone
Tag:	Myc-DDK
Symbol:	ZNF585B
Synonyms:	SZFP41
Vector:	pCMV6-Entry (PS100001)
E. coli Selection:	Kanamycin (25 ug/mL)
Cell Selection:	Neomycin



[View online »](#)

ORF Nucleotide
Sequence:

>RC210774 ORF sequence
Red=Cloning site Blue=ORF Green=Tags(s)

TTTTGTAATACGACTCACTATAGGGCGGCCGGGAATTCGTCGACTGGATCCGGTACCGAGGAGATCTGCC
GCCGCGATCGCC

ATGCCAGCTAGTTGGACCTCACCCAGAAATCCTCAGCCCTGGCTCCAGAGGATCATGGCAGCTCCTATG
AGGGATCAGTGTCTTCAGGGATGTGGCTATCGATTTTCAGCAGAGAGAAATGGCGGCACCTGGACCTTTC
TCAGAGAAACCTGTACCGGGATGTGATGCTGGAGACCTACAGCCACCTGCTCTCAGTAGGGTATCAAGTT
CCTAAACCAGAGGTGGTCATGTTGGAGCAAGGAAAGGAACCATGGGCACTGCAGGGTGAGAGGCCACGTC
ACAGCTGCCAGGAGAGAAATATGGGACCATAATCAACATAGAAAAATCATCGTTATAAACAGCTTC
CTCTCAAGATCAAAAAATTTATTCTGGGAAAAATCCTATGAGTGTGCTGAATTTGGAAAGAGCTTCACC
TGGAAAGTCACAGTTCAAGGTACATCTGAAAGTTCCTACAGGAGAAAACTCTATGTATGTATTGAATGTG
GGAGGGCTTTTGTACAGAAGCCAGAATTCATCACACATCAGAAAACCCATATGAGAGAGAAGCCCTATAA
GTGCAATGAATGTGGAAAATCCTTTTTTCAAGTATCGTCTCTTTTCAGGCATCACAGAATTCATACCGGA
GAAAACTATATGAATGTAGTGAATGTGGGAAAGGTTCCCTTATAACTCAGATCTCAGTATACATGAGA
AAATTCATACTGGAGAGAGACACCATGAATGCACTGACTGTGGCAAAGCGTTACACAAAAAGTCCCACT
CAAGATTCATCAGAAAATCCATACAGGCGAGAGATCCTACATCTGATTGAATGCGGGCAGGCCTTCATC
CAGAAAACACAATTGATTGCACACCGAAGAATTCATAGTGGAGAAAAACCATATGAATGCAATAACTGTG
GCAAAATCCTTCATTTCCAAGTCACAACTTCAGGTACATCAACGTGTTACACACAAGAGTGAAGCCCTATAT
ATGTACCGAATATGGGAAGGCTTCAGCAATAATTCCAACCTCATTACACATGAGAAGATTCAAAGTAGA
GAGAAATCTTCCATATGTACTGAGTGTGGGAAGGCCTTACCTACAGGTCAGAGTTGATTATTCATCAGA
GAATTCACACTGGAGAGAAAACCTTATGAATGCAGTGACTGTGGGAGAGCCTTCACAGAAAGTCAGCAT
CACAGTGCATCAGAGAATTCATACAGGAGAAAAATCGTATATATGCATGAAATGTGGACTGGCCTTCATC
CGGAAGGCACACTTGATTACACATCAAATAATTCATACTGGAGAGAAAACCTTATAAATGTGGTCACTGTG
GGAAATTTGTTACTTCCAAGTCACAACTCCATGTTCATAAACGAATTCACACAGGAGAAAAGCCCTATGT
ATGCAATAAATGTGGGAAGGCATTCACCAACCGGTCAAATCTCATTACACATCAGAAAACTCATAACAGGA
GAGAAATCTTATATATGTTCCAATGTGGAAAGGCCTTCACCCAGAGGTCAGACTTGATTACACATCAGA
GAATCCATACTGGGAGAAAGCCTTATGAATGCAATACTTGTGGAAAAGCCTTACTCAGAAGTCAAATCT
TAATATACATCAGAAAATTCACACTGGAGAGAGACAGTATGAATGCCACGAATGTGGGAAAGCCTTCAAC
CAGAAATCAATACTCATTGTTTCATCAGAAAATTCATACAGGAGAGAAAACCTATGTATGCACTGAGTGTG
GAAGAGCTTTCATCCGCAAGTCAAACCTTATTACTCATCAAAGAATTCATCTGGAGAGAAAGCCTTATGA
ATGCAGTGACTGTGGGAAGTCCTTACCTCCAAGTCTCAGCTCCTGGTGCATCAGCCAGTTCACACAGGA
GAGAAAACCTATGTGTGTGCCGAGTGTGGGAAAGCCTTATGTTGGCAGGTCAAATCTCAGTAAACACCAGA
AAACTCATACCGGAGAAAAGCCCTACATTTGTTCTGAATGTGGGAAGACCTTTCGACAGAAGTCAGAGTT
GATTACACATCAGAGAATTCATACTGGAGAGAAAACCTTATGAGTGCAGTGACTGTGGGAAGTCTTTCACT
AAAAATCACAGCTCCAAGTGCATCAGCGAATTCACACTGGAGAGAAAGCCTTACGTGTGTGCTGAGTGTG
GGAAGGCCTTTAGCAACAGGTCCAATTTGAATAAACATCAGACAACACACTGGAGACAAAACCTACAA
GTGTGGCATCTGTGGGAAAGCCTTCGTTTCAGAAATCAGTGTTCAGTGTTCATCAGAGCAGCCACGCT

ACGCGTACGCGGCCGCTCGAGCAGAAAACCTCATCTCAGAAGAGGATCTGGCAGCAAATGATATCCTGGATT
ACAAGGATGACGACGATAAGGTTTAA

Protein Sequence: >RC210774 protein sequence
 Red=Cloning site Green=Tags(s)

MPASWTSPOKSSALAPEDHGSSYEGSVSFRDVAIDFSREEWRHLDL SQRNLYRDVMLETYSHLLSVGQV
 PKPEVVMLEQGKEPWALQGERPRHSCPGKELWDHNQHRKIIGYKPASSQDQKIYSGEKSYECAEFGKSFT
 WKSQFKVHLKVPTGEKLYVICCGRAFVQKPEFITHQKTHMREKPYKCNCEGKSFQVSSLFRHRIHTG
 EKLYECSECGKGFYPNSDL SIHEK IHTGERHHECTDCGKAFTQKSTLKIHQKIHTGERSYICIECGQAFI
 QKTQLIAHRRIHSGEKPYECNCGKSFISKSQLQVHQRVHTRVKPYICTEYGVKVFNNNSNLITHEKIQSR
 EKSSICTECGKAFTYRSELIHQRIHTGEKPYECSDCGRAFTQKSALTVHQRIHTGEKSYICMKCGLAFI
 RKAHLITHQIHTGEKPYKCGHCGKLF TSKSQLHVHKRIHTGEKPYVCNKCGKAF TNRSNLITHQKTHTG
 EKSYSICKGKAFTQRSDLITHQRIHTGEKPYECNTCGKAFTQKSNLNIHQKIHTGERQYECHECGKAFN
 QKSILIVHQKIHTGEKPYVCTECGRAFI RSKSNFITHQRIHTGEKPYECSDCGKSF TSKSQLLVHQPVHTG
 EKPYVCAECGKAFSGRSNL SKHQKTHTGEKPYICSECGKTFRQKSELITHHRIHTGEKPYECSDCGKSF
 KKSQQLVHQRIHTGEKPYVCAECGKAFSNRSNLNKHQTTHTGDKPYKCGICGKGFVQKSVF SVHQSSHA

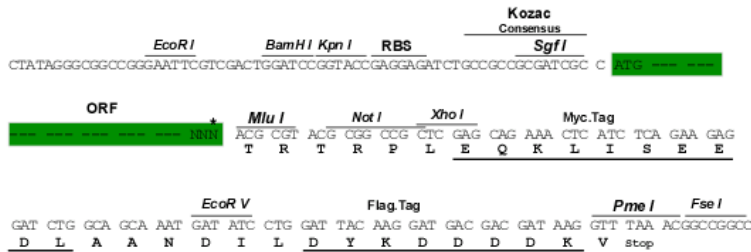
TRTRPLEQKLI SEEDLAANDILDYKDDDDKV

Chromatograms: https://cdn.origene.com/chromatograms/mk6692_a04.zip

Restriction Sites: Sgfl-MluI

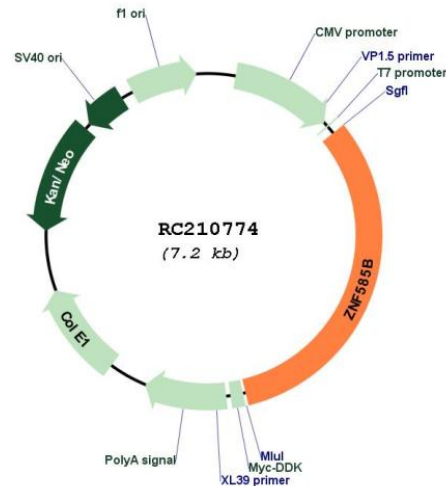
Cloning Scheme:

Cloning sites used for ORF Shuttling:



* The last codon before the Stop codon of the ORF

Plasmid Map:



ACCN: NM_152279

ORF Size: 2307 bp

OTI Disclaimer: The molecular sequence of this clone aligns with the gene accession number as a point of reference only. However, individual transcript sequences of the same gene can differ through naturally occurring variations (e.g. polymorphisms), each with its own valid existence. This clone is substantially in agreement with the reference, but a complete review of all prevailing variants is recommended prior to use. [More info](#)

OTI Annotation: This clone was engineered to express the complete ORF with an expression tag. Expression varies depending on the nature of the gene.

RefSeq: [NM_152279.4](#)

RefSeq Size: 6210 bp

RefSeq ORF: 2310 bp

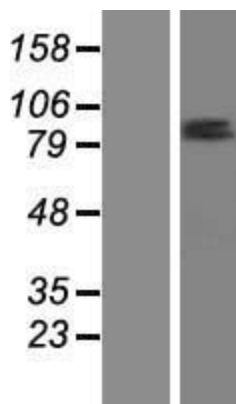
Locus ID: 92285

Domains: KRAB, zf-C2H2

Protein Families: Transcription Factors

MW: 88.1 kDa

Gene Summary: May be involved in transcriptional regulation. [UniProtKB/Swiss-Prot Function]

Product images:

Western blot validation of overexpression lysate (Cat# [LY407699]) using anti-DDK antibody (Cat# [TA50011-100]). Left: Cell lysates from untransfected HEK293T cells; Right: Cell lysates from HEK293T cells transfected with RC210774 using transfection reagent MegaTran 2.0 (Cat# [TT210002]).