

Product datasheet for **RC210771**

NDUFC1 (NM_002494) Human Tagged ORF Clone

Product data:

Product Type: Expression Plasmids
Product Name: NDUFC1 (NM_002494) Human Tagged ORF Clone
Tag: Myc-DDK
Symbol: NDUFC1
Synonyms: KFYI
Mammalian Cell Selection: Neomycin
Vector: pCMV6-Entry (PS100001)
E. coli Selection: Kanamycin (25 ug/mL)
ORF Nucleotide Sequence: >RC210771 ORF sequence
Red=Cloning site Blue=ORF Green=Tags(s)

TTTTGTAATACGACTCACTATAGGGCGGCCGGAATTCGTCGACTGGATCCGGTACCGAGGAGATCTGCC
GCC**CGGATCGCC**

ATGGCGCCGTCGCCCTTGTGCGTCCCCTTTCCCGGCTGCTGGCCCCGCCAGGCTCCCGAGCGGCCCTT
CAGTGCGATCAAAGTTCTACGTGCGAGAGCCGCCGAATGCCAACCTGACTGGCTGAAAGTTGGGTTTAC
CTTGGGCACCACTGTCTTCTTGTGGATCTATCTCATCAAACAACAATGAAGATATTTTAGAGTACAAA
AGAAGAAATGGGCTGGAA

ACGCGTACGCGGCCGCTCGAGCAGAAACTCATCTCAGAAGAGGATCTGGCAGCAAATGATATCCTGGATT
ACAAGGATGACGACGATAAGGTTTAA

Protein Sequence: >RC210771 protein sequence
Red=Cloning site Green=Tags(s)
MAPSALLRPLSRLAPARLPSGPSVRSKFYVREPPNAKPDWLKVGFTLGTTVFLWIYLIKQHNEIDILEYK
RRNGLE

TRTRPLEQKLISEEDLAANDILDYKDDDDKV

Chromatograms: https://cdn.origene.com/chromatograms/mk6377_h12.zip

Restriction Sites: Sgfl-Mlul



[View online »](#)

Cloning Scheme:


ACCN: NM_002494

ORF Size: 228 bp

OTI Disclaimer: The molecular sequence of this clone aligns with the gene accession number as a point of reference only. However, individual transcript sequences of the same gene can differ through naturally occurring variations (e.g. polymorphisms), each with its own valid existence. This clone is substantially in agreement with the reference, but a complete review of all prevailing variants is recommended prior to use. [More info](#)

OTI Annotation: This clone was engineered to express the complete ORF with an expression tag. Expression varies depending on the nature of the gene.

Components: The ORF clone is ion-exchange column purified and shipped in a 2D barcoded Matrix tube containing 10ug of transfection-ready, dried plasmid DNA (reconstitute with 100 ul of water).

- Reconstitution Method:**
1. Centrifuge at 5,000xg for 5min.
 2. Carefully open the tube and add 100ul of sterile water to dissolve the DNA.
 3. Close the tube and incubate for 10 minutes at room temperature.
 4. Briefly vortex the tube and then do a quick spin (less than 5000xg) to concentrate the liquid at the bottom.
 5. Store the suspended plasmid at -20°C. The DNA is stable for at least one year from date of shipping when stored at -20°C.

RefSeq: [NM_002494.3](#), [NP_002485.1](#)

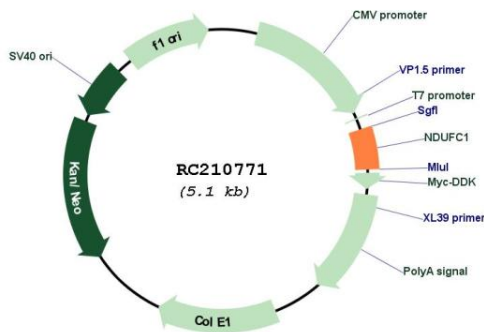
RefSeq Size: 860 bp

RefSeq ORF: 231 bp

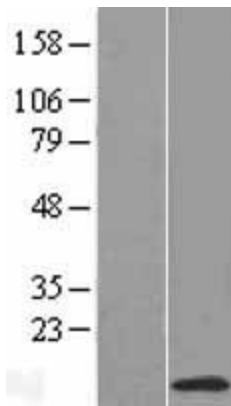
Locus ID: 4717

UniProt ID: [O43677](#)
 Cytogenetics: 4q31.1
 Protein Pathways: Alzheimer's disease, Huntington's disease, Metabolic pathways, Oxidative phosphorylation, Parkinson's disease
 MW: 8.7 kDa
 Gene Summary: The encoded protein is a subunit of the NADH:ubiquinone oxidoreductase (complex I), the first enzyme complex in the electron transport chain located in the inner mitochondrial membrane. Alternative splicing results in multiple transcript variants. [provided by RefSeq, May 2010]

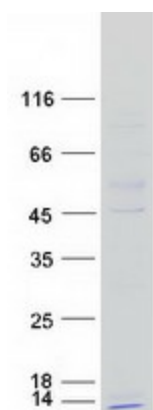
Product images:



Circular map for RC210771



Western blot validation of overexpression lysate (Cat# [LY419294]) using anti-DDK antibody (Cat# [TA50011-100]). Left: Cell lysates from untransfected HEK293T cells; Right: Cell lysates from HEK293T cells transfected with RC210771 using transfection reagent MegaTran 2.0 (Cat# [TT210002]).



Coomassie blue staining of purified NDUFC1 protein (Cat# [TP310771]). The protein was produced from HEK293T cells transfected with NDUFC1 cDNA clone (Cat# RC210771) using MegaTran 2.0 (Cat# [TT210002]).