

Product datasheet for RC210769

BLVRB (NM_000713) Human Tagged ORF Clone

Product data:

Product Type:	Expression Plasmids
Product Name:	BLVRB (NM_000713) Human Tagged ORF Clone
Tag:	Myc-DDK
Symbol:	BLVRB
Synonyms:	BVRB; FLR; HEL-S-10; SDR43U1
Mammalian Cell Selection:	Neomycin
Vector:	pCMV6-Entry (PS100001)
E. coli Selection:	Kanamycin (25 ug/mL)
ORF Nucleotide Sequence:	>RC210769 ORF sequence Red=Cloning site Blue=ORF Green=Tags(s)

TTTTGTAATACGACTCACTATAGGGCGGCCGGAATTCGTCGACTGGATCCGGTACCGAGGAGATCTGCC
GCC**CGATCGCC**

ATGGCCGTCAAGAAGATCGCGATCTTCGGCGCCACTGGCCAGACCGGGCTCACCACCTGGCGCAGGCGG
TGCAAGCAGGTTACGAAGTGACAGTGTGGTGCGGGACTCCTCCAGGCTGCCATCAGAGGGGCCCGGCC
GGCCACGTGGTAGTGGGAGATGTTCTGCAGGCAGCCGATGTGGACAAGACCGTGGCTGGCAGGACGCT
GTCATCGTGTCTGGGCACCCGAATGACCTCAGTCCCAGCAGTGTGTCGAGGGCGCCCGGAACA
TTGTGGCAGCCATGAAGGCTCATGGTGTGGACAAGGTCGTGGCCTGCACCTCGGCTTCTCTGCTCTGGGA
CCCTACCAAGGTGCCCCACGACTGCAGGCTGTGACTGATGACCACATCCGGATGCAAGGTGCTGCGG
GAATCAGGCTGAAGTACGTGGCTGTGATGCCGCCACACATAGGAGACCAGCCACTAACTGGGGCGTACA
CAGTGACCCTGGATGGACGAGGGCCCTCAAGGGTCATCTCCAACATGACCTGGGCCATTTATGCTGCG
CTGCCTCACCACCGATGAGTACGACGGACACAGCACCTACCCCTCCCACAGTACCAG

ACGCGTACGCGGGCCGCTCGAGCAGAACTCATCTCAGAAGAGGATCTGGCAGCAAATGATATCCTGGATT
ACAAGGATGACGACGATAAGGTTTAA

Protein Sequence:	>RC210769 protein sequence Red=Cloning site Green=Tags(s)
-------------------	--

MAVKKIAIFGATGQTGLTTLAQAVQAGYEVTVLVRDSSRLPSEGPRPAHVVDVLAADVDKTVAGQDA
VIVLLGTRNDLSPTTVMSEGARNIVAAMKAHGVDKVVACTSAFLLDWPTKVPRLQAVTDDHIRMHKVLRL
ESGLKYVAVMPPHIGDQPLTGAYTVTLDRGSPSRVISKHDLGHFMLRCLTTDEYDGHSTYPSHQYQ

TRTRPLEQKLISEEDLAANDILDYKDDDDKV



[View online »](#)

Chromatograms: https://cdn.origene.com/chromatograms/mk6005_c08.zip

Restriction Sites: SgfI-MluI

Cloning Scheme:



ACCN: NM_000713

ORF Size: 618 bp

OTI Disclaimer: The molecular sequence of this clone aligns with the gene accession number as a point of reference only. However, individual transcript sequences of the same gene can differ through naturally occurring variations (e.g. polymorphisms), each with its own valid existence. This clone is substantially in agreement with the reference, but a complete review of all prevailing variants is recommended prior to use. [More info](#)

OTI Annotation: This clone was engineered to express the complete ORF with an expression tag. Expression varies depending on the nature of the gene.

Components: The ORF clone is ion-exchange column purified and shipped in a 2D barcoded Matrix tube containing 10ug of transfection-ready, dried plasmid DNA (reconstitute with 100 ul of water).

Reconstitution Method:

1. Centrifuge at 5,000xg for 5min.
2. Carefully open the tube and add 100ul of sterile water to dissolve the DNA.
3. Close the tube and incubate for 10 minutes at room temperature.
4. Briefly vortex the tube and then do a quick spin (less than 5000xg) to concentrate the liquid at the bottom.
5. Store the suspended plasmid at -20°C. The DNA is stable for at least one year from date of shipping when stored at -20°C.

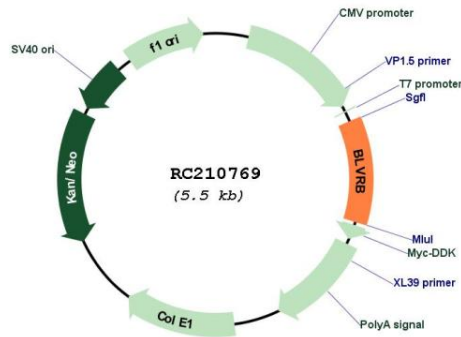
RefSeq: [NM_000713.3](#)

RefSeq Size: 874 bp

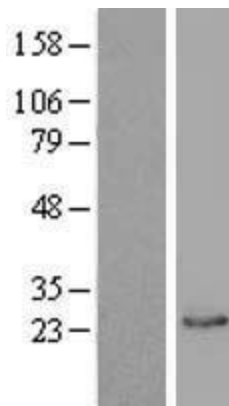
RefSeq ORF: 621 bp

Locus ID: 645

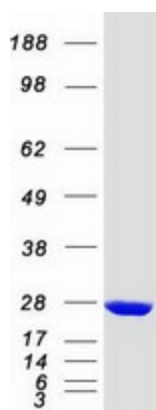
UniProt ID: [P30043](#)
Cytogenetics: 19q13.2
Protein Pathways: Porphyrin and chlorophyll metabolism
MW: 22.1 kDa
Gene Summary: The final step in heme metabolism in mammals is catalyzed by the cytosolic biliverdin reductase enzymes A and B (EC 1.3.1.24).[supplied by OMIM, Jul 2009]

Product images:


Circular map for RC210769



Western blot validation of overexpression lysate (Cat# [LY400239]) using anti-DDK antibody (Cat# [TA50011-100]). Left: Cell lysates from untransfected HEK293T cells; Right: Cell lysates from HEK293T cells transfected with RC210769 using transfection reagent MegaTran 2.0 (Cat# [TT210002]).



Coomassie blue staining of purified BLVRB protein (Cat# [TP310769]). The protein was produced from HEK293T cells transfected with BLVRB cDNA clone (Cat# RC210769) using MegaTran 2.0 (Cat# [TT210002]).