

## Product datasheet for **RC210754**

### TACC3 (NM\_006342) Human Tagged ORF Clone

#### Product data:

Product Type:	Expression Plasmids
Product Name:	TACC3 (NM_006342) Human Tagged ORF Clone
Tag:	Myc-DDK
Symbol:	TACC3
Synonyms:	ERIC-1; ERIC1; maskin; Tacc4
Mammalian Cell Selection:	Neomycin
Vector:	pCMV6-Entry (PS100001)
E. coli Selection:	Kanamycin (25 ug/mL)



[View online »](#)

**ORF Nucleotide Sequence:**

>RC210754 representing NM\_006342  
 Red=Cloning site Blue=ORF Green=Tags(s)

TTTTGTAATACGACTCACTATAGGGCGGCCGGGAATTCGTGACTGGATCCGGTACCGAGGAGATCTGCC  
 GCC**CGGATCGCC**

ATGAGTCTGCAGGTCTTAAACGACAAAAATGTCAGCAATGAAAAAATACAGAAAATTGCGACTTCTGT  
 TTTCCGCCACCAGAAGTTACCGGAAGATCGTCTGTTCTTCTGTGTGTACAGAAAGAAAATGTGCCACCCAA  
 GAACCTGGCCAAAAGCTATGAAGGTGACTTTTCAGACACCTCTGCGGGATCCACAGACGCACAGGATTCTA  
 AGTCTAGCATGGCCAGCAAAGTGGAGTCTTTCACTCAGGATGACACCCCTGGACTGGAAAACCTCAC  
 ACCCGGTCTGGACACAGAAAGAGAACCAACAGCTCATCAAGGAAGTGGATGCCAAAACCTACTCATGGAAT  
 TCTACAGAAACCAGTGGAGGCTGACACCCGACTCTGGGGATGCAAGCCAGCCTTTGGGAGTGGCAGC  
 TCCAGCAAGTCTGGCCAGGTGCCCTGGCTGACCTGGACTGCTCAAGCTTTCCAGAGCCAGGAAGTT  
 CTGAGAACCAAAATGGTGTCTCCAGGAAAAGTGTCTGGCAGCCCTGAGCAAGCCGTGGAGGAAAACCTTAG  
 TTCTATTCTTAGACAGAAGAGTACACCCGCTCTGAGACCCTAGAAGACCCTTGAGGACAGAGTCC  
 CAGCACAAGCGGAGACTCCGCACGGAGCCGAGGAAGAATGCAAAGCGGAGACTCCGCACGGAGCCGAGG  
 AGGAATGCCGGCACGGTGGGTCTGTGCTCCCGCAGCAGTGGCCACTTCGCCTCCTGGTGAATCCCTAA  
 GGAAGCCTGCGGAGGAGCACCCCTGCAGGGTCTGCCTGGCGAAGCCCTGGGCTGCCCTGCGGGTGTGGG  
 ACCCCCGTGCAGCAGATGGCACTCAGACCCCTTACCTGTGCACACACCTCTGCTCCTGAGAGCACAGCC  
 CAACCAACCACCTGGTGGCTGGCAGGGCCATGACCCTGAGTCTCAGGAAGAAGTGGTGCAGGCCAAAAT  
 GGCCAGTCTCGAGGAGCGGACCTGTAAACTAGAATTTGATGTATCTGATGGCGCCACCAGCAAAAGG  
 GCACCCCAACCAAGGAGACTGGGAGAGAGTCCGGCTCAAGCTCCCTTGAGGAAAGCAGCAGTGGAGG  
 AGCAAAAGGCCCGCAGGAGGTGGAGGAGCAGCGGTAGGAGCGGAGCGGGAGAGGACCCCACTGACC  
 AGCTTCTCGGGGCTCTTACCACCTCGACTGGGACAAAATGGATGACCCAAACTCATCCCGTTCCGAGGT  
 GACACCAAGTCTGGTTGCACTGAGGCCAGCCCAAGCCCTGAGACCAGGCTGGGCCAGCCAGCGG  
 CTGAACAGTTGCATGCTGGGCTGCCACGGAGGAGCCAGGTCCCTGTCTGAGCCAGCAGTGCATTGAGC  
 CTCAGCGGAGGACACGCCTGTGGTGCAGTTGGCAGCCGAGACCCCAACAGCAGAGAGCAAGGAGAGGCC  
 TTGAACTCTGCCAGCACCTCGCTTCCACAAGCTGTCCAGGCAGTGGCCAGTGGCCACCCATCAGCAGG  
 GGCAGCCTGCCTTGAGCTGAAAGAGGAGAGCTTCAAGAGACCCGCTGAGGTTCTAGGCACGGGCGCGGA  
 GGTGGATTACCTGGAGCAGTTTGAACCTCCTCGTTTAAAGGAGTCGGCCTTGAGGAAGCAGTCTTATAC  
 CTCAGTTGACCCCTCCTGAGGACAGTCTGTTAGACCAGTCCCGTGGCCACCGAGACCAGCAGCA  
 TGACCGTGCAAATGAGACTCCCTCAGGAGCTCCGCGGAAGCCAAGCTTGTGGAGTTTCGATTTCTTGGG  
 AGCACTGGACATTCTGTGCCAGGCCACCCCAAGGTGTTCCCGCGCTGGGGGCCACCCCTGTCCACC  
 GGACCTATAGTGGACCTGCTCCAGTACAGCCAGAAGACCTGGATGCAGTGGTAAAGCGCACACAGGAGG  
 AGAACCAGGAGCTGAGGAGCAGGTGTGAGGAGCTCCACGGGAAGAACCTGGAACCTGGGAAGATCATGGA  
 CAGGTTGCAAGAGGTTGTGTACCAGGCCATGGAGGAAGTTCAGAAGCAGAAGGAACCTTCCAAAGCTGAA  
 ATCCAGAAAGTTCTAAAAGAAAAAGACCAACTTACCACAGATCTGAACTCCATGGAGAAGTCTTCTCCG  
 ACCTCTTCAAGCGTTTTGAGAAACAGAAAGAGGTGATCGAGGGCTACCGCAAGAACAAGAGTCACTGAA  
 GAAGTCCGTGGAGGATTACCTGGCAAGGATCACCCAGGAGGGCCAGAGGTACCAAGCCCTGAAGGCCAC  
 CGGAGGAGAAGCTGCAGCTGGCAACAGGAGATCGCCAGGTCGGAGCAAGGCCAGCGGAAAGCGT  
 TGGCCCTCCAGGCCAGCTGAGGAAGGAGCAGATGCGCATCCAGTCGCTGGAGAAGACAGTGGAGCAGAA  
 GACTAAAGAGAACGAGGAGCTGACCAGGATCTGCGACGACCTCATCTCCAAGATGGAGAAGATC

**ACGCGT**ACGCGGCCGCTCGAGCAGAACTCATCTCAGAAGAGGATCTGGCAGCAATGATATCTGGATT  
 ACAAGGATGACGACGATAAGGTTTAA

Protein Sequence: >RC210754 representing NM\_006342  
Red=Cloning site Green=Tags(s)

MSLQVLNDKNVSNEKNTENCDFLFSPPEVTGRSSVLRVSQKENVPPKNLAKAMKVTFTPLRDPQTHRIL  
SPSMASKLEAPFTQDDTLGLENSHPVWTQKENQQLIKEVDAKTTHGILQKPVEADTDLLGDASPAFGSGS  
SSKSGPGALADLDCSSSSQSPGSSSENQMVSPGKVSQSPEQAVEENLSSYSLDRRVTPASETLEDPCRTES  
QHKAETPHGAEEECKAETPHGAEEECRHGGVCAPAAVATSPPGAIPKEACGGAPLQGLPGEALGCPAGVG  
TPVPADGTQTLTCAHTSAPESTAPT NHLVAGRAMT LSPQEEVAAGQMASSRSRSGPVKLEFDVSDGATSKR  
APPPRRLGERSGLKPPLRKA AAVRQQKAPQEVEEDDGRSGAGEDPPMPASRGSYHLDWDKMDDPNFIPF GG  
DTKSGCSEAQPPEPETRLGQPAAEQLHAGPATEEPGCLSQQLHSASAEDTPVVQLAAETPTAESKERA  
LNSASTSLPTSCPGSEPVPTHQQGQPALELKEESFRDPAEVLGTGAEVDYLEQFGTSSFKESALRKQSLY  
LKFDPLL RDSPGRPVVATETSSMHGANETPSGRPREAKLVEFDL GALDIPVPGPPP GVPAPGGPPLST  
GP IVDLLQYSQKDLDAVVKATQEENRELRSRCEELHGKNLELGKIMDRFEEVVYQAMEEVQKQKELSKAE  
IQKVLKEKQDLTDLNSMEKSFSDLFRFEKQKEVIEGYRKNEESLKKCVEDYLARITQEGQRYQALKAH  
AEEKLQLANEEIAQVRSKAQAEALALQASLRKEQMRIQSLEKTVEQTKENEELTRICDDLISKMEKI

TRTRPLEQKLISEEDLAANDILDYKDDDDKV

Chromatograms: [https://cdn.origene.com/chromatograms/mk6272\\_e07.zip](https://cdn.origene.com/chromatograms/mk6272_e07.zip)

Restriction Sites: Sgfl-MluI

Cloning Scheme:



ACCN: NM\_006342

ORF Size: 2514 bp

OTI Disclaimer: The molecular sequence of this clone aligns with the gene accession number as a point of reference only. However, individual transcript sequences of the same gene can differ through naturally occurring variations (e.g. polymorphisms), each with its own valid existence. This clone is substantially in agreement with the reference, but a complete review of all prevailing variants is recommended prior to use. [More info](#)

OTI Annotation: This clone was engineered to express the complete ORF with an expression tag. Expression varies depending on the nature of the gene.

Components: The ORF clone is ion-exchange column purified and shipped in a 2D barcoded Matrix tube containing 10ug of transfection-ready, dried plasmid DNA (reconstitute with 100 ul of water).

**Reconstitution Method:**

1. Centrifuge at 5,000xg for 5min.
2. Carefully open the tube and add 100ul of sterile water to dissolve the DNA.
3. Close the tube and incubate for 10 minutes at room temperature.
4. Briefly vortex the tube and then do a quick spin (less than 5000xg) to concentrate the liquid at the bottom.
5. Store the suspended plasmid at -20°C. The DNA is stable for at least one year from date of shipping when stored at -20°C.

**Note:** Plasmids are not sterile. For experiments where strict sterility is required, filtration with 0.22um filter is required.

**RefSeq:** [NM\\_006342.3](#)

**RefSeq Size:** 2788 bp

**RefSeq ORF:** 2517 bp

**Locus ID:** 10460

**UniProt ID:** [Q9Y6A5](#)

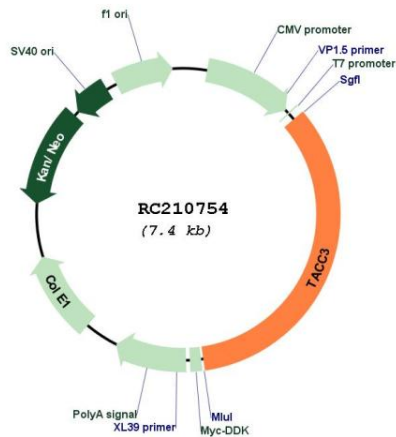
**Cytogenetics:** 4p16.3

**Domains:** TACC

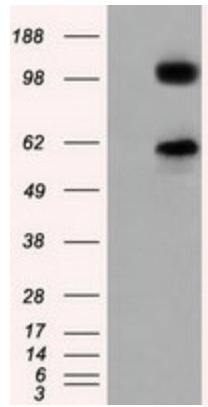
**MW:** 90.2 kDa

**Gene Summary:** This gene encodes a member of the transforming acidic coiled-coil protein family. The encoded protein is a motor spindle protein that may play a role in stabilization of the mitotic spindle. This protein may also play a role in growth a differentiation of certain cancer cells. [provided by RefSeq, Nov 2011]

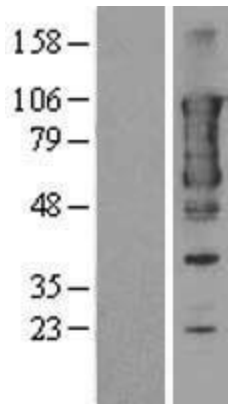
### Product images:



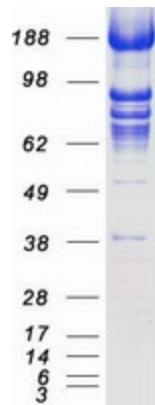
Circular map for RC210754



HEK293T cells were transfected with the pCMV6-ENTRY control (Cat# [PS100001], Left lane) or pCMV6-ENTRY TACC3 (Cat# RC210754, Right lane) cDNA for 48 hrs and lysed. Equivalent amounts of cell lysates (5 ug per lane) were separated by SDS-PAGE and immunoblotted with anti-TACC3 (Cat# [TA501253]). Positive lysates [LY416710] (100ug) and [LC416710] (20ug) can be purchased separately from OriGene.



Western blot validation of overexpression lysate (Cat# [LY416710]) using anti-DDK antibody (Cat# [TA50011-100]). Left: Cell lysates from untransfected HEK293T cells; Right: Cell lysates from HEK293T cells transfected with RC210754 using transfection reagent MegaTran 2.0 (Cat# [TT210002]).



Coomassie blue staining of purified TACC3 protein (Cat# [TP310754]). The protein was produced from HEK293T cells transfected with TACC3 cDNA clone (Cat# RC210754) using MegaTran 2.0 (Cat# [TT210002]).