

Product datasheet for **RC210753**

Coronin 1a (CORO1A) (NM_007074) Human Tagged ORF Clone

Product data:

Product Type:	Expression Plasmids
Product Name:	Coronin 1a (CORO1A) (NM_007074) Human Tagged ORF Clone
Tag:	Myc-DDK
Symbol:	Coronin 1a
Synonyms:	CLABP; CLIPINA; HCORO1; IMD8; p57; TACO
Mammalian Cell Selection:	Neomycin
Vector:	pCMV6-Entry (PS100001)
E. coli Selection:	Kanamycin (25 ug/mL)



[View online »](#)

ORF Nucleotide Sequence:

>RC210753 ORF sequence
 Red=Cloning site Blue=ORF Green=Tags(s)

TTTTGTAATACGACTCACTATAGGGCGGCCGGAATTCGTCGACTGGATCCGGTACCGAGGAGATCTGCC
 GCC**CGGATCGCC**

ATGAGCCGGCAGGTGGTCCGCTCCAGCAAGTTCGCCACGTGTTGGACAGCCGGCAAGGCCGACCAGT
 GCTATGAAGATGTGCGCTCTCACAGACCCTGGGACAGTGGCTTCTGTGCTGTCAACCCTAAGTTTGT
 GGCCCTGATCTGTGAGGCCAGCGGGGAGGGCCCTTCTGGTGTGCCCTGGGCAAGACTGGACGTGTG
 GACAAGAATGCGCCACGGTCTGTGGCCACACAGCCCTGTGCTAGACATCGCCTGGTCCCGCACAATG
 ACAACGTCATTGCCAGTGGCTCCGAGGACTGCACAGTCATGGTGTGGGAGATCCCGGATGGGGCCCTGAT
 GCTGCCCTGCGGGAGCCCGTCTCACCCCTGGAGGGCCACACCAAGCGTGTGGGCATTGTGGCTGGCAC
 ACCACAGCCCAGAACGTGCTGCTCAGTGCAGGTTGTGACAACGTGATCATGGTGTGGGACGTGGGCACTG
 GGGCGGCCATGCTGACACTGGGCCAGAGGTGCACCCAGACAGTCTACAGTGTGGACTGGAGCCGAGA
 TGGAGGCCTCATTGTACCTCTGCCGTGACAAGCGCGTGCGCATCATCGAGCCCGCAAAGGCACTGTC
 GTAGCTGAGAAGGACCGTCCCCACGAGGGGACCCGGCCCGTGCCTGACAGTGTTCGTGTGGAGGGGAAGA
 TCCTGACCACGGGCTTACGCCGATGAGTGAGCGGCAGGTGGCGCTGTGGACACAAAGCACCTGGAGGA
 GCCGCTGTCCCTGCAGGAGCTGGACACCAGCAGCGGTGTCTGTGCCCTTCTTTGACCCTGACACCAAC
 ATCGTCTACCTCTGTGGCAAGGGTGACAGCTCAATCCGGTACTTTGAGATCACTTCCGAGGCCCTTTCC
 TGCACTATCTCTCATGTTCAAGTCCAAGGAGTCCCAGCGGGCATGGGCTACATGCCAAACGTGGCCT
 GGAGGTGAACAAGTGTGAGATCGCCAGGTTCTACAAGCTGCACGAGCGGAGGTGTGAGCCATTGCCATG
 ACAGTGCCTCGAAAGTCGACCTGTTCCAGGAGGACCTGTACCCACCCACCGAGGGCCCGACCTGCC
 TCACGGCTGAGGAGTGGCTGGGGGTGGGATGCTGGGCCCTCCTCATCTCCCTCAAGGATGGTACGT
 ACCCCAAAGAGCCGGGAGCTGAGGGTCAACCGGGCCCTGGACACCGGGCGCAGGAGGGCAGCACAGAG
 GCCAGTGGCACTCCAGCTCGGATGCCGTGTCTCGGCTGGAGGAGGAGATGCGGAAGCTCCAGGCCACGG
 TGCAGGAGCTCCAGAAGCGCTTGGACAGGCTGGAGGAGACAGTCCAGGCCAAG

ACGCGTACGCGGCCGCTCGAGCAGAACTCATCTCAGAAGAGGATCTGGCAGCAAATGATATCTGGATT
 ACAAGGATGACGACGATAAGGTTTAA

Protein Sequence:

>RC210753 protein sequence
 Red=Cloning site Green=Tags(s)

MSRQVVRSSKFRHVFQPAKADQCYEDVRVSQTTWDSGFCVNPKEFVALICEASGGGAFLVPLGKTGRV
 DKNAPTVCGHAPVLDIAWCPHNDNVIASGSEDCVMVWEIPDGGLMLPLREPVVTLLEGHTKRVGIVAWH
 TTAQNVL SAGCDNIMVWDVGTGAAML TLGPEVHPDTIYSVDWSRDGGLICTSCRDKRVRIEPRKGTV
 VAEKDRPHEGTRPVRAVVFVSEGILTTGFSRMSERQVALWDTKHLEEPLSLQELDTSSGVLLPFFDPDTN
 IVYLCGKGDSSIRYFEITSEAPFLHYLSMFSKESQRGMGYMPKRGLVKNKCEIARFYKLGHERRCEPIAM
 TVPRKSDLFQEDLYPPTAGPDPALTAEEWLGGRDAGPLLSLKDGYVPPKSRELVRNRLDTRRRRAAPE
 ASGTPSSDAVSRLEEEMRKLQATVQELQKRLDRLEETVQAK

TRTRPLEQKLISEEDLAANDILDYKDDDDKV

Chromatograms:

https://cdn.origene.com/chromatograms/mk6005_a10.zip

Restriction Sites:

Sgfl-MluI

Cloning Scheme:


ACCN: NM_007074

ORF Size: 1383 bp

OTI Disclaimer: Due to the inherent nature of this plasmid, standard methods to replicate additional amounts of DNA in E. coli are highly likely to result in mutations and/or rearrangements. Therefore, OriGene does not guarantee the capability to replicate this plasmid DNA. Additional amounts of DNA can be purchased from OriGene with batch-specific, full-sequence verification at a reduced cost. Please contact our customer care team at custsupport@origene.com or by calling 301.340.3188 option 3 for pricing and delivery.

The molecular sequence of this clone aligns with the gene accession number as a point of reference only. However, individual transcript sequences of the same gene can differ through naturally occurring variations (e.g. polymorphisms), each with its own valid existence. This clone is substantially in agreement with the reference, but a complete review of all prevailing variants is recommended prior to use. [More info](#)

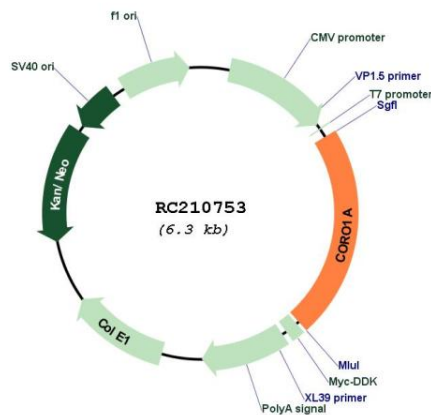
OTI Annotation: This clone was engineered to express the complete ORF with an expression tag. Expression varies depending on the nature of the gene.

Components: The ORF clone is ion-exchange column purified and shipped in a 2D barcoded Matrix tube containing 10ug of transfection-ready, dried plasmid DNA (reconstitute with 100 ul of water).

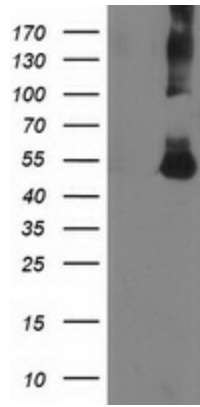
- Reconstitution Method:**
1. Centrifuge at 5,000xg for 5min.
 2. Carefully open the tube and add 100ul of sterile water to dissolve the DNA.
 3. Close the tube and incubate for 10 minutes at room temperature.
 4. Briefly vortex the tube and then do a quick spin (less than 5000xg) to concentrate the liquid at the bottom.
 5. Store the suspended plasmid at -20°C. The DNA is stable for at least one year from date of shipping when stored at -20°C.

Note:	Plasmids are not sterile. For experiments where strict sterility is required, filtration with 0.22um filter is required.
RefSeq:	NM_007074.1
RefSeq Size:	1825 bp
RefSeq ORF:	1386 bp
Locus ID:	11151
UniProt ID:	P31146
Cytogenetics:	16p11.2
Domains:	WD40
MW:	51 kDa
Gene Summary:	This gene encodes a member of the WD repeat protein family. WD repeats are minimally conserved regions of approximately 40 amino acids typically bracketed by gly-his and trp-asp (GH-WD), which may facilitate formation of heterotrimeric or multiprotein complexes. Members of this family are involved in a variety of cellular processes, including cell cycle progression, signal transduction, apoptosis, and gene regulation. Alternative splicing results in multiple transcript variants. A related pseudogene has been defined on chromosome 16. [provided by RefSeq, Sep 2010]

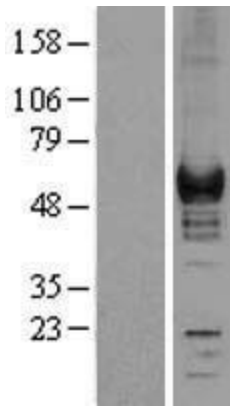
Product images:



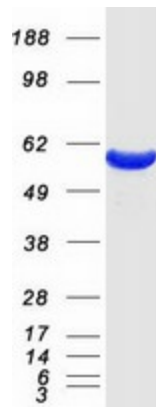
Circular map for RC210753



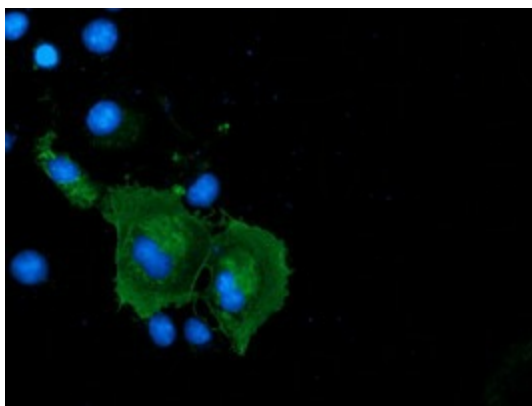
HEK293T cells were transfected with the pCMV6-ENTRY control (Cat# [PS100001], Left lane) or pCMV6-ENTRY CORO1A (Cat# RC210753, Right lane) cDNA for 48 hrs and lysed. Equivalent amounts of cell lysates (5 ug per lane) were separated by SDS-PAGE and immunoblotted with anti-CORO1A (Cat# [TA501429]). Positive lysates [LY402085] (100ug) and [LC402085] (20ug) can be purchased separately from OriGene.



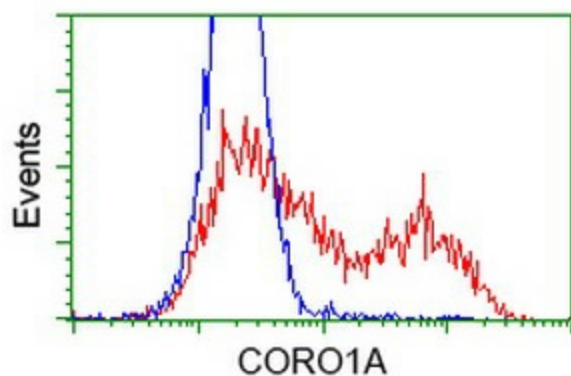
Western blot validation of overexpression lysate (Cat# [LY402085]) using anti-DDK antibody (Cat# [TA50011-100]). Left: Cell lysates from untransfected HEK293T cells; Right: Cell lysates from HEK293T cells transfected with RC210753 using transfection reagent MegaTran 2.0 (Cat# [TT210002]).



Coomassie blue staining of purified CORO1A protein (Cat# [TP310753]). The protein was produced from HEK293T cells transfected with CORO1A cDNA clone (Cat# RC210753) using MegaTran 2.0 (Cat# [TT210002]).



Anti-CORO1A mouse monoclonal antibody (TA501429) immunofluorescent staining of COS7 cells transiently transfected by pCMV6-ENTRY CORO1A (RC210753).



HEK293T cells transfected with either RC210753 overexpress plasmid (Red) or empty vector control plasmid (Blue) were immunostained by anti-CORO1A antibody (TA501429), and then analyzed by flow cytometry.