

Product datasheet for **RC210751**

HSF2 (NM_004506) Human Tagged ORF Clone

Product data:

Product Type:	Expression Plasmids
Product Name:	HSF2 (NM_004506) Human Tagged ORF Clone
Tag:	Myc-DDK
Symbol:	HSF2
Synonyms:	HSF 2; HSTF 2
Mammalian Cell Selection:	Neomycin
Vector:	pCMV6-Entry (PS100001)
E. coli Selection:	Kanamycin (25 ug/mL)



[View online »](#)

ORF Nucleotide Sequence:

>RC210751 ORF sequence
 Red=Cloning site Blue=ORF Green=Tags(s)

TTTTGTAATACGACTCACTATAGGGCGGCCGGAATTCGTCGACTGGATCCGGTACCGAGGAGATCTGCC
 GCC**CGGATCGCC**

ATGAAGCAGAGTTCGAACGTGCCGGCTTCTCAGCAAGCTGTGGACGCTTGTGGAGGAAACCCACACTA
 ACGAGTTCATCACCTGGAGCCAGAATGGCCAAAGTTTTCTGGTCTTGATGAGCAACGATTTGCAAAAGA
 AATTCTTCCCAAATATTTCAAGCACAATATATGGCAAGCTTTGTGAGGCAACTGAATATGTATGGTTTC
 CGTAAAGTAGTACATATCGACTCTGGAATTGTAAGCAAGAAAGAGATGGTCTGTAGAATTTAGCATC
 CTTACTTCAAACAAGGACAGGATGACTTGTGGAGAACATTAAGGAAGGTTTCATCTTCAAACCAGA
 AGAAAATAAAATTCGTCAGGAAGATTTAACAAAAATTATAAGTAGTGCTCAGAAGTTTCAGATAAACAG
 GAAACTATTGAGTCCAGGCTTTCTGAATTAAGGAAGTGAAGTCCCTTTGGAAGGAGGTGCAGAAT
 TACGAGCAAAGCATGCACAACAGCAACAAGTTATTCGAAAGATTGTCCAGTTTATTGTTACATTGGTTCA
 AAATAACCAACTTGTGAGTTTAAACGTAAAAGGCCTCTACTTCTAAACACTAATGGAGCCAAAAGAAG
 AACCTGTTTCAGCACATAGTCAAAGAACCAACTGATAATCATCATATAAAGTTCACACAGTAGGACTG
 AAGGTTTAAAGCCAAGGGAGAGGATTTAGATGACATCATTATTTATGATGTTACTGATGATAATGCAGA
 TGAAGAAAATATCCCAGTTATTCAGAAACTAATGAGGATGTTATATCTGATCCCTCCAAGTGTAGCCAG
 TACCCTGATATTGTCATCGTTGAAGATGACAATGAAGATGAGTATGCACCTGTCATTAGAGTGGAGAGC
 AGAATGAACCAGCCAGAGAATCCCTAAGTTCAGGCAGTGTGGCAGCAGCCCTCATGTCTAGTGTCTGT
 CCAGCTAAATGGCTCATCCAGTCTGACCTCAGAAGATCCAGTACCAGTATGAGTATCCATTTTGAATGAT
 AACATCAATCTTTGGGAAAGGTTGAGCTGTTGGATTATCTTGACAGTATTGACTGCAGTTTAGAGGACT
 TCCAGGCCATGCTATCAGGAAGACAATTTAGCATAGACCAGATCTCCTGGTTGATCTTTTCACTGTTTC
 TGTGCAGATGAATCCACAGATTACATCAATAATACAAAATCTGAGAATAAGGATTAGAACTACCAAG
 AACAAATGTAGTTCAGCCAGTTTCGGAAGAGGGAAGAAAATCTAAATCCAACAGATAAGCAGCTTATCC
 AGTATACCGCCTTCCACTTCTTGCATTCTCGATGGGAACCCTGCTTCTTCTGTTGAACAGGCGAGTAC
 AACAGCATCATCAGAAGTTTGTCTCTGTAGATAAACCCATAGAAGTTGATGAGCTTCTGGATAGCAGC
 CTAGACCAGAACCAACCAAGTAAGCTTGTTCGCTGGAGCCATTGACTGAAGCTGAAGCTAGTGAAG
 CTACACTGTTTTATTTATGTGAAGTCTGCTCCTGCACCTCTGGATAGTATGCCACTTTTAGATAGC

ACGCGTACGCGGCCGCTCGAGCAGAACTCATCTCAGAAGAGGATCTGGCAGCAAATGATATCCTGGATT
 ACAAGGATGACGACGATAAGGTTTAA

Protein Sequence:

>RC210751 protein sequence
 Red=Cloning site Green=Tags(s)

MKQSSNVP AFL SKLWTLVEETHNEFITWSQNGQSFLVLDEQRF AKEILPKYFKHNNMASFVRQLNMYGF
 RKVVHIDSGIVKQERDGPVEFQHPYFKQGQD LLENIKRKVSSSKPEENKIRQEDLTKIISSAQKVQIKQ
 ETIESR LSELKSENE SLWKEVSELRAKHAQQQVIRKIVQFIVTLVQNNQLVSLKRKRPLLLNTNGAQKK
 NLFQHIVKEPTDNHHHKVPHSRTEGLKPRERISDDIIYDVTDDNADEENIPVIPETNEDVISDPSNCSQ
 YPDIVIVEDDNEDEYAPVIQSGEQNEPARESLSSGSDGSSPLMSSAVQLNGSSSLTSEDPTVMMDSILND
 NINLLGKVELLDYLDSDCSLEDFQAMLSGRQFSIDPDLLVDFLTSSVQMNPTDYINNTKSENKGLLETK
 NNVVQPVSEGRKSKSKPKQLIQYTAFLPLAFLDGNP ASSVEQASTTASSEVLSSVDKPIEVDELDDSS
 LDPEPTQSKLVRLEPLTEAEASEATLFYLC LAPAPLDSMPLDSS

TRTRPLEQKLISEEDLAANDILDYKDDDDKV

Chromatograms:

https://cdn.origene.com/chromatograms/mk6133_a04.zip

Restriction Sites:

SgfI-MluI

Cloning Scheme:


ACCN: NM_004506

ORF Size: 1608 bp

OTI Disclaimer: The molecular sequence of this clone aligns with the gene accession number as a point of reference only. However, individual transcript sequences of the same gene can differ through naturally occurring variations (e.g. polymorphisms), each with its own valid existence. This clone is substantially in agreement with the reference, but a complete review of all prevailing variants is recommended prior to use. [More info](#)

OTI Annotation: This clone was engineered to express the complete ORF with an expression tag. Expression varies depending on the nature of the gene.

Components: The ORF clone is ion-exchange column purified and shipped in a 2D barcoded Matrix tube containing 10ug of transfection-ready, dried plasmid DNA (reconstitute with 100 ul of water).

Reconstitution Method:

1. Centrifuge at 5,000xg for 5min.
2. Carefully open the tube and add 100ul of sterile water to dissolve the DNA.
3. Close the tube and incubate for 10 minutes at room temperature.
4. Briefly vortex the tube and then do a quick spin (less than 5000xg) to concentrate the liquid at the bottom.
5. Store the suspended plasmid at -20°C. The DNA is stable for at least one year from date of shipping when stored at -20°C.

RefSeq: [NM_004506.4](#)

RefSeq Size: 2697 bp

RefSeq ORF: 1611 bp

Locus ID: 3298

UniProt ID: [Q03933](#)

Cytogenetics: 6q22.31

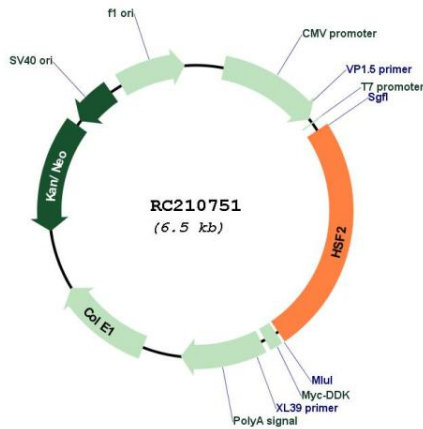
Domains: HSF

Protein Families: Transcription Factors

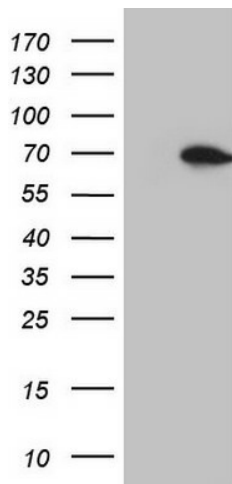
MW: 60.3 kDa

Gene Summary: The protein encoded by this gene belongs to the HSF family of transcription factors that bind specifically to the heat-shock promoter element and activate transcription. Heat shock transcription factors activate heat-shock response genes under conditions of heat or other stresses. Alternatively spliced transcript variants encoding different isoforms have been found for this gene. [provided by RefSeq, Jul 2011]

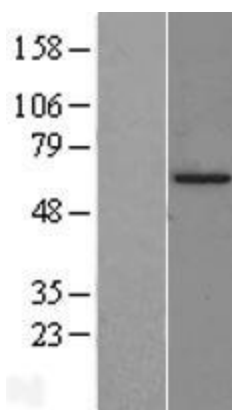
Product images:



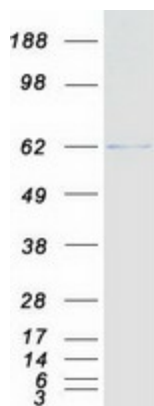
Circular map for RC210751



HEK293T cells were transfected with the pCMV6-ENTRY control (Cat# [PS100001], Left lane) or pCMV6-ENTRY HSF2 (Cat# RC210751, Right lane) cDNA for 48 hrs and lysed. Equivalent amounts of cell lysates (5 ug per lane) were separated by SDS-PAGE and immunoblotted with anti-HSF2 (Cat# [TA807407])(1:2000). Positive lysates [LY401434] (100ug) and [LC401434] (20ug) can be purchased separately from OriGene.



Western blot validation of overexpression lysate (Cat# [LY401434]) using anti-DDK antibody (Cat# [TA50011-100]). Left: Cell lysates from untransfected HEK293T cells; Right: Cell lysates from HEK293T cells transfected with RC210751 using transfection reagent MegaTran 2.0 (Cat# [TT210002]).



Coomassie blue staining of purified HSF2 protein (Cat# [TP310751]). The protein was produced from HEK293T cells transfected with HSF2 cDNA clone (Cat# RC210751) using MegaTran 2.0 (Cat# [TT210002]).