

## Product datasheet for **RC210750**

### galectin 9 (LGALS9) (NM\_002308) Human Tagged ORF Clone

#### Product data:

Product Type:	Expression Plasmids
Product Name:	galectin 9 (LGALS9) (NM_002308) Human Tagged ORF Clone
Tag:	Myc-DDK
Symbol:	galectin 9
Synonyms:	HUAT; LGALS9A
Mammalian Cell Selection:	Neomycin
Vector:	pCMV6-Entry (PS100001)
E. coli Selection:	Kanamycin (25 ug/mL)
ORF Nucleotide Sequence:	>RC210750 ORF sequence Red=Cloning site Blue=ORF Green=Tags(s)

TTTTGTAATACGACTCACTATAGGGCGGCCGGAATTCGTCGACTGGATCCGGTACCGAGGAGATCTGCC  
GCC**CGATCGCC**

ATGGCCTTCAGCGGTTCCAGGCTCCCTACCTGAGTCCAGCTGTCCCTTTTCTGGGACTATTCAAGGAG  
GTCTCCAGGACGGACTTCAGATCACTGTCAATGGGACCGTTCTCAGCTCCAGTGGAAACCAGGTTTGCTGT  
GAACTTTCAGACTGGCTTCAGTGGAAATGACATTGCCTTCCACTTCAACCCTCGGTTTGAAGATGGAGGG  
TACGTGGTGTGCAACACGAGGCAGAACGGAAGCTGGGGGCCGAGGAGAGGAAGACACACATGCCTTCC  
AGAAGGGGATGCCCTTTGACCTCTGCTTCTGGTGCAGAGCTCAGATTTCAAGGTGATGGTGAACGGGAT  
CCTCTTTCGTGCAGTACTCCACCGGTGCCCTTCCACCGTGTGGACACCATCTCCGTCATGGCTCTGTG  
CAGCTGTCTACATCAGCTTCCAGCCTCCCGGCGTGTGGCCTGCCAACCCGGCTCCCATTACCCAGACAG  
TCATCCACACAGTGCAGAGCGCCCTGGACAGATGTTCTACTCCCGCCATCCCACCTATGATGTACCC  
CCACCCCGCCTATCCGATGCCTTTCATCACCACCATCTGGGAGGGCTGTACCCATCCAAGTCCATCCTC  
CTGTCAAGGCACTGTCTGCCAGTGTCTCAGAGGTTCCACATCAACCTGTGCTCTGGGAACCATCGCCT  
TCCACCTGAACCCCGTTTTGATGAGAATGCTGTGGTCCGCAACCCAGATCGACAACCTCTGGGGGTC  
TGAGGAGCGAAGTCTGCCCGAAAAATGCCCTTCGTCCGTGGCCAGAGCTTCTCAGTGTGGATCTTGTGT  
GAAGCTCACTGCCTCAAGGTGGCCGTGGATGGTCAGCACCTGTTTGAATACTACCATCGCCTGAGGAACC  
TGCCACCATCAACAGACTGGAAGTGGGGGCGACATCCAGCTGACCCATGTGCAGACA

**ACGCGT**ACGCGGCCGCTCGAGCAGAAACTCATCTCAGAAGAGGATCTGGCAGCAAATGATATCCTGGATT  
ACAAGGATGACGACGATAAGGTTTAA



[View online »](#)

Protein Sequence: >RC210750 protein sequence  
 Red=Cloning site Green=Tags(s)

MAFSGSQAPYLSPAVPPFSGTIQGGLQDGLQITVNGTVLSSSGTRFAVNFQTGFSGNDIAFHFNPRFEDGG  
 YVVCNTRQNGSWGPEERKTHMPFQKGMPPDLCLVQSSDFKVMVNGILFVQYFHRVPPFHRVDTISVNGSV  
 QLSYISFQPPGVWPANPAPITQTVIHTVQSAPGQMFSTPAIPPMYPHPAYPMPFITITLGGLYPSKSIL  
 LSGTVLPSAQRFHINLCSGNHIAFHNLNPRFDENAVVRNTQIDNSWGSEERSLPRKMPFVRGQSFVWILC  
 EAHCLKVAVDGQHLFEYYHRLRNLPTINRLEVGGDIQLTHVQT

TRTRPLEQKLISEEDLAANDILDYKDDDDKV

Chromatograms: [https://cdn.origene.com/chromatograms/mk6377\\_a10.zip](https://cdn.origene.com/chromatograms/mk6377_a10.zip)

Restriction Sites: SgfI-MluI

Cloning Scheme:



ACCN: NM\_002308

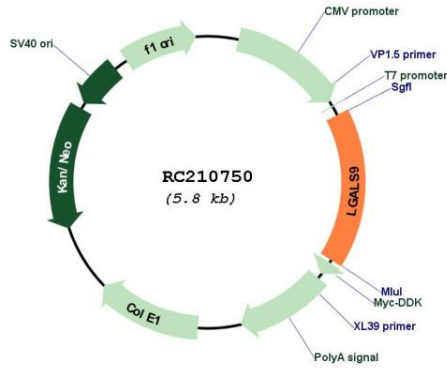
ORF Size: 969 bp

OTI Disclaimer: Due to the inherent nature of this plasmid, standard methods to replicate additional amounts of DNA in E. coli are highly likely to result in mutations and/or rearrangements. Therefore, OriGene does not guarantee the capability to replicate this plasmid DNA. Additional amounts of DNA can be purchased from OriGene with batch-specific, full-sequence verification at a reduced cost. Please contact our customer care team at [custsupport@origene.com](mailto:custsupport@origene.com) or by calling 301.340.3188 option 3 for pricing and delivery.

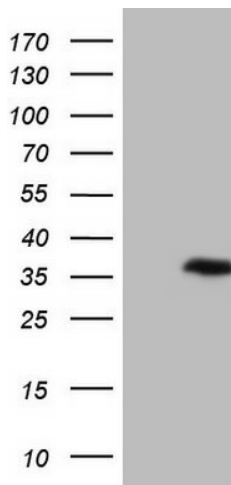
The molecular sequence of this clone aligns with the gene accession number as a point of reference only. However, individual transcript sequences of the same gene can differ through naturally occurring variations (e.g. polymorphisms), each with its own valid existence. This clone is substantially in agreement with the reference, but a complete review of all prevailing variants is recommended prior to use. [More info](#)

<b>OTI Annotation:</b>	This clone was engineered to express the complete ORF with an expression tag. Expression varies depending on the nature of the gene.
<b>Components:</b>	The ORF clone is ion-exchange column purified and shipped in a 2D barcoded Matrix tube containing 10ug of transfection-ready, dried plasmid DNA (reconstitute with 100 ul of water).
<b>Reconstitution Method:</b>	<ol style="list-style-type: none"><li>1. Centrifuge at 5,000xg for 5min.</li><li>2. Carefully open the tube and add 100ul of sterile water to dissolve the DNA.</li><li>3. Close the tube and incubate for 10 minutes at room temperature.</li><li>4. Briefly vortex the tube and then do a quick spin (less than 5000xg) to concentrate the liquid at the bottom.</li><li>5. Store the suspended plasmid at -20°C. The DNA is stable for at least one year from date of shipping when stored at -20°C.</li></ol>
<b>Note:</b>	Plasmids are not sterile. For experiments where strict sterility is required, filtration with 0.22um filter is required.
<b>RefSeq:</b>	<a href="#">NM_002308.4</a>
<b>RefSeq Size:</b>	1739 bp
<b>RefSeq ORF:</b>	972 bp
<b>Locus ID:</b>	3965
<b>UniProt ID:</b>	<a href="#">O00182</a>
<b>Cytogenetics:</b>	17q11.2
<b>Domains:</b>	Gal-bind_lectin
<b>MW:</b>	35.9 kDa
<b>Gene Summary:</b>	The galectins are a family of beta-galactoside-binding proteins implicated in modulating cell-cell and cell-matrix interactions. The protein encoded by this gene is an S-type lectin. It is overexpressed in Hodgkin's disease tissue and might participate in the interaction between the H&RS cells with their surrounding cells and might thus play a role in the pathogenesis of this disease and/or its associated immunodeficiency. Multiple alternatively spliced transcript variants have been found for this gene. [provided by RefSeq, Jul 2008]

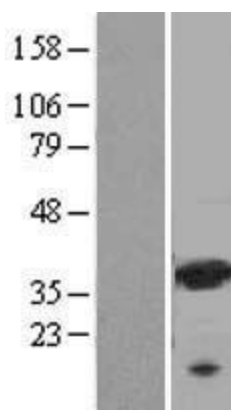
Product images:



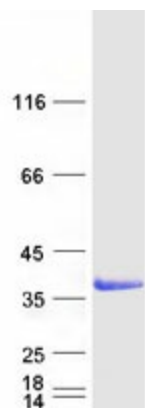
Circular map for RC210750



HEK293T cells were transfected with the pCMV6-ENTRY control (Cat# [PS100001], Left lane) or pCMV6-ENTRY LGALS9 (Cat# RC210750, Right lane) cDNA for 48 hrs and lysed. Equivalent amounts of cell lysates (5 ug per lane) were separated by SDS-PAGE and immunoblotted with anti-LGALS9(Cat# [TA806323]). Positive lysates [LY419406] (100ug) and [LC419406] (20ug) can be purchased separately from OriGene.



Western blot validation of overexpression lysate (Cat# [LY419406]) using anti-DDK antibody (Cat# [TA50011-100]). Left: Cell lysates from untransfected HEK293T cells; Right: Cell lysates from HEK293T cells transfected with RC210750 using transfection reagent MegaTran 2.0 (Cat# [TT210002]).



Coomassie blue staining of purified LGALS9 protein (Cat# [TP310750]). The protein was produced from HEK293T cells transfected with LGALS9 cDNA clone (Cat# RC210750) using MegaTran 2.0 (Cat# [TT210002]).