

Product datasheet for RC210746

TOMM20 (NM_014765) Human Tagged ORF Clone

Product data:

Product Type: Expression Plasmids
Product Name: TOMM20 (NM_014765) Human Tagged ORF Clone
Tag: Myc-DDK
Symbol: TOMM20
Synonyms: MAS20; MOM19; TOM20
Mammalian Cell Selection: Neomycin
Vector: pCMV6-Entry (PS100001)
E. coli Selection: Kanamycin (25 ug/mL)
ORF Nucleotide Sequence: >RC210746 ORF sequence
Red=Cloning site Blue=ORF Green=Tags(s)

TTTTGTAATACGACTCACTATAGGGCGCCGGGAATTCGTCGACTGGATCCGGTACCGAGGAGATCTGCC
GCC**CGATCGCC**

ATGGTGGGTGGAAACAGCGCCATCGCCGCCGGTGTATGCGGGGCCCTTTTCATTGGGTACTGCATCTACT
TCGACCGCAAAGACGAAGTGACCCCAACTTCAAGAACAGGCTTCGAGAACGAAGAAAGAAACAGAAGCT
TGCCAAGGAGAGAGCTGGGCTTCCAAGTTACCTGACCTTAAAGATGCTGAAGCTGTTCCAGAAGTTCTTC
CTTGAAGAAATACAGCTTGGTGAAGAGTTACTAGCTCAAGGTGAATATGAGAAGGGCGTAGACCATCTGA
CAAATGCAATTGCTGTGTGGACAGCCACAGCAGTTACTGCAGGCTTACAGCAAACCTTCCACCACC
AGTGTTCCAGATGCTTCTGACTAAGCTCCAACAATTAGTCAGAGAATTGTAAGTGCTCAGAGCTTGGCT
GAAGATGATGTGGAA

ACGCGTACGCGGCCGCTCGAGCAGAACTCATCTCAGAAGAGGATCTGGCAGCAAATGATATCCTGGATT
ACAAGGATGACGACGATAAGGTTTAA

Protein Sequence: >RC210746 protein sequence
Red=Cloning site Green=Tags(s)
MVGRNSAIAAGVCGALFIGYCIYFDRKRRSDPNFKNRLRERRKKQLAKERAGLSKLPDLKDAEAVQKFF
LEEIQLGEELLAQGEYEKGVVDHLTNAIIVCGQPQQLLQVLQQLPPPVFQMLLTKLPTISQRIVSAQSLA
EDDVE

TRTRPLEQKLISEEDLAANDILDYKDDDDKV

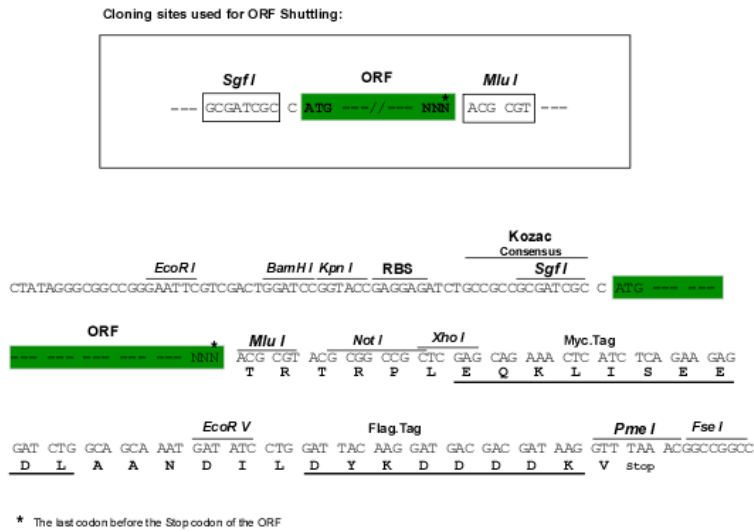
Chromatograms: https://cdn.origene.com/chromatograms/mk6003_b09.zip



[View online »](#)

Restriction Sites: SgfI-MluI

Cloning Scheme:



ACCN: NM_014765

ORF Size: 435 bp

OTI Disclaimer: The molecular sequence of this clone aligns with the gene accession number as a point of reference only. However, individual transcript sequences of the same gene can differ through naturally occurring variations (e.g. polymorphisms), each with its own valid existence. This clone is substantially in agreement with the reference, but a complete review of all prevailing variants is recommended prior to use. [More info](#)

OTI Annotation: This clone was engineered to express the complete ORF with an expression tag. Expression varies depending on the nature of the gene.

Components: The ORF clone is ion-exchange column purified and shipped in a 2D barcoded Matrix tube containing 10ug of transfection-ready, dried plasmid DNA (reconstitute with 100 ul of water).

Reconstitution Method:

1. Centrifuge at 5,000xg for 5min.
2. Carefully open the tube and add 100ul of sterile water to dissolve the DNA.
3. Close the tube and incubate for 10 minutes at room temperature.
4. Briefly vortex the tube and then do a quick spin (less than 5000xg) to concentrate the liquid at the bottom.
5. Store the suspended plasmid at -20°C. The DNA is stable for at least one year from date of shipping when stored at -20°C.

RefSeq: [NM_014765.3](#)

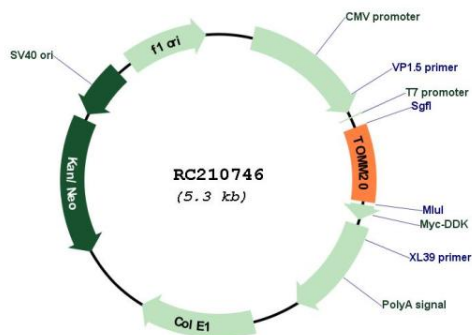
RefSeq Size: 3407 bp

RefSeq ORF: 438 bp

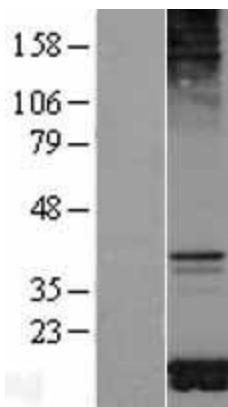
Locus ID: 9804

UniProt ID: [Q15388](#)
Cytogenetics: 1q42.3
Domains: MAS20
Protein Families: Druggable Genome, Transmembrane
MW: 16.3 kDa
Gene Summary: Central component of the receptor complex responsible for the recognition and translocation of cytosolically synthesized mitochondrial preproteins. Together with TOM22 functions as the transit peptide receptor at the surface of the mitochondrion outer membrane and facilitates the movement of preproteins into the TOM40 translocation pore (By similarity). Required for the translocation across the mitochondrial outer membrane of cytochrome P450 monooxygenases.[UniProtKB/Swiss-Prot Function]

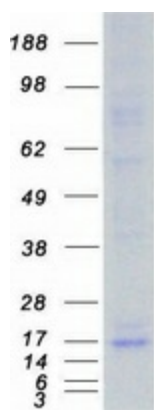
Product images:



Circular map for RC210746



Western blot validation of overexpression lysate (Cat# [LY402378]) using anti-DDK antibody (Cat# [TA50011-100]). Left: Cell lysates from untransfected HEK293T cells; Right: Cell lysates from HEK293T cells transfected with RC210746 using transfection reagent MegaTran 2.0 (Cat# [TT210002]).



Coomassie blue staining of purified TOMM20 protein (Cat# [TP310746]). The protein was produced from HEK293T cells transfected with TOMM20 cDNA clone (Cat# RC210746) using MegaTran 2.0 (Cat# [TT210002]).