

Product datasheet for **RC210745**

SPCS2 (NM_014752) Human Tagged ORF Clone

Product data:

Product Type: Expression Plasmids
Product Name: SPCS2 (NM_014752) Human Tagged ORF Clone
Tag: Myc-DDK
Symbol: SPCS2
Vector: pCMV6-Entry (PS100001)
E. coli Selection: Kanamycin (25 ug/mL)
Cell Selection: Neomycin
ORF Nucleotide Sequence: >RC210745 ORF sequence
Red=Cloning site Blue=ORF Green=Tags(s)

TTTTGTAATACGACTCACTATAGGGCGGCCGGAATTCGTCGACTGGATCCGGTACCGAGGAGATCTGCC
GCC**CGATCGCC**

ATGGCGGGCGCAGCTGTACAGGGCGGGAGAAGCGGTGGTAGCGGAGGCTGTAGTGGGGCTGGTGGTCTT
CCAACCTGCGGGACAGGAAGTGGCCGTAGCGGCTTGTGGATAAGTGAAGATAGATGATAAGCCTGTAAA
AATTGACAAGTGGGATGGATCAGCTGTGAAAACTCTTTGGATGATCTGCCAAAAAGTACTTCTGGAA
AAATACAAATATGTGGAGAATTTTGGTCTAATTGATGGTGCCTCACCATCTGTACAATCTCCTGTTTCT
TTGCCATAGTGGCTTTGATTTGGGATTATATGCACCCCTTTCCAGAGTCCAAACCGTTTTGGCTTTGTG
TGTATATCCTATTTTGTGATGATGGGATTCTGACCATTTATACCTCATATAAGGAGAAGAGCATCTTT
CTCGTGGCCACAGGAAAGATCCTACAGGAATGGATCCTGATGATATTTGGCAGCTGTCTCCAGTCTTA
AAAGTTTTGATGACAAATACACCTTGAAGCTGACCTTCATCAGTGGGAGAACAAAGCAGCAGCGGGAAGC
CGAGTTCACAAAGTCCATTGCTAAGTTTTTTGACCACAGTGGGACTGGTCATGGATGCATATGAGCCT
GAAATATCCAGGCTCCATGACAGTCTTGCCATAGAAAGAAAAATAAG

ACGCGTACGCGGCCGCTCGAGCAGAAACTCATCTCAGAAGAGGATCTGGCAGCAAATGATATCCTGGATT
ACAAGGATGACGACGATAAGGTTTAA

Protein Sequence: >RC210745 protein sequence
Red=Cloning site Green=Tags(s)

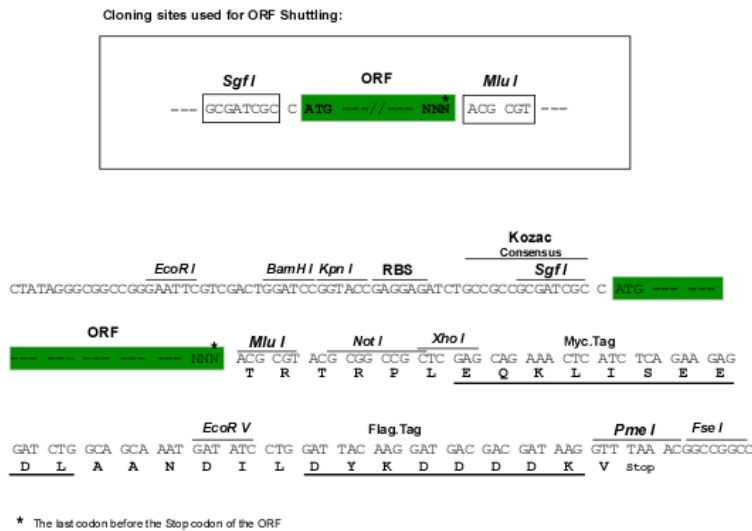
MAAAVQGGRRSGGSGGCSGAGGASNCGTGSGRGLLDKWKIDDKPVKIDKWDGSAVKNLDDSAKKVLE
KYKYVENFGLIDGRLTICTISCFFAIVALIWDYMHFPESKPVLALCVISYFVMMGILTIYTSYKEKSIF
LVAHRKDPTGMPDDIWQLSSSLKRFDDKYTLKLTFSGRTKQQREAFTKSIKFFDHSGLTVMDAYEP
EISRLHDSLAIERKIK

TRTRPLEQKLISEEDLAANDILDYKDDDDKV

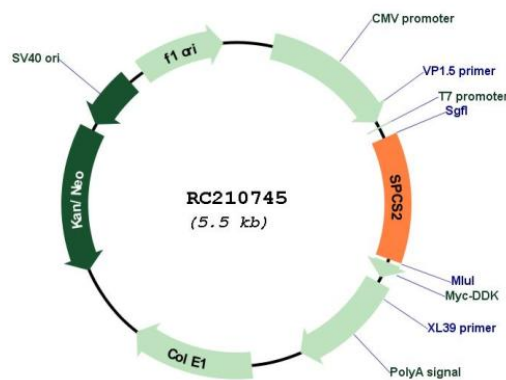


[View online »](#)

Chromatograms: https://cdn.origene.com/chromatograms/mk6769_d04.zip
 Restriction Sites: SgfI-MluI
 Cloning Scheme:



Plasmid Map:



ACCN: NM_014752
 ORF Size: 678 bp
 OTI Disclaimer: The molecular sequence of this clone aligns with the gene accession number as a point of reference only. However, individual transcript sequences of the same gene can differ through naturally occurring variations (e.g. polymorphisms), each with its own valid existence. This clone is substantially in agreement with the reference, but a complete review of all prevailing variants is recommended prior to use. [More info](#)
 OTI Annotation: This clone was engineered to express the complete ORF with an expression tag. Expression varies depending on the nature of the gene.

Components: The ORF clone is ion-exchange column purified and shipped in a 2D barcoded Matrix tube containing 10ug of transfection-ready, dried plasmid DNA (reconstitute with 100 ul of water).

Reconstitution Method:

1. Centrifuge at 5,000xg for 5min.
2. Carefully open the tube and add 100ul of sterile water to dissolve the DNA.
3. Close the tube and incubate for 10 minutes at room temperature.
4. Briefly vortex the tube and then do a quick spin (less than 5000xg) to concentrate the liquid at the bottom.
5. Store the suspended plasmid at -20°C. The DNA is stable for at least one year from date of shipping when stored at -20°C.

RefSeq: [NM_014752.3](#)

RefSeq Size: 2731 bp

RefSeq ORF: 681 bp

Locus ID: 9789

UniProt ID: [Q15005](#)

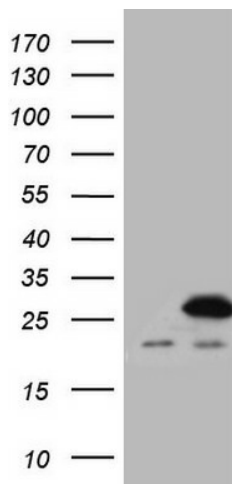
Cytogenetics: 11q13.4

Protein Families: Protease, Transmembrane

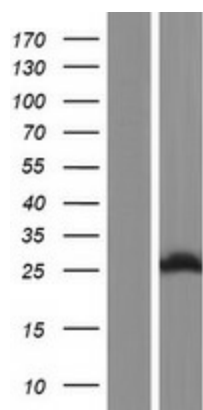
MW: 25 kDa

Gene Summary: Component of the microsomal signal peptidase complex which removes signal peptides from nascent proteins as they are translocated into the lumen of the endoplasmic reticulum. [UniProtKB/Swiss-Prot Function]

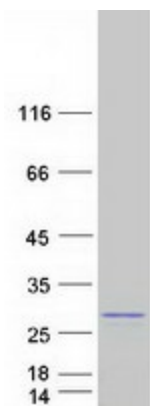
Product images:



HEK293T cells were transfected with the pCMV6-ENTRY control (Cat# [PS100001], Left lane) or pCMV6-ENTRY SPCS2 (Cat# RC210745, Right lane) cDNA for 48 hrs and lysed. Equivalent amounts of cell lysates (5 ug per lane) were separated by SDS-PAGE and immunoblotted with anti-SPCS2 (Cat# [TA808541])(1:2000). Positive lysates [LY415050] (100ug) and [LC415050] (20ug) can be purchased separately from OriGene.



Western blot validation of overexpression lysate (Cat# [LY415050]) using anti-DDK antibody (Cat# [TA50011-100]). Left: Cell lysates from untransfected HEK293T cells; Right: Cell lysates from HEK293T cells transfected with RC210745 using transfection reagent MegaTran 2.0 (Cat# [TT210002]).



Coomassie blue staining of purified SPCS2 protein (Cat# [TP310745]). The protein was produced from HEK293T cells transfected with SPCS2 cDNA clone (Cat# RC210745) using MegaTran 2.0 (Cat# [TT210002]).