

Product datasheet for RC210729

SERP1 (NM_014445) Human Tagged ORF Clone

Product data:

Product Type: Expression Plasmids
 Product Name: SERP1 (NM_014445) Human Tagged ORF Clone
 Tag: Myc-DDK
 Symbol: SERP1
 Synonyms: RAMP4
 Mammalian Cell Selection: Neomycin
 Vector: pCMV6-Entry (PS100001)
 E. coli Selection: Kanamycin (25 ug/mL)
 ORF Nucleotide Sequence: >RC210729 ORF sequence
 Red=Cloning site Blue=ORF Green=Tags(s)

TTTTGTAATACGACTCACTATAGGGCGGCCGGAATTCGTCGACTGGATCCGGTACCGAGGAGATCTGCC
 GCCCGATCGCC

ATGGTCGCCAAGCAAAGGATCCGTATGGCCAACGAGAAGCACAGCAAGAACATCACCCAGCGCGGCAACG
 TCGCCAAGACCTCGAGAAATGCCCCGAAGAGAAGGCGTCTGTAGGACCCTGGTTATTGGCTCTTTCAT
 TTTTGTGTCTGTGGTTCTGCAATTTCCAGATTATCAAGATATCAGGATGGGCATG

ACGCGTACGCGGCCGCTCGAGCAGAACTCATCTCAGAAGAGGATCTGGCAGCAAATGATATCCTGGATT
 ACAAGGATGACGACGATAAGGTTTAA

Protein Sequence: >RC210729 protein sequence
 Red=Cloning site Green=Tags(s)

MVAKQRIRMANEKHSKNITQRGNVAKTSRNASPEEKASVGPWLLALFIFVCGSAIFQIIQSIRMG

TRTRPLEQKLISEEDLAANDILDYKDDDDKV

Chromatograms: https://cdn.origene.com/chromatograms/mk6586_h09.zip

Restriction Sites: Sgfl-MluI



[View online »](#)

Cloning Scheme:



ACCN: NM_014445

ORF Size: 198 bp

OTI Disclaimer: The molecular sequence of this clone aligns with the gene accession number as a point of reference only. However, individual transcript sequences of the same gene can differ through naturally occurring variations (e.g. polymorphisms), each with its own valid existence. This clone is substantially in agreement with the reference, but a complete review of all prevailing variants is recommended prior to use. [More info](#)

OTI Annotation: This clone was engineered to express the complete ORF with an expression tag. Expression varies depending on the nature of the gene.

Components: The ORF clone is ion-exchange column purified and shipped in a 2D barcoded Matrix tube containing 10ug of transfection-ready, dried plasmid DNA (reconstitute with 100 ul of water).

Reconstitution Method:

1. Centrifuge at 5,000xg for 5min.
2. Carefully open the tube and add 100ul of sterile water to dissolve the DNA.
3. Close the tube and incubate for 10 minutes at room temperature.
4. Briefly vortex the tube and then do a quick spin (less than 5000xg) to concentrate the liquid at the bottom.
5. Store the suspended plasmid at -20°C. The DNA is stable for at least one year from date of shipping when stored at -20°C.

RefSeq: [NM_014445.4](#)

RefSeq Size: 3181 bp

RefSeq ORF: 201 bp

Locus ID: 27230

UniProt ID: [Q9Y6X1](#)

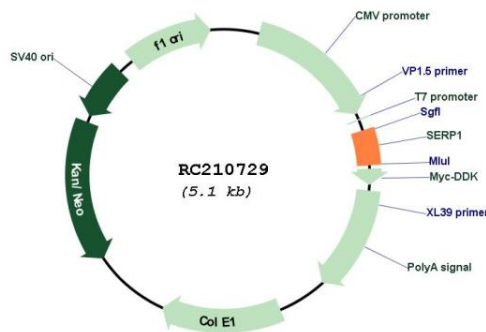
Cytogenetics: 3q25.1

Protein Families: Transmembrane

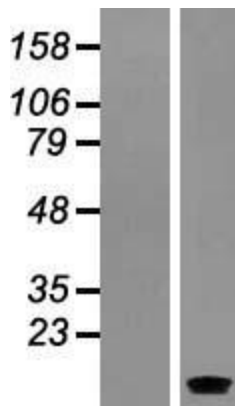
MW: 7.4 kDa

Gene Summary: Interacts with target proteins during their translocation into the lumen of the endoplasmic reticulum. Protects unfolded target proteins against degradation during ER stress. May facilitate glycosylation of target proteins after termination of ER stress. May modulate the use of N-glycosylation sites on target proteins (By similarity).[UniProtKB/Swiss-Prot Function]

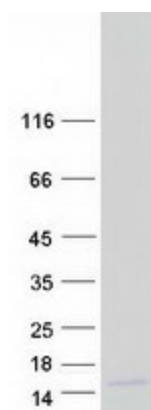
Product images:



Circular map for RC210729



Western blot validation of overexpression lysate (Cat# [LY415270]) using anti-DDK antibody (Cat# [TA50011-100]). Left: Cell lysates from untransfected HEK293T cells; Right: Cell lysates from HEK293T cells transfected with RC210729 using transfection reagent MegaTran 2.0 (Cat# [TT210002]).



Coomassie blue staining of purified SERP1 protein (Cat# [TP310729]). The protein was produced from HEK293T cells transfected with SERP1 cDNA clone (Cat# RC210729) using MegaTran 2.0 (Cat# [TT210002]).