

## Product datasheet for **RC210725**

### MAP7D1 (NM\_018067) Human Tagged ORF Clone

#### Product data:

Product Type:	Expression Plasmids
Product Name:	MAP7D1 (NM_018067) Human Tagged ORF Clone
Tag:	Myc-DDK
Symbol:	MAP7D1
Synonyms:	PARCC1; RPRC1
Mammalian Cell Selection:	Neomycin
Vector:	pCMV6-Entry (PS100001)
E. coli Selection:	Kanamycin (25 ug/mL)



[View online »](#)

**ORF Nucleotide Sequence:**

>RC210725 representing NM\_018067  
 Red=Cloning site Blue=ORF Green=Tags(s)

TTTTGTAATACGACTCACTATAGGGCGGCCGGGAATTCGTCGACTGGATCCGGTACCGAGGAGATCTGCC  
 GCC**CGCATCGCC**

ATGGAGAGCGGCCCGCTGCGGAGCTGGGGCGGGCGCACCCCCAGCTGTGGTCGCCAGGACCCCCCAG  
 AGCCAAGACCTTCTCCAGAAGGTGACCCTTCCCCCACCACCACCAATGTCAGCCCTGGTCCCCGACAC  
 TCCCCCGACACCCCTCCTGCCATGAAGAATGCCACTAGCTCTAAGCAGCTCCCCTGGAACAGAGAGC  
 CCCTCAGGGCAGGTGGGCTTAGGCCAGCCCCCGCAGGAAGAGTCCCCTTCTCTGAAGCAAAGAGCA  
 GAGGACCCACCCACCAGCCATGGGCCACGGGATGCCAGACCTCCTCGAAGGAGCAGCCAGCCATCTCC  
 AACAGCAGTGCCAGCCTCCGACAGCCCTCCACCAAGCAAGAGGTGAAGAAGGCAGGAGAGAGACACAAG  
 CTGGCAAAGGAGCGGCGAGAAGAGCGGGCAAGTACCTGGCGGCAAGAAGGCAGTGTGGCTGGAGAAGG  
 AGGAGAAGGCCAAGGCGCTGCGGGAGAAGCAGCTCCAGGAGCGCCGGCGCCGGCTGGAGGAGCAACGTCT  
 TAAAGCCGAGCAACGCCGTGCAGCCCTGGAGGAACGGCAGCGGCAAGCTCGAGAAAAACAGGAGCGC  
 TATGAAGCAGCCATCCAACGGTCACTGAAGAAGACGTGGGCCGAAATCCGGCAGCAGCGCTGGTCCCTGGG  
 CAGGGGCCCTGCACCACAGCTCTCCAGGACATAAGACCAGTGGGAGCAGGTGCTCCGTGTGCGCAGTTAA  
 CCTGCCAAAACAGTGGACTCTATAATCAACAAGCGGCTCTCAAAGTCTCTGCCACGCTCTGAACTCC  
 CCCAGTAGAAATCGCAGCCTGCAGCTGAGCGCATGGGAGAGCAGCATCGTGGATCGTCTGATGACGCCCA  
 CTCTCTCCTTCTTGGCTCGGAGTGCAGCGCGGTCACTGCCCCGCAACGGCCGGGACCAGGGTAGGGG  
 CTGCGACCCTGGGAGAGGCCACGTGGGGCGGGCAGGGCCAGCCTGGCGCGGGGCCAACCAGCAG  
 CGCACTCATCCCTCTGCAGCCGTGCCGGTGTGCCCGGCTCGGCTCCGCCAGCCCCCTGACGCCGTGCA  
 GCGTCACCCGAAGCGTGCACCCGTGCCCGCCCGCGGAGGCGCTCGCCGTTGAGCAAAAAGGAGAAGAAGGACAAG  
 GAGCGGGAAAACGAGAAGGAGAAGAGTGCCTAGCCCGGAGCGCAGCCTCAAGAAGCGCCAGTCTGCTGC  
 CCGCTCCCCACGTGCCGCTCTCCGCCAGCACCCTCTGAGCTCAGCCCCAAATCCAAGGCCAGGCC  
 ATCCTCTCCCTCCACATCCTGGCACAGGCTGCCTCCCCCTGCCAGCCAGGGCCAGGCCACACTCTG  
 CCTCAAAGCCACCGTCCCCCGAGGCACACTGCATCCCCAAGGGGCGGGTTCGGAGGAAGGAGGAGG  
 CAAAGGAGAGCCCCAGCGCCGAGGGCCCGAGGACAAGAGCCAGAGCAAGCGCAGGGCCAGTAAAGAGAA  
 GGAGTCAGCAGCCCCAGCCTCACCGCACCTTCGCCGGCGCCCTCGCCACCCAGCCCCCGCCAGAA  
 GAGCAGCCCCCGGGAGACCCCTACAGACGCTGCTGTCTTGACCTCACCCAGCCCTGCTCCCCCGG  
 TGACCCCTAGCAAACCAATGGCCGGCACACAGACCGAGAAGAAGCCACTCGGCTCTTGCTGAGAAGCG  
 GCGCCAGGCCCGGAGCAGCGGGAGCGGAGGAGCAGGAGCGGAGGCTGCAGGCAGAAAGGGACAAGCGA  
 ATGCGAGAGGAGCAGCTGGCACGGGAGGCGGAGGCCCGGGCGGAGCGGGAGGCGGAGGCCCGGAGGCGGG  
 AGGAGCAGGAGGCAGAGAGAAGGCGCAGGCCGAGCAGGAGGAGCAGGAGCGGCTGCAGAAGCAGAAAGA  
 GGAGGCCGAAGCTCGGTGCGGGAAAGAGGCGGAGCGGCAGCGTCTGGAGCGGAAAAGCACTTCCAGCAG  
 CAGGAGCAAGAGCGGCAAGAGCGCAGAAAGCGTCTGGAGGAGATCATGAAGAGGACTCGGAAGTCAGAAG  
 TTTCTGAAACCAAGCAGAAGCAGGACAGCAAGGAGGCCAACGCCAACGGTTCAGCCAGAGCCTGTGAA  
 AGCTGTGGAGGCTCGGTCCCCAGGGCTGCAGAAGGAGGCTGTGCAGAAAGAGGAGCCATCCCACAGGAG  
 CCTCAGTGGAGTCTCCAAGCAAGGAGTTGCCAGCGTCCCTGGTGAATGGCTGCAGCCTCTCCAGCAC  
 ACCAGGAGAATGGCTTCTCCACCAACGGACCCTCTGGGGACAAGAGTCTGAGCCGAACACAGAGACT  
 CCTGCCCTTTCAGAGGCAGAAGCCTTCTCAAGAAAGCTGTGGTGCAGTCCCCGCGAGTACAGAAGTC  
 CTT

**ACGCGT**ACGCGGCCGCTCGAGCAGAAACTCATCTCAGAAGAGGATCTGGCAGCAATGATATCCTGGATT  
 ACAAGGATGACGACGATAAGGTTTAA

**Protein Sequence:** >RC210725 representing NM\_018067  
 Red=Cloning site Green=Tags(s)

MESGPRAELGAGAPPAVVARTPPEPRPSPEGDPSPPPPPMSALVPDTPDTPPAMKNATSSKQLPLEPES  
 PSGVQGRPPAPPQEEPSSEAKSRGTPPAMGPRDARPPRRSSQPSPTAVPASDSPPTKQEVKKAGERHK  
 LAKERREERAKYLAACKAVWLEKEEKAKALREKQLQERRRRLEEQRKAEQRRAALEERQRQKLEKNKER  
 YEAAIQRSVKKTWAEIRQQRWSWAGALHHSSPGHKTSGRCSVSAVNLPKHVDSIINKRLSKSSATLWNS  
 PSRNRSLLQLSAWESSIVDRLMTPTLSFLARSRAVTLPRNGRDQGRGCDPGRGPTWGRAGASLARGFPD  
 RTHPSAAVPVPCRSASASPLTPCSVTRSVHRCAPAGERGERRKNAGGSPAPVRRRPEASPVQKKEKDK  
 ERENEKEKSALARERSLKKRQSLPASPRARLSASTASELSPKSKARPSSPSTSWHRPASPCSPGPGHTL  
 PPKPPSPRGTTASPKGRVRRKEEAKESPAAGPEDKSQSKRRASNEKESAAPASPAPSPAPSPTAPPQK  
 EQPPAETPTDAAVLTSPAPAPPVTPSKPMAGTTDREEATRLLAEKRRQAREQREEREQERRLQAERDKR  
 MREEQLAREAEARAEREAEARRREEQAREKAQAEQEEQERLQKQKEAEARSREEAERQLEREKHFQQ  
 QEERQERRKRLIEIMKRTRKSEVSETKQKQDSKEANANGSSPEPVKAVEARSPGLQKEAVQKEEPIPQE  
 PQWLSPSKELPASLVNGLQPLPAHQENGFSTNGPSGDKSLSRTPETLLPFAEAEAFLLKAVVQSPQVTE  
 L

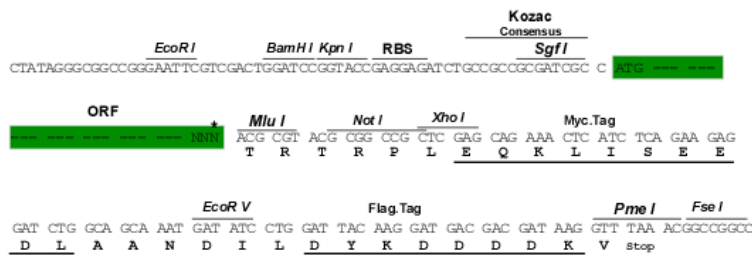
TRTRPLEQKLISEEDLAANDILDYKDDDDKV

**Chromatograms:** [https://cdn.origene.com/chromatograms/mk8114\\_f01.zip](https://cdn.origene.com/chromatograms/mk8114_f01.zip)

**Restriction Sites:** SgfI-MluI

**Cloning Scheme:**

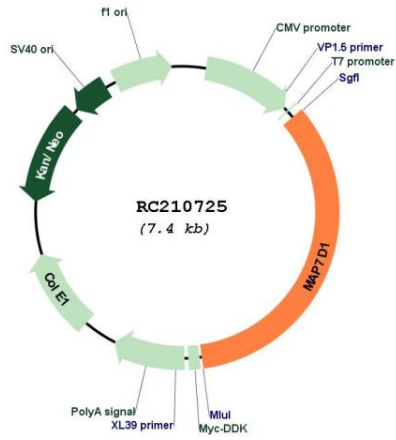
Cloning sites used for ORF Shuttling:



\* The last codon before the Stop codon of the ORF

ACCN:	NM_018067
ORF Size:	2523 bp
OTI Disclaimer:	The molecular sequence of this clone aligns with the gene accession number as a point of reference only. However, individual transcript sequences of the same gene can differ through naturally occurring variations (e.g. polymorphisms), each with its own valid existence. This clone is substantially in agreement with the reference, but a complete review of all prevailing variants is recommended prior to use. <a href="#">More info</a>
OTI Annotation:	This clone was engineered to express the complete ORF with an expression tag. Expression varies depending on the nature of the gene.
Components:	The ORF clone is ion-exchange column purified and shipped in a 2D barcoded Matrix tube containing 10ug of transfection-ready, dried plasmid DNA (reconstitute with 100 ul of water).
Reconstitution Method:	<ol style="list-style-type: none"><li>1. Centrifuge at 5,000xg for 5min.</li><li>2. Carefully open the tube and add 100ul of sterile water to dissolve the DNA.</li><li>3. Close the tube and incubate for 10 minutes at room temperature.</li><li>4. Briefly vortex the tube and then do a quick spin (less than 5000xg) to concentrate the liquid at the bottom.</li><li>5. Store the suspended plasmid at -20°C. The DNA is stable for at least one year from date of shipping when stored at -20°C.</li></ol>
RefSeq:	<a href="#">NM_018067.3</a> , <a href="#">NP_060537.3</a>
RefSeq Size:	3357 bp
RefSeq ORF:	2526 bp
Locus ID:	55700
UniProt ID:	<a href="#">Q3KQU3</a>
Cytogenetics:	1p34.3
MW:	92.6 kDa

Product images:



Circular map for RC210725