

## Product datasheet for **RC210724**

### **RFTN2 (NM\_144629) Human Tagged ORF Clone**

#### **Product data:**

Product Type:	Expression Plasmids
Product Name:	RFTN2 (NM_144629) Human Tagged ORF Clone
Tag:	Myc-DDK
Symbol:	RFTN2
Synonyms:	C2orf11; Raftlin-2
Mammalian Cell Selection:	Neomycin
Vector:	pCMV6-Entry (PS100001)
E. coli Selection:	Kanamycin (25 ug/mL)



[View online »](#)

**ORF Nucleotide Sequence:**

>RC210724 ORF sequence  
 Red=Cloning site Blue=ORF Green=Tags(s)

TTTTGTAATACGACTCACTATAGGGCGGCCGGGAATTCGTCGACTGGATCCGGTACCGAGGAGATCTGCC  
 GCC**GCGATCGCC**

ATGGGGTGGCAGCTTAGAAAAGCTAGAAGACCCTGATGATAGCAGCCCTGGAAAAATATTTTCTACCTGA  
 AGAGACCCGAAGTGGAAACAAAGACAGAATTTGCTTACGAATATGTATTGCTGGATTTACTCTACAAGC  
 TTCATCAAACCCAGAAGTCATCAAGATAAATTCATTCTGGATATAGTAACAAAAGTGGAAAACCTATTAT  
 CTTAAAGGATATATTGTCGGGGCTATTCATCCTGTTATACAACCTGTGGGGCAGCGAAAACCTACCTG  
 CAAGTTACCTATACAGAGTGGTCTATTGCGCTTGAATTAAGCCCAAAGAATTCGGCAGCACCCAGTGG  
 ACAAAGACGCCCAAGGCTTGTGATTGAGGAATGTCCCCTAATTCTGAGGCACAAACAAATGACGCAGCA  
 AAAGAAGTATAGAAAAGATTAATGTCGCTGCTAAAAGAGGAATGAAATTTGTTGGATTCATATCACAGC  
 ATTATTCTCCATCTAAATCTGCAATGGAACCAACCATGATGGAGATATAGAATCGATGCTACATGTGAG  
 ACACGGTTCAGATGAAAAGTGTAGAAGTTGGAATGAAGGGACGTTAAGTGGGCAGTCATCTGAAAGCGGA  
 ATTGAGGAAGAATTCATCATGAAAGTGGACAGTATCAAATGGAACAAAATGGCAGCCCTACTTCCCTCTA  
 AATCAAGAAAGGGAGAAGCCTCAGATAACAAATTTGTATACAGTCTTCAATGCTTTTGATGATGATCAAC  
 CTCTGGGCTATCAGGAAGGCATCCTGTCAATGAAAGTAAACAAGAAAAGGATCAGTCATTAGTACACTT  
 GATGCTGATTGGCTGGAGTTAACTACCTTTTATTATAACAAGGCTTGTCTTTAATTGATCTTTTGTAT  
 TCTGGGAAACATCAAAGGGGAACATTTGCCTAAATCTTTGGAAGGATTTTTTATCTATGAAGAAGAAGG  
 TTCTGGAGTCCAGGTTCTAGTAGGAAAGGAAATGATGCCATCGTAGTAGAACAATGGACTGTTATTGAG  
 GGATGTGAAATCAAACAGATTATGGCCCTCTGCTGCACACTCTGGCTGAATTCGGATGGCTTCTGACAA  
 GCGTGTGGCCACACCTGTATTGAGACATGACAGTGAAGGGAATTTGGCTACAAAGCAGATCGTATTCT  
 TCAGAGGCCAGTTATGTGGAATTCAGCTGCTCAAACACCAGATAAGAAAAGCCAGCCGCACATAAAAGGT  
 GAAGACAAGAATAAGCCACTAGTAGAAGCATCGGATTAGACACAACCTCGTCACAACCTGCAGAGAGCA  
 GACACCTGCCTGAGGAGTGCCGCCTTTCTCCCTCCCGGAATGCTGGACAAGGAGGGAAGGCTGGCACA  
 GCACAACAGTCTCTGGGTTCCAGCAGCAGTGACAACGCTCCTCCGGAATTAGACGACGGACAGTTTGAT  
 CAGGAAGATGGAGTGACTCAGGTCACCTGTATG

**ACGCGT**ACGCGGCCGCTCGAGCAGAAACTCATCTCAGAAGAGGATCTGGCAGCAAATGATATCTGGATT  
 ACAAGGATGACGACGATAAGGTTTAA

**Protein Sequence:**

>RC210724 protein sequence  
 Red=Cloning site Green=Tags(s)

MGCGLRKLKLEPDDSSPGKIFSTLKRQVETKTEFAYEYVLLDFTLQASSNPEVIKINSILDIVTKVENYY  
 LKGYIVGAIHPVIQPVGQRKHLPASYL YRVVLLRLKLSPKNSAAPSQRRPRLVIEECPLTSEAQTNDAA  
 KELIEKINVAARKGMKFGVVISQHYSPSKFCNGTNHDGDIESMLHVRHGSDENCRSWNEGLSGQSSESG  
 IEEELHHESGQYQMEQNGSPTSSKSRKGEASDNKLYTVFNAFDDSTSWAYQEGILSMKVTRKGSVISTL  
 DADWLELTTFFYKQGLSLIDSFVWETSKGEHLPKSLEGGFFIYEEEGSGVPGSSRKGNDIVVEQWTVIE  
 GCEIKTDYGPLLHHTLAIEFGWLLTSVLPVLRHDSGNLTKQIVFLQRPVMWNSAAQTPDKKASRHIK  
 EDKNKATSRSIGLDTTSSQPAESRHLPEECRLSPSRECWTKEGRLAQHNSFSGFSSSDNVLRELDGQFD  
 QEDGVTQVTCM

**TRTRPLEQKLI**SEEDLAANDILDYKDDDDKV

**Chromatograms:**

[https://cdn.origene.com/chromatograms/mk6585\\_c02.zip](https://cdn.origene.com/chromatograms/mk6585_c02.zip)

**Restriction Sites:**

Sgfl-Mlul

**Cloning Scheme:**


**ACCN:** NM\_144629

**ORF Size:** 1503 bp

**OTI Disclaimer:** The molecular sequence of this clone aligns with the gene accession number as a point of reference only. However, individual transcript sequences of the same gene can differ through naturally occurring variations (e.g. polymorphisms), each with its own valid existence. This clone is substantially in agreement with the reference, but a complete review of all prevailing variants is recommended prior to use. [More info](#)

**OTI Annotation:** This clone was engineered to express the complete ORF with an expression tag. Expression varies depending on the nature of the gene.

**Components:** The ORF clone is ion-exchange column purified and shipped in a 2D barcoded Matrix tube containing 10ug of transfection-ready, dried plasmid DNA (reconstitute with 100 ul of water).

- Reconstitution Method:**
1. Centrifuge at 5,000xg for 5min.
  2. Carefully open the tube and add 100ul of sterile water to dissolve the DNA.
  3. Close the tube and incubate for 10 minutes at room temperature.
  4. Briefly vortex the tube and then do a quick spin (less than 5000xg) to concentrate the liquid at the bottom.
  5. Store the suspended plasmid at -20°C. The DNA is stable for at least one year from date of shipping when stored at -20°C.

**RefSeq:** [NM\\_144629.3](#)

**RefSeq Size:** 3131 bp

**RefSeq ORF:** 1506 bp

**Locus ID:** 130132

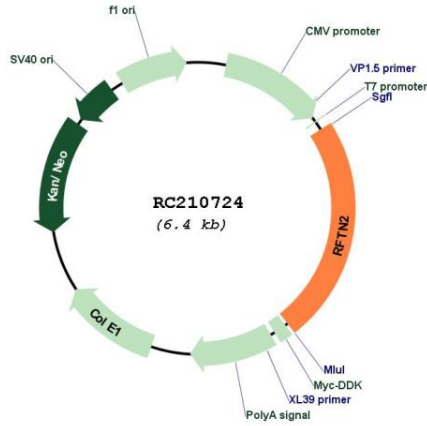
**UniProt ID:** [Q52LD8](#)

**Cytogenetics:** 2q33.1

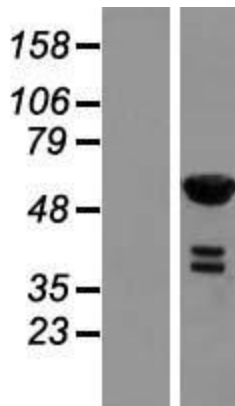
**MW:** 55.9 kDa

**Gene Summary:** Upon bacterial lipopolysaccharide stimulation, mediates clathrin-dependent internalization of TLR4 in dendritic cells, resulting in activation of TICAM1-mediated signaling and subsequent IFNB1 production. May regulate B-cell antigen receptor-mediated signaling.[UniProtKB/Swiss-Prot Function]

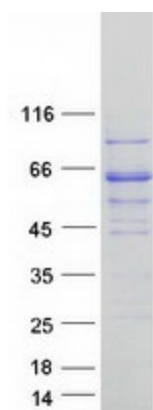
**Product images:**



Circular map for RC210724



Western blot validation of overexpression lysate (Cat# [LY408260]) using anti-DDK antibody (Cat# [TA50011-100]). Left: Cell lysates from untransfected HEK293T cells; Right: Cell lysates from HEK293T cells transfected with RC210724 using transfection reagent MegaTran 2.0 (Cat# [TT210002]).



Coomassie blue staining of purified RFTN2 protein (Cat# [TP310724]). The protein was produced from HEK293T cells transfected with RFTN2 cDNA clone (Cat# RC210724) using MegaTran 2.0 (Cat# [TT210002]).