

Product datasheet for RC210723

RALY (NM_016732) Human Tagged ORF Clone

Product data:

Product Type:	Expression Plasmids
Product Name:	RALY (NM_016732) Human Tagged ORF Clone
Tag:	Myc-DDK
Symbol:	RALY
Synonyms:	HNRPCL2; P542
Mammalian Cell Selection:	Neomycin
Vector:	pCMV6-Entry (PS100001)
E. coli Selection:	Kanamycin (25 ug/mL)
ORF Nucleotide Sequence:	>RC210723 ORF sequence Red=Cloning site Blue=ORF Green=Tags(s)

TTTTGTAATACGACTCACTATAGGGCGCCGGGAATTCGTCGACTGGATCCGGTACCGAGGAGATCTGCC
GCC**CGATCGCC**

ATGTCCTTGAAGCTTCAGGCAAGCAATGTAACCAACAAGAATGACCCCAAGTCCATCAACTCTCGAGTCT
TCATTGGAACCTCAACACAGCTCTGGTGAAGAAATCAGATGTGGAGACCATCTTCTCTAAGTATGGCCG
TGTGGCCGGCTGTTCTGTGCACAAGGGCTATGCCTTTGTTCACTACTCCAATGAGCGCCATGCCCGGCA
GCTGTGCTGGGAGAGAATGGCGGGTGTGGCCGGCAGACCCTGGACATCAACATGGCTGGAGAGCCTA
AGCCTGACAGACCAAGGGGCTAAAGAGAGCAGCATCTGCCATATACAGTGGCTACATCTTTGACTATGA
TTACTACCGGGACGACTTCTACGACAGGCTCTTCGACTACCGGGCCGTCTGTGCGCCGTGCCAGTGCC
AGGGCGGTCCCTGTGAAGCGACCCCGGGTCCAGTCCCTTTGGTCCGGCGTGTCAAACTAACGTACCTG
TCAAGCTCTTTGCCCGCTCCACAGCTGTACCACCAGCTCAGCCAAGATCAAGTTAAAGAGCAGTGAGCT
GCAGGCCATCAAGACGGAGCTGACACAGATCAAGTCCAATATCGATGCCCTGCTGAGCCGCTGGAGCAG
ATCGCTGCGGAGCAAAAGGCAAATCCAGATGGCAAGAAGAAGGGTGTGGAGGTGGCGCCAGCGGGCGG
GCGGCGGTGGTGGTGGCAGCGGTGGCGGTGGCAGTGGTGGTGGCGGTGGCGGTGGCAGCAGCCGGCCACC
AGCCCCCAAGAGAACAACAACTTCTGAGCAGGCTGCCCCAGGGGAAGCACGGACCCGAGACGACGGC
GATGAGGAAGGGCTCTGACACACAGCGAGGAAGAGCTGGAACACAGCCAGGACACAGACGCGGATGATG
GGCCTTGACG

ACGCGTACGCGGCCGCTCGAGCAGAACTCATCTCAGAAGAGGATCTGGCAGCAAATGATATCCTGGATT
ACAAGGATGACGACGATAAGGTTTAA



[View online »](#)

Protein Sequence: >RC210723 protein sequence
 Red=Cloning site Green=Tags(s)

MSLKLQASNVTNKNDPKSINSRVFIGNLNTALVKKSDVETIFSKYGRVAGCSVHKGYAFVQYSNERHARA
 AVLGENGRVLAGQTLDINMAGEPKPDRPKGLKRAASAIYSGYIFDYDYRDDFFYDRLFYDRGRLSPVPVP
 RAVPVKRPRVTVPLVRRVKTNPVKL FARSTAVTTSSAKIKLKSELQAIKTEL TQIKSNIDALLSRLEQ
 IAAEQKANPDGKKKGDGGGASGGGGGGGGSGGGGGGGSSRPPAPQENTTSEAGLPQGEARTRDDG
 DEEGLLTHSEEELEHSQDTDADDGALQ

TRTRPLEQKLISEEDLAANDILDYKDDDDKV

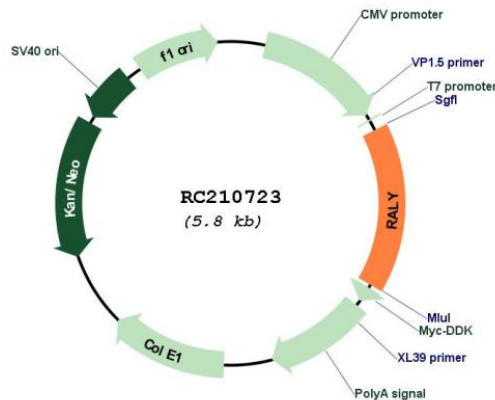
Chromatograms: https://cdn.origene.com/chromatograms/mk6367_d07.zip

Restriction Sites: SgfI-MluI

Cloning Scheme:



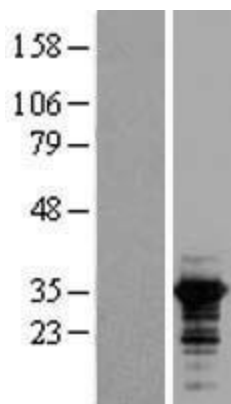
Plasmid Map:



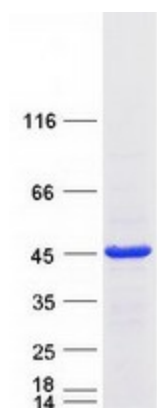
ACCN: NM_016732

ORF Size:	921 bp
OTI Disclaimer:	The molecular sequence of this clone aligns with the gene accession number as a point of reference only. However, individual transcript sequences of the same gene can differ through naturally occurring variations (e.g. polymorphisms), each with its own valid existence. This clone is substantially in agreement with the reference, but a complete review of all prevailing variants is recommended prior to use. More info
OTI Annotation:	This clone was engineered to express the complete ORF with an expression tag. Expression varies depending on the nature of the gene.
Components:	The ORF clone is ion-exchange column purified and shipped in a 2D barcoded Matrix tube containing 10ug of transfection-ready, dried plasmid DNA (reconstitute with 100 ul of water).
Reconstitution Method:	<ol style="list-style-type: none">1. Centrifuge at 5,000xg for 5min.2. Carefully open the tube and add 100ul of sterile water to dissolve the DNA.3. Close the tube and incubate for 10 minutes at room temperature.4. Briefly vortex the tube and then do a quick spin (less than 5000xg) to concentrate the liquid at the bottom.5. Store the suspended plasmid at -20°C. The DNA is stable for at least one year from date of shipping when stored at -20°C.
RefSeq:	NM_016732.3
RefSeq Size:	4790 bp
RefSeq ORF:	921 bp
Locus ID:	22913
UniProt ID:	Q9UKM9
Cytogenetics:	20q11.22
Domains:	RRM
MW:	32.6 kDa
Gene Summary:	This gene encodes a member of the heterogeneous nuclear ribonucleoprotein (hnRNP) gene family. This protein may play a role in pre-mRNA splicing and in embryonic development. Alternate splicing results in multiple transcript variants. [provided by RefSeq, Sep 2011]

Product images:



Western blot validation of overexpression lysate (Cat# [LY413828]) using anti-DDK antibody (Cat# [TA50011-100]). Left: Cell lysates from untransfected HEK293T cells; Right: Cell lysates from HEK293T cells transfected with RC210723 using transfection reagent MegaTran 2.0 (Cat# [TT210002]).



Coomassie blue staining of purified RALY protein (Cat# [TP310723]). The protein was produced from HEK293T cells transfected with RALY cDNA clone (Cat# RC210723) using MegaTran 2.0 (Cat# [TT210002]).